

## Specifications

±36.17 AC (±9 AC Usable)  
TOTAL ACREAGE

IOS Lot with Maintenance Facility  
BUILD TO SUIT

Block 230, Lot 18.01 - ±12.49 AC  
Block 230, Lot 18.02 - ±23.68 AC  
BLOCK & LOTS

±4.5 AC - Pad A

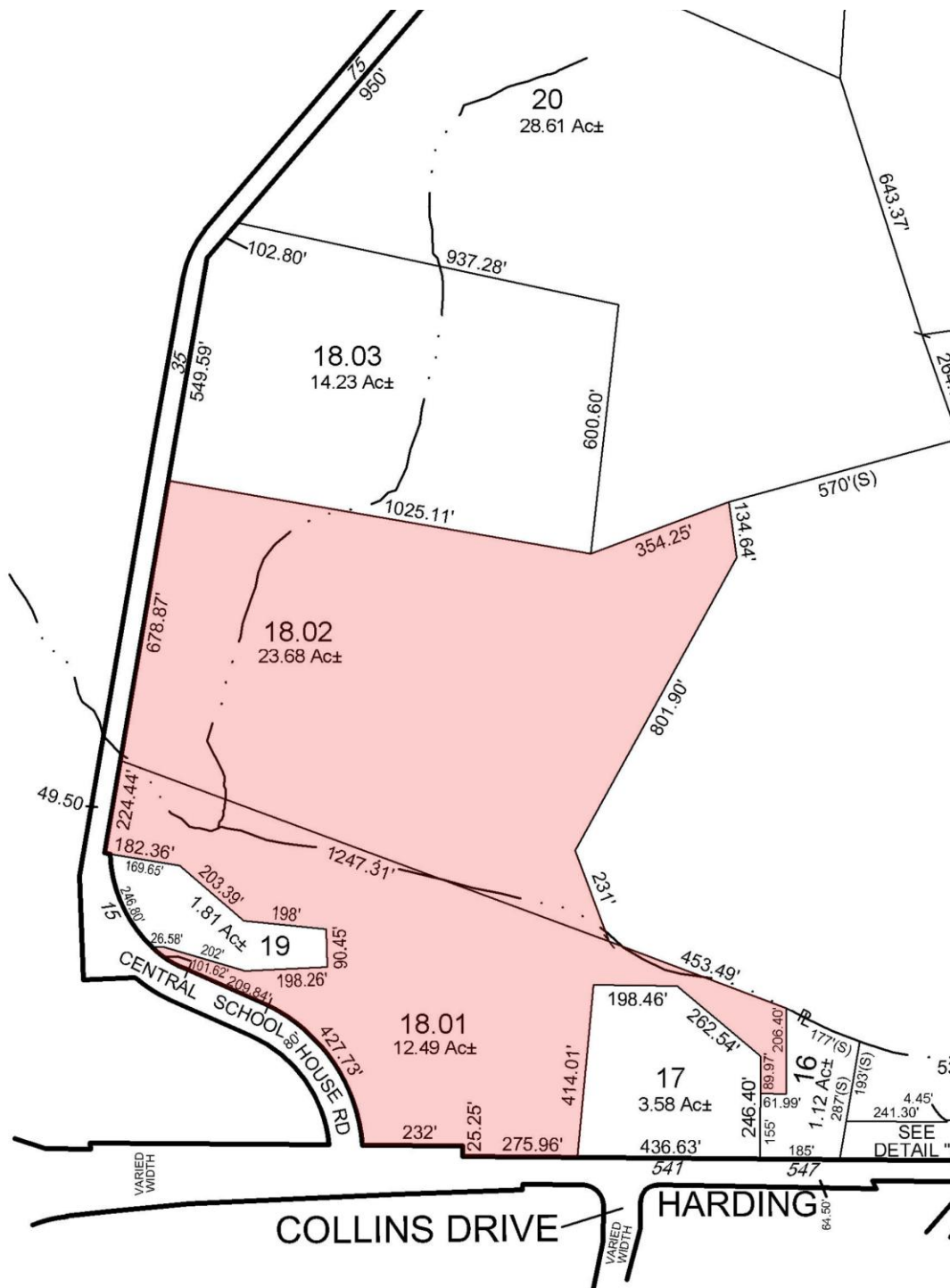
±5 AC - Pad B

Paved, Fenced and Lit  
HIGHLIGHTS

Located at I-295  
5.7 Miles to I-95 Exit 2  
10.2 Miles to Port of Wilmington  
31.6 Miles to Philadelphia  
ACCESSIBILITY

For additional property information or to arrange an inspection, please contact the exclusive brokers:

Jason M. Crimmins, CCIM, SIOR, *President*, 973.379.6644 x 122, [jmcrimmins@blauberg.com](mailto:jmcrimmins@blauberg.com)  
Alessandro (Alex) Conte, CCIM, SIOR, *Executive Vice President*, 973.379.6644 x 131, [aconte@blauberg.com](mailto:aconte@blauberg.com)  
Peter J. Murano, Jr., *Managing Executive Director*, 973.379.6644 x 114, [pjmurano@blauberg.com](mailto:pjmurano@blauberg.com)  
John Longo, *Senior Director*, 973.379.6644 x 129, [jlongo@blauberg.com](mailto:jlongo@blauberg.com)  
Patrick Clancy, *Associate*, 973.379.6644 x 238, [pclancy@blauberg.com](mailto:pclancy@blauberg.com)



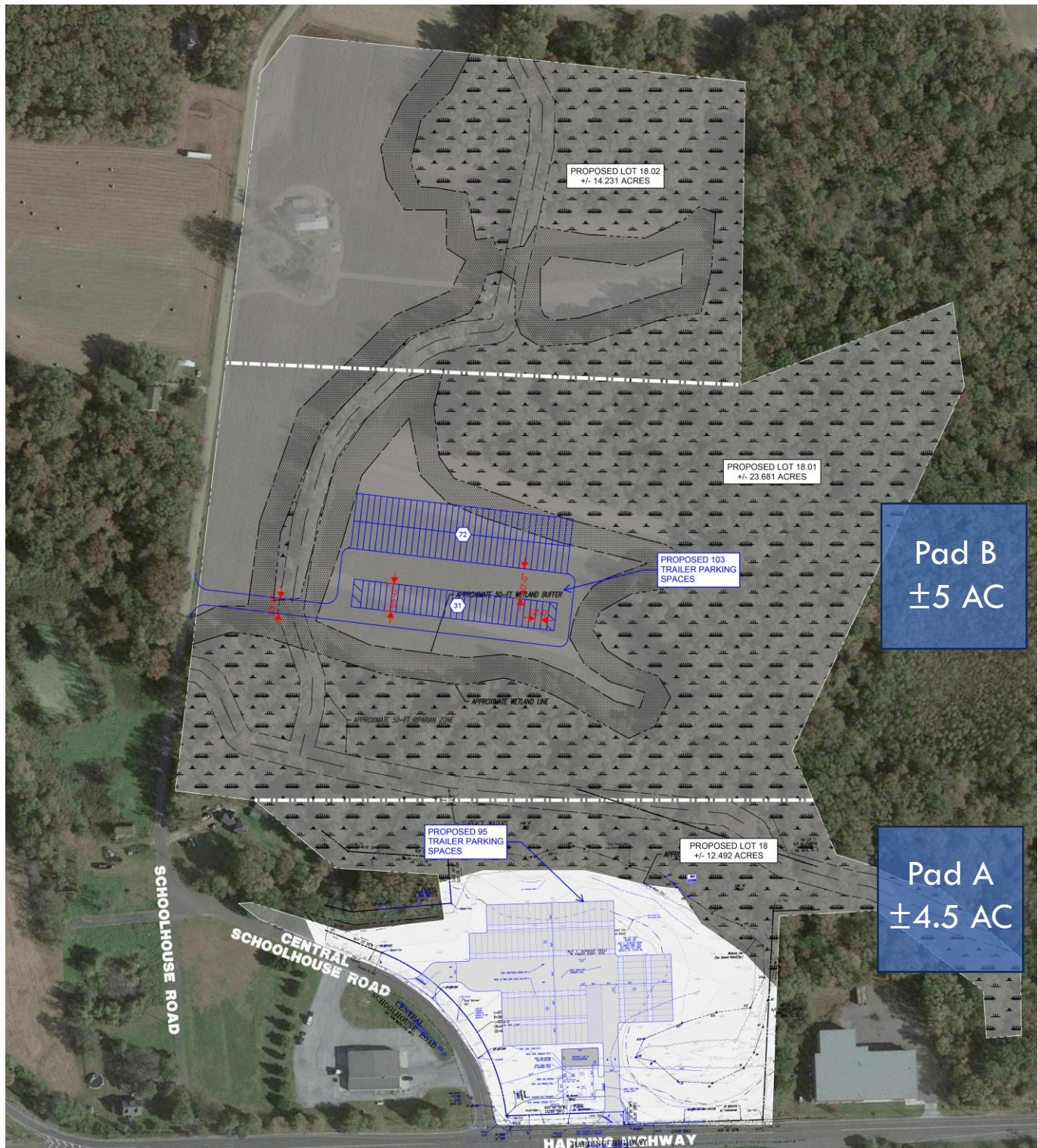
For additional property information or to arrange an inspection, please contact the exclusive brokers:

Jason M. Crimmins, CCIM, SIOR, *President*, 973.379.6644 x 122, [jmcrimmins@blauberg.com](mailto:jmcrimmins@blauberg.com)  
 Alessandro (Alex) Conte, CCIM, SIOR, *Executive Vice President*, 973.379.6644 x 131, [aconte@blauberg.com](mailto:aconte@blauberg.com)  
 Peter J. Murano, Jr., *Managing Executive Director*, 973.379.6644 x 114, [pjmurano@blauberg.com](mailto:pjmurano@blauberg.com)  
 John Longo, *Senior Director*, 973.379.6644 x 129, [jlongo@blauberg.com](mailto:jlongo@blauberg.com)  
 Patrick Clancy, *Associate*, 973.379.6644 x 238, [pclancy@blauberg.com](mailto:pclancy@blauberg.com)

The information contained herein has been obtained from sources considered to be reliable, but no guarantee of its accuracy is made by this company. In addition, no representation is made respecting zoning, condition of title, dimensions, or any matters of a legal or environmental nature. Such matters should be referred to legal counsel for determination. Terms and conditions are subject to change without prior notice. Subject to errors and omissions.



**FOR SALE | 35 CENTRAL SCHOOLHOUSE ROAD | CARNEYS POINT, NJ**  
**Trailer Parking with Maintenance Facility – Concept A**



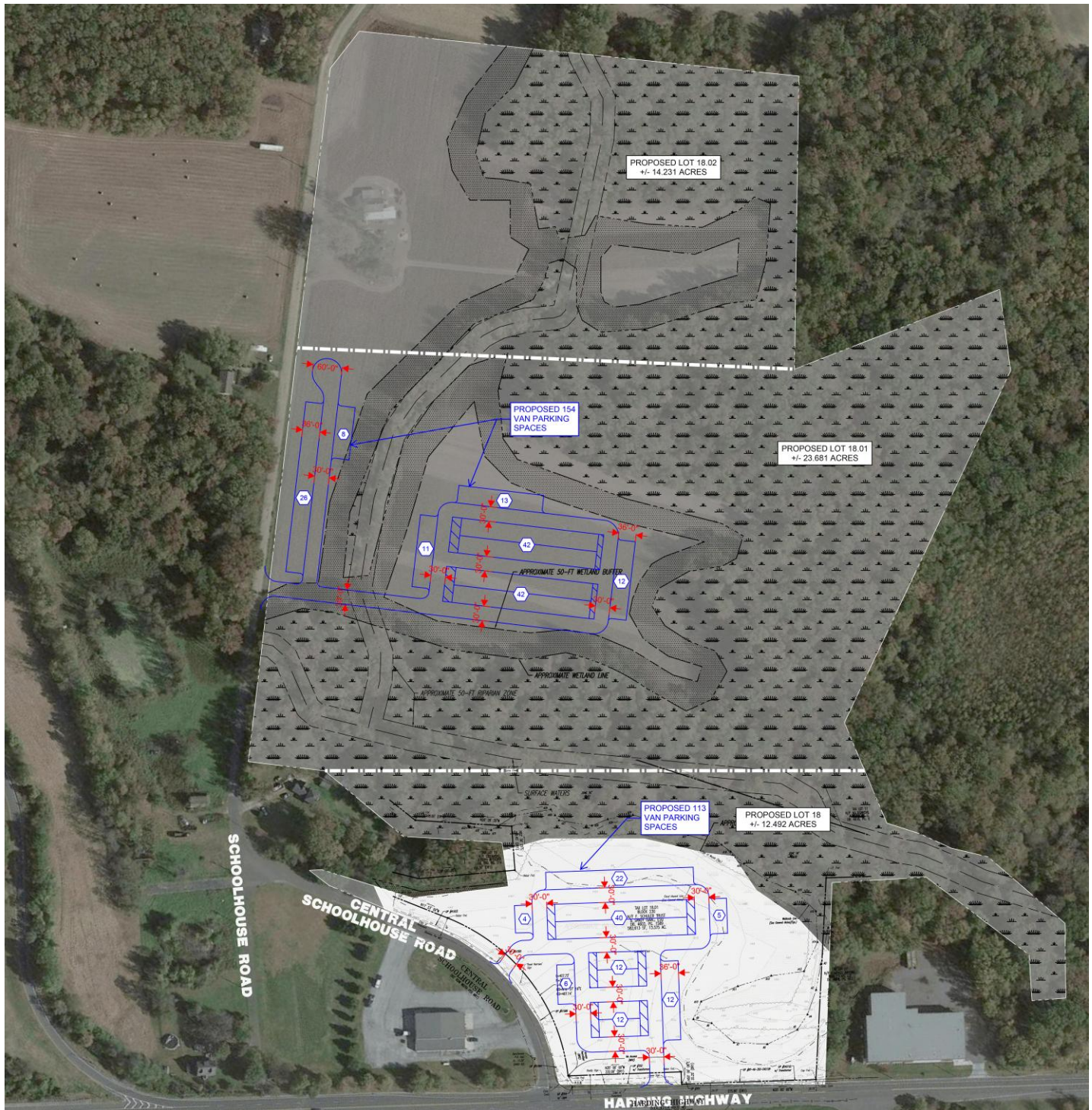
For additional property information or to arrange an inspection, please contact the exclusive brokers:

Jason M. Crimmins, CCIM, SIOR, *President*, 973.379.6644 x 122, [jmcrimmins@blauberg.com](mailto:jmcrimmins@blauberg.com)  
Alessandro (Alex) Conte, CCIM, SIOR, *Executive Vice President*, 973.379.6644 x 131, [aconte@blauberg.com](mailto:aconte@blauberg.com)  
Peter J. Murano, Jr., *Managing Executive Director*, 973.379.6644 x 114, [pjmurano@blauberg.com](mailto:pjmurano@blauberg.com)  
John Longo, *Senior Director*, 973.379.6644 x 129, [jlongo@blauberg.com](mailto:jlongo@blauberg.com)  
Patrick Clancy, *Associate*, 973.379.6644 x 238, [pclancy@blauberg.com](mailto:pclancy@blauberg.com)

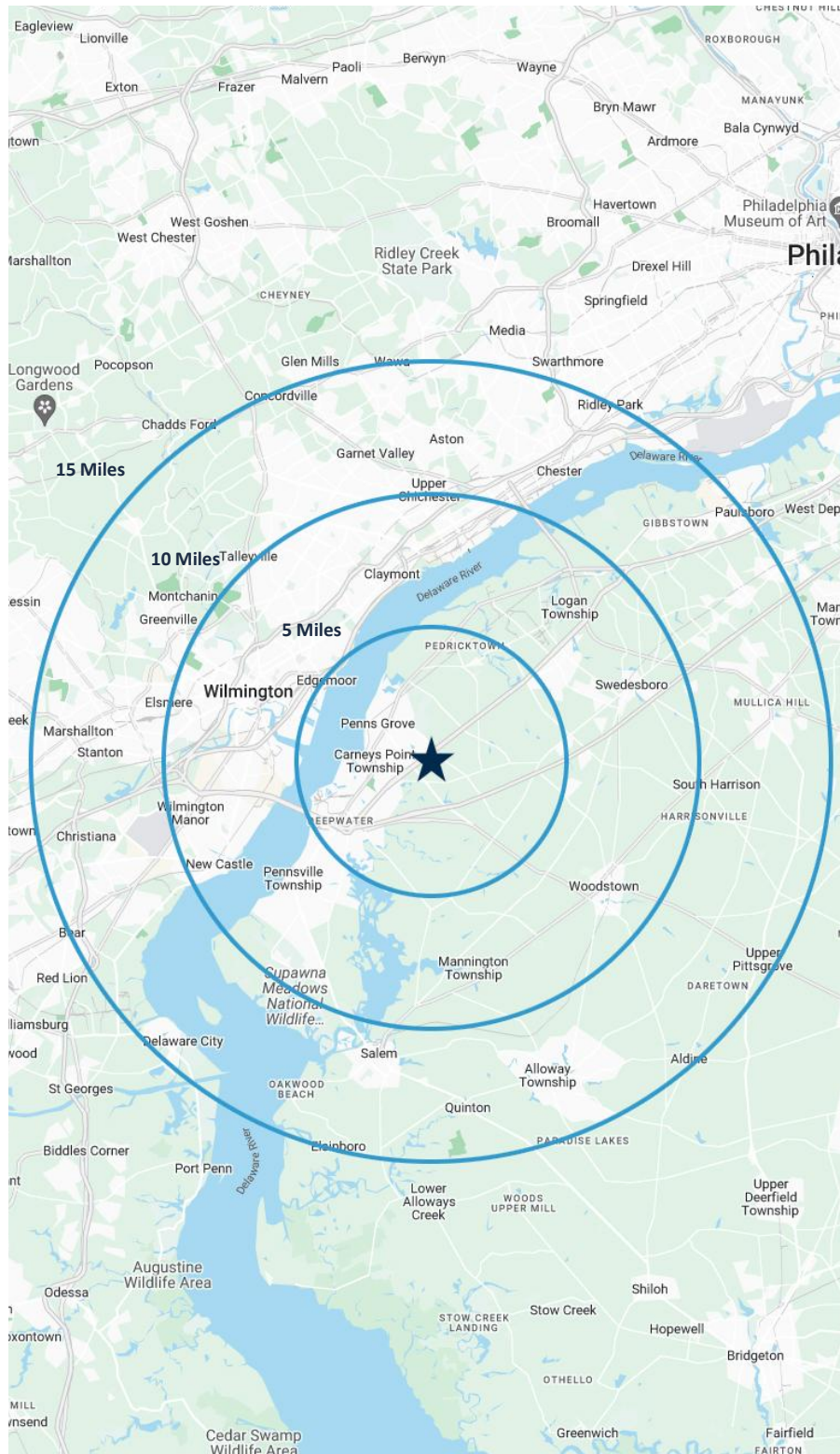
The information contained herein has been obtained from sources considered to be reliable, but no guarantee of its accuracy is made by this company. In addition, no representation is made respecting zoning, condition of title, dimensions, or any matters of a legal or environmental nature. Such matters should be referred to legal counsel for determination. Terms and conditions are subject to change without prior notice. Subject to errors and omissions.



**FOR SALE | 35 CENTRAL SCHOOLHOUSE ROAD | CARNEYS POINT, NJ**  
**Van Parking with Gas – Concept B**







### 5 MILES

- Total Population: 28,779
- Households: 11,397
- Median Household Income: \$84,678
- Average Household Size: 2.5
- Transportation to Work: 12,692
- Labor Force: 22,884

### 10 MILES

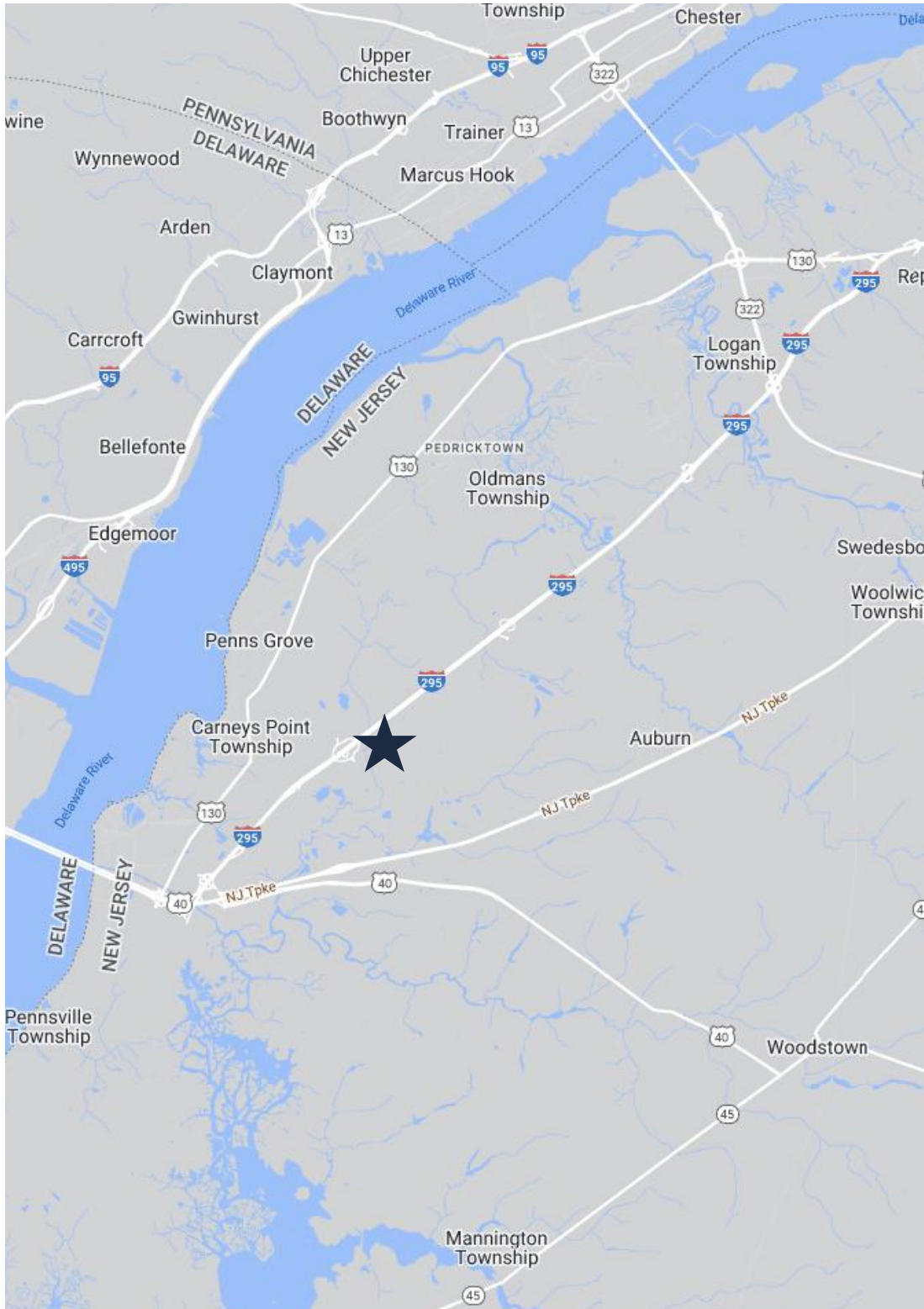
- Total Population: 339,095
- Households: 138,133
- Median Household Income: \$88,085
- Average Household Size: 2.4
- Transportation to Work: 163,788
- Labor Force: 272,702

### 15 MILES

- Total Population: 771,152
- Households: 305,856
- Median Household Income: \$97,990
- Average Household Size: 2.5
- Transportation to Work: 382,951
- Labor Force: 624,513

For additional property information or to arrange an inspection, please contact the exclusive brokers:

Jason M. Crimmins, CCIM, SIOR, *President*, 973.379.6644 x 122, [jmcrimmins@blauberg.com](mailto:jmcrimmins@blauberg.com)  
 Alessandro (Alex) Conte, CCIM, SIOR, *Executive Vice President*, 973.379.6644 x 131, [aconte@blauberg.com](mailto:aconte@blauberg.com)  
 Peter J. Murano, Jr., *Managing Executive Director*, 973.379.6644 x 114, [pjmurano@blauberg.com](mailto:pjmurano@blauberg.com)  
 John Longo, *Senior Director*, 973.379.6644 x 129, [jlongo@blauberg.com](mailto:jlongo@blauberg.com)  
 Patrick Clancy, *Associate*, 973.379.6644 x 238, [pclancy@blauberg.com](mailto:pclancy@blauberg.com)



## ACCESSIBILITY



Located  
at I-295



5.7 MI  
I-95 Exit 2



5.8 MI  
DE Memorial  
Bridge



10.2  
Port of  
Wilmington



22.1 MI  
PA Intl Airport



31.6 MI  
Philadelphia

For additional property information or to arrange an inspection, please contact the exclusive brokers:

Jason M. Crimmins, CCIM, SIOR, *President*, 973.379.6644 x 122, [jmcrimmins@blauberg.com](mailto:jmcrimmins@blauberg.com)  
Alessandro (Alex) Conte, CCIM, SIOR, *Executive Vice President*, 973.379.6644 x 131, [aconte@blauberg.com](mailto:aconte@blauberg.com)  
Peter J. Murano, Jr., *Managing Executive Director*, 973.379.6644 x 114, [pjmurano@blauberg.com](mailto:pjmurano@blauberg.com)  
John Longo, *Senior Director*, 973.379.6644 x 129, [jlongo@blauberg.com](mailto:jlongo@blauberg.com)  
Patrick Clancy, *Associate*, 973.379.6644 x 238, [pclancy@blauberg.com](mailto:pclancy@blauberg.com)

The information contained herein has been obtained from sources considered to be reliable, but no guarantee of its accuracy is made by this company. In addition, no representation is made respecting zoning, condition of title, dimensions, or any matters of a legal or environmental nature. Such matters should be referred to legal counsel for determination. Terms and conditions are subject to change without prior notice. Subject to errors and omissions.