

ADDITIONAL SYMBOLS AND ABBREVIATIONS:

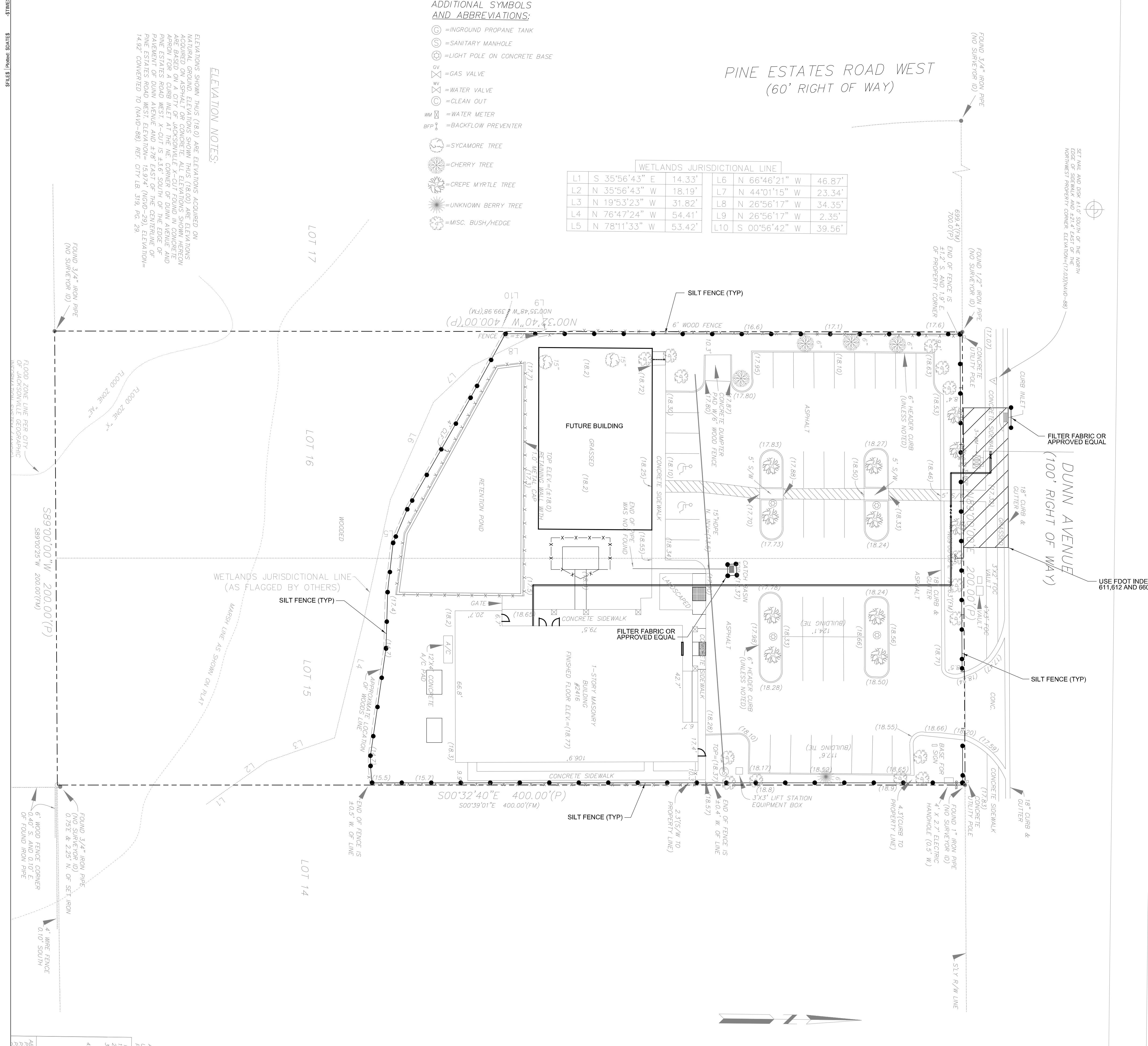
- ⊙ = INGROUND PROPANE TANK
- ⊙ = SANITARY MANHOLE
- ⊙ = LIGHT POLE ON CONCRETE BASE
- ⊗ = GAS VALVE
- ⊗ = WATER VALVE
- ⊙ = CLEAN OUT
- WM = WATER METER
- BFP = BACKFLOW PREVENTER
- ⊙ = SYCAMORE TREE
- ⊙ = CHERRY TREE
- ⊙ = CREPE MYRTLE TREE
- ⊙ = UNKNOWN BERRY TREE
- ⊙ = MISC. BUSH/HEDGE

ELEVATION NOTES:

ELEVATIONS SHOWN THIS (18.0) ARE ELEVATIONS ACQUIRED ON AERIAL PHOTOGRAPHY FROM THIS (18.00) ARE ELEVATIONS ACQUIRED ON ASPHALT OR CONCRETE SURFACES. ELEVATIONS ARE BASED ON A CITY OF JACKSONVILLE X-CUT FOUND IN CONCRETE ARROW FOR A CURB INLET AT THE NE CORNER OF DUNN AVENUE AND PARKWAY OF DUNN AVENUE WEST X-CUT IS 3.16' SOUTH OF THE EDGE OF PAVEMENT OF DUNN AVENUE AND 4.78' EAST OF THE CENTERLINE OF PAVEMENT OF DUNN AVENUE WEST. ELEVATION = 15.974 (NGD=29), ELEVATION = 14.52 (CONVERTED TO (NAD=83), REF: CITY LB. 519, PG. 29.

PINE ESTATES ROAD WEST (60' RIGHT OF WAY)

WETLANDS JURISDICTIONAL LINE					
L1	S 35°56'43" E	14.33'	L6	N 66°46'21" W	46.87'
L2	N 35°56'43" W	18.19'	L7	N 44°01'15" W	23.34'
L3	N 19°53'23" W	31.82'	L8	N 26°56'17" W	34.35'
L4	N 76°47'24" W	54.41'	L9	N 26°56'17" W	2.35'
L5	N 78°11'33" W	53.42'	L10	S 00°56'42" W	39.56'



NOTES:

1. THIS EROSION AND SEDIMENT CONTROL PLAN SHOWS THE MINIMUM CONTROLS NEEDED. THE CONTRACTOR IS RESPONSIBLE FOR, AND MAY NEED TO INSTALL, ADDITIONAL EROSION AND SEDIMENT CONTROL DEVICES TO MEET LOCAL, STATE AND FEDERAL REQUIREMENTS.
2. CONTRACTOR SHALL AT A MINIMUM IMPLEMENT THE ENGINEER'S REQUIREMENTS OUTLINED BELOW AND THOSE MEASURES SHOWN ON THE EROSION AND SEDIMENT CONTROL PLAN. IN ADDITION THE CONTRACTOR SHALL UNDERTAKE ADDITIONAL MEASURES REQUIRED TO BE IN COMPLIANCE WITH APPLICABLE PERMIT CONDITIONS AND STATE WATER QUALITY STANDARDS. DEPENDING ON THE NATURE OF MATERIALS AND METHODS OF CONSTRUCTION THE CONTRACTOR MAY BE REQUIRED TO ADD FLOCCULANTS TO THE RETENTION SYSTEM PRIOR TO PLACING THE SYSTEM INTO OPERATION.
3. THE SITE CONTRACTOR IS RESPONSIBLE FOR REMOVING THE TEMPORARY EROSION AND SEDIMENT CONTROL DEVICES AFTER COMPLETION OF CONSTRUCTION AND ONLY WHEN AREAS HAVE BEEN STABILIZED.
4. THE CONTRACTOR IS RESPONSIBLE FOR THE REMOVAL OF ANY SEDIMENT THAT LEAVES THE SITE.
5. THE CONTRACTOR SHALL PAY FOR ANY WATER QUALITY CONTROL VIOLATIONS FROM ANY AGENCY THAT RESULTS IN FINES BEING ASSESSED TO THE OWNER BECAUSE OF THE CONTRACTOR'S FAILURE TO ELIMINATE TURBID RUNOFF FROM LEAVING THE SITE AND RAISING BACKGROUND LEVELS.
6. WITHIN 48 HOURS PRIOR TO THE START OF CONSTRUCTION, THE CONTRACTOR IS RESPONSIBLE FOR PREPARING AND SUBMITTING THE APPLICATION FORM ENTITLED "NPDES STORMWATER NOTICE OF INTENT TO USE MULTI-SECTOR GENERIC PERMIT FOR STORMWATER DISCHARGE FROM LARGE AND SMALL CONSTRUCTION ACTIVITIES" (FDEP FORM 62-621.300(4)(B), EFFECTIVE MAY 1, 2003). THE CONTRACTOR IS ALSO RESPONSIBLE FOR PREPARING AND CONTINUALLY MAINTAINING A STORMWATER POLLUTION PREVENTION PLAN (SWPP).
7. PRIOR TO THE END OF CONSTRUCTION, THE CONTRACTOR IS RESPONSIBLE FOR PREPARING AND SUBMITTING THE APPLICATION FOR ENTITLED "NPDES STORMWATER NOTICE OF TERMINATION (FDEP FORM 62-621.300(6), EFFECTIVE APRIL 20, 2005). ALL COMPLETED FORMS MUST BE SUBMITTED TO:

NPDES STORMWATER NOTICES CENTER, MS #2510
 FLORIDA DEPARTMENT OF ENVIRONMENTAL PROTECTION
 2600 BLAIR STONE ROAD, TALLAHASSEE, FLORIDA 32399-2400

8. SEE EROSION AND SEDIMENT CONTROL DETAILS & STORM WATER POLLUTION PREVENTION PLAN SHEET NO. 7 FOR ADDITIONAL EROSION AND SEDIMENT CONTROL REQUIREMENTS.

No.	Date	Description	Initials

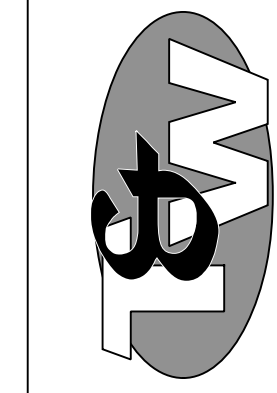
R E V I S I O N S

Professional Engineer

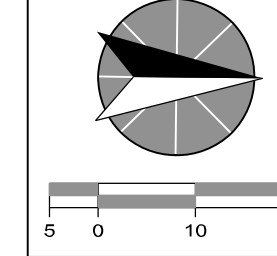
**Erosion Control/
Maintenance of Traffic Plan**

**Fire Protection @
2416 Dunn Avenue**

Taylor & White, Inc.
 Civil Design & Consulting Engineers
 9556 Historic Kings Road S., Suite 102
 Jacksonville, Florida 32257
 Phone: 904-466-9851
 www.taylorandwhite.com



Scale: 1"=20'
 Proj. Mgr: G. Taylor
 Designer: R. Howard
 Drawn by: R. Howard
 Certificate of Auth: 7298



Project No.: 17250
 Date: August 9, 2017
 DWG No.: MOT-1
 Sheet No.: 6

- MAINTENANCE OF TRAFFIC REQUIREMENTS**
1. ANY MODIFICATIONS OF THIS MAINTENANCE OF TRAFFIC PLAN SHALL BE SUBMITTED TO THE CITY OF JACKSONVILLE, TRAFFIC ENGINEERING DIVISION FOR REVIEW AND APPROVAL PRIOR TO IMPLEMENTATION.
 2. PROJECT WORK HOURS ARE BETWEEN 7:00AM TO 7:00PM ON RESIDENTIAL STREETS, AND 9:00AM TO 4:00 PM ON COLLECTOR OR ARTERIAL STREETS.
 3. CONTRACTOR MUST MAINTAIN EXISTING SIGNING. IF SIGNS ARE DAMAGED DUE TO HIS ACTIVITY, THE CONTRACTOR IS REQUIRED TO REPLACE THEM IN ACCORDANCE WITH CURRENT CITY STANDARD SPECIFICATIONS IMMEDIATELY.
 4. THIRTY FOOT RADII ARE REQUIRED AT ALL INTERSECTIONS WHERE THE ROADWAY IS REBUILT.
 5. ACCESS TO ALL STREETS AND DRIVEWAYS TO BE MAINTAINED AT ALL TIMES.
 6. IF SIDEWALKS ARE DISTURBED AND HAVE TO BE REPLACED, HANDICAP RAMPS ARE TO BE INSTALLED.
 7. THE CONTRACTOR SHALL CONFINE HIS ACTIVE WORK AREA TO NO MORE THAN ONE BLOCK AT A TIME.
 8. THE ROADWAY SHALL BE RESTORED TO AT LEAST A LIME ROCK SURFACE BEFORE IT IS REOPENED TO TRAFFIC, AND BEFORE THE CONTRACTOR MOVES ON TO THE NEXT CONSTRUCTION ZONE.
 9. DUST CONTROL MEASURES SHALL BE IMPLEMENTED ON ALL UNPAVED SURFACES UNTIL PAVED.
 10. WHERE CONSTRUCTION PHASING IS NOT SHOWN ON PLANS, OR IF CONTRACTOR WANTS TO ALTER THE PHASING SHOWN, CONTRACTOR IS TO SUBMIT PHASING PLAN WITH A PROPOSED CONSTRUCTION SCHEDULE TO TRAFFIC ENGINEERING PRIOR TO CONSTRUCTION.
 11. CONTRACTOR SHALL NOTIFY TRAFFIC ENGINEERING DIVISION (387-8861) A MINIMUM OF 5 WORKING DAYS PRIOR TO IMPLEMENTATION OF M.O.T.
 12. TRAFFIC SIGNAL VEHICLE LOOPS SHALL BE RESTORED TO PROPER ORIENTATION WITH 36 HOURS OF BEING DESTROYED OR DAMAGED. CONTACT TERRY SANDEN AT 387-8871 OR MASON BOYD AT 387-8857 A MINIMUM OF 48 HOURS PRIOR TO WORKING NEAR A SIGNALIZED INTERSECTION.
 13. NO LANE CLOSURES FROM 6:00 AM TO 7:00 PM WEEKDAYS. NO RESTRICTIONS ON WEEKENDS.