

EASTPORT COMMERCE CENTER

104 PINNACLE WAY, SUMMERVILLE, SC 29483
MULTIPLE SUITES AVAILIBLE | 8,000 - 56,000 SF

Dalfen
INDUSTRIAL

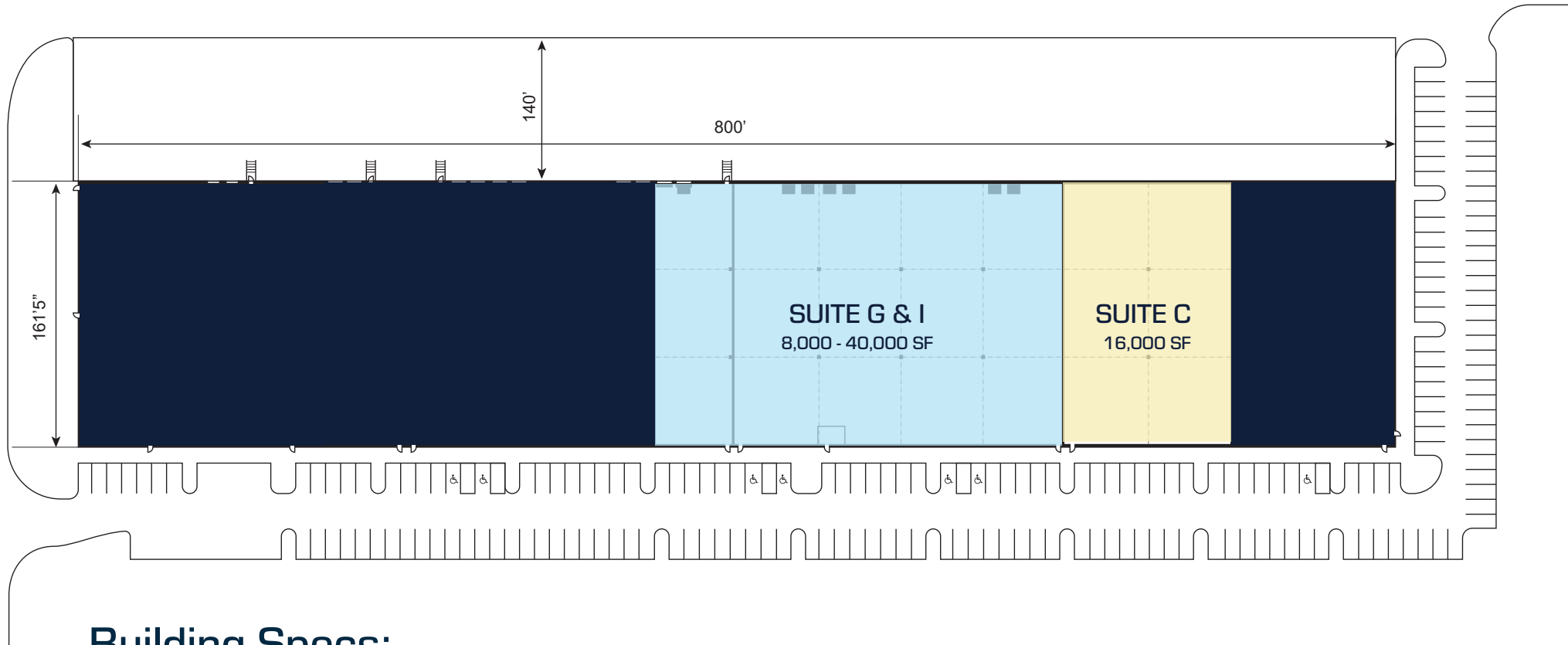


Bob Barrineau
Senior Vice President
+1 843 270 7851
Robert.Barrineau@cbre.com

Brendan Redeyoff, SIOR
Senior Vice President
+1 843 793 8839
Brendan.Redeyoff@cbre.com

CBRE

SITE PLAN



Building Specs:



30' Clear Height



50' X 50' Columns with 60' Speed Bay



ESFR Sprinkler System



25 FC LED Lighting



Tilt Wall Construction

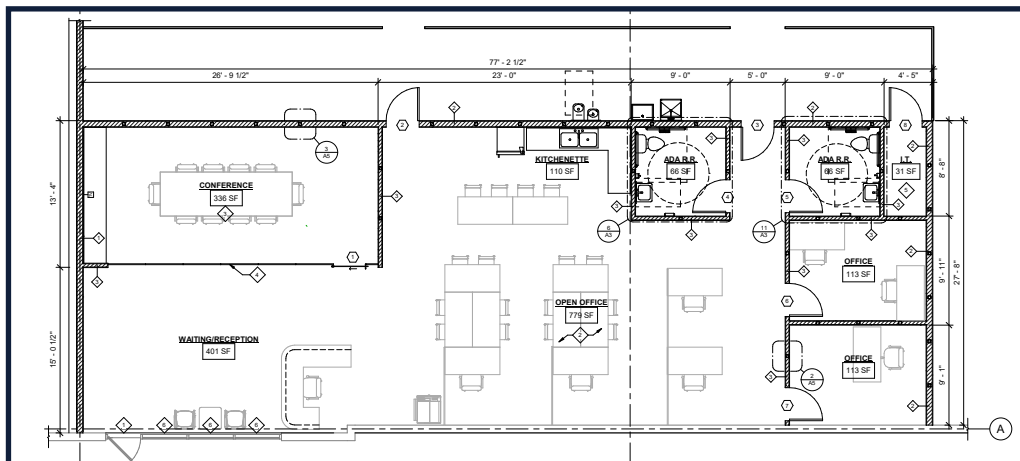


140' Truck Court

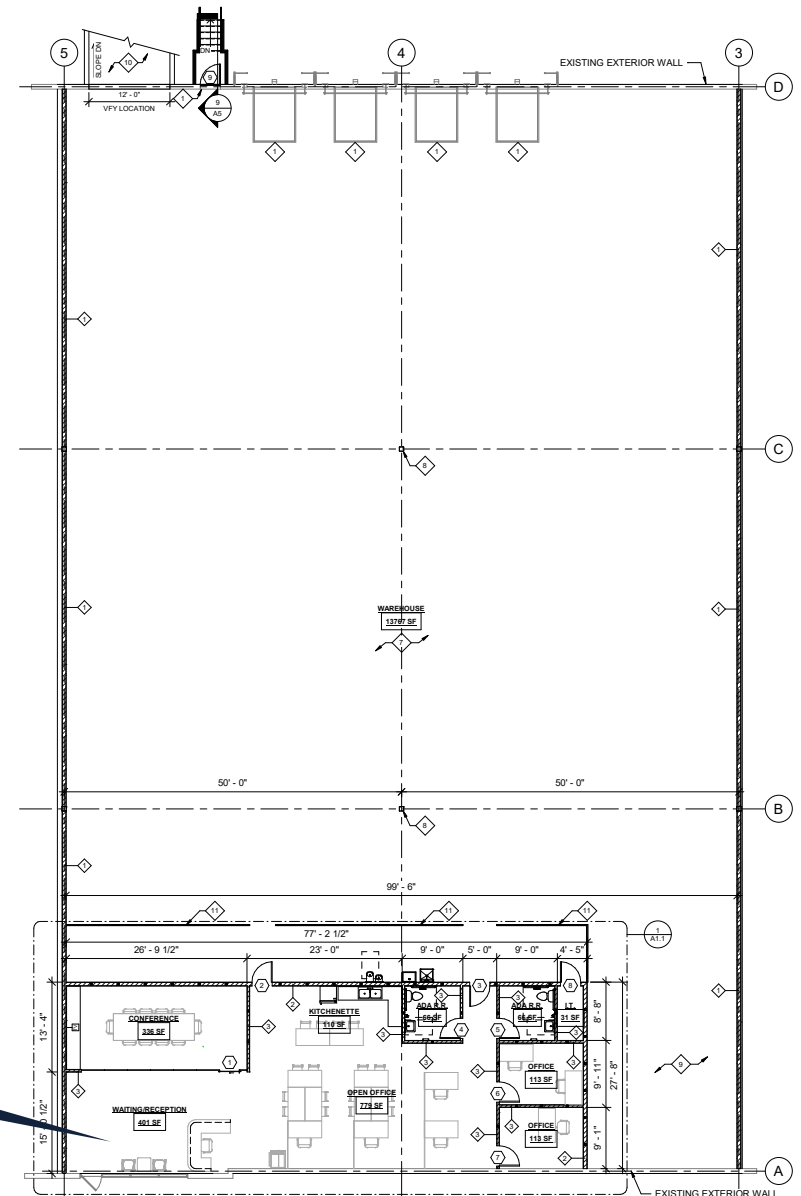
SUITE C

Specs:

- Size: 16,000 SF
- Office: 2,233 SF
- Power: 400 Amp 3 Phase 480v
- Drive-In Door: One 12' X 14' with Ramp Access
- Dock High Doors: Four 9' X 10' with Bumpers
2 with Pit Levelers
- Parking: 24 Auto Parking Spaces



2,233 SF OFFICE AREA

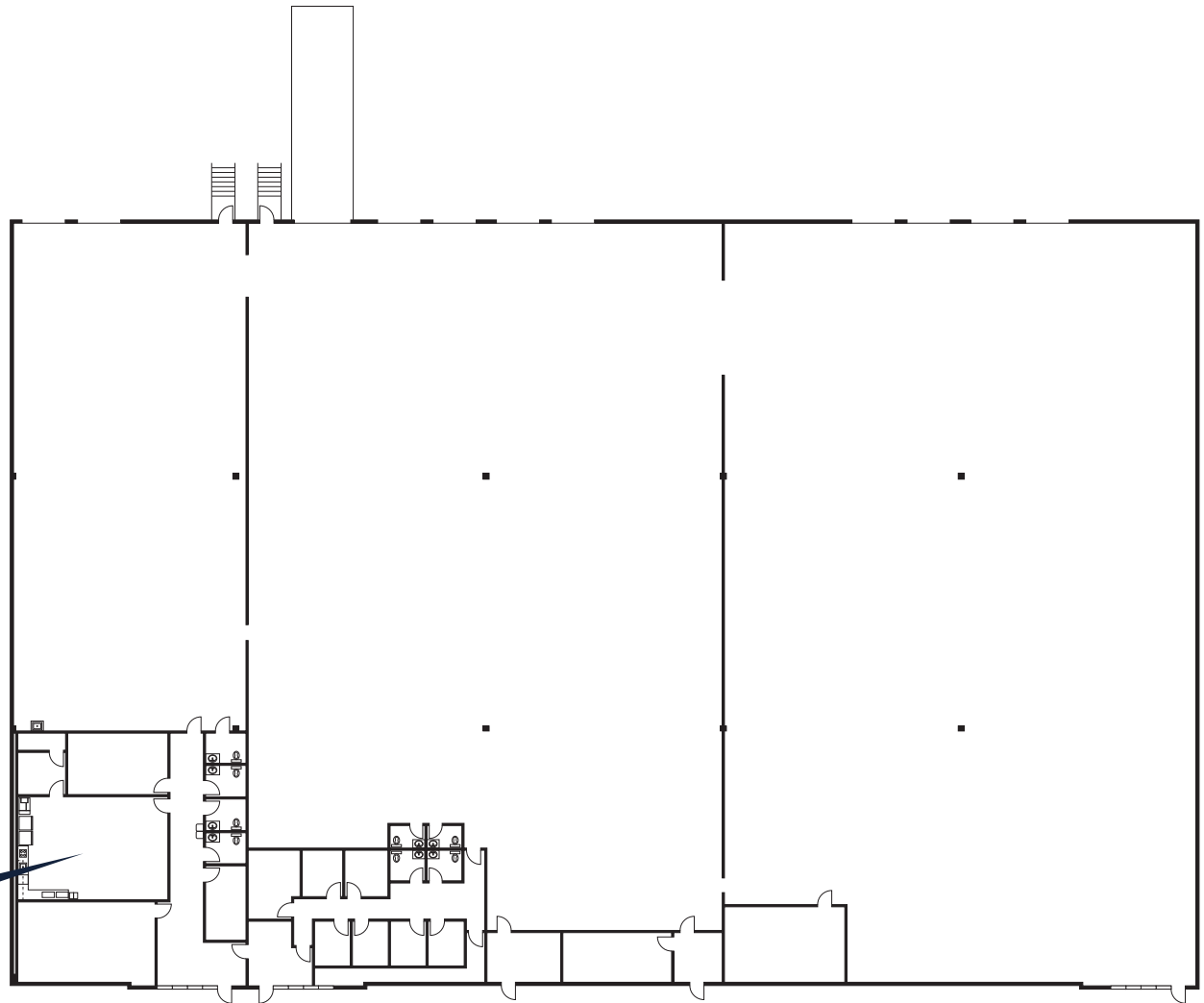


SUITE G/I

Specs:

- **Size:** 8,000 - 40,000 SF
- **Office:** 2,500 - 4,000 SF
- **Drive-In Door:** One 12' X 14'
with Ramp Access
- **Dock High Doors:** Ten 9' X 10'
4 with Pit Levelers
- **Parking:** Non-Designated
- **Eight Large Warehouse Fans**

2,500 - 4,000 SF OFFICE AREA



SUITE G/I PHOTOS



LOCATION ACCESS



BOSCH *Scout BOATS* **FRUIT OF THE LOOM**
ZINUS **SVE** **SH**
SOUTHEASTERN FREIGHT LINES **SAGEBROOK HOME**
CURTISS-WRIGHT **TWIN STAR HOME**
KION GROUP **BAE SYSTEMS** **IFA**
VOLVO **HOOD PACKAGING CORPORATION** **amerCare**
THORNE CALI **TBC CORPORATION**
PODS **sam's club**
KONTANE **Gerber** **SPYDER**

MASTER PLANNED COMMUNITIES

GOOSE CREEK/ MONCK'S CORNER

VALLEY FORGE **Parker** **AR** *AR Logistics*
The Greatest Name On Wheels **Century ALUMINUM** **Google**
JW Aluminum **SEN/FOX** **ALCOA**
AGFA **Worley** **LANXESS** **KNAPHEIDE**
AGFA *WORLDWIDE INDUSTRIES* *EMERGING CHEMISTRY* *SINCE 1848*
kemira **SunChemical** **Nexans** **Freemantle**
a member of the DIC group *an AECOM company* *BOATWORKS*
symrise **Phillips** **HAITIAN ABSOLUTE**
POWER TO CREATE **INDUSTRIAL SERVICES** **AT**
W INTERNATIONAL **NUCOR** **XPO Logistics**

104 Pinnacle Way

EXIT 194

I-26 CORRIDOR

EXIT 197

EXIT 199

GOOSE CREEK

LADSON/PALMETTO

Comcast xfinity **Cummins** **ROPER ST. FRANCIS**
SHIMANO
BOEING **TIGHITCO**
AHT

EXIT 203

EXIT 205

LADSON/PALMETTO

Naval Information Warfare Center ATLANTIC

HANAHAN



EASTPORT COMMERCE CENTER

104 PINNACLE WAY, SUMMERVILLE, SC 29483

MULTIPLE SUITES AVAILIABLE | 8,000 - 56,000 SF

Dalfen
INDUSTRIAL



CONTACT US:

Bob Barrineau

Senior Vice President

+1 843 270 7851

Robert.Barrineau@cbre.com

Brendan Redeyoff, SIOR

Senior Vice President

+1 843 793 8839

Brendan.Redeyoff@cbre.com

CBRE

© 2026 CBRE, Inc. All rights reserved. This information has been obtained from sources believed reliable but has not been verified for accuracy or completeness. CBRE, Inc. makes no guarantee, representation or warranty and accepts no responsibility or liability as to the accuracy, completeness, or reliability of the information contained herein. You should conduct a careful, independent investigation of the property and verify all information. Any reliance on this information is solely at your own risk. CBRE and the CBRE logo are service marks of CBRE, Inc. All other marks displayed on this document are the property of their respective owners, and the use of such marks does not imply any affiliation with or endorsement of CBRE. Photos herein are the property of their respective owners. Use of these images without the express written consent of the owner is prohibited.