

FOR LEASE

PARADISE PROFESSIONAL CENTER

5643 Paradise Dr, Corte Madera, CA 94925



The information herein has not been independently verified by the real estate brokers. Interested parties should have experts of their choice inspect and verify all information. Real estate brokers are not experts with respect to building construction, environmental, legal, tax, and other such matters.

JAMES SCHULTZ

CA LIC #02232628

(415) 762-8079

james@meridiancommercial.com



17 E. Sir Francis Drake Blvd., Suite 203 | Larkspur, CA 94939 | <https://www.meridiancommercial.com>

FOR LEASE

Property Summary

PARADISE PROFESSIONAL CENTER

5643 Paradise Dr, Corte Madera, CA 94925



PROPERTY DESCRIPTION

Two small suites are available in Corte Madera, each offering a distinct and efficient use. One suite is ideally suited for a therapist or counseling professional, providing a quiet, private, and comfortable environment appropriate for client meetings, while the second suite functions well as a small artist or creative studio with a flexible layout suitable for hands-on or design-oriented work. Both spaces benefit from a convenient location with easy access, nearby parking, and close proximity to local amenities and Highway 101.

PROPERTY HIGHLIGHTS

- Ample onsite parking
- Nearby amenities and dining options
- Professional management

SPACES	LEASE RATE	SPACE SIZE
11	\$995 per month	583 SF
10	\$350 per month	139 SF

LOCATION DESCRIPTION

Paradise Professional Center, a well-established commercial property in the heart of Corte Madera that caters to professional offices and service-oriented tenants. The building offers quiet, professional office space with onsite parking and flexible suite configurations. Its proximity to Highway 101 provides excellent regional access for clients and staff commuting throughout Marin County and to San Francisco.

OFFERING SUMMARY

Lease Rate:	\$350.00 - 995.00 per month (MG)
Number of Units:	2
Available SF:	±139 - 583 SF
Lot Size:	±22,138 SF
Building Size:	±6,114 SF
Property Type:	Office
Zoning:	C-1

JAMES SCHULTZ

CA LIC #02232628
(415) 762-8079

james@meridiancommercial.com



FOR LEASE

Additional Photos

PARADISE PROFESSIONAL CENTER

5643 Paradise Dr, Corte Madera, CA 94925



JAMES SCHULTZ

CA LIC #02232628

(415) 762-8079

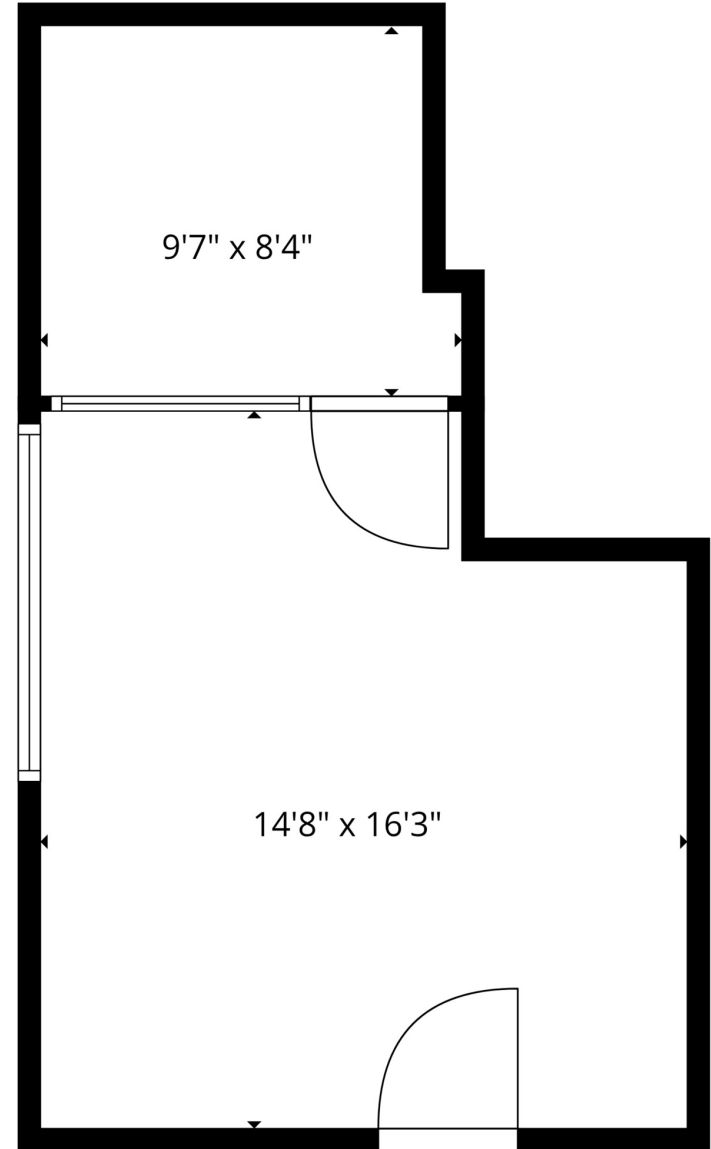
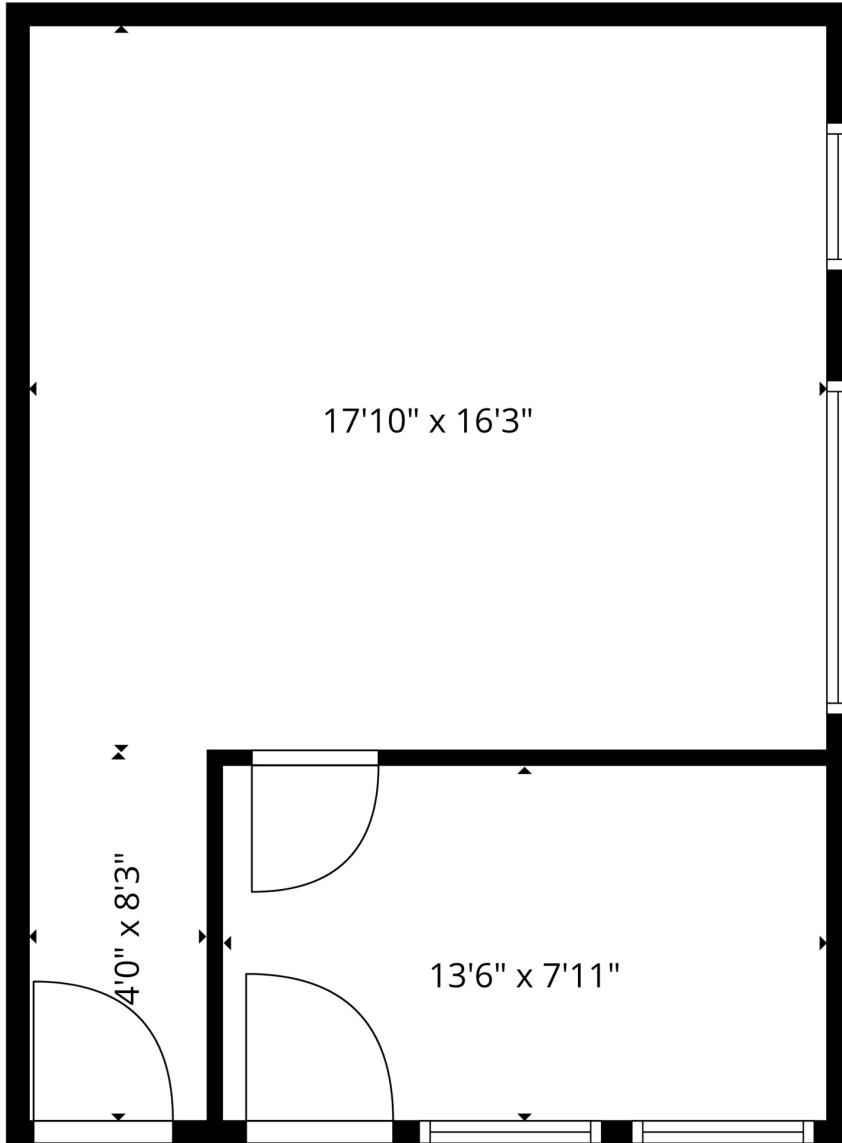
james@meridiancommercial.com

FOR LEASE

Floor Plans

PARADISE PROFESSIONAL CENTER

5643 Paradise Dr, Corte Madera, CA 94925



JAMES SCHULTZ

CA LIC #02232628

(415) 762-8079

james@meridiancommercial.com

