



222 N Garden St - Suite 200 | Visalia, CA

Property For Lease

1005 N Demaree St
Visalia, California 93291
O | 559.754.3020
F | 559.429.4016
www.mdgre.com

GRAHAM | **& ASSOCIATES**

to learn more, visit: www.mdgre.com

Matt Graham
Lic# 01804235

222 N Garden St - Suite 200 | Visalia, CA

GRAHAM | & ASSOCIATES

Property For Lease

PROPERTY DETAILS

Address 222 N Garden St - Suite 200 | Visalia, CA

Square Feet Available 1,230 +/- Sq. Ft.

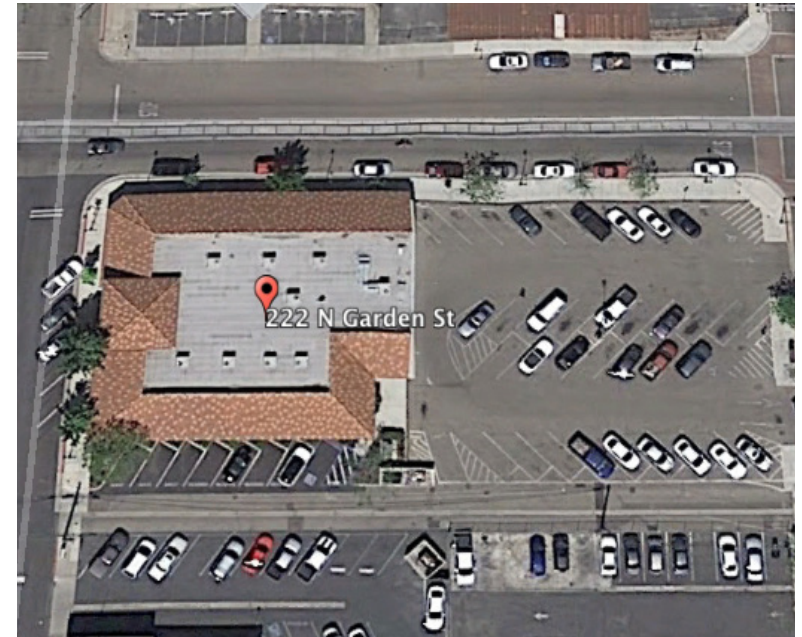
Zoning CDT

Lease Rate \$1.75 Per Sq. Ft.

Lease Type NNN

Additional Comments:

Beautiful 'Class A' office space available in downtown Visalia. The suite contains multiple private offices, large bullpen area, reception area, break room and copy area. Located within walking distance to all downtown amenities - restaurants, shopping, banking and much more! On-site and city parking available nearby. Please call for further details.



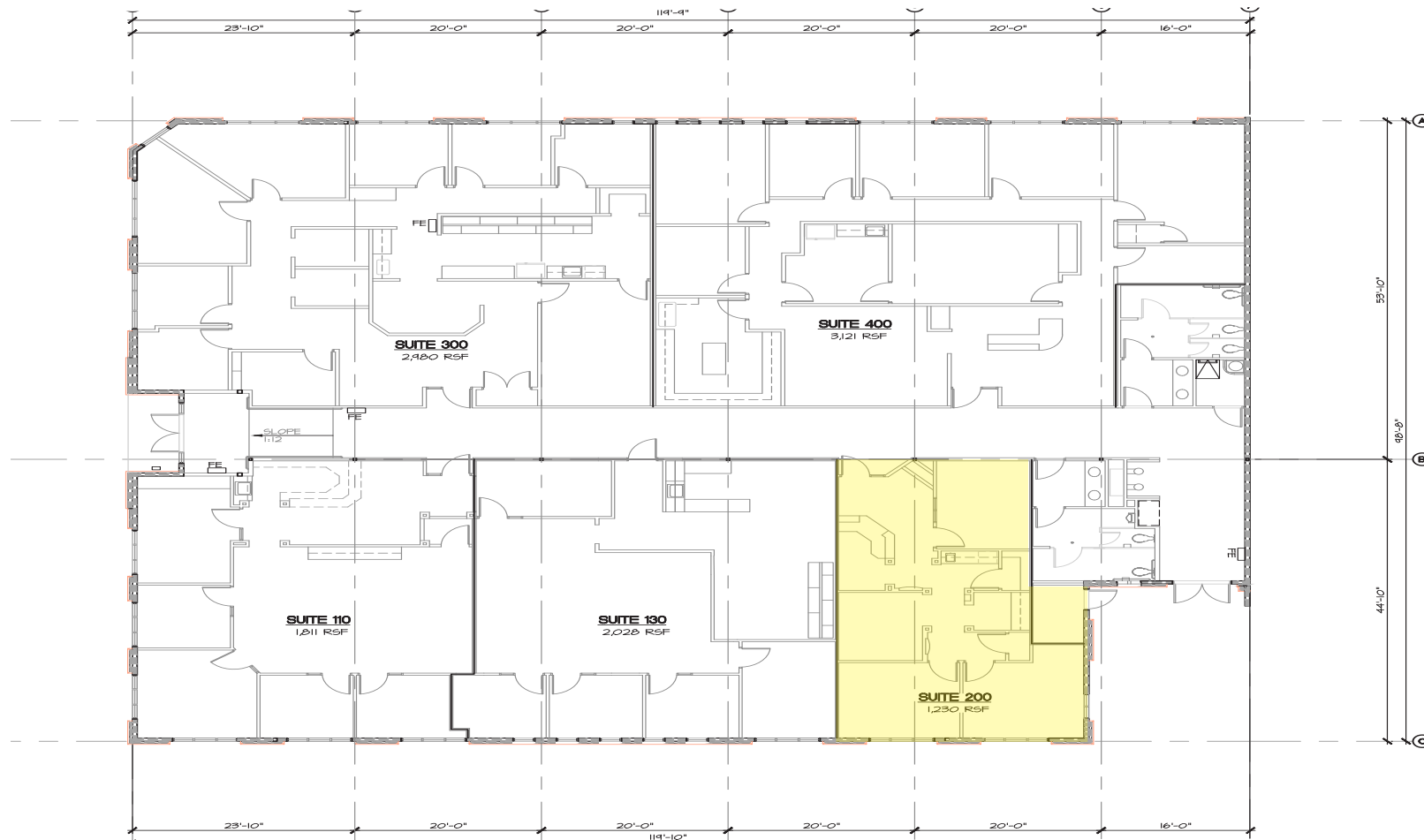
Contact Broker:
Matt Graham
Lic# 01804235

to learn more, visit: www.mdgre.com

1005 N Demaree Street
Visalia, California 93291
O | 559.754.3020

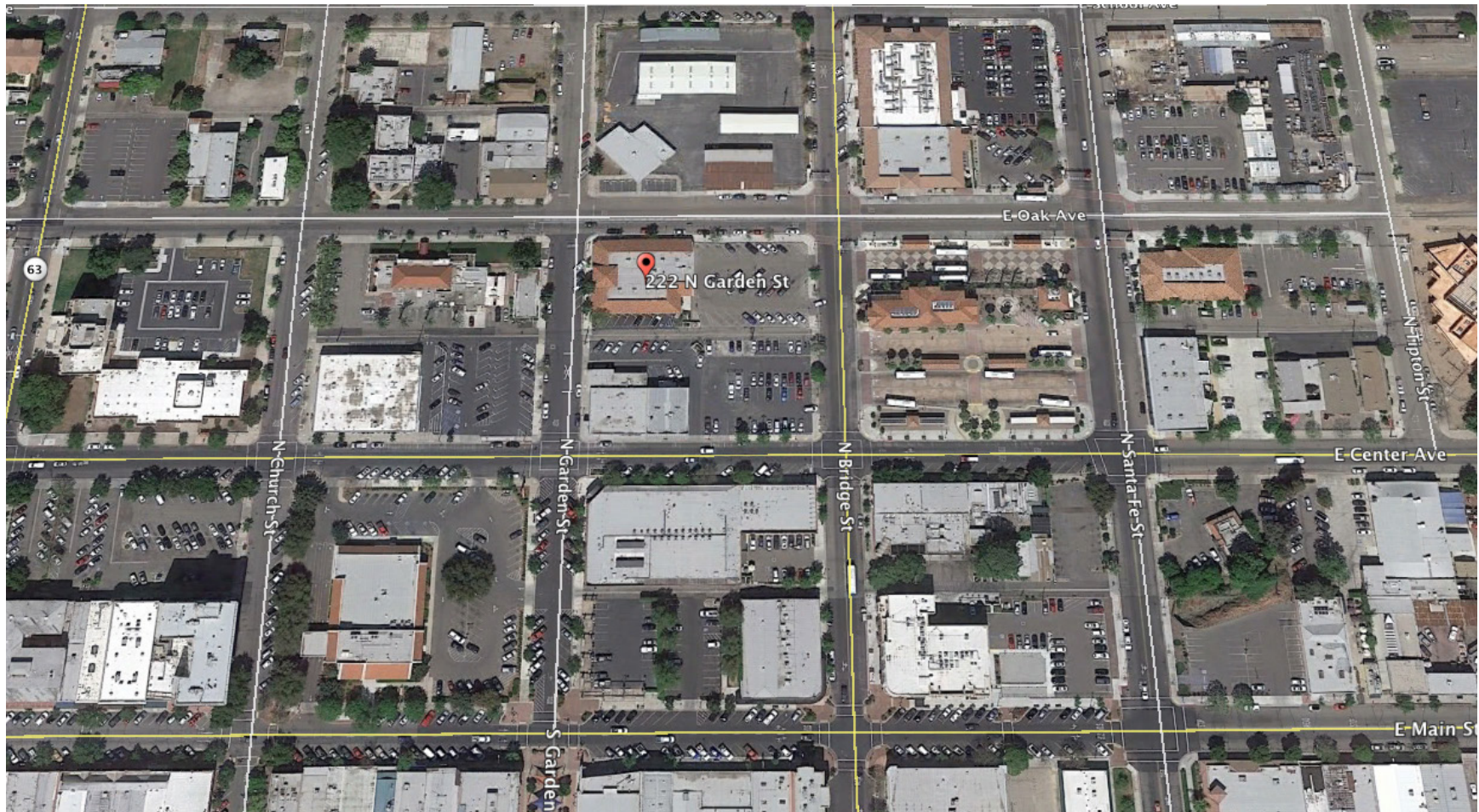
PLEASE NOTE: ALL INFORMATION AND REPRESENTATION MADE HEREIN, WHILE NOT GUARANTEED, HAVE BEEN SECURED FROM SOURCES WE BELIEVE TO BE RELIABLE, HOWEVER, THEY ARE NOT WARRANTED BY MATT GRAHAM & ASSOCIATES AND ARE SUBJECT TO CHANGE WITHOUT NOTICE.

FLOOR PLAN



PLEASE NOTE: ALL INFORMATION AND REPRESENTATION MADE HEREIN, WHILE NOT GUARANTEED, HAVE BEEN SECURED FROM SOURCES WE BELIEVE TO BE RELIABLE, HOWEVER, THEY ARE NOT WARRANTED BY MATT GRAHAM & ASSOCIATES AND ARE SUBJECT TO CHANGE WITHOUT NOTICE.

PROPERTY LAYOUT



PLEASE NOTE: ALL INFORMATION AND REPRESENTATION MADE HEREIN, WHILE NOT GUARANTEED, HAVE BEEN SECURED FROM SOURCES WE BELIEVE TO BE RELIABLE, HOWEVER, THEY ARE NOT WARRANTED BY MATT GRAHAM & ASSOCIATES AND ARE SUBJECT TO CHANGE WITHOUT NOTICE.