



Commercial Lease Available

ONE

Sotheby's

INTERNATIONAL REALTY

930 S Harbor City Blvd, 100

Melbourne, FL 32901

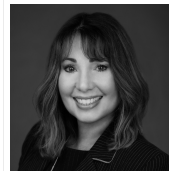


OFFERED AT **\$5,855.83/ Mo.**

3343 sq.ft space newly built out medical space available! . One first floor right by building entrance!! Large waiting area, many exam rooms, large open nurses area, private bathrooms, multiple entrances/exits. First floor with lots of floor to ceiling windows through out. Beautiful 5 story professional office building with some offices overlooking the intracoastal! Lobby, common area bathrooms and elevator are completely renovated. CAM charges are \$7.02 a sq.ft. Garage spaces available for rent at \$125 a month. Plenty of outside parking! Close to airport and major employers. High visibility on busy Harbor City Blvd. (32,000 cars per day).



For more information, please contact me.



Donna Ellis

Global Real Estate Advisor

321.480.9703

donnaellis8962@gmail.com

Visit us online at DonnaEllis.onesothebysrealty.com

© 2021 ONE Sotheby's International Realty. All rights reserved. Sotheby's International Realty® and the Sotheby's International Realty Logo are service marks licensed to Sotheby's International Realty Affiliates LLC and used with permission. ONE Sotheby's International Realty fully supports the principles of the Fair Housing Act and the Equal Opportunity Act. Each franchise is independently owned and operated. Any services or products provided by independently owned and operated franchisees are not provided by, affiliated with or related to Sotheby's International Realty Affiliates LLC nor any of its affiliated companies. The information contained herein is deemed accurate but not guaranteed. Pricing subject to change without notice.