



OXFORD LOGISTICS CENTER
450,000 SF BTS
OPPORTUNITY

NEWMARK

BUILDING OVERVIEW

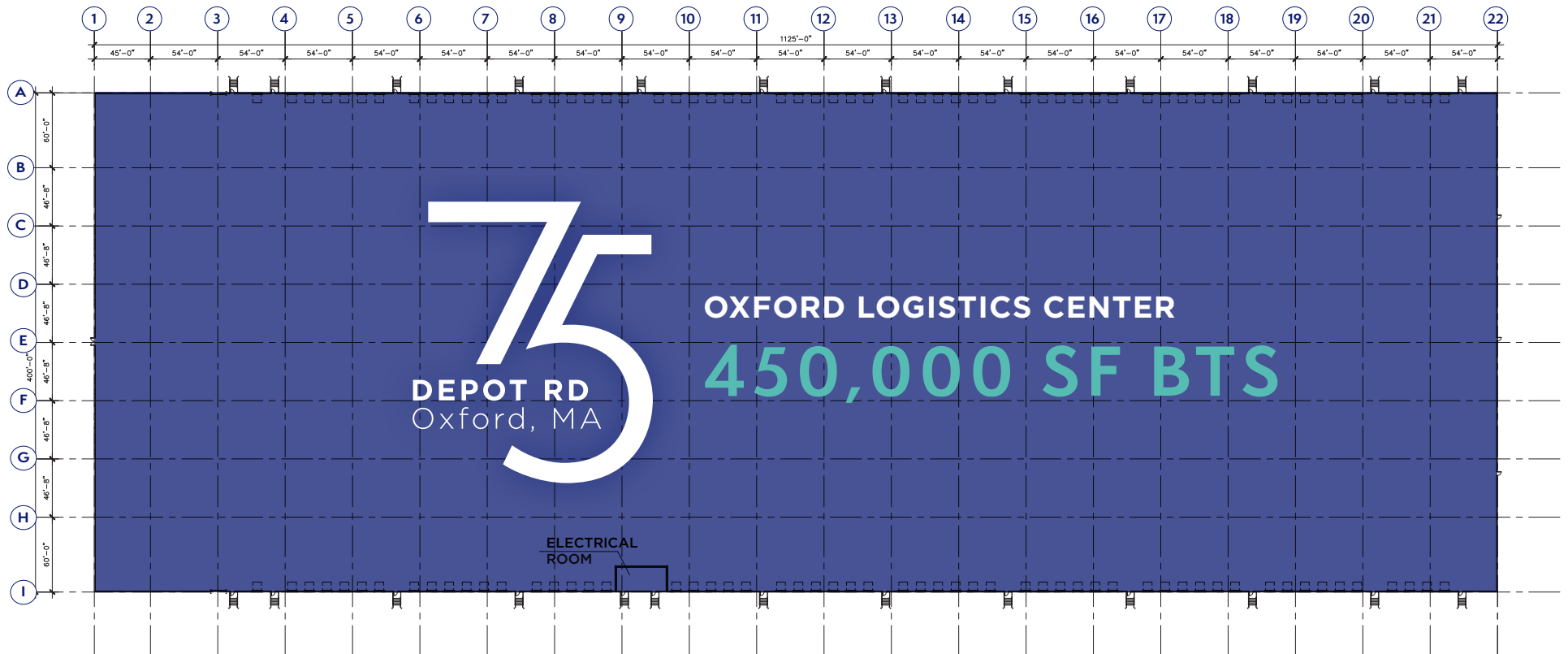
ADDRESS	75 Depot Road, Oxford Oxford Logistics Center
SF	450,000 BTS
ACRES	130
CLEAR HEIGHT	32' clear
COLUMNS	TBD
LOADING DOCKS	114
POWER	National Grid - (2) 3000 AMP feeds at 480V 3p
SPRINKLERS	ESFR
SEWER	Septic
WATER	Municipal
LIGHTING	Industry Standard - 30 foot candles at 3 feet
TRAILER SPACES	134
PARKING SPACES	308



SITE PLAN

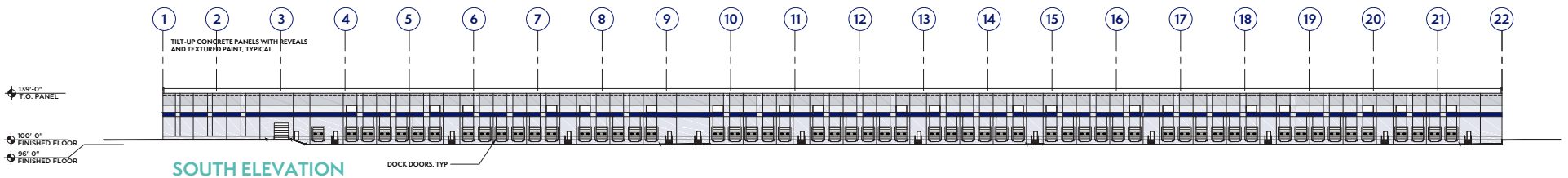
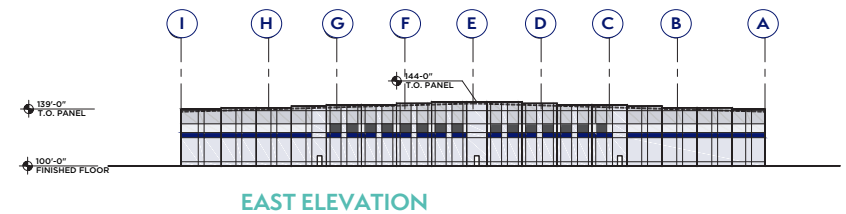
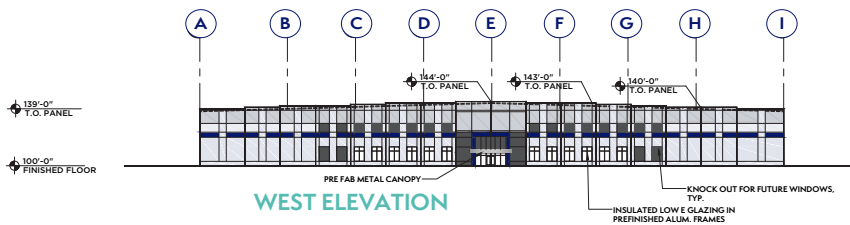
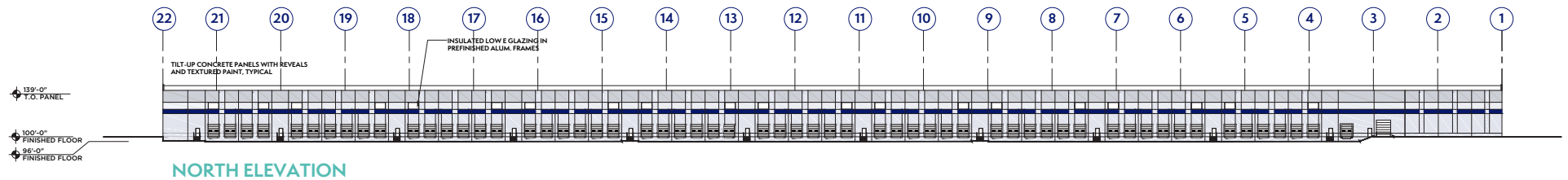


FLOOR PLAN



1 PROPOSED FLOOR PLAN
A1 SCALE: 1" = 40'-0"

BUILDING ELEVATION





OXFORD LOGISTICS CENTER



FOR MORE INFORMATION:

ED JAROSZ

617-863-8529
Ed.Jarosz@nmrk.com

TYLER MCGRAIL

617-863-8511
Tyler.Mcgrail@nmrk.com

RICK SCHUHWERK

617-863-8533
Rick.Schuhwerk@nmrk.com

MICHAEL MALINCONICO

617-863-8428
Michael.Malinconico@nmrk.com

The information contained herein has been obtained from sources deemed reliable but has not been verified and no guarantee, warranty or representation, either express or implied, is made with respect to such information. Terms of sale or lease and availability are subject to change or withdrawal without notice.

NEWMARK