

FOR LEASE | RETAIL | 232 E. CROSSTIMBERS ST.



PROPERTY DESCRIPTION

Retail center space open floor plan includes office and bathroom.

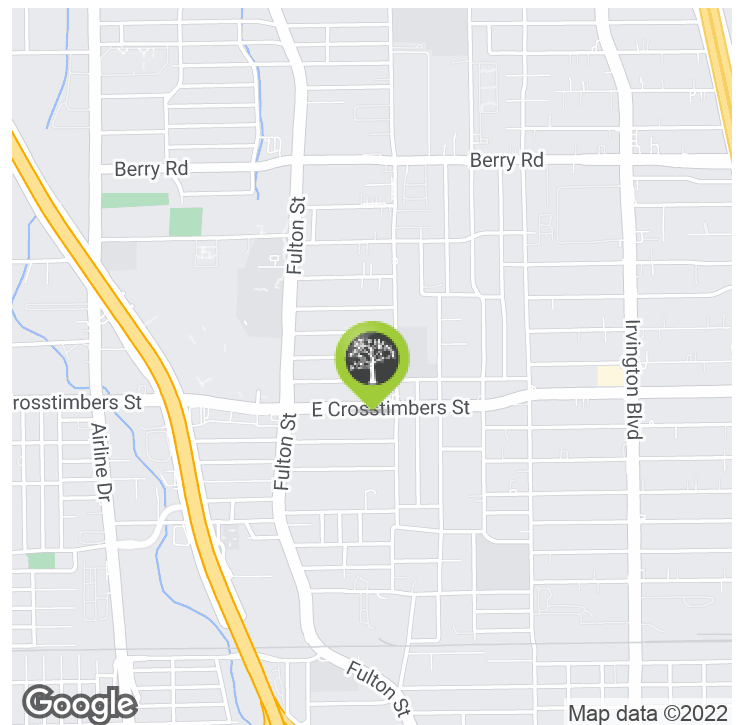
LOCATION DESCRIPTION

Located East of I-45 and North of the 610 Frwy

PROPERTY HIGHLIGHTS

SPACES	LEASE RATE	SPACE SIZE
232 A	\$1,700 per month	1,600 SF

DEMOGRAPHICS	1 MILE	2 MILES	3 MILES
Total Households	5,253	20,857	46,148
Total Population	17,100	65,340	141,536
Average HH Income	\$39,053	\$42,778	\$50,168



STEVEN T. BLOOMER

713.789.2200 x121

sbloomer@landparkco.com

2550 Gray Falls Drive, Suite 400 • Houston, TX 77077 • 713.789.2200 • landparkco.com

The information contained herein is believed to be correct. However, no warranty or representation is made. All prices are subject to change without notice and property is subject to prior lease, sale or withdrawal from the market without notice.

FOR LEASE | RETAIL | 232 E. CROSSTIMBERS ST.



LANDPARK
COMMERCIAL



STEVEN T. BLOOMER
713.789.2200 x121
sbloomer@landparkco.com

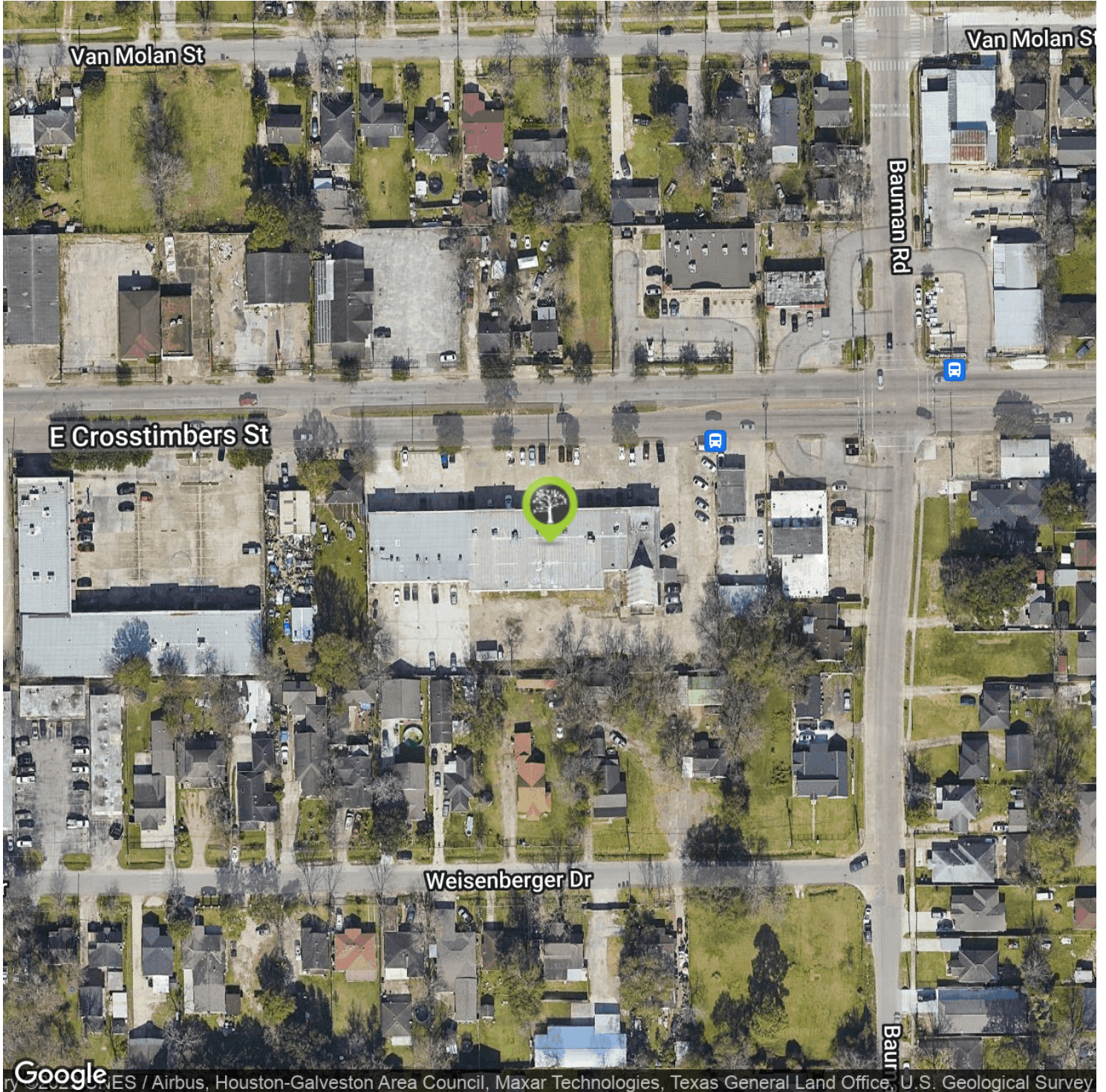
2550 Gray Falls Drive, Suite 400 • Houston, TX 77077 • 713.789.2200 • landparkco.com

The information contained herein is believed to be correct. However, no warranty or representation is made. All prices are subject to change without notice and property is subject to prior lease, sale or withdrawal from the market without notice.

FOR LEASE | RETAIL | 232 E. CROSTIMBERS ST.



LANDPARK
COMMERCIAL



Google

ES / Airbus, Houston-Galveston Area Council, Maxar Technologies, Texas General Land Office, U.S. Geological Survey

STEVEN T. BLOOMER

713.789.2200 x121

sbloomer@landparkco.com

2550 Gray Falls Drive, Suite 400 • Houston, TX 77077 • 713.789.2200 • landparkco.com

The information contained herein is believed to be correct. However, no warranty or representation is made. All prices are subject to change without notice and property is subject to prior lease, sale or withdrawal from the market without notice.