

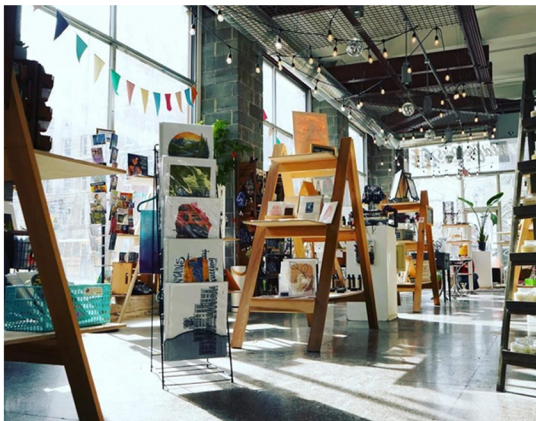
**NOW
AVAILABLE:**

McCarthy Building Retail,
217 S. Salina St. Syracuse, NY 13202
100% Retail Corner, Downtown Syracuse. Flexible sizing.

Market Overview:



Prominant Location one block from all three major neighborhoods, Hanover Square, Armory Square, Clinton Square in the heart of Downtown Syracuse.



WILDFLOWERS ARMORY
1st Floor EST 2018
30+ ARTISAN RETAIL



MCCARTHY MERCANTILE
Lower Level EST 2020
15 SHOPS/SERVICES



AVAILABLE NOW
1st Floor - NEW SPACE!
JOIN THE COMMUNITY

CONTACT: Michaeljohn@washingtonstpartners.com | 315-546-4919