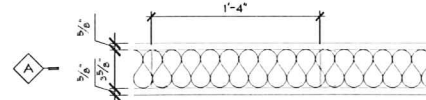


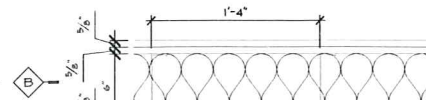
WALL TYPES

*ALL INTERIOR WALLS TO BE TYPE 'A' UNLESS NOTED OTHERWISE

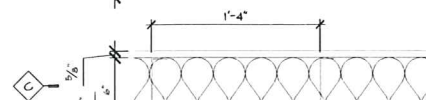
FULL HEIGHT 3 1/2" STEEL STUD WITH FULL HEIGHT BATT INSULATION AND 5/8" GYPSUM BOARD EACH SIDE



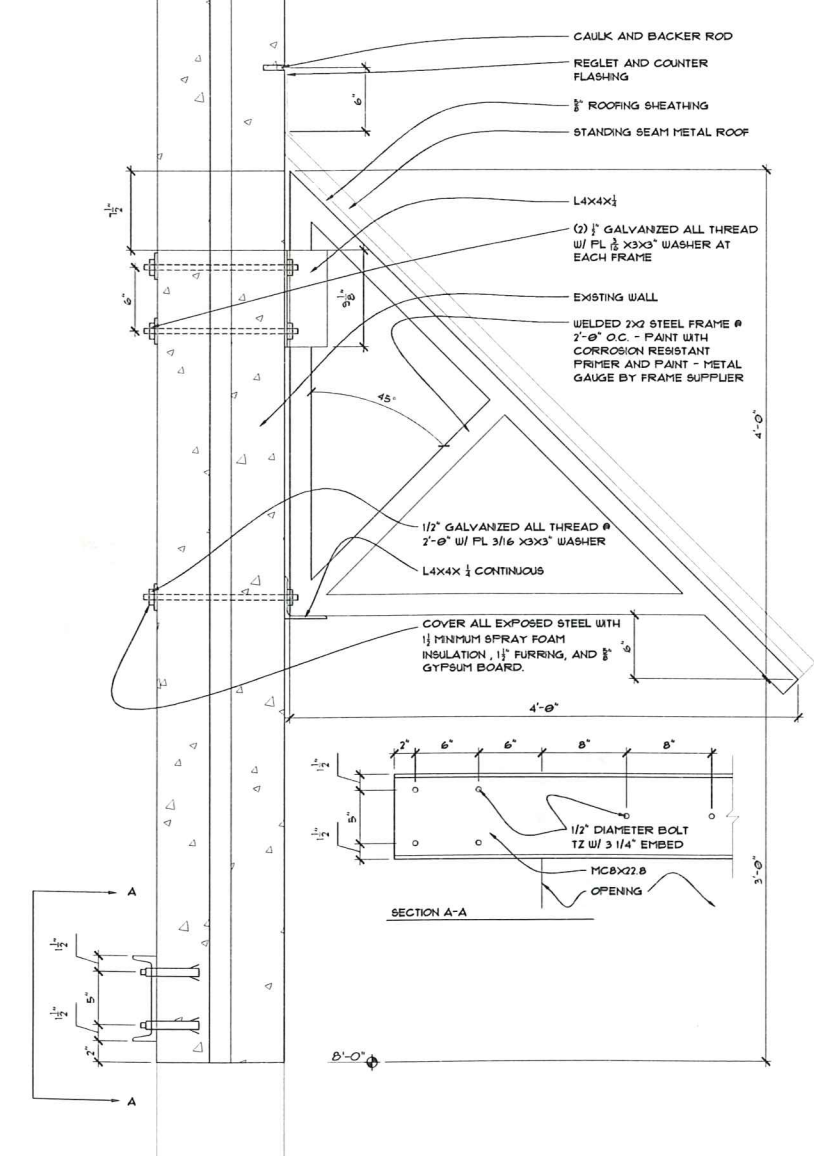
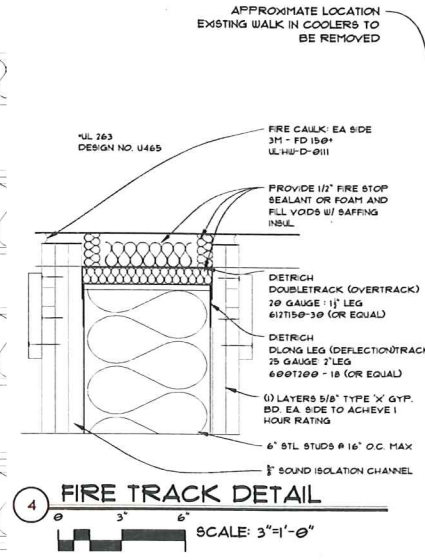
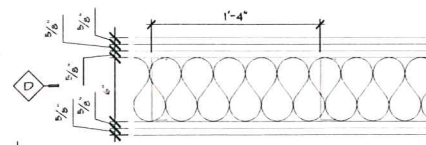
6" STEEL STUD WITH FULL HEIGHT BATT INSULATION, 5/8" SOUND ISOLATION CHANNEL AND 5/8" GYPSUM BOARD EACH SIDE



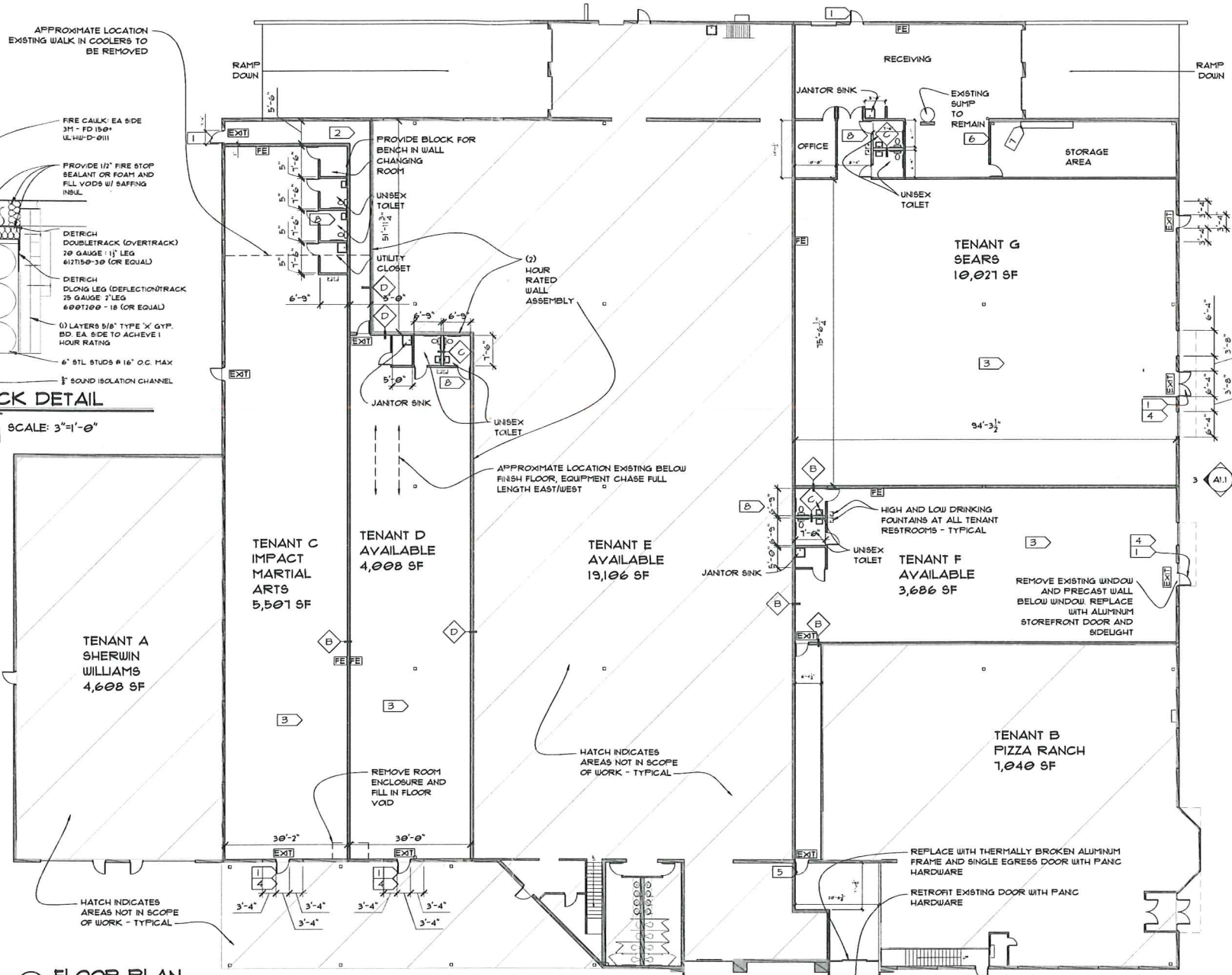
6" STEEL STUD WITH FULL HEIGHT BATT INSULATION AND 5/8" GYPSUM BOARD EACH SIDE



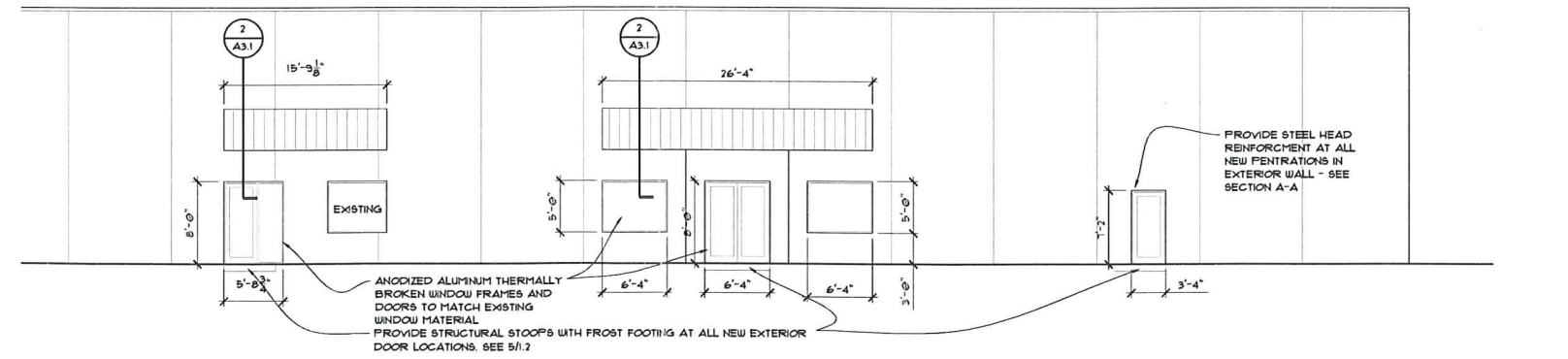
(2-HR FIRE WALL) 6" STEEL STUD WITH FULL HEIGHT BATT INSULATION, 5/8" SOUND ISOLATION CHANNEL AND (2) LAYERS 5/8" GYPSUM BOARD EACH SIDE. PROVIDE DEEP LEG CHANNEL CONNECTION OF TOP OF WALL CONNECTION TO DECK. SEE DETAIL 411.



2 SECTION SCALE: 1/2"=1'-0"



1 FLOOR PLAN SCALE: 1/16"=1'-0"



3 EXTERIOR ELEVATION SCALE: 1/4"=1'-0"

LANGEMEIER
ARCHITECTURE

107 E CHERRY STREET
P.O. BOX 21 23
N WAKARUSA, MN 56002
PH: (507) 380-6033
WWW.LANGEMEIERARCHITECTS.COM

IN ASSOCIATION WITH

Bright Pixel Design

IN ASSOCIATION WITH

GP Engineering
Structural & Investigative

PROJECT TITLE:
**CASH WISE BUILDING
AUSTIN, MN 55912**

- KEYED NOTES:**
- 1 VERIFY EXTERIOR GRADE PRIOR TO DEMOLITION OF WALL FOR NEW DOOR, WITH FINISH FLOOR ELEVATION.
 - 2 VERIFY WITH MECHANICAL DEMOLITION OF UNIT. GENERAL CONTRACTOR TO FILL-IN HOLE IN FLOOR W/ CONCRETE.
 - 3 INTERIOR FINISH SELECTION, DOORS, FRAMES, AND HARDWARE BY OTHER.
 - 4 PROVIDE STRUCTURAL STOOPS WITH FROST FOOTING AT ALL NEW EXTERIOR DOOR LOCATIONS. SEE 5/1.2
 - 5 REMOVE CONCRETE BLOCK TO ALLOW FOR INSTALLATION OF 3'x7'4" HOLLOW METAL FRAME AND 3'x7'4" H1M EXIT DOOR AND HARDWARE. TOOTH NEW CMU AROUND PERIMETER OF OPENING. USE 8" BOND BEAM HEADER WITH 8" BEARING AT BOTH ENDS. SEE 4/1.2
 - 6 COORDINATE NEW WALL LOCATION WITH EXISTING ROOF DRAINS
 - 7 ELECTRICAL EQUIPMENT TO REMAIN
 - 8 REMOVAL OF CONCRETE SLAB FOR NEW PLUMBING NOT SHOWN. PLUMBING CONTRACTOR TO VERIFY.
- DRAWINGS REVIEWED FOR LIFE-SAFETY AND DESIGN INTENT. CONTACT DESIGN TEAM WITH QUESTIONS.

I HEREBY CERTIFY THAT THIS PLAN, SPECIFICATION, OR REPORT WAS PREPARED BY ME OR UNDER MY DIRECT SUPERVISION AND THAT I AM A DULY LICENSED ARCHITECT UNDER THE LAWS OF THE STATE OF MINNESOTA.

ARCHITECT: Ryan J. Langemeier
REGISTRATION NUMBER: 26556
SIGNATURE: *Ryan J. Langemeier*
DATE: 11-26-14

I HEREBY CERTIFY THAT THIS PLAN, SPECIFICATION, OR REPORT WAS PREPARED BY ME OR UNDER MY DIRECT SUPERVISION AND THAT I AM A DULY LICENSED ENGINEER UNDER THE LAWS OF THE STATE OF MINNESOTA.

ENGINEER: Greg Priddy
REGISTRATION NUMBER: 49547
SIGNATURE: *Greg Priddy*
DATE: 11-26-14

COMM. NO.: 14.32.02
DATE: 11-24-14
DRAWN BY: MTB
CHECKED BY: MTB

DRAWING TITLE:
FIRST LEVEL FLOOR PLAN