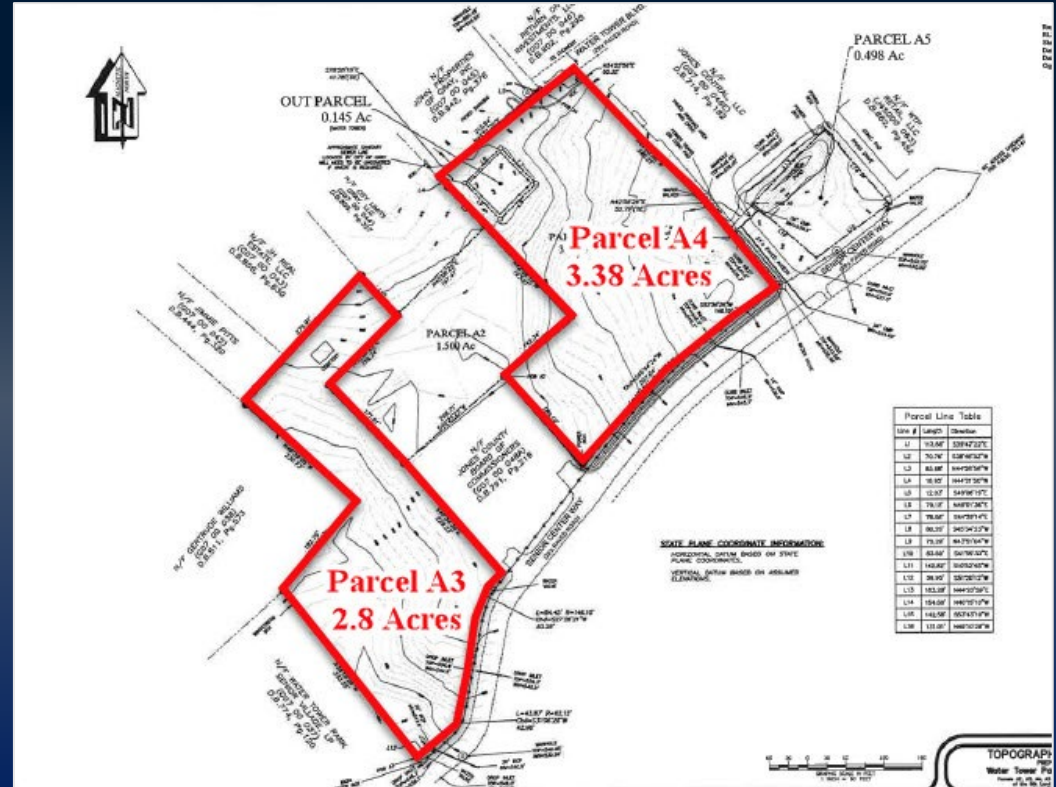


LAND FOR SALE

WATER TOWER PARK BLVD
(TWO PARCELS)
GRAY, GEORGIA 31032
JONES COUNTY

SALES PRICE
\$125,000 PER ACRE

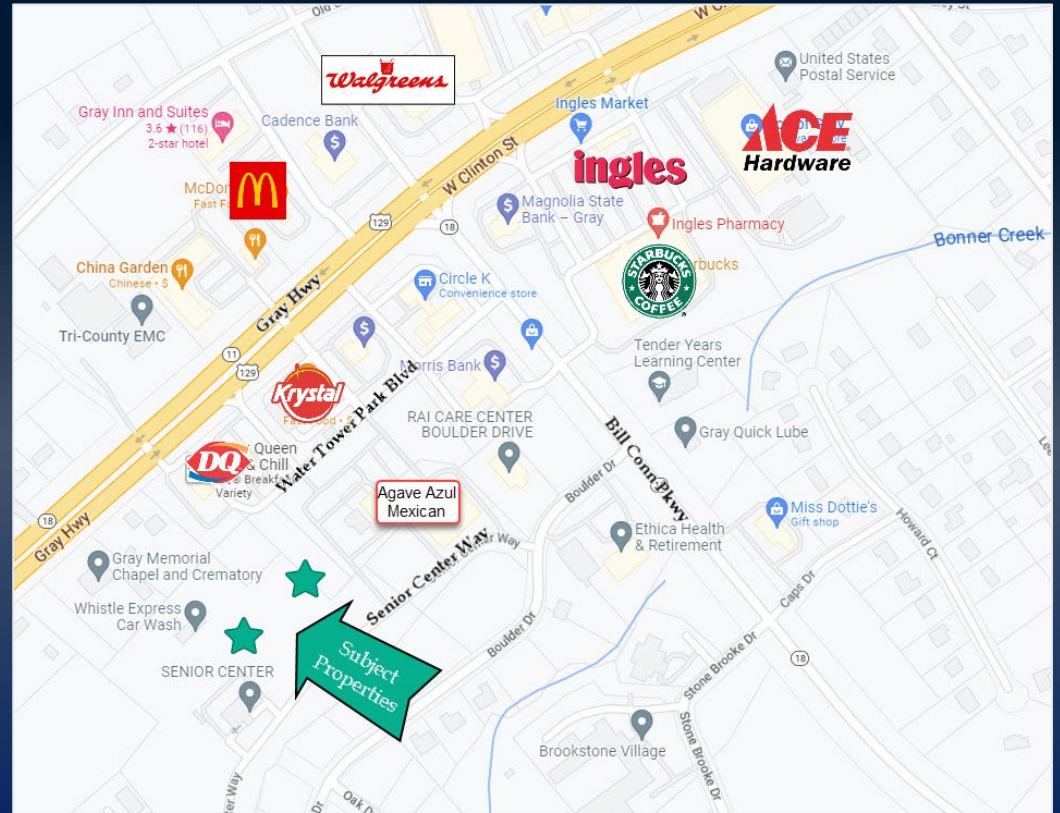


ADAM BAILEY C: 478.733.7961
ABAILEY@THESUMMITGROUPMACON.COM
4124 ARKWRIGHT ROAD, SUITE 1 MACON, GA 31210
O: 478.750.7507
WWW.THESUMMITGROUPMACON.COM



PROPERTY INFORMATION

- Two (2) parcels
 - Parcel 1 (A3) – 2.8 Acres
 - Parcel 2 (A4) – 3.38 Acres
- Great location between Water Tower Park Boulevard and Senior Center Way
- Conveniently located to Ingles Market, Ace Hardware, Gray Highway & more
- All utilities to site



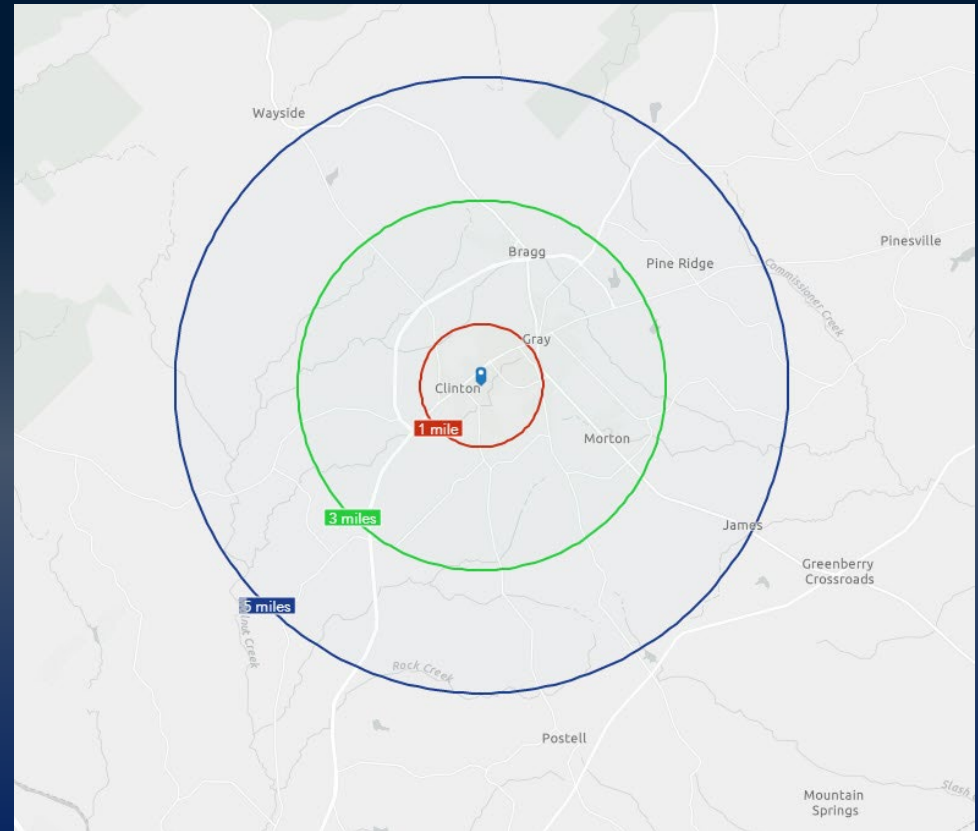
WATER TOWER PARK BLVD PARCELS GRAY, GA 31032



ADDITIONAL INFO

Demographics

	<u>1 Mile</u>	<u>3 Miles</u>	<u>5 Miles</u>
2022 Population:	2,493	8,096	11,757
2027 Population Estimate:	2,650	8,271	11,859
2022 Households:	1,011	2,961	4,377
2027 Households Estimate:	1,080	3,042	4,437
2022 Average HH Income:	\$85,748	\$80,593	\$80,664
2027 Average HH Income Estimate:	\$99,298	\$93,652	\$94,526



WATER TOWER PARK BLVD PARCELS GRAY, GA 31032

