

FOR LEASE

BELL TOWER OFFICES
2627 WEST FLORIDA AVENUE
HEMET, CA

JANET F. KRAMER, JD, CCIM
951.600.8634 x702
janetk@svn.com
CalDRE #01351570

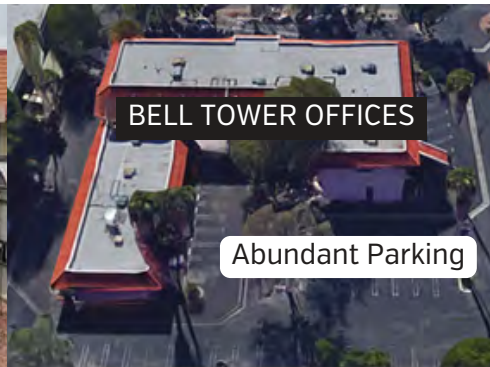
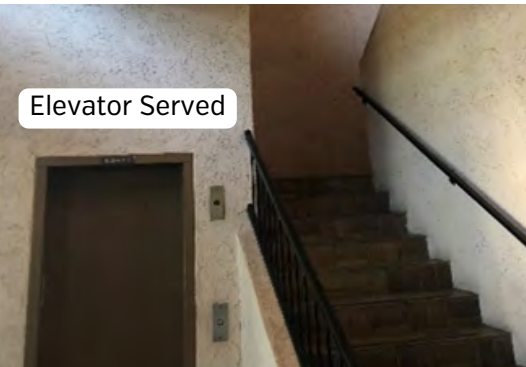
JOHN GOGA
951.551.0793
john.goga@svn.com
CalDRE #01156272

GABRIELA DEVINE
951.600.8634 x706
gabriela.devine@svn.com
CalDRE #02046396

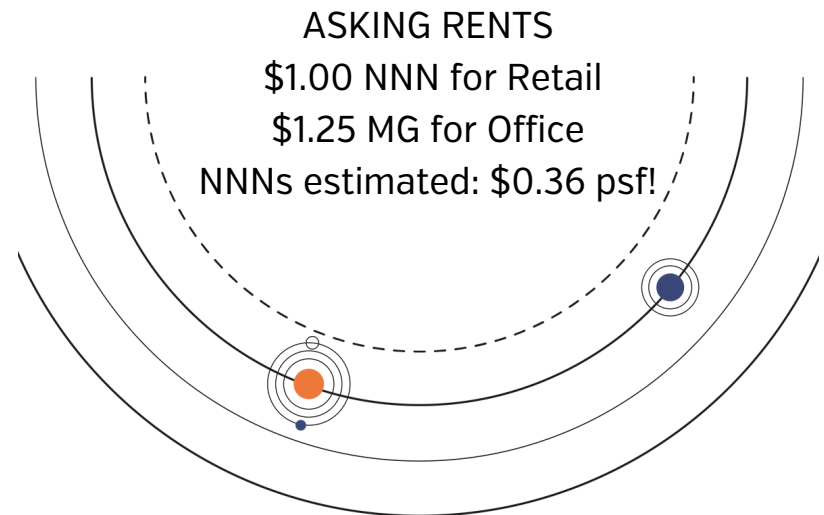


PROPERTY SUMMARY

BELL TOWER OFFICES | 2627 WEST FLORIDA AVENUE | HEMET, CA



TENANT ROSTER		
SUITE	TENANT	SF
100/101	BEAUTY SCHOOL	±9,896
102	VACANT	±1,377
107/108	VACANT	±1,728
109	ABBA BAIL BONDS	±866
200	VACANT	±2,653
202	REALTOR	±882
203	MOTOR REGISTRATION	±496
204	OFFICE	±490
205	REALTOR	±473
206	SPORTS MEMORABILIA	±408
207/208	VACANT	±2,017

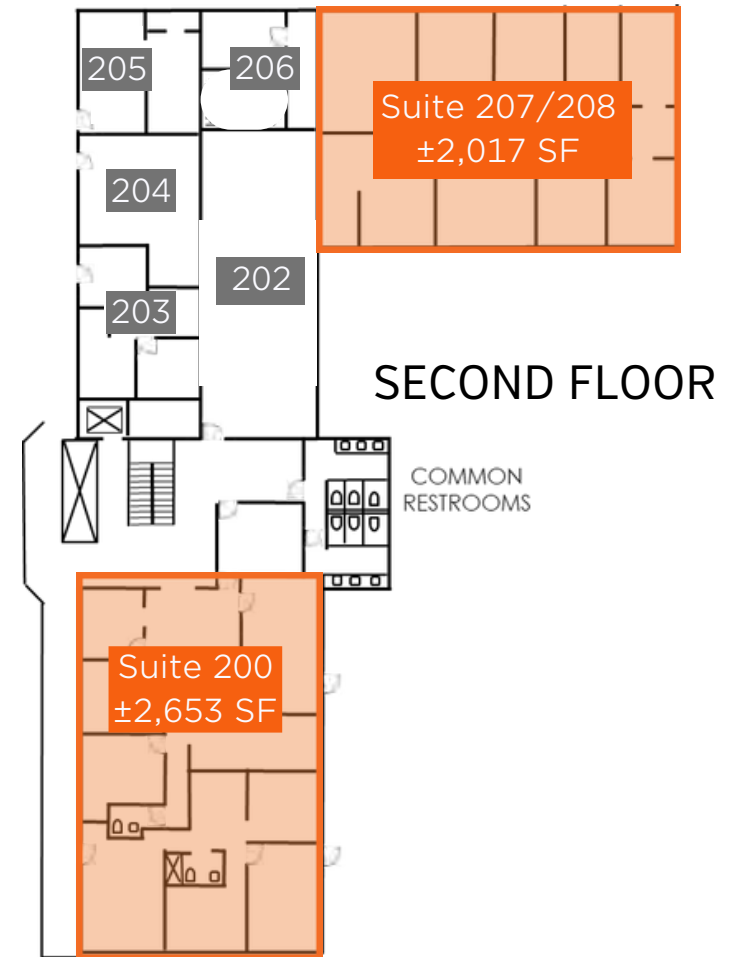


JANET F. KRAMER, JD, CCIM
 951.600.8634 x702
 janetk@svn.com
 CaIDRE #01351570

JOHN GOGA
 C: 951.551.0793
 john.goga@svn.com
 CaIDRE #01156272

GABRIELA DEVINE
 951.600.8634 x706
 gabriela.devine@svn.com
 CaIDRE #02046396





JANET F. KRAMER, JD, CCIM
951.600.8634 x702
janetk@svn.com
CaIDRE #01351570

JOHN GOGA
C: 951.551.0793
john.goga@svn.com
CaIDRE #01156272

GABRIELA DEVINE
951.600.8634 x706
gabriela.devine@svn.com
CaIDRE #02046396





JANET F. KRAMER, JD, CCIM
 951.600.8634 x702
 janetk@svn.com
 CalDRE #01351570

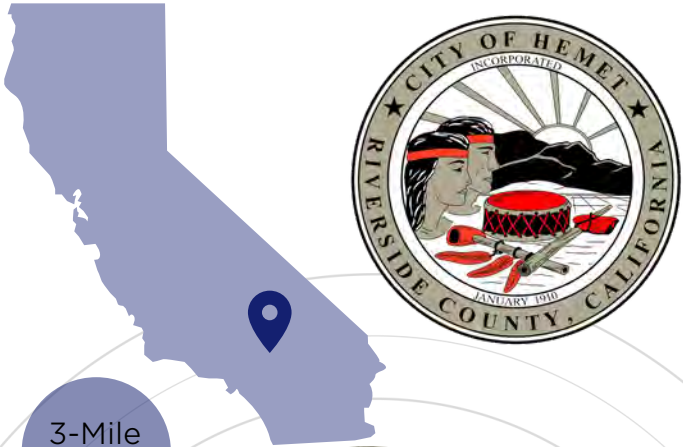
JOHN GOGA
 C: 951.551.0793
 john.goga@svn.com
 CalDRE #01156272

GABRIELA DEVINE
 951.600.8634 x706
 gabriela.devine@svn.com
 CalDRE #02046396



DEMOGRAPHICS

BELL TOWER OFFICES | 2627 WEST FLORIDA AVENUE | HEMET, CA



- State California
- County Riverside
- Mayor Joe Males
- Website hemetca.gov

POPULATION

Source: ESRI



54,980
POPULATION

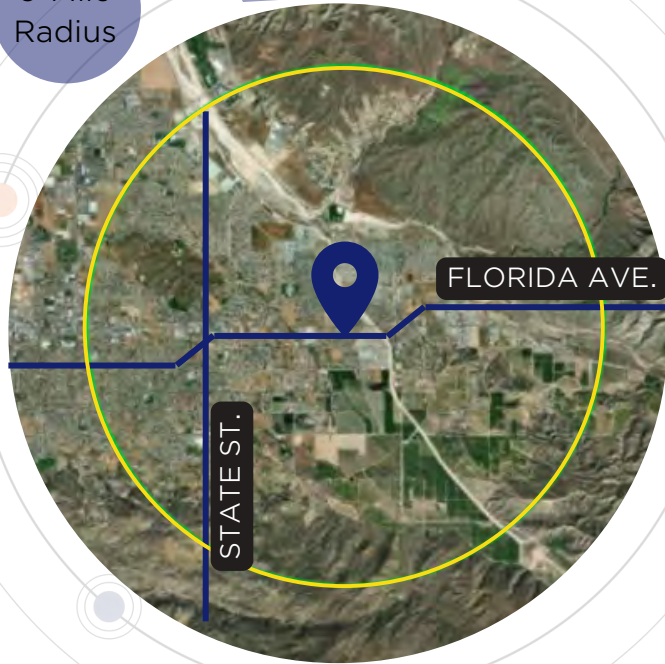


36.6
MEDIAN AGE



17,406
HOUSEHOLDS

3-Mile
Radius



EMPLOYMENT



53%
WHITE COLLAR



31%
BLUE COLLAR



21%
SERVICES



8%
UNEMPLOYMENT RATE

EDUCATION



31%
HIGH SCHOOL
GRADUATE



36%
SOME COLLEGE



16%
BACHELORS/GRAD/
PROF DEGREE

INCOME



\$63,339
MEDIAN HOUSEHOLD
INCOME



\$26,942
PER CAPITA
INCOME



\$126,797
MEDIAN NET
WORTH

JANET F. KRAMER, JD, CCIM
951.600.8634 x702
janetk@svn.com
CaDRE #01351570

JOHN GOGA
C: 951.551.0793
john.goga@svn.com
CaDRE #01156272

GABRIELA DEVINE
951.600.8634 x706
gabriela.devine@svn.com
CaDRE #02046396

