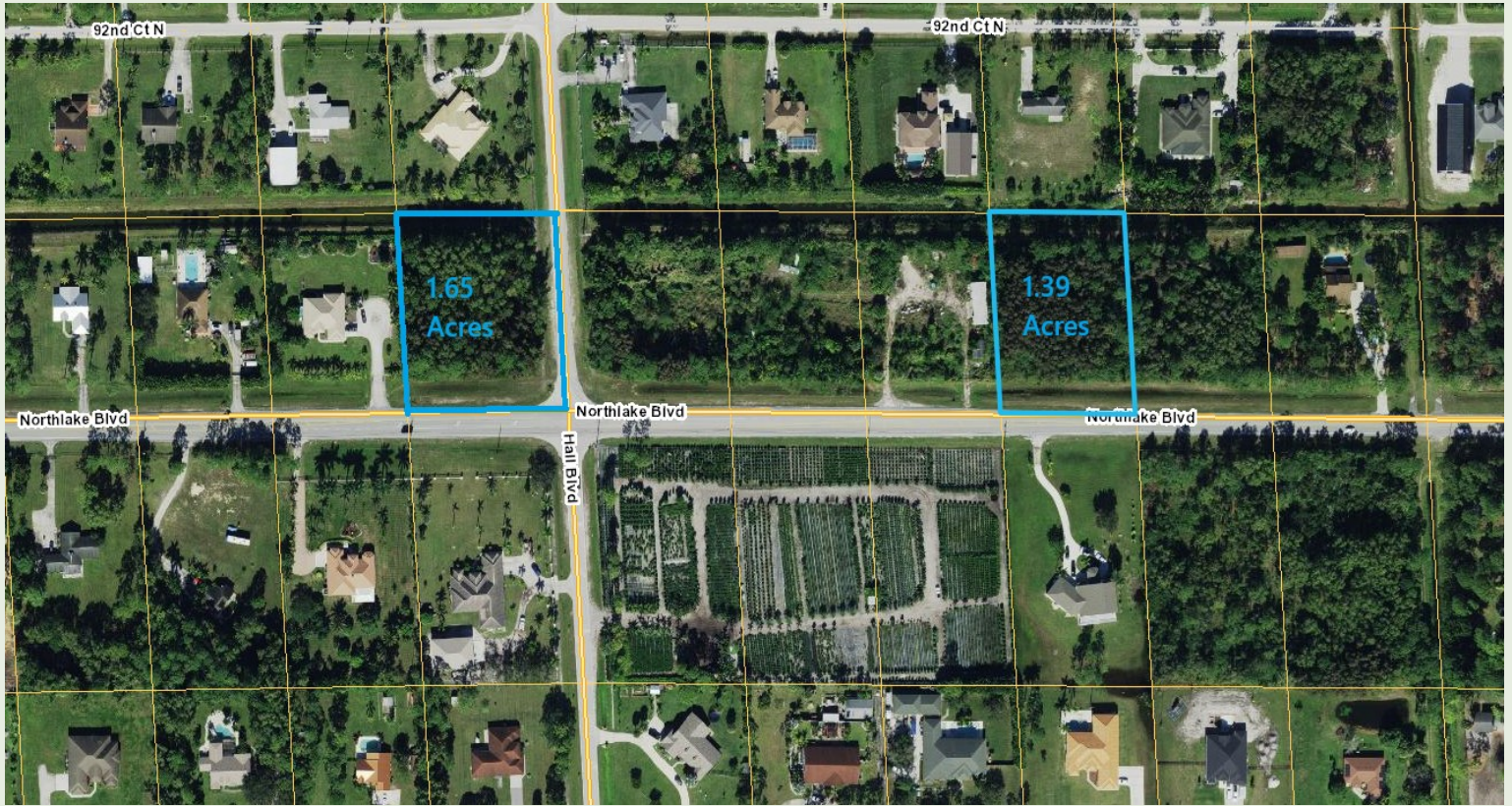


**For Sale: Two Land Parcels—Avenir/Westlake
Area Western Palm Beach County, FL
1.65 Acres - NWC of Northlake Blvd and Hall
Blvd. & 1.39 Acres Fronting Northlake Blvd.**



- **1.65 Acres at the NWC of Northlake Blvd. and Hall Blvd
With 250 Ft of frontage on Northlake Blvd**
- **1.39 Acres on the North side of Northlake Blvd with 209 Ft on Northlake Blvd**
- **Northlake Roadway Expansion to four lanes underway**
- **AR Zoned Palm Beach County with potential for Commercial Low Land Use & Annexation**
- **Traffic Count—Northlake Blvd - Beeline Hwy to Seminole Pratt Whitney: Over 45,000 Vehicles Per Day**
- **Price: \$1.2 Million for the 1.65 Acree and \$1 million for the 1.39 Acre Parcel**

FOR MORE INFORMATION CONTACT:

**CHRISTOPHER FLEMING- 561-707-5120
CFLEMING@STRATEGICREALTY.COM**

**STRATEGIC REALTY SERVICES, LLC
500 NORTHPOINT PARKWAY, SUITE 300
WEST PALM BEACH, FL. 33407
PH. 561-471-5353 FAX 561-471-5355
WWW.STRATEGICREALTY.COM**

**For Sale: Two Land Parcels—Avenir/Westlake
Area Western Palm Beach County, FL**

**1.65 Acres - NWC of Northlake Blvd and Hall
Blvd. & 1.39 Acres Fronting Northlake Blvd.**

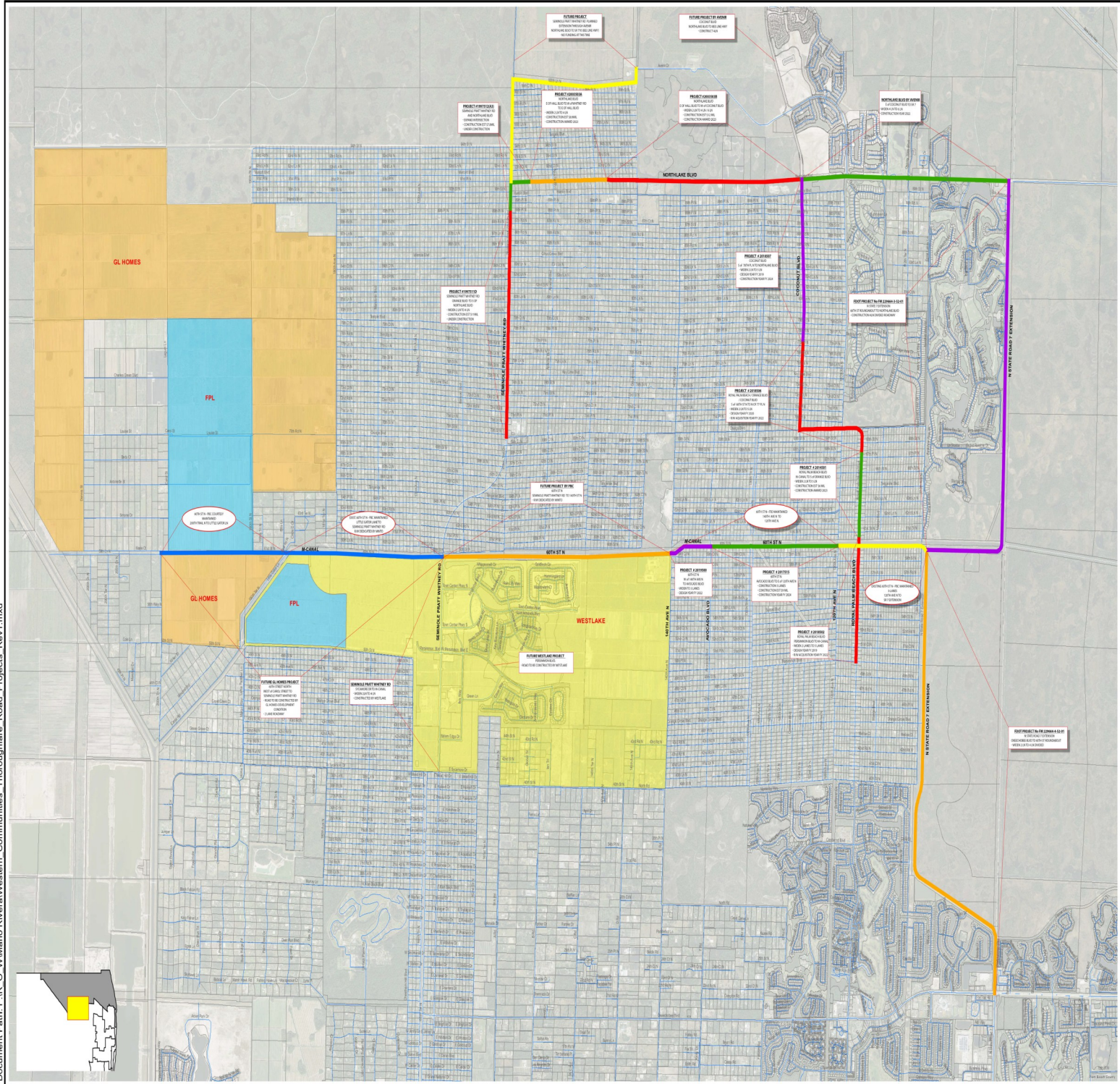


Links to articles on the Northlake Blvd Corridor

- <https://sustainablepbc.org/news/massive-developments-transform-northlake>
- <https://avenirpbg.com/how-palm-beach-gardens-is-growing-aldi-shops-restaurants-coming-to-coconut-crossing/>
- <https://www.pbgfl.gov/650/Projects-Under-Construction>
- <https://www.palmbeachpost.com/story/news/local/pbgardens/2025/11/04/publix-restaurants-retail-shops-rise-at-avenir-in-palm-beach-gardens/86822342007/>
- <https://konoversouth.com/properties/coconut-crossing/>

For Sale: Two Land Parcels—Avenir/Westlake Area Western Palm Beach County, FL

1.65 Acres - NWC of Northlake Blvd and Hall Blvd. & 1.39 Acres Fronting Northlake Blvd.



Document Path: F:\R_O_W\Mario Rivera\Western Communities Thoroughfare Road Projects Rev1.mxd

WESTERN COMMUNITIES THOROUGHFARE ROAD PROJECTS

