

FOR LEASE
FORMER BANK BRANCH
2293 W SAND LAKE RD. ORLANDO, FL 32809



One story corner Building located on W Sand Lake Rd in Orlando Central Industrial Park. Excellent Visibility and Daily Traffic. Parking on site. Building signage. Drive-Thru. Entry/Exit from W Sand Lake Rd and Chancellor Dr.

- 29 Parking Spaces
- Close to Restaurants and Shopping Centers
- Just few miles from Florida Mall
- Accessible to Florida's Turnpike, I-4, and SR 52
- W Sand Lake Rd - AADT: 41,500

PROPERTY HIGHLIGHTS

TOTAL SIZE:
1.60 Acres

BUILDING SIZE:
8,793 SQFT - Gross
6,465 SQFT - Living

ZONING:
Financial / Industrial Zoned

COUNTY:
Orange County

PRICE:
\$26.5 x SQFT - NNN

AERIAL

Chancellor Dr

**BUILDING SIZE
6,465 SQ FT**

W Sand Lake Rd



C

64

101.98

601

318

76.92

267.74

96.101

100

410

408.62

505.95

00065

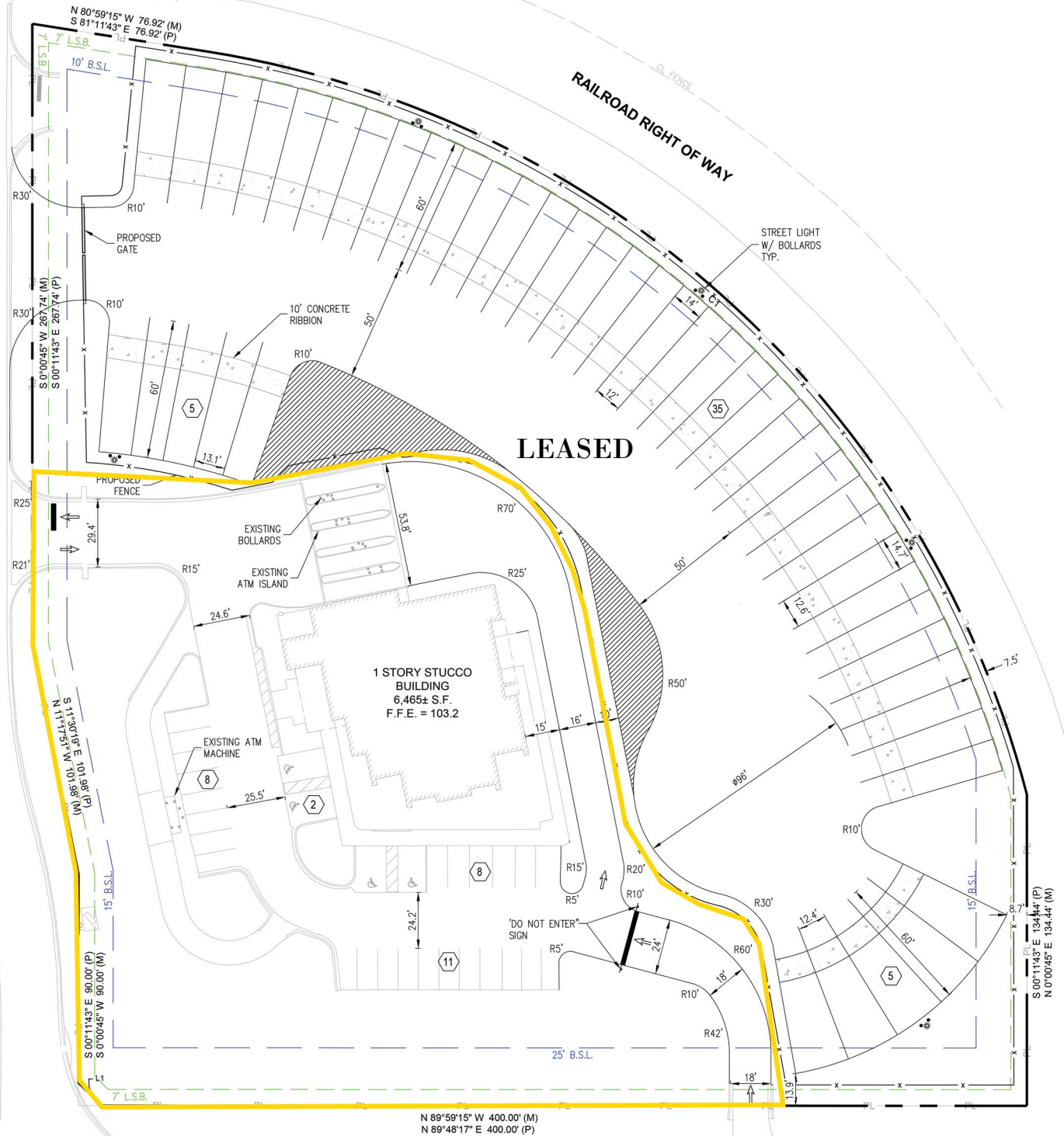
134.44

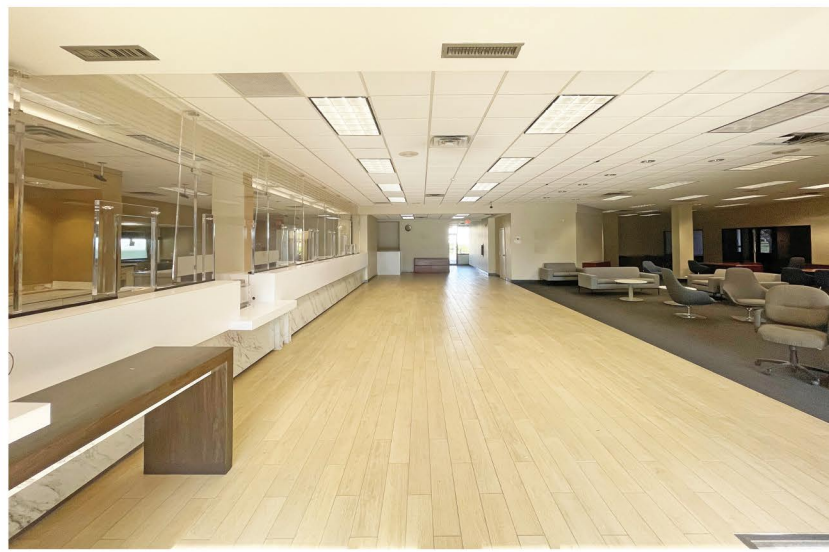
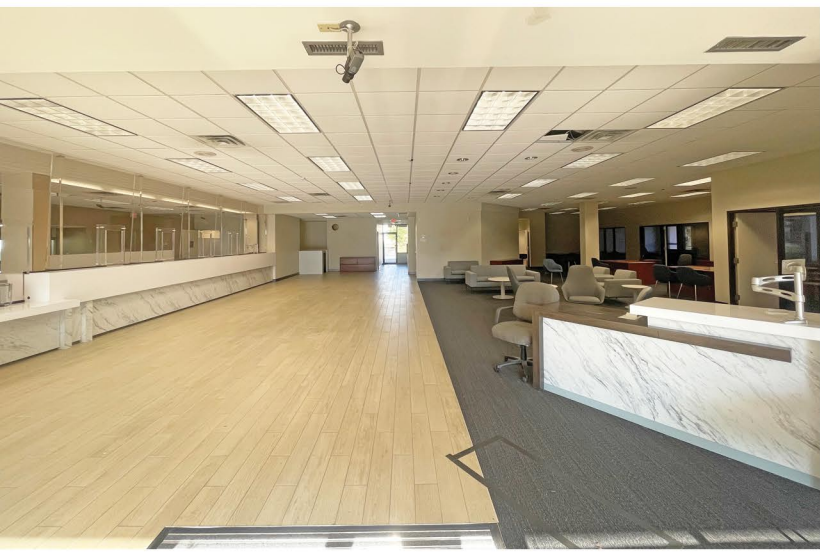
482

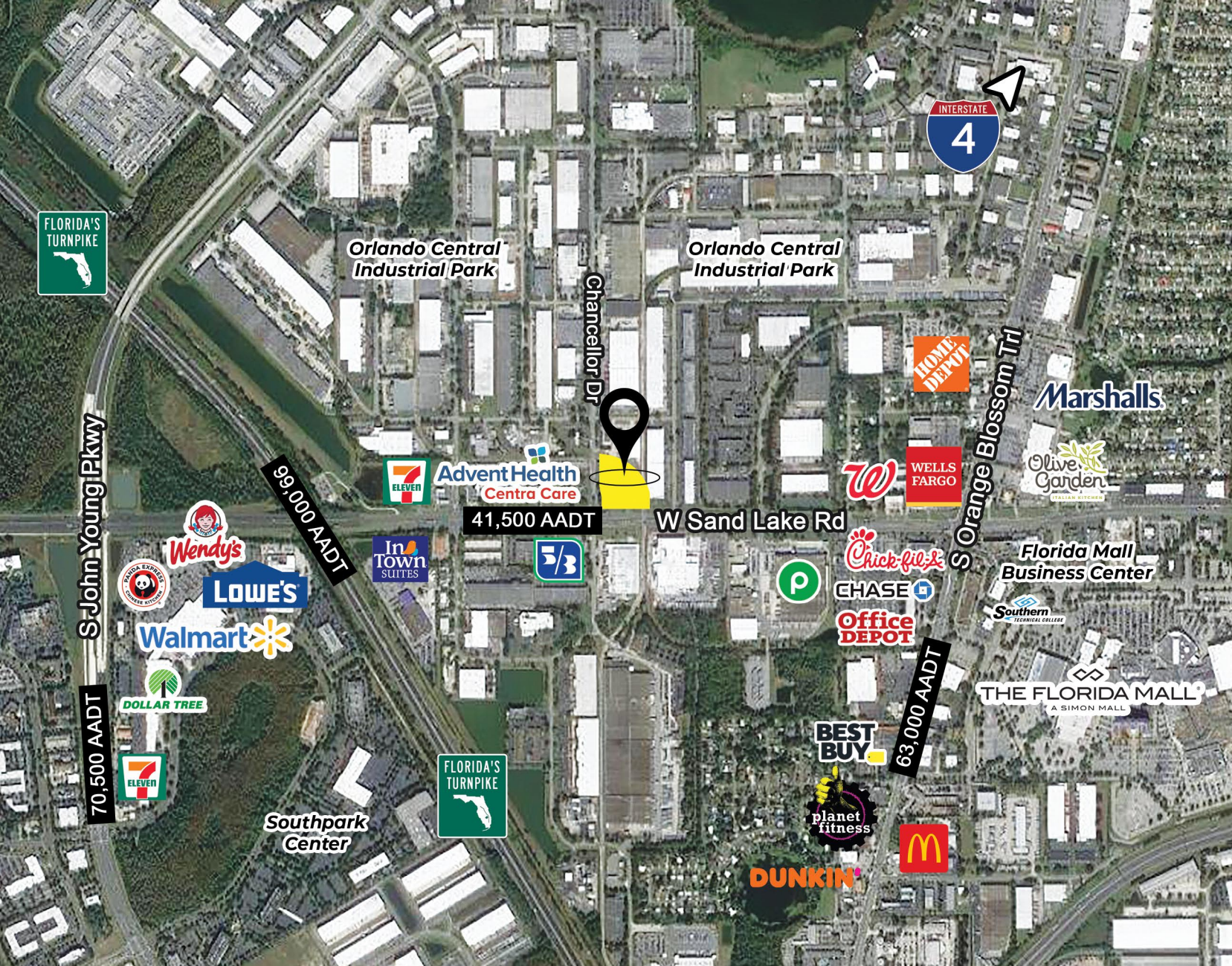
482

857.67

CHANCELLOR DRIVE
VARIABLE WIDTH PUBLIC RIGHT OF WAY
ASPHALT PAVEMENT
PREVIOUSLY DEDICATED IN OR BOOK 1837 PAGE 718







BOBBY LUTHRA

Licensed Real Estate Associate

407-468-0099

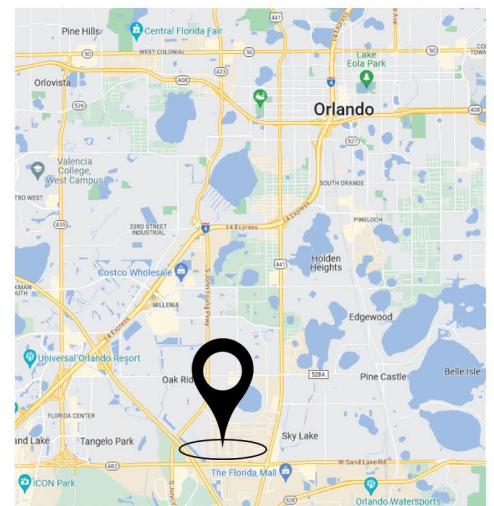
bobluthra@pibland.com

OFFICE LOCATION:

27 N Summerlin Ave
Orlando, FL 32801

CONTACT US:

Phone: 407-649-9888
Fax: 407-649-7222



This document has been prepared by Property Investment Brokers for advertising and general information only. No warranty or representation, express or implied, is made as to the accuracy of the information contained herein, and same is submitted subject to errors, omissions, change of price, rental or other conditions, withdrawal without notice, and to any special listing conditions imposed by our principals.

