

1717 RHODE ISLAND AVENUE, NW

Washington, DC 20036

Office For Lease

1,166 - 15,131 SF



Leasing Information:
202.513.6700

Merrill Turnbull
202.513.6713
mturnbull@lpc.com

Adam Biberaj
202.513.6736
abiberaj@lpc.com

Tim Whitebread
202.513.6712
twhitebread@lpc.com

Lincoln

Lincoln Property Company
101 Constitution Avenue, NW Suite 325 East
Washington, DC 20001

www.lpc.com

1717 RHODE ISLAND AVENUE, NW

Washington, DC 20036



Property Highlights

- Full Amenity Renovation Completed! Brand New Lobby, Fitness Center, and Conference Center now open!
- Newly constructed spec suites and full floors available!
- VAV HVAC system
- Tenant-only fitness center & new ground-floor conference center
- On-site parking with 1/1,500 SF
- Immediate access to Connecticut Ave. retail amenities
- Metro access at Farragut North, Farragut West and Dupont Circle

Availabilities

Suite 620
Suite 630
Suite 640
Suite 650
Suite 800

SF

1,166 SF
3,865 SF
4,077 SF
2,710 SF
15,131 SF

Date Available

Immediately
Immediately
Immediately
Immediately
Immediately

Merrill Turnbull

202.513.6713
mturnbull@lpc.com

Adam Biberaj

202.513.6736
abiberaj@lpc.com

Tim Whitebread

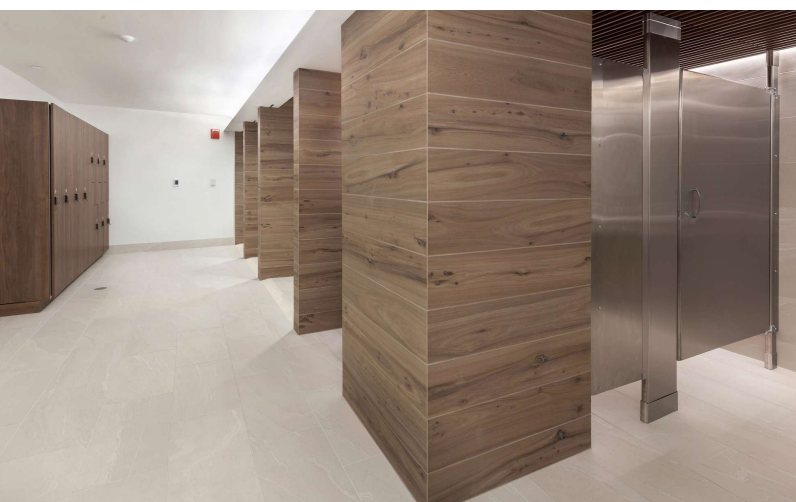
202.513.6712
twhitebread@lpc.com

Lincoln

1717 RHODE ISLAND AVENUE, NW

Washington, DC 20036

Newly Delivered Renovations



Merrill Turnbull **Adam Biberaj** **Tim Whitebread**
202.513.6713 202.513.6736 202.513.6712
mturnbull@lpc.com abiberaj@lpc.com twhitebread@lpc.com

Lincoln

1717 RHODE ISLAND AVENUE, NW

8th Floor

Washington, DC 20036



Suite	Size	Description
■ Suite 800	15,131 SF	Full floor available Immediately.

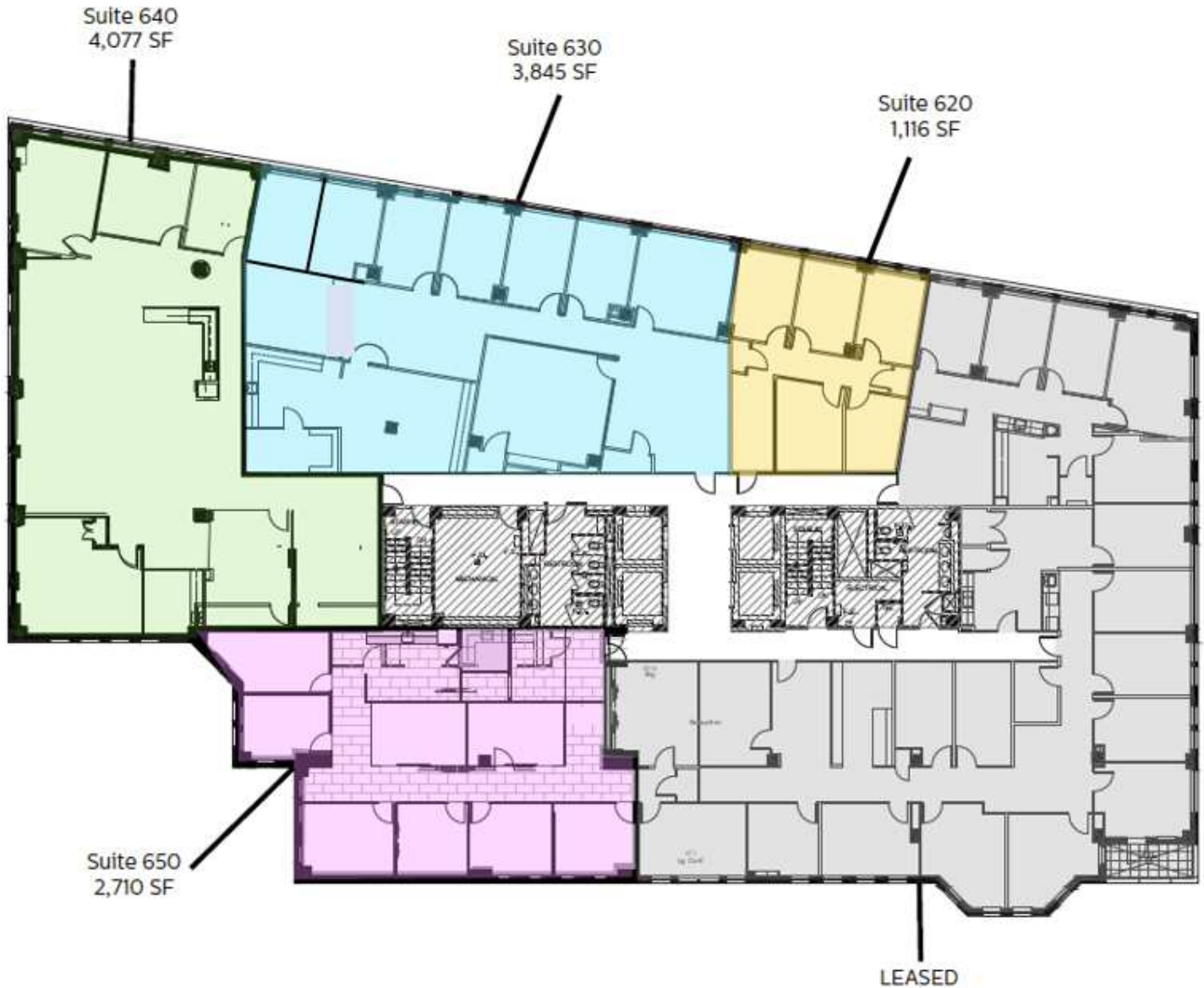
Merrill Turnbull **Adam Biberaj** **Tim Whitebread**
202.513.6713 202.513.6736 202.513.6712
mturnbull@lpc.com abiberaj@lpc.com twhitebread@lpc.com

Lincoln

1717 RHODE ISLAND AVENUE, NW

6th Floor

Washington, DC 20036



Suite	Size	Lease Rate	Description
Suite 620	1,166 SF	Negotiable	Available Immediately
Suite 630	3,865 SF	Negotiable	Available Immediately
Suite 640	4,077 SF	Negotiable	Available Immediately
Suite 650	2,710 SF	Negotiable	Available Immediately

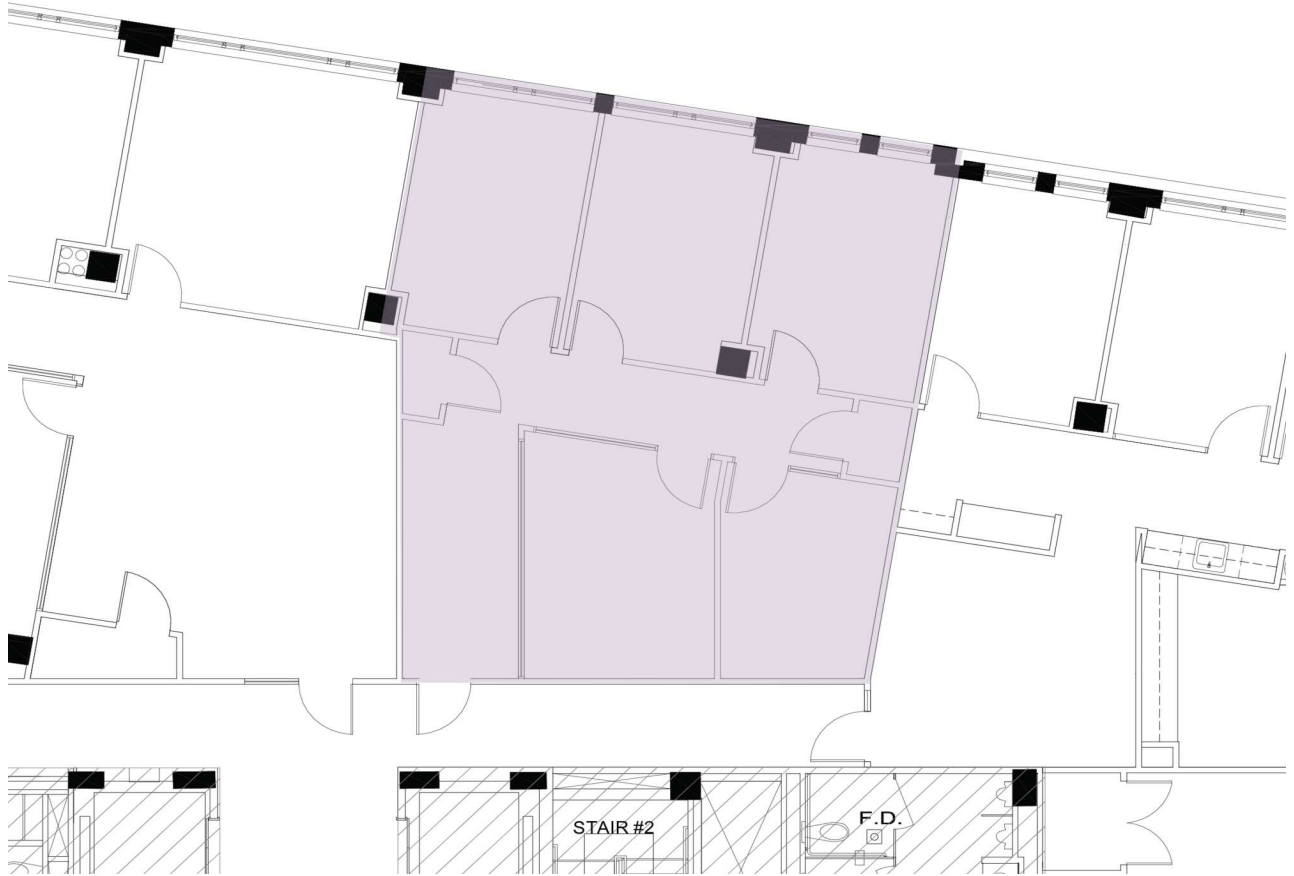
Merrill Turnbull **Adam Biberaj** **Tim Whitebread**
202.513.6713 202.513.6736 202.513.6712
mturnbull@lpc.com abiberaj@lpc.com twhitebread@lpc.com

Lincoln

1717 RHODE ISLAND AVENUE, NW

Suite 620

Washington, DC 20036



Suite	Size	Description	View Matterport
■ Suite 620	1,166 SF	Available Immediately	View Here

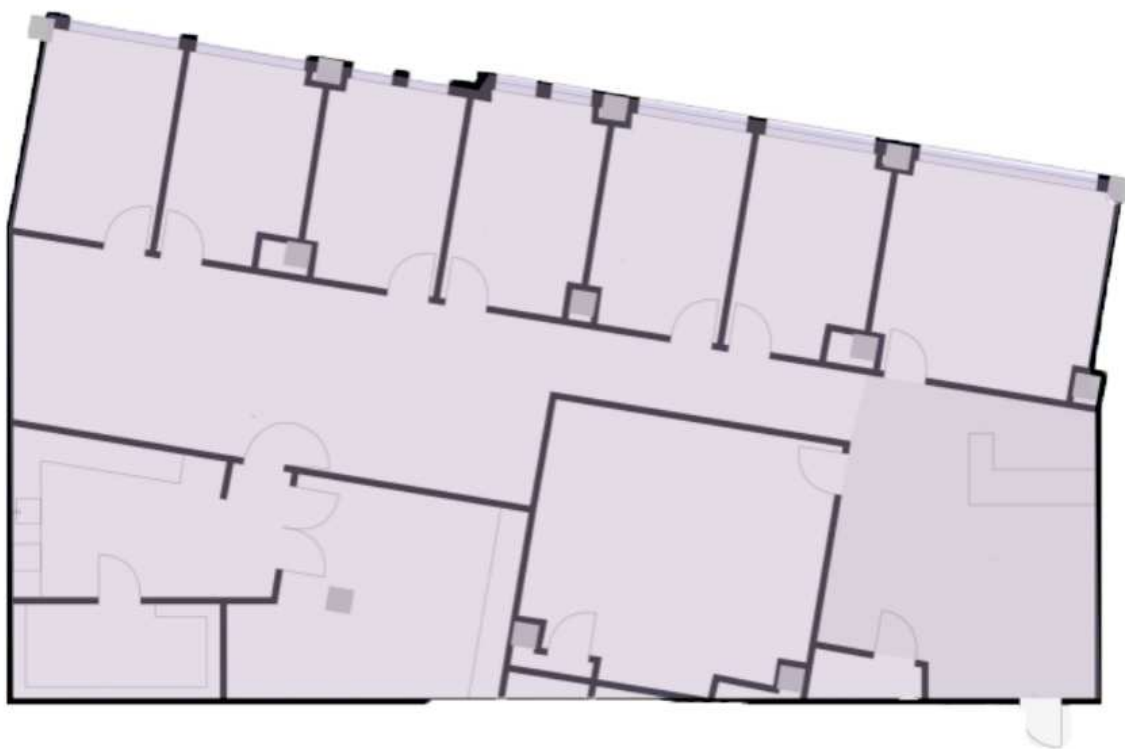
Merrill Turnbull **Adam Biberaj** **Tim Whitebread**
202.513.6713 202.513.6736 202.513.6712
mturnbull@lpc.com abiberaj@lpc.com twhitebread@lpc.com

Lincoln

1717 RHODE ISLAND AVENUE, NW

Suite 630

Washington, DC 20036



Suite	Size	Description
Suite 630	3,865 SF	Available Immediately

Merrill Turnbull **Adam Biberaj** **Tim Whitebread**
202.513.6713 202.513.6736 202.513.6712
mturnbull@lpc.com abiberaj@lpc.com twhitebread@lpc.com

Lincoln



Suite	Size	Description	View Matterport
■ Suite 640	4,077 SF	Available Immediately	View Here

Merrill Turnbull **Adam Biberaj** **Tim Whitebread**
202.513.6713 202.513.6736 202.513.6712
mturnbull@lpc.com abiberaj@lpc.com twhitebread@lpc.com

Lincoln

1717 RHODE ISLAND AVENUE, NW

Suite 650

Washington, DC 20036



Suite	Size	Description	View Matterport
■ Suite 650	2,710 SF	Available Immediately	View Here

Merrill Turnbull 202.513.6713 mturnbull@lpc.com
Adam Biberaj 202.513.6736 abiberaj@lpc.com
Tim Whitebread 202.513.6712 twhitebread@lpc.com

Lincoln

1717 RHODE ISLAND AVENUE, NW

Nearby Amenities

Washington, DC 20036



Merrill Turnbull **Adam Biberaj** **Tim Whitebread**
202.513.6713 202.513.6736 202.513.6712
mturnbull@lpc.com abiberaj@lpc.com twhitebread@lpc.com

Lincoln



1717 RHODE ISLAND AVENUE, NW

Washington, DC 20036

Leasing Information:
202.513.6700

Merrill Turnbull
202.513.6713
mturnbull@lpc.com

Adam Biberaj
202.513.6736
abiberaj@lpc.com

Tim Whitebread
202.513.6712
twhitebread@lpc.com

Lincoln

Lincoln Property Company
101 Constitution Avenue, NW Suite 325 East
Washington, DC 20001

www.lpc.com