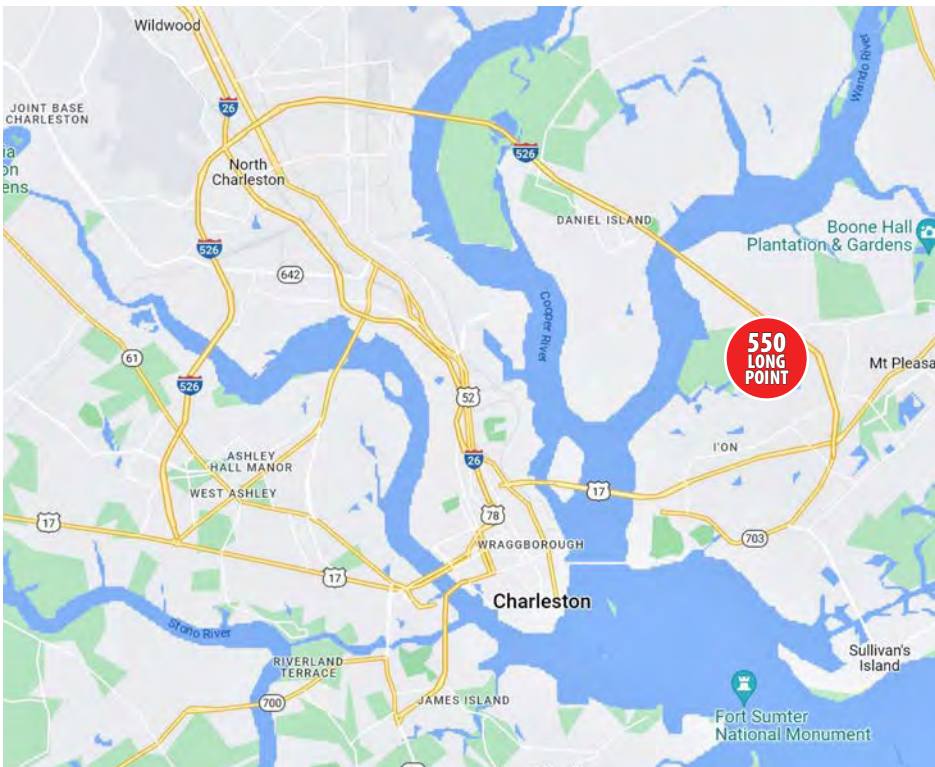


## OFFICE BUILDING FOR LEASE OR SALE

550 LONG POINT ROAD  
MOUNT PLEASANT, SC 29464



**Grace Moring**, Leasing  
843.518.6808  
gmoring@wrsrealty.com



## OFFERING SUMMARY

<b>Address</b>	550 Long Point Road Mount Pleasant, SC 29464
<b>Lease Type</b>	Modified Gross
<b>Sale Price</b>	Contact Agent
<b>Property Type</b>	Class A Office
<b>Available SF</b>	Suite 200 - 5,540 SF Suite 205 - 4,740 SF
<b>Total Building SF</b>	20,560 SF
<b>Year Built</b>	1996
<b>Zoning</b>	PD (Planned Development)
<b>Lot Size</b>	2.01 Acres
<b>**Parking</b>	112 On Site (5.5/1,000 SF)

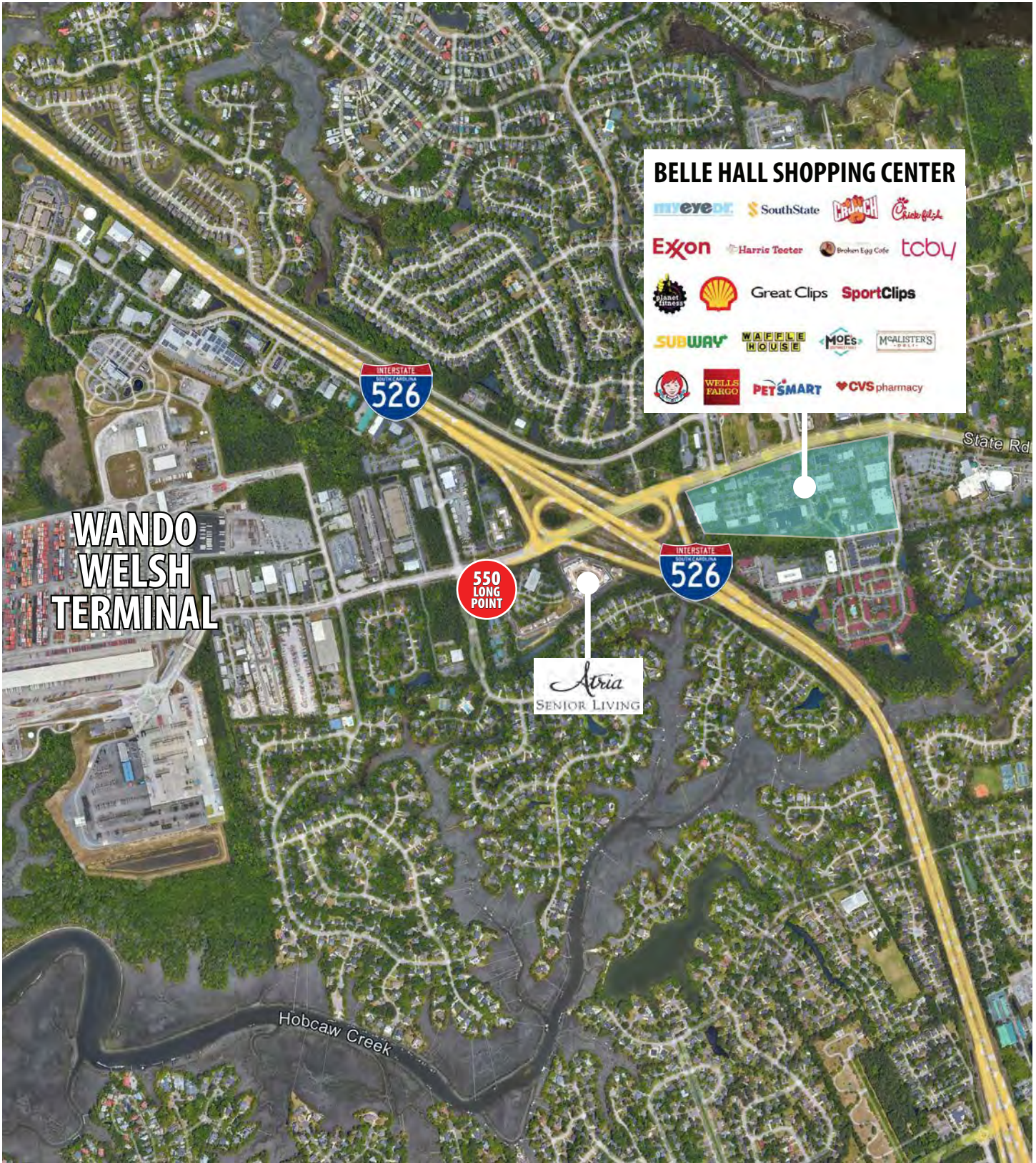
## THE PROPERTY

Class A offices available in a multi-tenant building with a mix of glass fronted offices, private offices, high ceilings and open floor plan. Building signage available. Suites can be combined for a full-floor tenant.

Building is located just off I-526 in close proximity to Highway 17 North in Mount Pleasant, approximately 5 miles to I-26. Daniel Island and the Cainho area are within a 10 - 15 minute drive. Nearby businesses and amenities include Chick-Fil-A, Planet Fitness, Crunch Fitness and Belle Hall Shopping Center including Wendy's, Starbucks, Moe's Southwest Grill and Harris Teeter.

The SC Ports Authority HQ and Wando Welch terminal are less than 2 miles away and the building is surrounded by upscale neighborhoods. Atria Assisted Living is next door, East Cooper Medical Center is 2.8 miles from the building and Roper Saint Francis is approximately 8 miles away. There are numerous medical facilities within 2 mile radius.

# LOCATION



# SECOND FLOOR - FLOOR PLAN

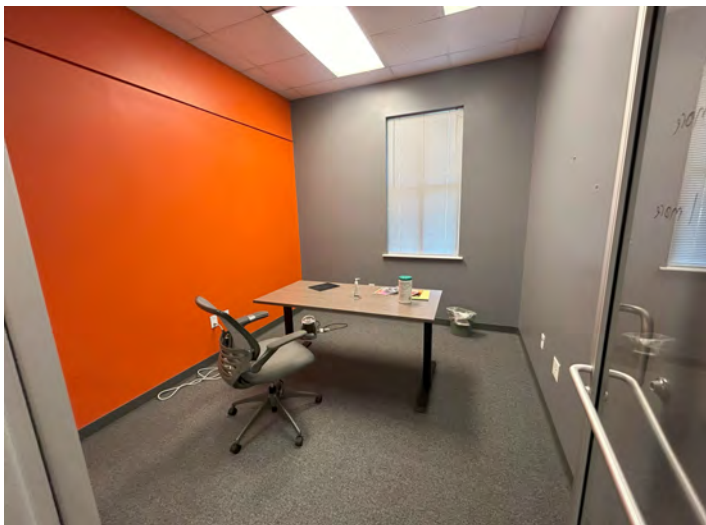
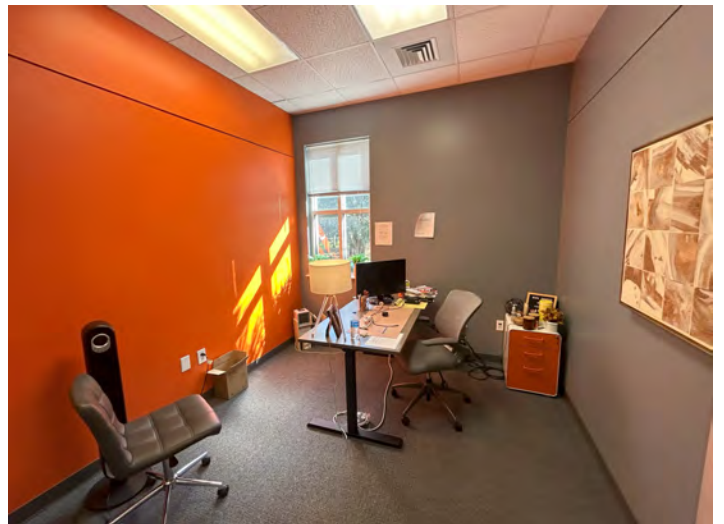


The information contained herein was obtained from sources believed reliable, however, WRS Inc. makes no guarantees, warranties, or representations as to the completeness or accuracy thereof. The presentation of this property is submitted subject to errors, omissions, change of tenants or conditions prior to sale or lease, or withdrawal without notice.  
WRS Inc. | 410 Mill Street, Bldg. 1, Suite 200 | Mount Pleasant, SC 29464 | main 843.654.7888 | fax 843.654.7889

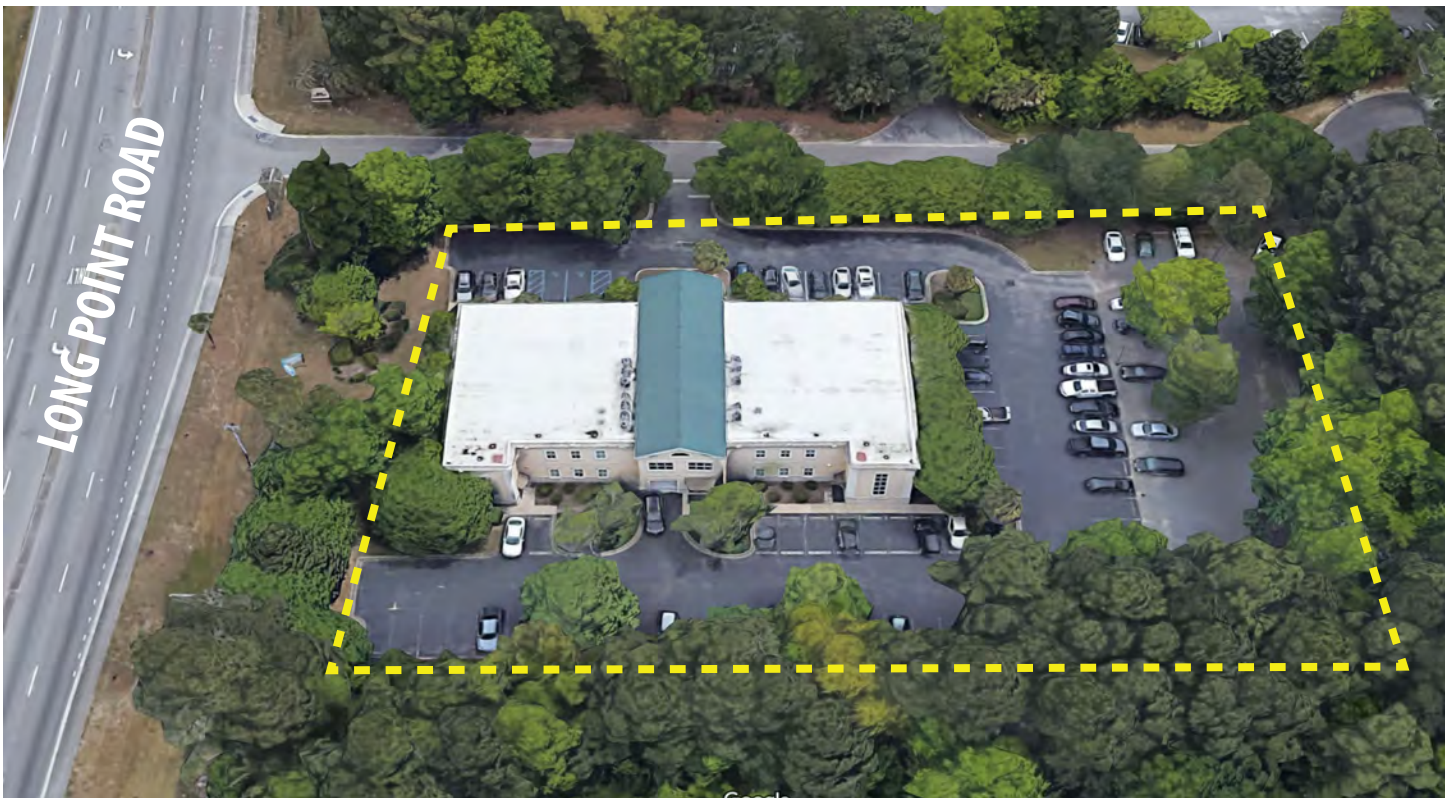
# SUITE 200 PHOTOS



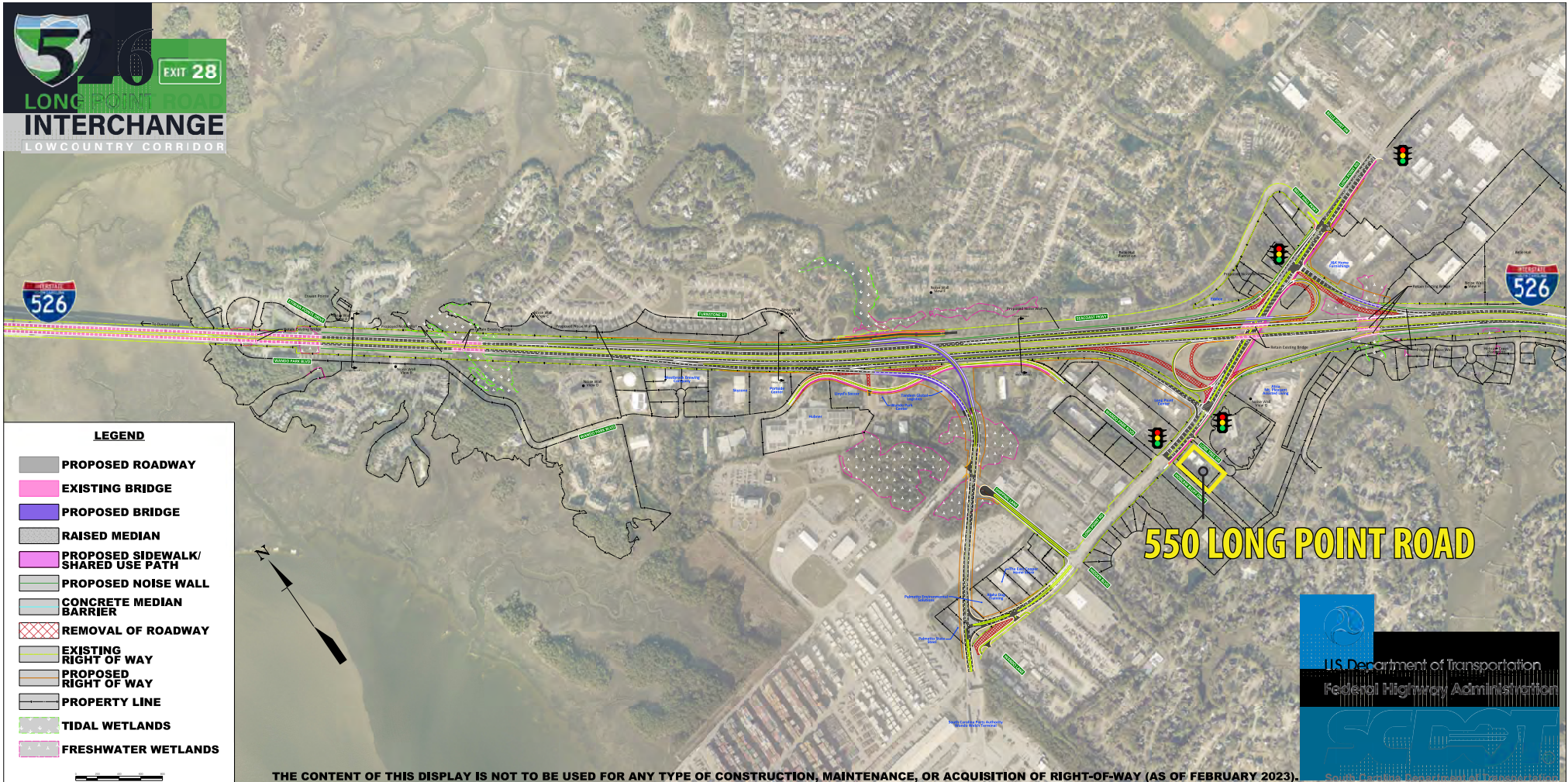
# SUITE 205 PHOTOS



# BUILDING AERIALS



# LONG POINT ROAD IMPROVEMENT PLAN





**WRS**INC  
REAL ESTATE INVESTMENTS

410 Mill Street, Bldg. 1, Suite 200  
Mount Pleasant, SC 29464  
843.654.7888 Office  
843.654.7889 Fax  
[www.wrsrealstate.com](http://www.wrsrealstate.com)