

Rosewood Office Plaza

11,213 SF of flexible office space for lease

1711 West County Road B
Roseville, MN 55113

Patrick Kyle
651-999-5529
pkyle@wellingtonmgt.com



WELLINGTON
MANAGEMENT



Ideally located office with space planning flexibility.

Rosewood Office Plaza is a three-story property located on five acres between St. Paul and Minneapolis and within three minutes of HarMar Mall and Rosedale Center. The building offers convenience and accessibility with free surface parking, a common lunch room, large windows for ample natural light and a shared conference room. The property consists of two buildings with a first-floor connector and currently houses contiguous vacancies to accommodate users of all sizes.

HIGHLIGHTS

- Common conference room and lunch room
- Updated carpeting, ceiling and lighting in common areas
- Expansive windows for abundant natural light
- Monument signage opportunity
- Shopping and dining within three minutes at HarMar Mall and Rosedale Center
- Landscaped green space with shade trees, picnic tables and an irrigation pond
- Large surface parking lot
- Quiet neighborhood

Space Available

Manager, Leasing

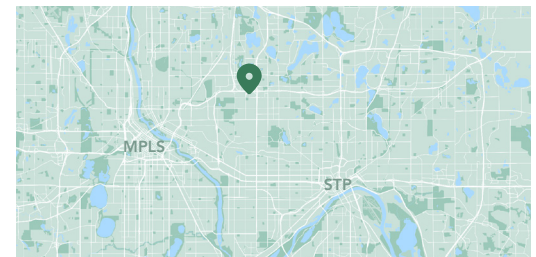
58,000 SF total; 11,213 SF available

306 surface stalls, 5.3 : 1,000 SF

Three-story office building


Built in 1984

North Metro




Available Suites




Suite 101S - 964 SF **3D Tour** 



Suite 200S - 4,219 SF **3D Tour** 



Suite 207S (virtual staging) **3D Tour** 

Available Suites



Suite 211S - 1,525 SF

3D Tour 



Suite 213S - 897 SF

3D Tour 



Suite 320N - 1,253 SF

3D Tour 

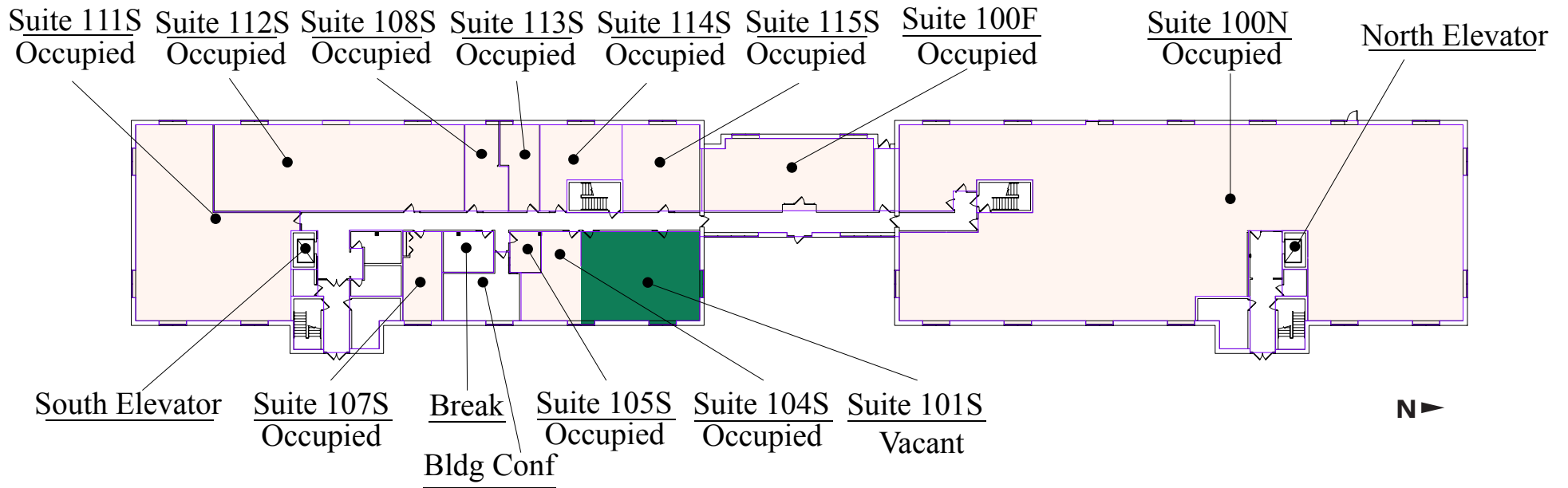


Suite 335N - 1,403 SF

3D Tour 

Floor Plan - First Floor

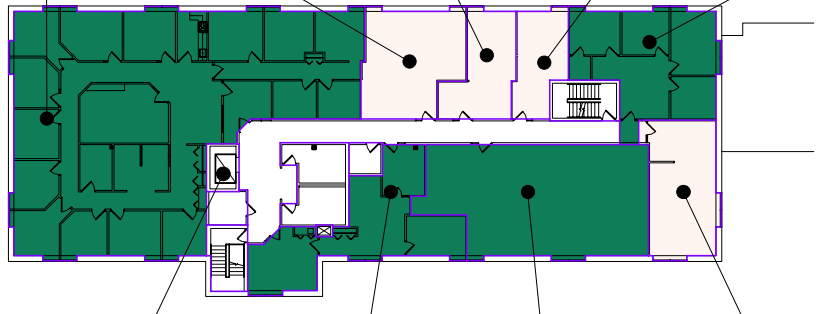
- Building Common Areas
- Available Space
- Occupied Space



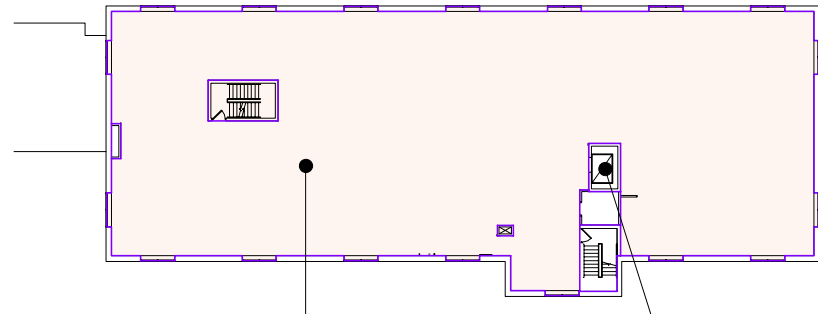
Floor Plan - Second Floor

- Building Common Areas
- Available Space
- Occupied Space

Suite 200S Suite 202S Suite 205S Suite 206S Suite 207S
Vacant Occupied Occupied Occupied Vacant



South Elevator Suite 213S Suite 211S Suite 210S
Vacant Vacant Occupied



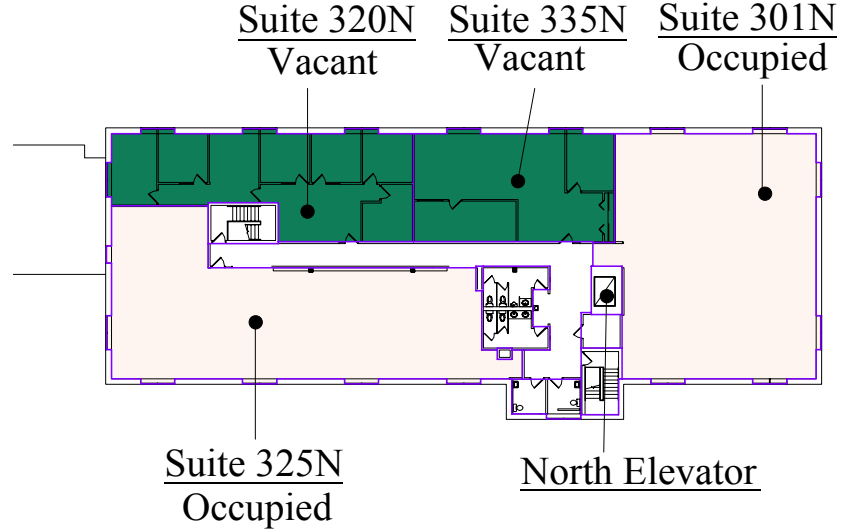
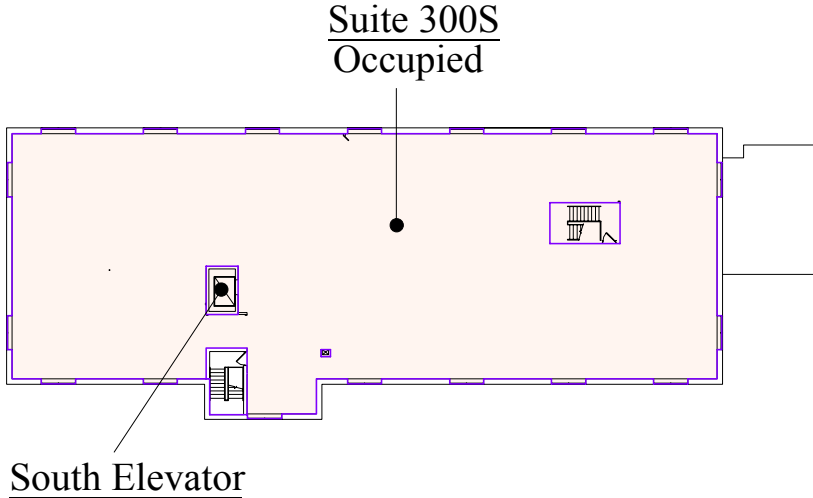
Suite 200N
Occupied

North Elevator



Floor Plan - Third Floor

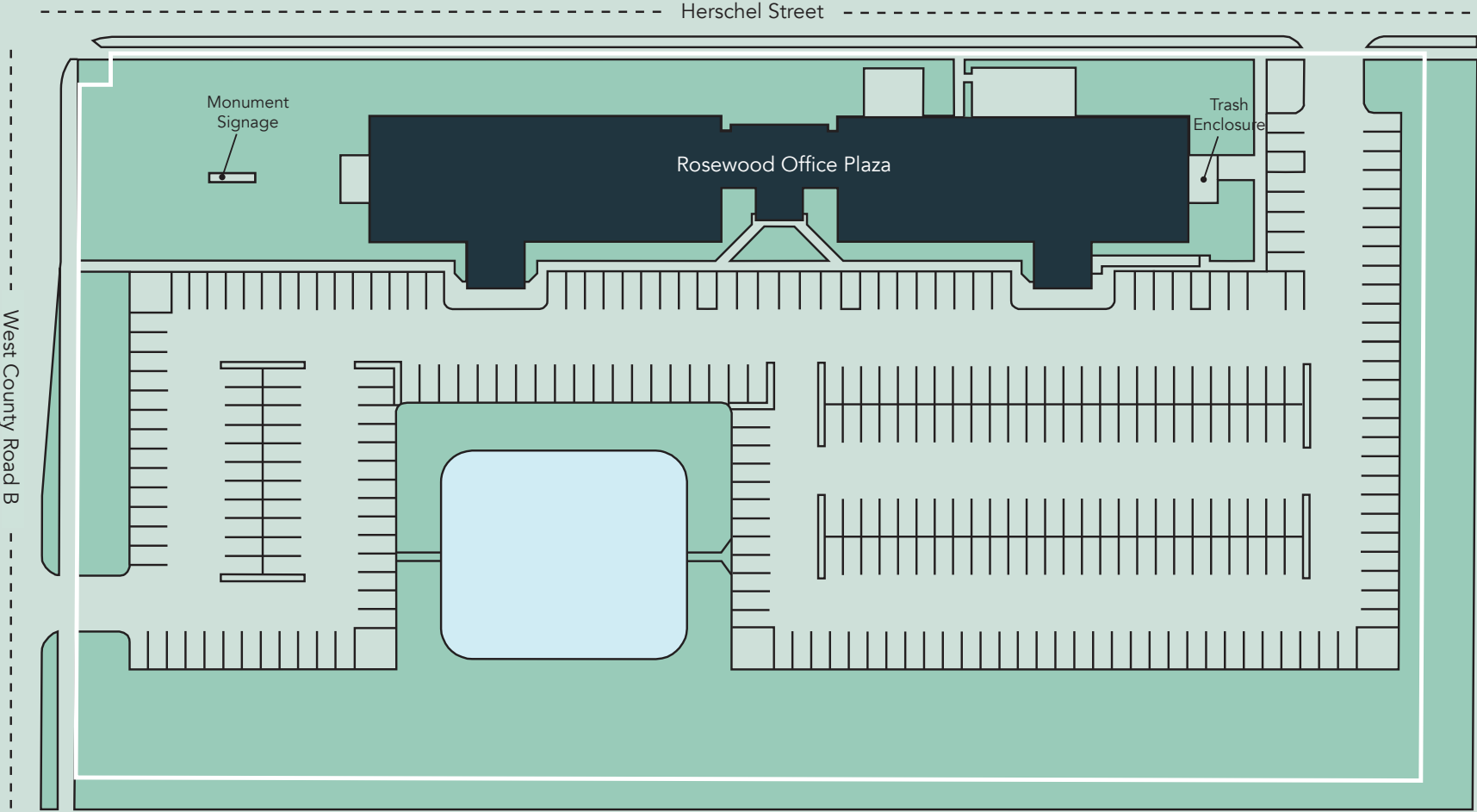
- Building Common Areas
- Available Space
- Occupied Space



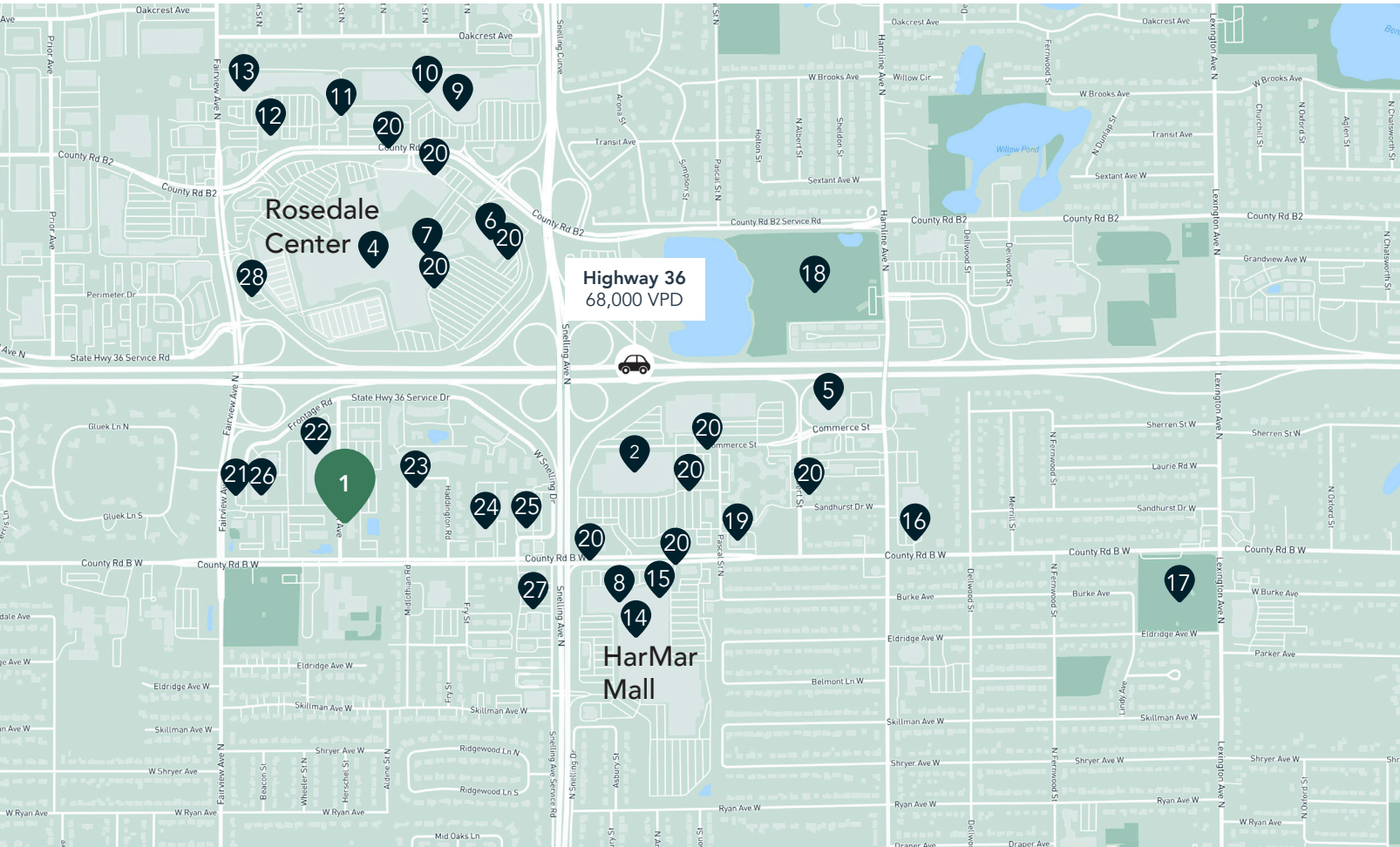
Suite 320N Vacant Suite 335N Vacant Suite 301N Occupied



Site Plan



The Neighborhood



Demographics

1 MILE AWAY

7,687 Population
3,371 Households
\$83,686 Avg. Income

3 MILES AWAY

83,435 Population
35,355 Households
\$85,330 Avg. Income

5 MILES AWAY

334,247 Population
132,176 Households
\$74,092 Avg. Income

Hot Spots

- | | | | | | |
|----------------------------|----------------------------|------------------------|-------------------------------------|-----------------------------------|------------------|
| 1. Rosewood Office Plaza | 6. Rosedale Transit Center | 11. Lucky's 13 Pub | 16. Speedway | 21. Starbucks | 26. Market Fresh |
| 2. Target, Starbucks & CVS | 7. CRAVE American Kitchen | 12. Buffalo Wild Wings | 17. Lexington Park | 22. Planet Fitness | 27. Caribou |
| 3. HarMar Mall | 8. Kyoto Sushi | 13. Bed Bath & Beyond | 18. Roseville Cedarholm Golf Course | 23. Binie Teriyaki | 28. PNC Bank |
| 4. Rosedale Center | 9. Kohl's | 14. Chick-Fil-A | 19. Huntington Bank | 24. Goodwill | |
| 5. Macy's | 10. Noodles and Company | 15. D'Amico & Sons | 20. Bus stop | 25. Million's Crab Boiled Seafood | |

Rosewood Office Plaza

1711 West County Road B
Roseville, MN 55113



PROPERTY MANAGER
LEASING AGENT

Patrick Kyle

651-999-5529
pkyle@wellingtonmgt.com



St. Paul-based Wellington Management, Inc. owns, manages and develops commercial and residential properties throughout the Twin Cities metro area. We work to make long-term community impact through careful district planning and neighborhood relationships.



Main (651) 292-9844
Fax (651) 292-0072
wellingtonmgt.com

Wellington Management © 2021 All rights reserved.