

# 2300 N STREET, NW

Washington, DC 20008

**Total Available Space for Sublease: 61,755 RSF**



Jones Lang LaSalle Brokerage, Inc.





# BUILDING HIGHLIGHTS



## RENOVATED

Building fully renovated in 2018



## AMENITIES

New tenant lounge, café, and conference center



## FITNESS FACILITY

With towel service and golf simulator



## SECURED BIKE ROOM



## ROOFTOP ACCESS

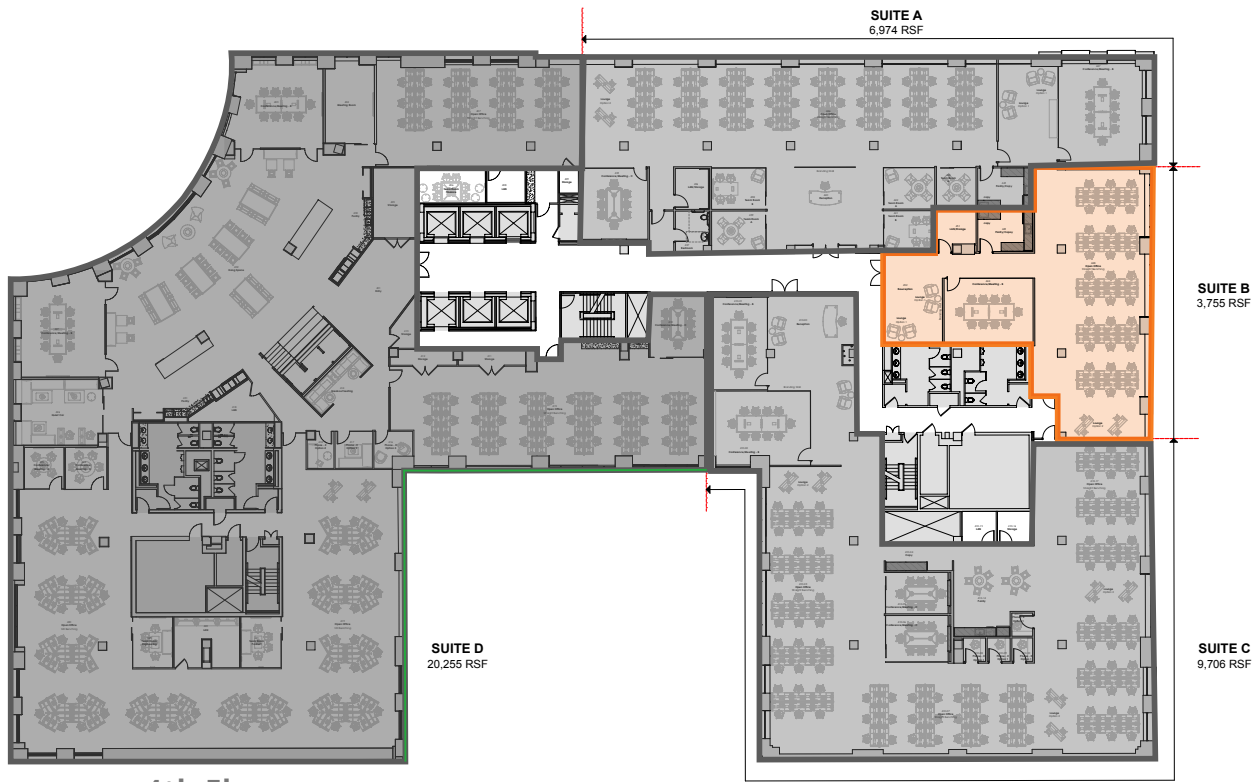


## PARKING





# SUBLEASE DETAILS



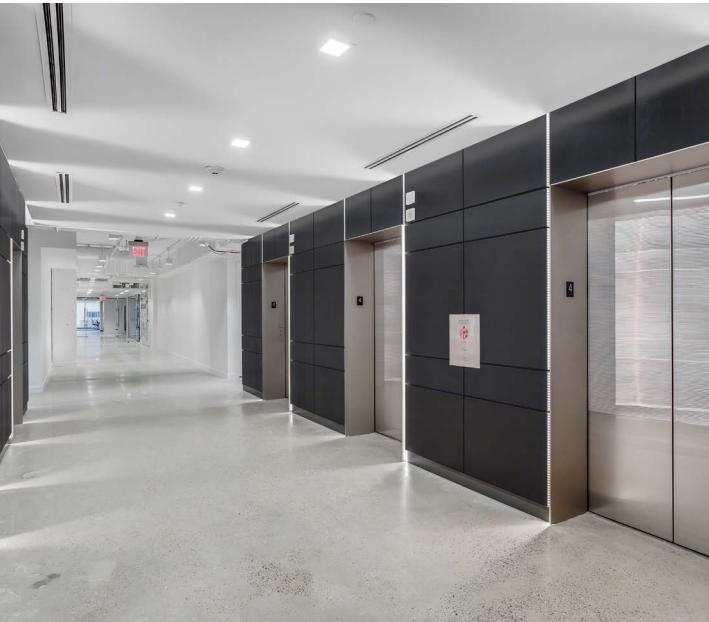
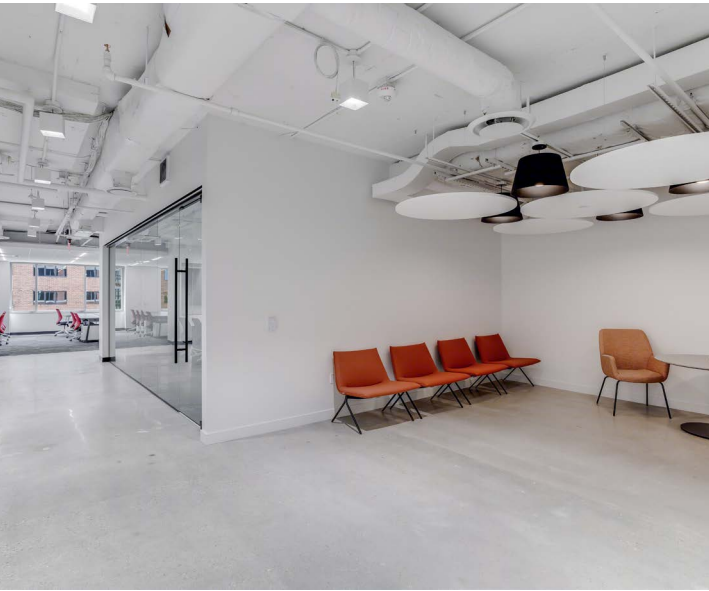
4th Floor

**Suite B- 3,755 RSF**  
30 Workstations, 1 Large Conference Room, a Kitchen Area

## Suite Information

- Brand New Build-outs
- Flexible term 1 to 5 years
- \$49.00 full service
- Unique & creative space perfect for a growing or established technology company
- High, exposed ceilings
- Fully furnished with brand new furniture and fully wired
- Variety of collaborative meeting spaces
- State-of-the-art conferencing and technology features

# 4TH FLOOR SUITE B





# SUBLEASE DETAILS

Full Term Through May 31, 2032



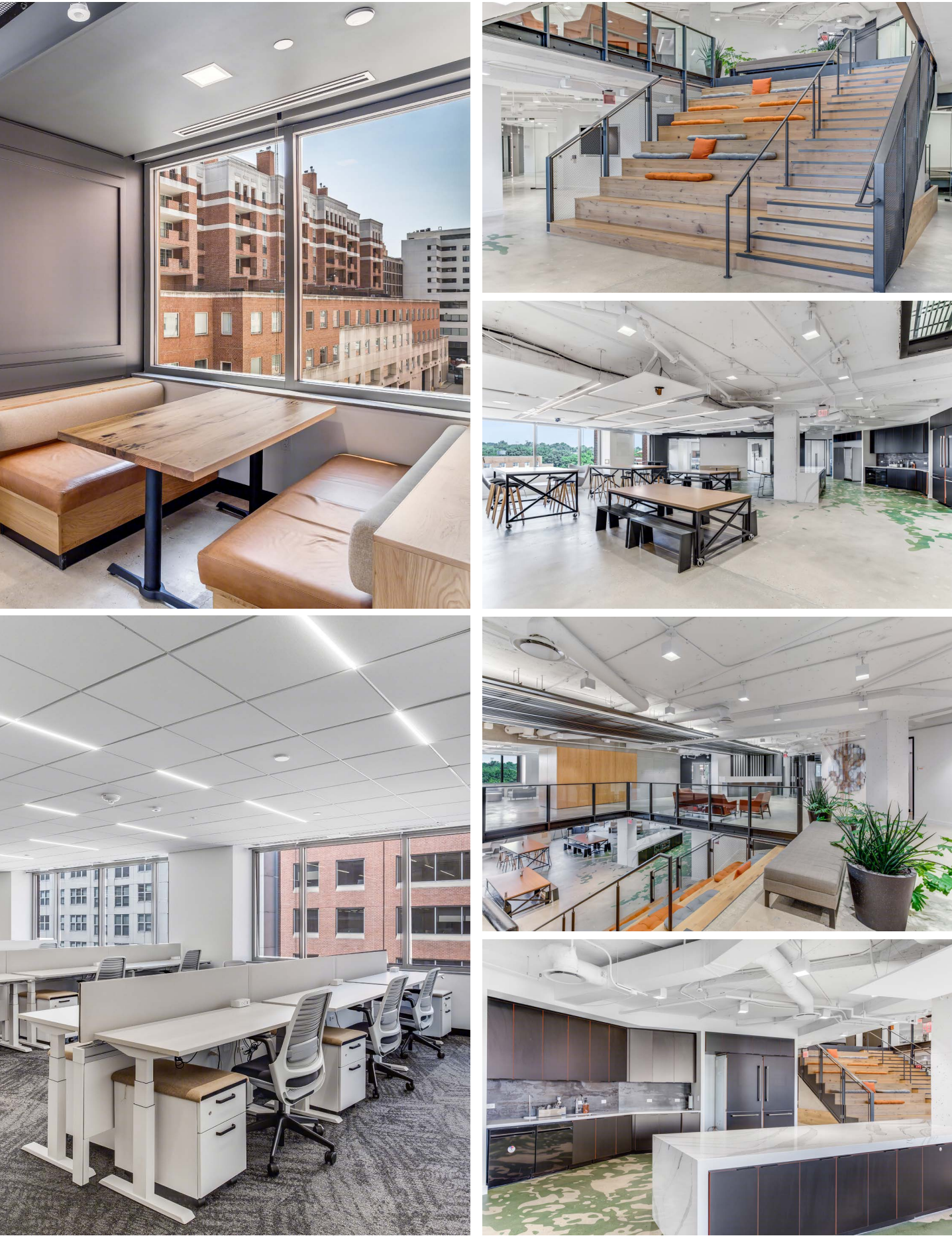
## Suite Information

- Brand New Build-outs
- Flexible term 1 to 5 years
- \$49.00 full service
- Unique & creative space perfect for a growing or established technology company
- High, exposed ceilings
- Fully furnished with brand new furniture and fully wired
- Variety of collaborative meeting spaces
- State-of-the-art conferencing and technology features
- Stairway connectivity between floors 4 & 5

VIEW BUILDING



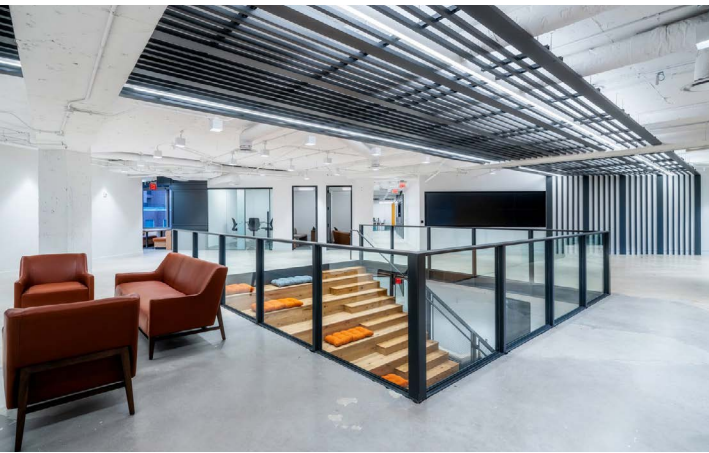
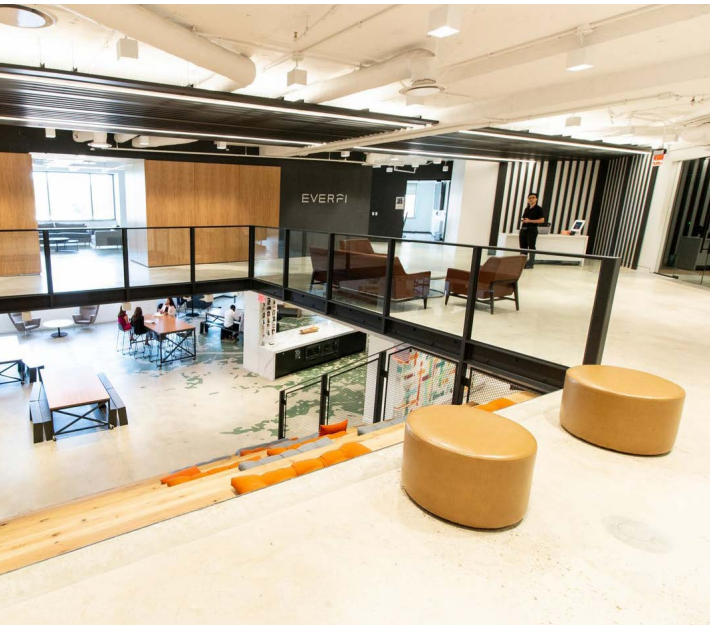
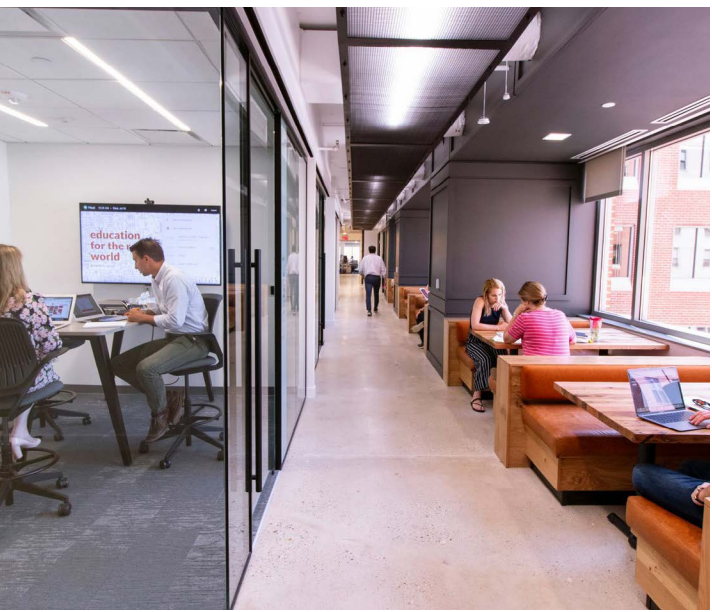
# 5TH FLOOR & 4TH FLOOR SUITE D







# OUR NEIGHBORHOOD





# 2300 N STREET, NW

**For More Information  
Please Contact:**

**Andy O'Brien**

202 719 5800

[Andy.O'Brien@am.jll.com](mailto:Andy.O'Brien@am.jll.com)

**Greg Lubar**

202 719 6217

[Greg.Lubar@am.jll.com](mailto:Greg.Lubar@am.jll.com)

2300 N Street



2300 N Street



EVERGI

Although information has been obtained from sources deemed reliable, neither Owner nor JLL makes any guarantees, warranties or representations, express or implied, as to the completeness or accuracy as to the information contained herein. Any projections, opinions, assumptions or estimates used are for example only. There may be differences between projected and actual results, and those differences may be material. The Property may be withdrawn without notice. Neither Owner nor JLL accepts any liability for any loss or damage suffered by any party resulting from reliance on this information. If the recipient of this information has signed a confidentiality agreement regarding this matter, this information is subject to the terms of that agreement. ©2022 Jones Lang LaSalle IP, Inc. All rights reserved.

