

# FOR LEASE

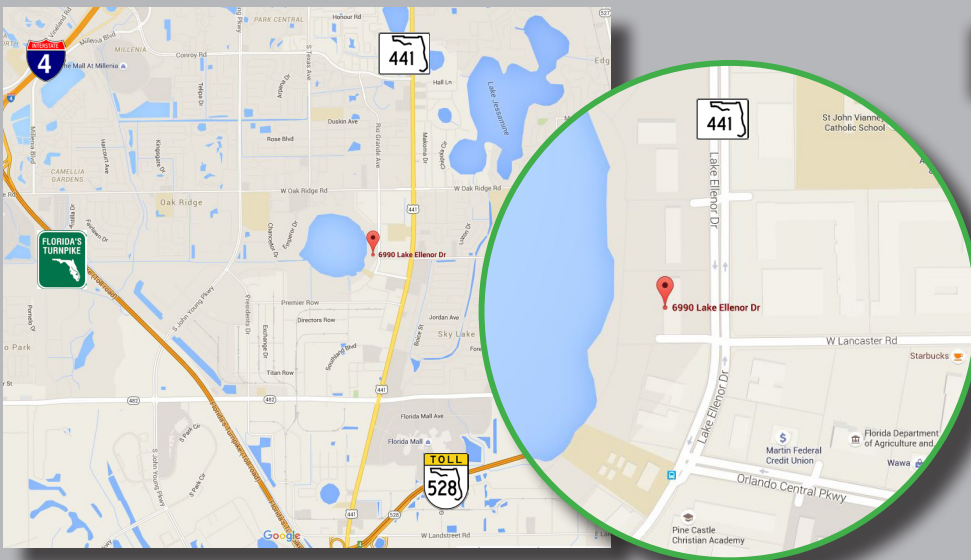


**ORLANDO CENTRAL PARK OFFICE BUILDING**      **6990 LAKE ELLENOR DR, ORLANDO, FL 32809**

## TOTAL AVAILABLE SF: 34,032 SF

TOTAL BUILDING SIZE: 34,032 square feet
AVAILABLE: Approximately 7,500 square feet
RATE: \$10.00 per square foot full service, \$6,250 per month
OWNERSHIP: Privately owned building with flexible work hours.
TYPICAL OFFICE: 12' X 14'
EXECUTIVE OFFICE: 24' X 12'
CONFERENCE ROOM: 28' X 15'

Well-appointed office space featuring private offices, conference room, break room and cubicle area. Most of the offices are fully furnished with modern furniture. The space features a spacious, full equipped community breakroom.



## PRIME LOCATION

Nearby and Accessible From:

- I-4
- Beeline Expressway
- John Young Parkway
- Orange Blossom Trail
- Florida Turnpike



3700 34<sup>th</sup> Street  
Suite 300B  
Orlando, FL 32805  
321-710-8300 phone  
www.allied-comm.com

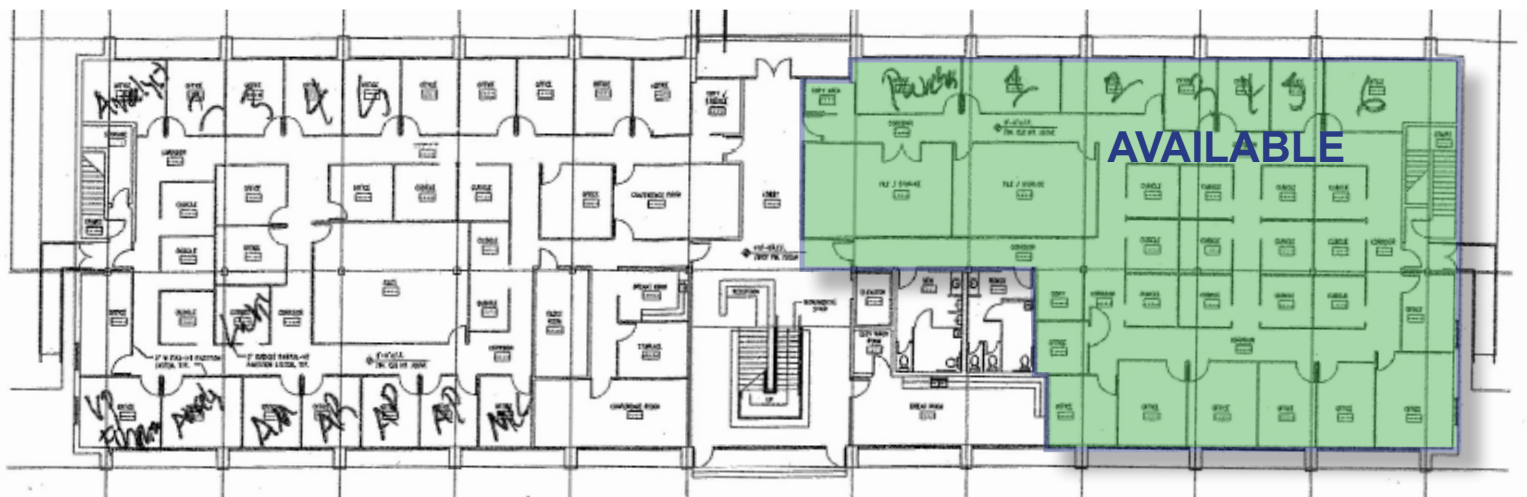


**SHER TOLAN**  
321-710-8300  
stolan@allied-comm.com

# FOR LEASE

ORLANDO CENTRAL PARK OFFICE BLDG

6990 LAKE ELLENOR DR, ORLANDO, FL 32809



3700 34<sup>th</sup> Street  
Suite 300B  
Orlando, FL 32805  
321-710-8300 phone  
www.allied-comm.com



**SHER TOLAN**  
321-710-8300  
stolan@allied-comm.com