



**SUMMERHILL**  
Commercial Real Estate, LLC

# EXECUTIVE OFFICES FOR LEASE

## 9975 Valley View Road Bldg

9975 Valley View Road  
Eden Prairie, MN 55344

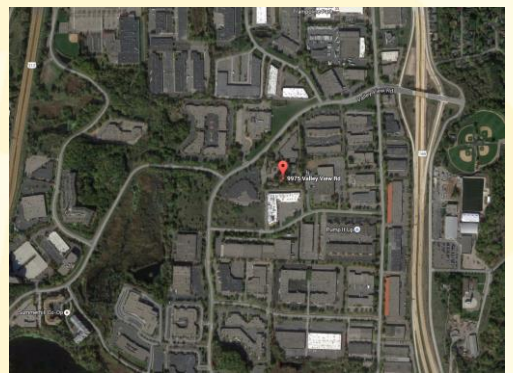


**OFFICE SPACE FOR LEASE:**

**\*\*\*RATES REDUCED\*\*\***

Suite A	**LEASED**	672 rentable sf,	\$1,064/month total
Suite B	**LEASED**	318 rentable sf,	\$504/month total
Suite C	**LEASED**	214 rentable sf,	\$339/month total
Suite D	**LEASED**	214 rentable sf,	\$339/month total
<b>Suite E</b>		<b>388 rentable sf,</b>	<b>\$614/month total</b>
Suite F	**LEASED**	223 rentable sf,	\$353/month total
Suite G	**LEASED**	196 rentable sf,	\$310/month total
Suite H	**LEASED**	158 rentable sf,	\$250/month total
Suite J	**LEASED**	132 rentable sf,	\$209/month total
Suite L	**LEASED**	312 rentable sf,	\$621/month total
Suite M	**LEASED**	456 rentable sf,	\$722/month total

- Suite E is newly renovated. New common conference room.
- The bldg is 5,051 sf w/large common area & a discounted load factor.
- Gross rate includes real estate taxes, insurance, outside maintenance, electrical, inside maintenance, & gas.
- Great individual Class C office spaces for lease in excellent quiet location in high wooded area right off of Hwy 169 & Valley View Rd.
- Great exterior grounds with a small deck.
- Common area restrooms and a common updated kitchenette area.
- Good window line with extensive outside glass.
- Well maintained property with ample parking.
- Close to many great Eden Prairie, Edina, & Bloomington amenities.



**For more information, please contact:**

Joe Smith | 952-475-5122 | [jsmith@summerhillcommercial.com](mailto:jsmith@summerhillcommercial.com)  
Peter Kordonowy | 952-475-5135 | [peterk@summerhillcommercial.com](mailto:peterk@summerhillcommercial.com)

or visit our website at:

[www.summerhillcommercial.com](http://www.summerhillcommercial.com)

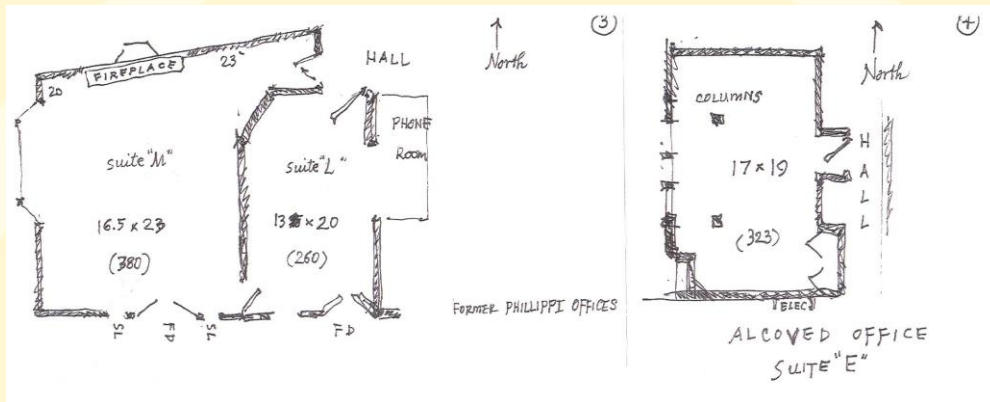
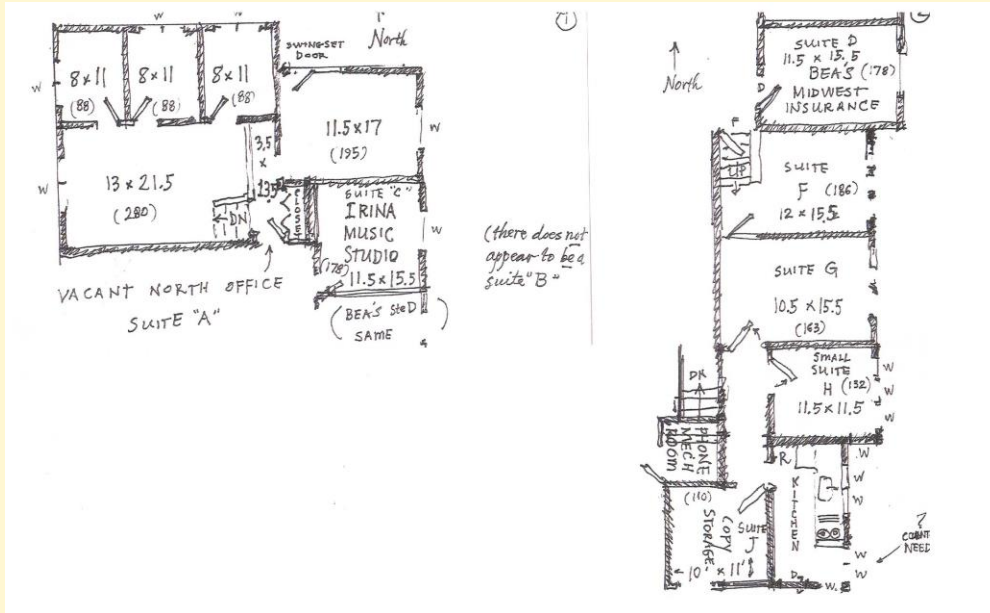


**SUMMERHILL**  
Commercial Real Estate, LLC

# EXECUTIVE OFFICES FOR LEASE

## 9975 Valley View Road Bldg

9975 Valley View Road  
Eden Prairie, MN 55344



For more information, please contact:

Joe Smith | 952-475-5122 | [jsmith@summerhillcommercial.com](mailto:jsmith@summerhillcommercial.com)  
Peter Kordonowy | 952-475-5135 | [peterk@summerhillcommercial.com](mailto:peterk@summerhillcommercial.com)

or visit our website at:

[www.summerhillcommercial.com](http://www.summerhillcommercial.com)