

PINE GROVE BUSINESS CENTER

4 Orinda Way, Orinda, CA



FOR LEASE

Bob Maderious


925.357.2010

bob.maderious@transwestern.com

UC: 00616136

 **TRANSWESTERN**[®]



 **PINE GROVE BUSINESS CENTER**
4 Orinda Way, Orinda, CA



HIGHLIGHTS



First-class office space



Short walk to BART



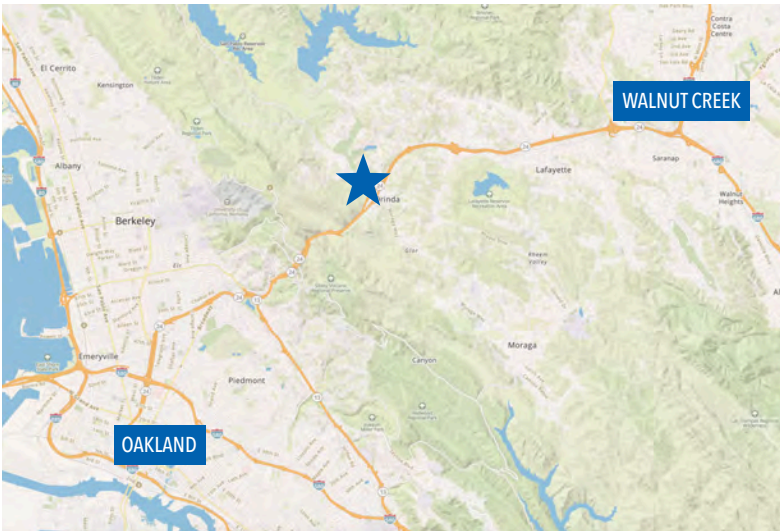
Excellent freeway access




Just 9 miles from either Oakland or Walnut Creek, 17 miles from San Francisco



90,000 SF, five building campus



 **PINE GROVE BUSINESS CENTER**
4 Orinda Way, Orinda, CA

Building A

Building C

Building E

Building B

Building D

 **TRANSWESTERN**[®]
Bob Maderious
925.357.2010
bob.maderious@transwestern.com
LIC: 00616136

CALIFORNIA
24

Walnut Creek
9 Miles

Oakland
9 Miles

San Francisco
17 Miles

BART

10 Min Walk

ORINDA COUNTRY CLUB

 **PINE GROVE BUSINESS CENTER**
4 Orinda Way, Orinda, CA

ORINDAWAY



ORINDA LIBRARY

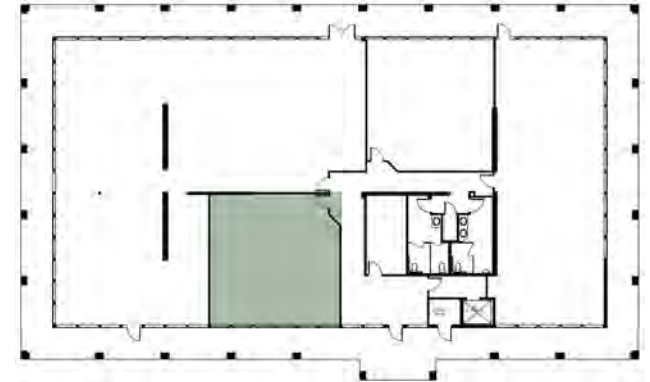
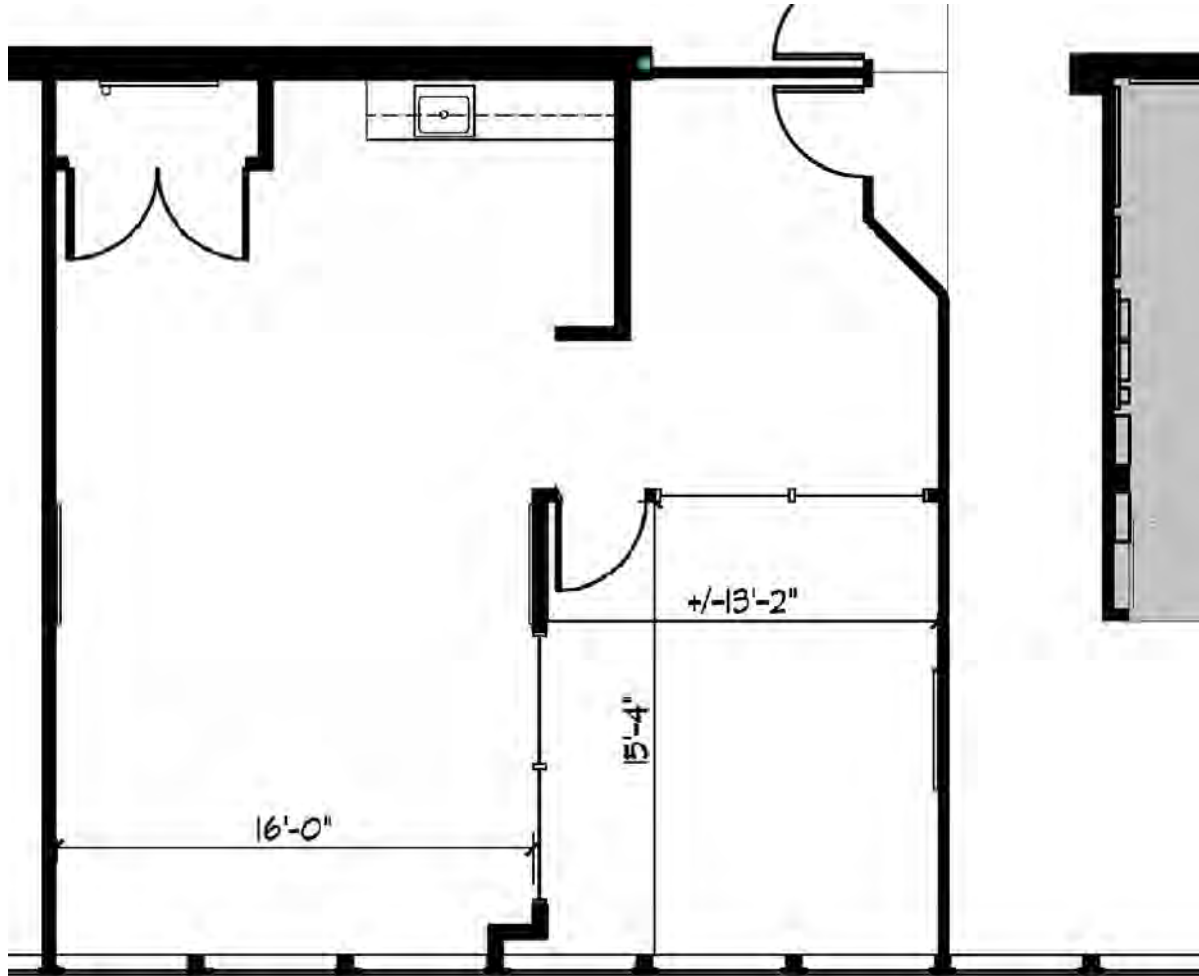
CAMINO PABLO



ORINDA THEATER

 **TRANSWESTERN**[®]
Bob Maderious
925.357.2010
bob.maderious@transwestern.com
LIC: 00616136

 **PINE GROVE BUSINESS CENTER**
4 Orinda Way, Orinda, CA



 **TRANSWESTERN®**

Bob Maderious

925.357.2010

bob.maderious@transwestern.com

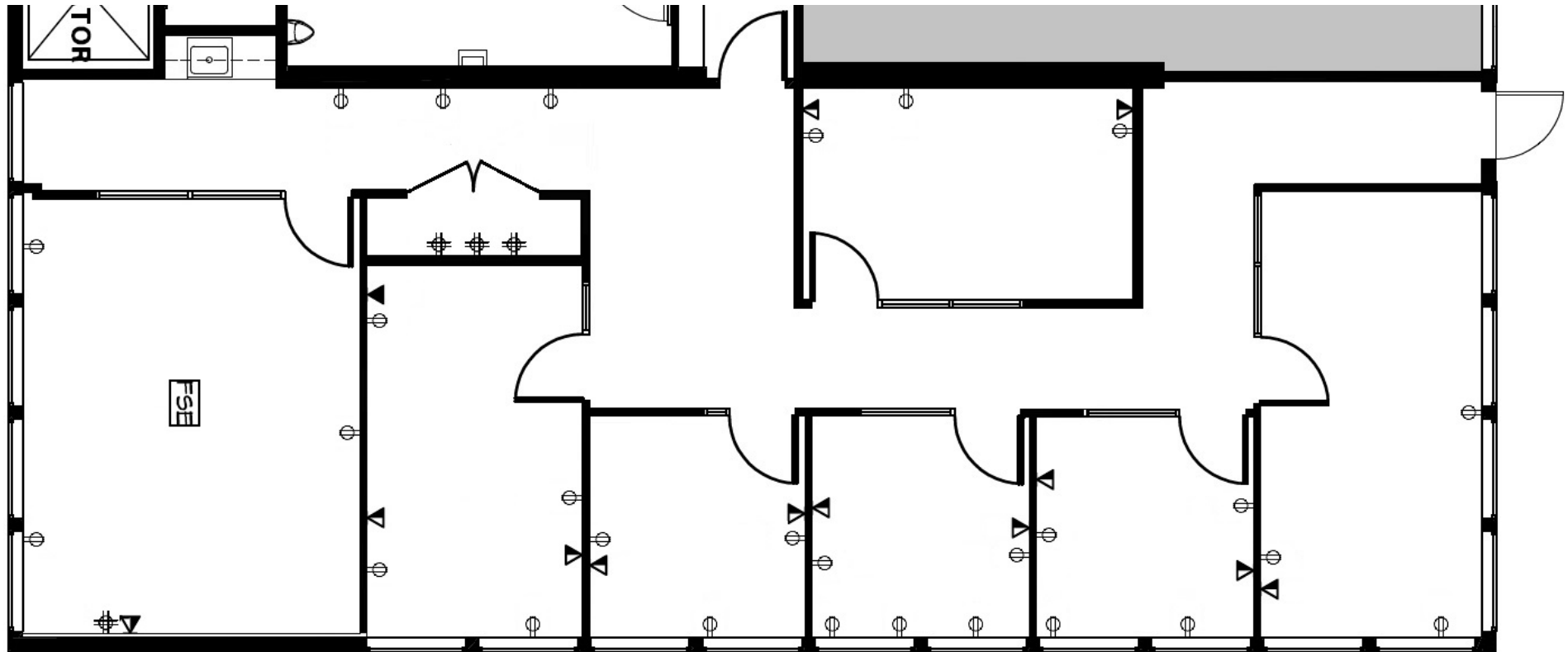
LIC: 00616136

SUITE 125-A

±1,027 SF



Building A, 1st Floor



 **TRANSWESTERN®**

Bob Maderious

925.357.2010

bob.maderious@transwestern.com

LIC: 00616136

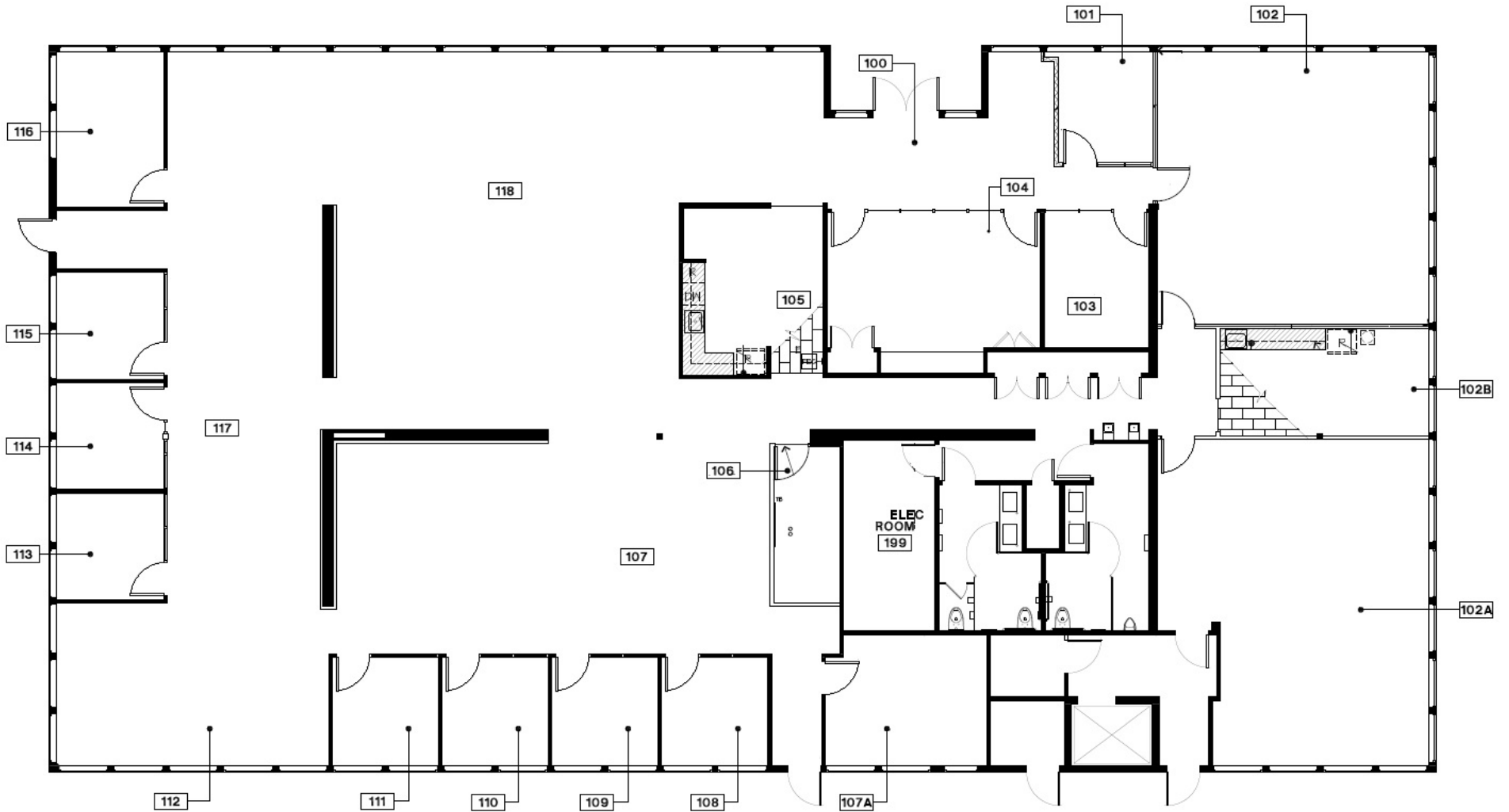
SUITE 150-A

±1,935 SF



Building A, 1st Floor

PG PINE GROVE BUSINESS CENTER
4 Orinda Way, Orinda, CA



T TRANSWESTERN®

Bob Maderious

925.357.2010

bob.maderious@transwestern.com

LIC: 00616136

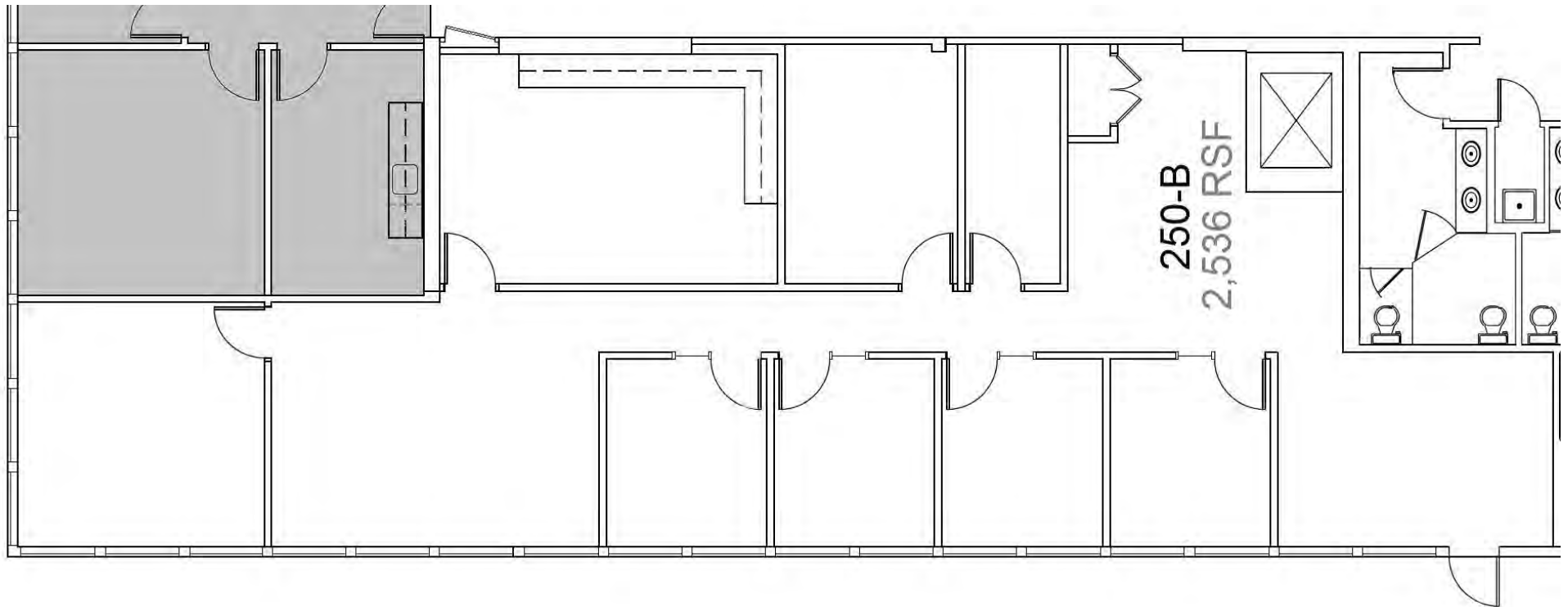
SUITE 100-B


±8,230 SF



Building B, 1st Floor

 **PINE GROVE BUSINESS CENTER**
4 Orinda Way, Orinda, CA



 **TRANSWESTERN[®]**
Bob Maderious
925.357.2010
bob.maderious@transwestern.com
LIC: 00616136

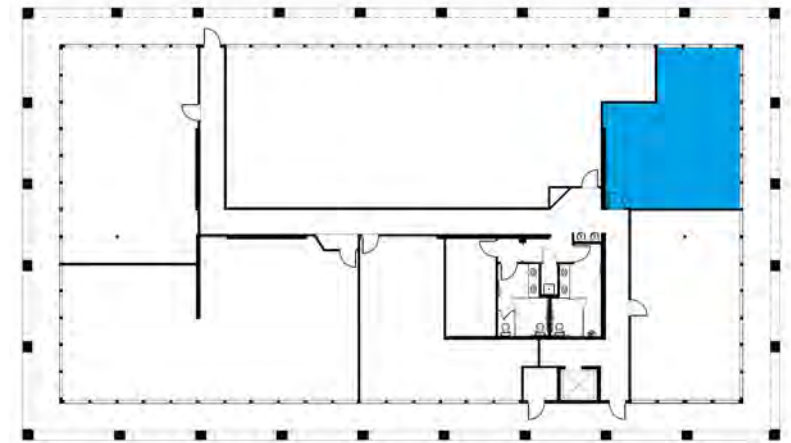
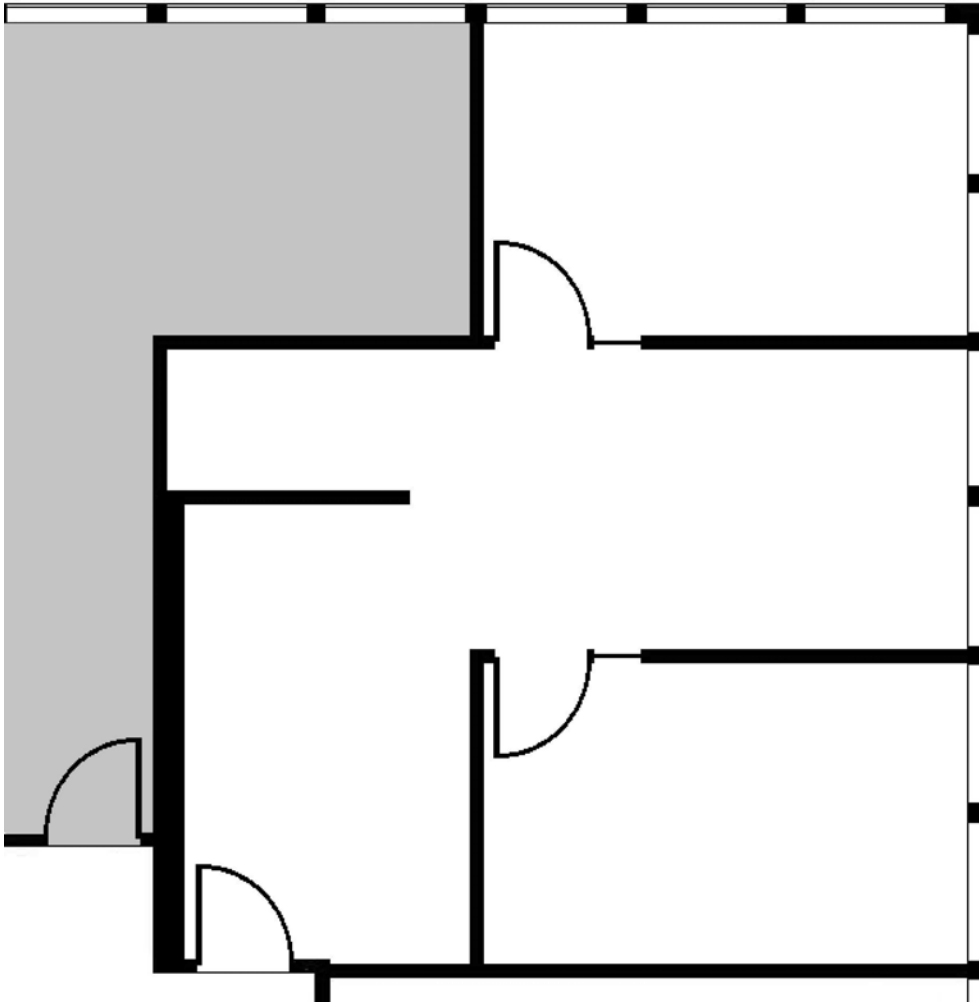
SUITE 250 - B

±2,536 SF



Building B, 2nd Floor

 **PINE GROVE BUSINESS CENTER**
4 Orinda Way, Orinda, CA



 **TRANSWESTERN[®]**

Bob Maderious

925.357.2010

bob.maderious@transwestern.com

LIC: 00616136

SUITE 110 - D

±788 SF



Building D, 1st Floor