

FOR LEASE: 1,200 SF VACANT PAD SITE

931 North Wales Road
North Wales, Montgomery County, PA 19454

EQUITY RETAIL BROKERS



PROPERTY FEATURES & DETAILS

- Pad site in front of existing Taco Bell
- For ground lease or build to suit
- Close to Montgomery Mall, Airport Square
- Area retailers include Wegmans, Dick's Sporting Goods, Best Buy, Chick-fil-A, Starbucks, AutoZone, T-Mobile, Sleep Number, and Chipotle

LOCATION DETAILS

- Located beside the intersection of North Wales Road and Bethlehem Pike, with access to both
- ±31k ADT on Bethlehem Pike
- Adj. daytime population: approximately 59,400 in 3 mi. radius
- Avg HHI: approximately \$154,000 in 3 mi. radius

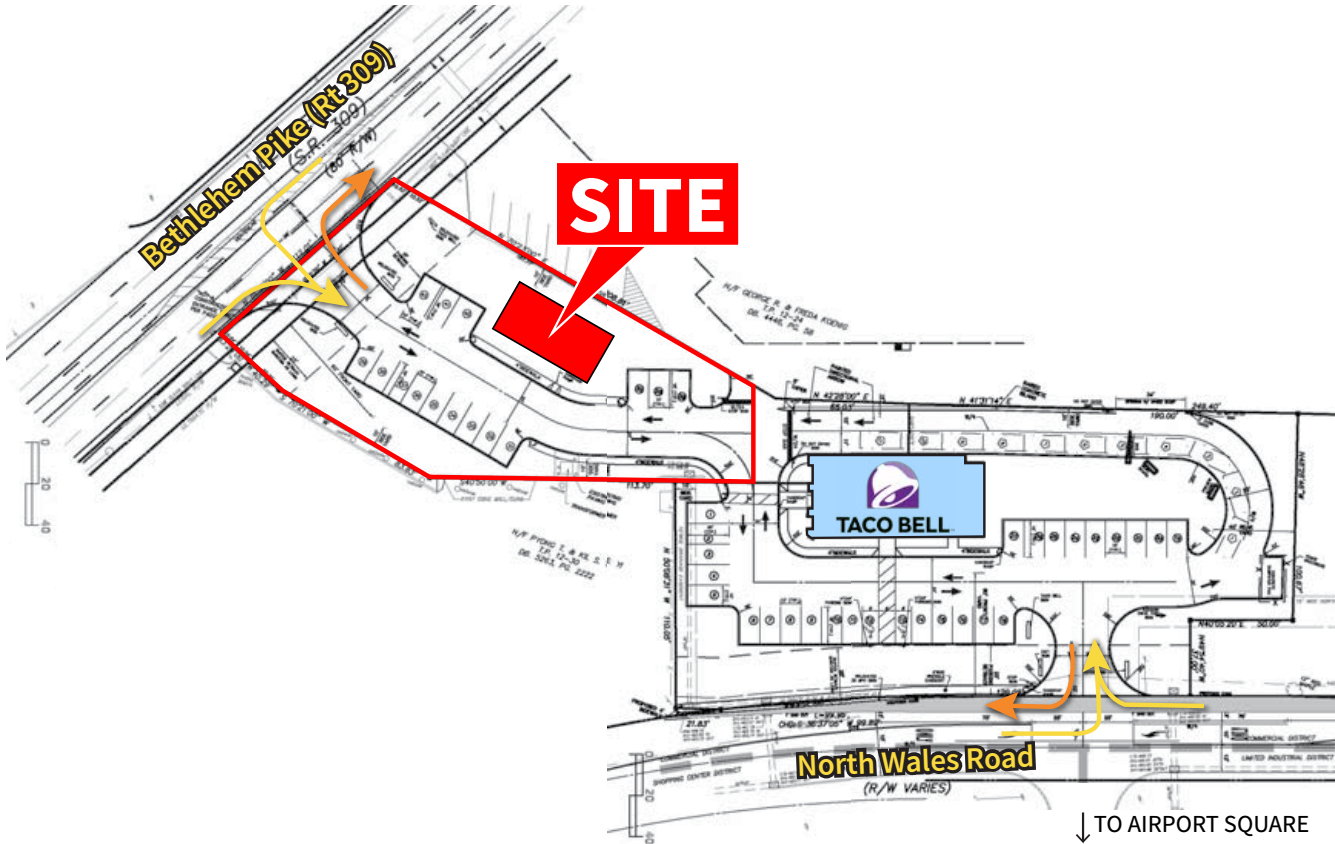
CONTACT

KEITH SEYMOUR

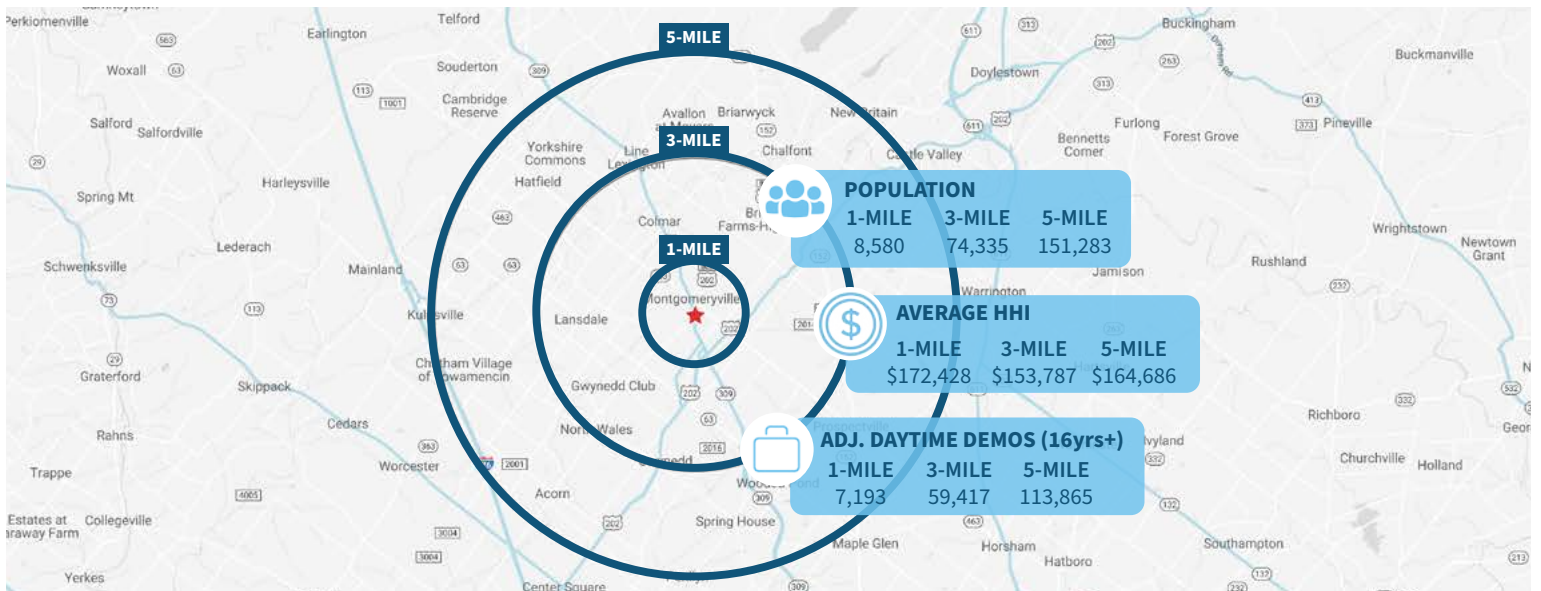
kseymour@equityretailbrokers.com

DIRECT 484.417.2249

FOR LEASE: 1,200 SF VACANT PAD SITE
 931 North Wales Road
 North Wales, Montgomery County, PA 19454



Demographic Overview (1, 3, 5-mile radius)



The right space. The right move.



Information concerning this offering is from sources deemed reliable but no warranty is made to the accuracy thereof and it is submitted subject to errors, omissions, changes of price or other conditions, prior to sale or lease or withdrawal without notice. Equity Retail Brokers is licensed in PA, NJ, & DE. Keith Seymour is a licensed salesperson in PA, NJ & DE.

07/24



Aerial Source: Google Earth Pro & Traffic Count Source: Placer.ai ('22)

Compliments of:

EQUITY RETAIL BROKERS

531 W. Germantown Pike, Ste 103 ■ Plymouth Meeting, PA 19462
610.645.7700 ■ www.equityretailbrokers.com