

FOR LEASE/SALE



JOHNSTON MEDICAL COMPLEX

510-540 North Street | Smithfield, NC 27577



CAPITAL
ASSOCIATES®

JOHNSTON MEDICAL COMPLEX

510-540 North Street | Smithfield, NC 27577

PROPERTY TYPE	Medical Office
GROSS LEASABLE AREA	16,102 SF
SPACE AVAILABLE	5,900 SF
LEASING RATE	\$19.50/SF
LEASE TYPE	Modified Gross*
SALE PRICE	Contact broker
YEAR BUILT	1996
COUNTY	Johnston
LOCATION	Smithfield, NC
FLOORS	1
PARKING	4.39/1,000 SF

*Tenant is responsible for property taxes, HVAC maintenance and repair, utilities, and janitorial.

BRET MULLER
919.523.4200
bmuller@capitalassociates.com

HENRY NICHOLSON
919.417.3570
hnicholson@capitalassociates.com



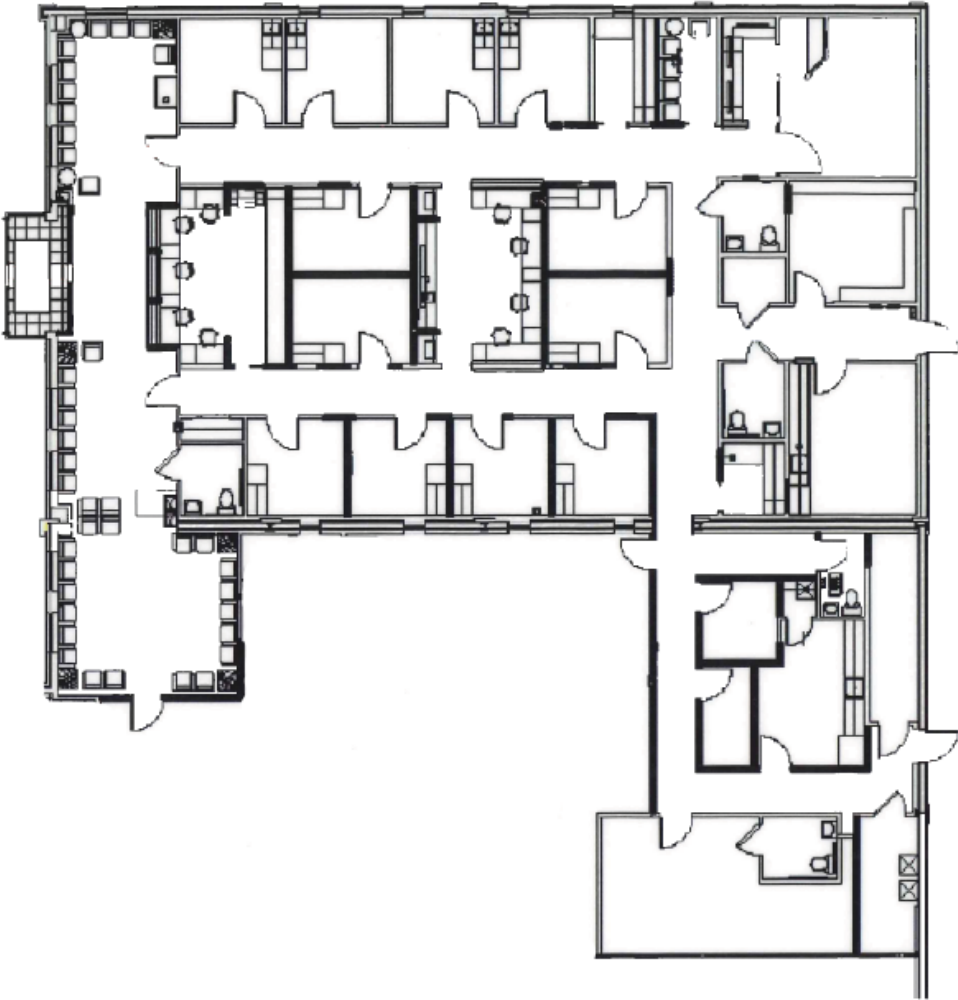
JOHNSTON MEDICAL COMPLEX

510-540 North Street | Smithfield, NC 27577

AVAILABLE

Suites 540

5,900 SF



BRET MULLER
919.523.4200
bmuller@capitalassociates.com

HENRY NICHOLSON
919.417.3570
hnicholson@capitalassociates.com

JOHNSTON MEDICAL COMPLEX

510-540 North Street | Smithfield, NC 27577

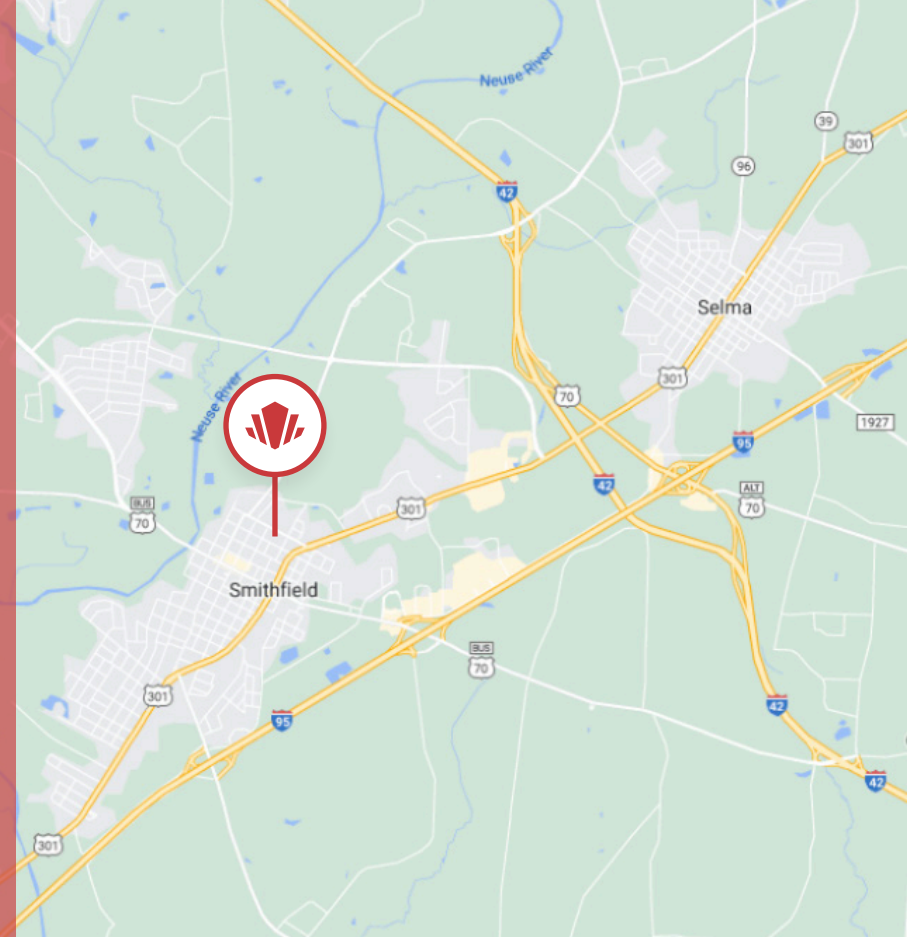
PROPERTY HIGHLIGHTS

Johnston Medical Complex is a 16,102 SF one-story office building. Some of its highlights include:

- Close proximity to UNC Health Johnston Hospital
- Home of Triangle Premier Women's Health - Smithfield
- High street visibility
- Located in a fully occupied medical strip
- Building signage

LOCATION

The building is ideally located across the street from UNC Health Johnston, Smithfield's only Hospital. Situated on the northern side of downtown, it is just a short distance away from the majority of the town's restaurants, hotels, and entertainment attractions. Additionally, the building has easy access to US-301, I-95, and US-70.



BRET MULLER

919.523.4200
bmuller@capitalassociates.com

HENRY NICHOLSON

919.417.3570
hnicholson@capitalassociates.com

BUILDING SIGNAGE



