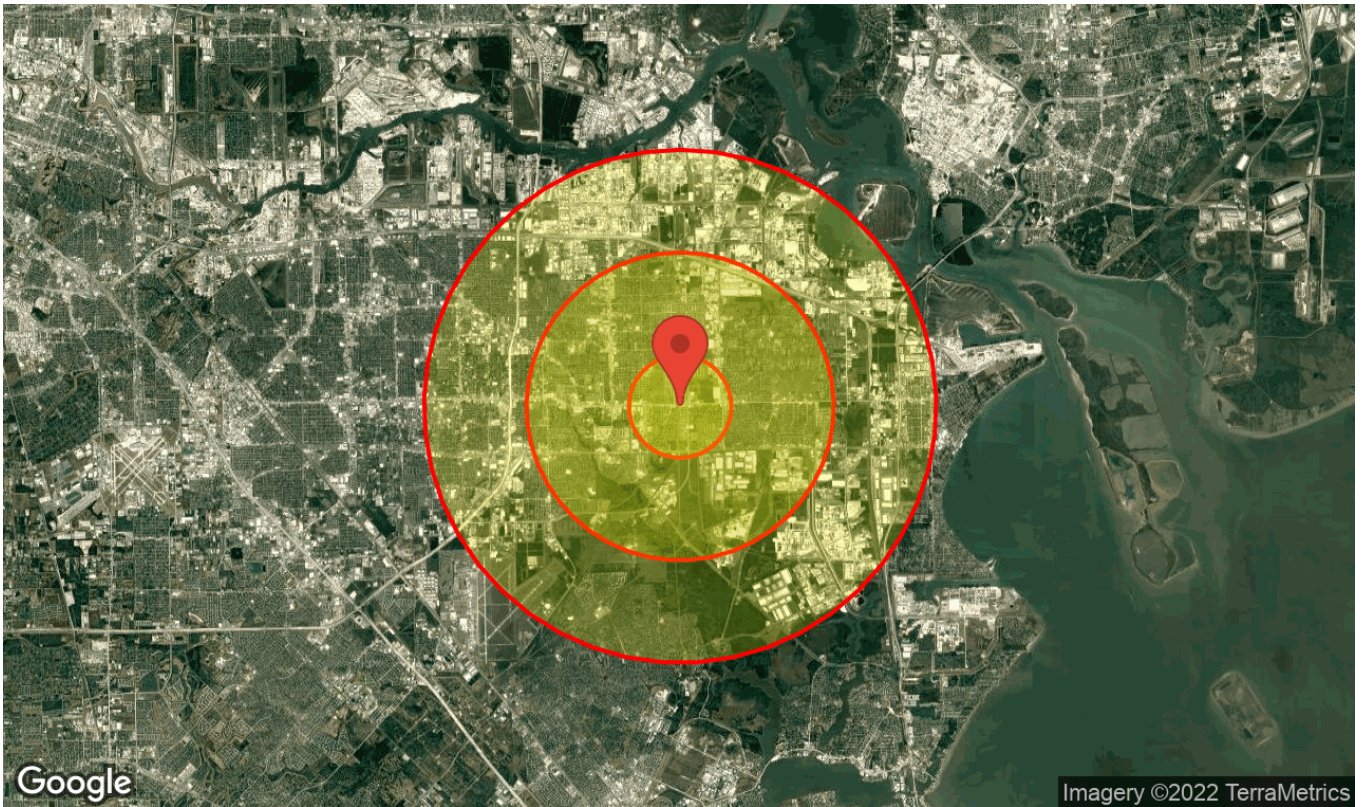




DAYTIME POPULATION REPORT

Prepared By: Stephan Robinson

Radius: 1, 3, 5 miles Latitude: 29.66362 Longitude: -95.10086



Source: Pitney Bowes 2022 data

8850 Spencer Hwy B, La Porte, TX 77571, USA

Powered by



The Most Comprehensive Commercial Real Estate Mapping & Site Assessment Portal

Disclaimer: The information provided on siteprospects.com has been obtained from public and private sources believed to be accurate and reliable. While we do not doubt their accuracy, we have not verified the information and make no guarantees, warranties or representations about their accuracy. It is your responsibility to independently confirm the accuracy and validity of any information provided on siteprospects.com.

POPULATION

| | Radius 1 mile | Radius 3 mile | Radius 5 mile |
|------------------------------------|-------------------------|-------------------------|-------------------------|
| 2010 Residential Population | 19,654 | 85,989 | 157,016 |
| 2018 Residential Population | 22,388 | 94,482 | 170,965 |
| 2023 Residential Population | 25,151 | 103,326 | 184,880 |
| Annual Population Growth | 553 | 1,769 | 2,783 |

Daytime Population Report

| | Radius 1 mile | Radius 3 mile | Radius 5 mile |
|--|-------------------------|-------------------------|-------------------------|
| Total Daytime Population | 29,303 | 102,940 | 174,241 |
| Total Employees | 17,492 | 53,459 | 80,711 |
| Total Daytime at Home Population | 11,811 | 49,481 | 93,530 |
| Daytime Employee/At Home Population Ratio | 1.48 : 1 | 1.08 : 1 | 0.86 : 1 |

■ Employees ■ At Home Population

