

Fillmore, CA

Seller Financing Available

← 15 MINUTES TO VALENCIA AND INTERSTATE 5

Rotocraft
Industries

**2.65-ACRE ADJACENT PARCEL
AVAILABLE FOR PURCHASE**

E STREET

SUBJECT PROPERTY

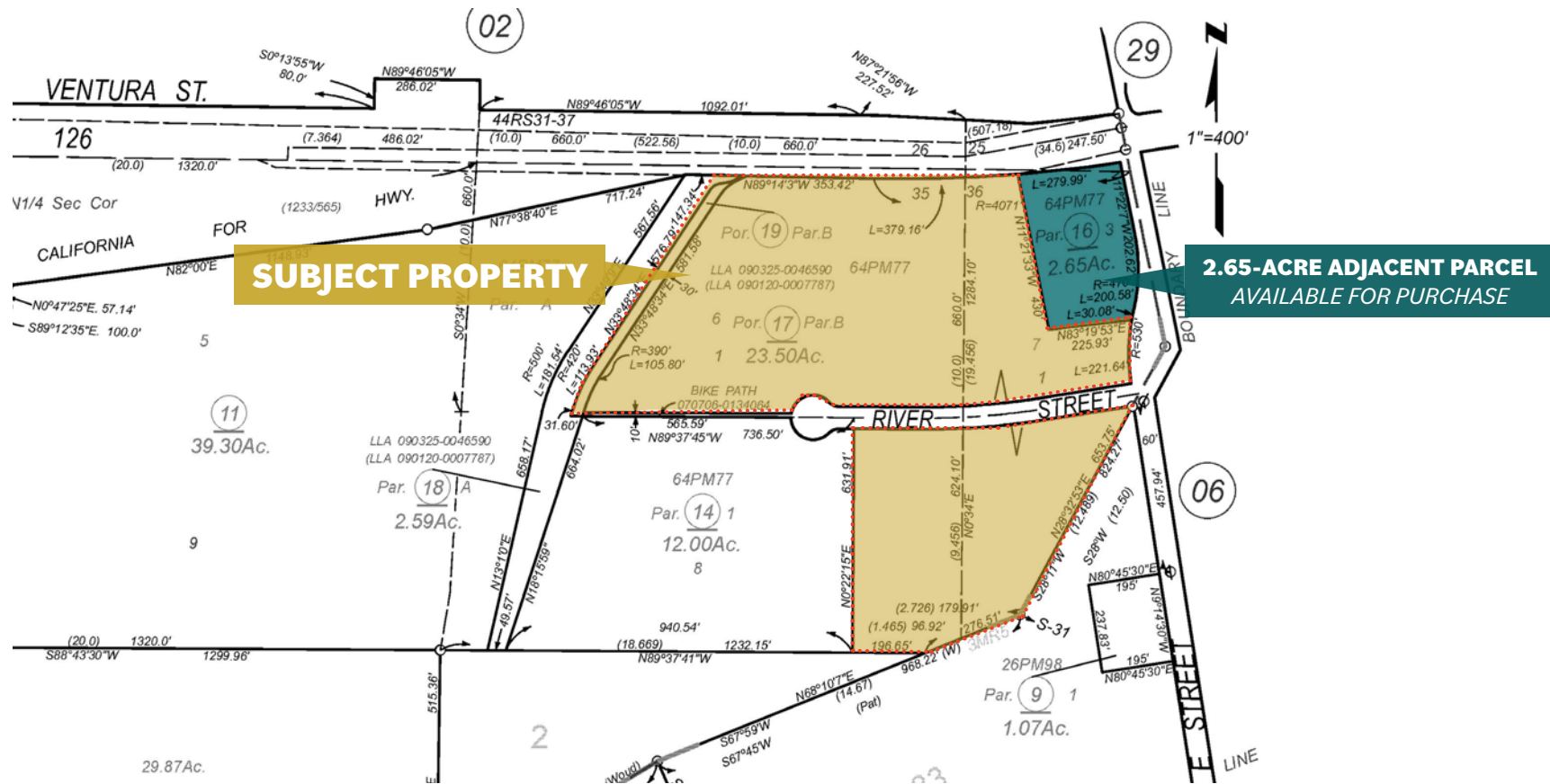
RIVER STREET

HIGHWAY 126 (VENTURA STREET)

**24.02 Acres of
Business Park
Land For Sale**

**Prime Visibility
Along Highway 126**

Parcel Map



Potential to buy the adjacent 2.65 Acre corner parcel for a total of 26.67 Acres



Sale Price:
±\$12,974,000



Sale Price/SF:
±\$12.40/SF



Available Acres:
24.02 AC



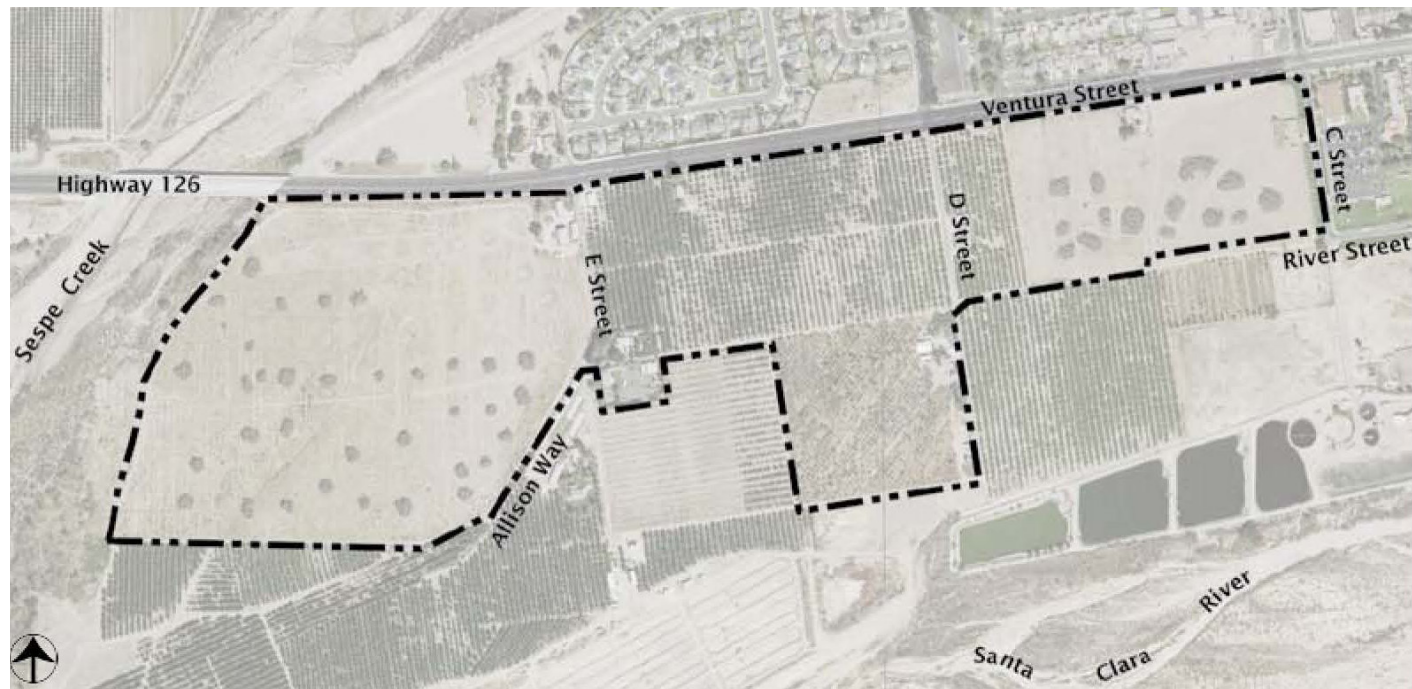
FAR:
0.45



Zoning:
BP-2

Fillmore Business Park

The Property is part of the Master Planned Fillmore Business Park that can include over one million square feet of industrial and commercial buildings, two hundred fifty thousand feet of office and engineering buildings plus a retail center with restaurants, retail shops and a major drug store retailer



City of Fillmore

Fillmore affectionately referred to as the “last best small town” is a charming city tucked in the Santa Clara Valley with a classic “turn of the 20th century” architectural style throughout its downtown area. Fillmore is also home to the one-screen Fillmore Towne Theatre, and many unique shops and businesses, including the Giessinger winery. Fillmore’s historic downtown that was established when the Southern Pacific built the railroad through the valley in 1887. The rail line also provided a name for the town: J. A. Fillmore was a general superintendent for the company’s Pacific system. Adjacent to the railroad tracks and a much-photographed city hall is the Railroad Visitor Center operated by the Santa Clara River Valley Railroad Historical Society, which has many displays as well as a fully operational 90-foot train turntable and several restored railroad cars.

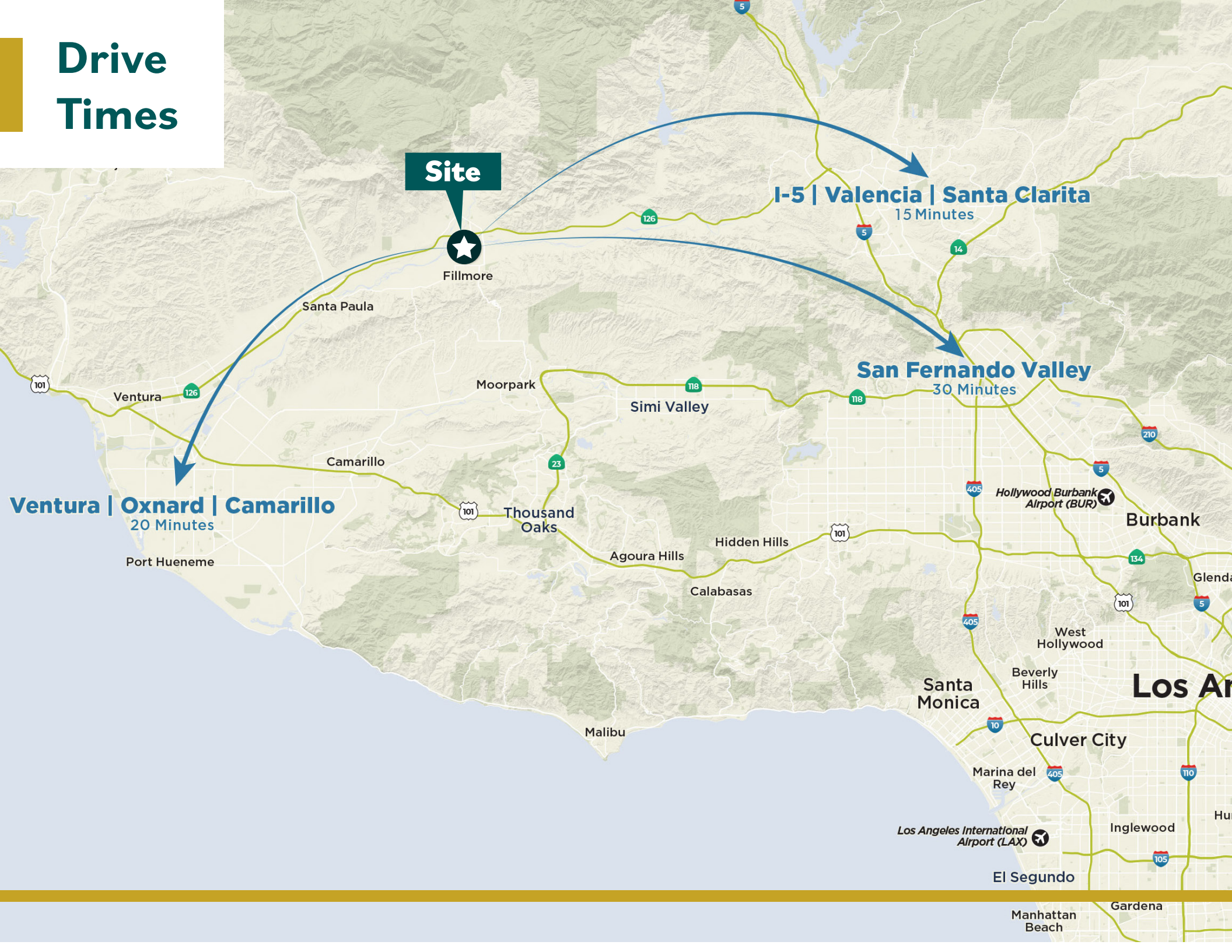
A short walk down Main Street from the Railroad Visitor Center is the Fillmore Historical Museum, which includes the restored Southern Pacific Railroad Fillmore 1887 standard-design One Story Combination Depot No. 11 built in 1887, a 1956 Southern Pacific railroad caboose, and railroad-related displays. The small post office from the community of Bardsdale and a 1919 farm worker bunkhouse from Rancho Sespe were moved to the site along with the 1906 Craftsman-style Hinckley House, the home of the community’s first dentist. The bunkhouse contains many displays illustrating the history of Fillmore and the nearby communities of Bardsdale and Piru.



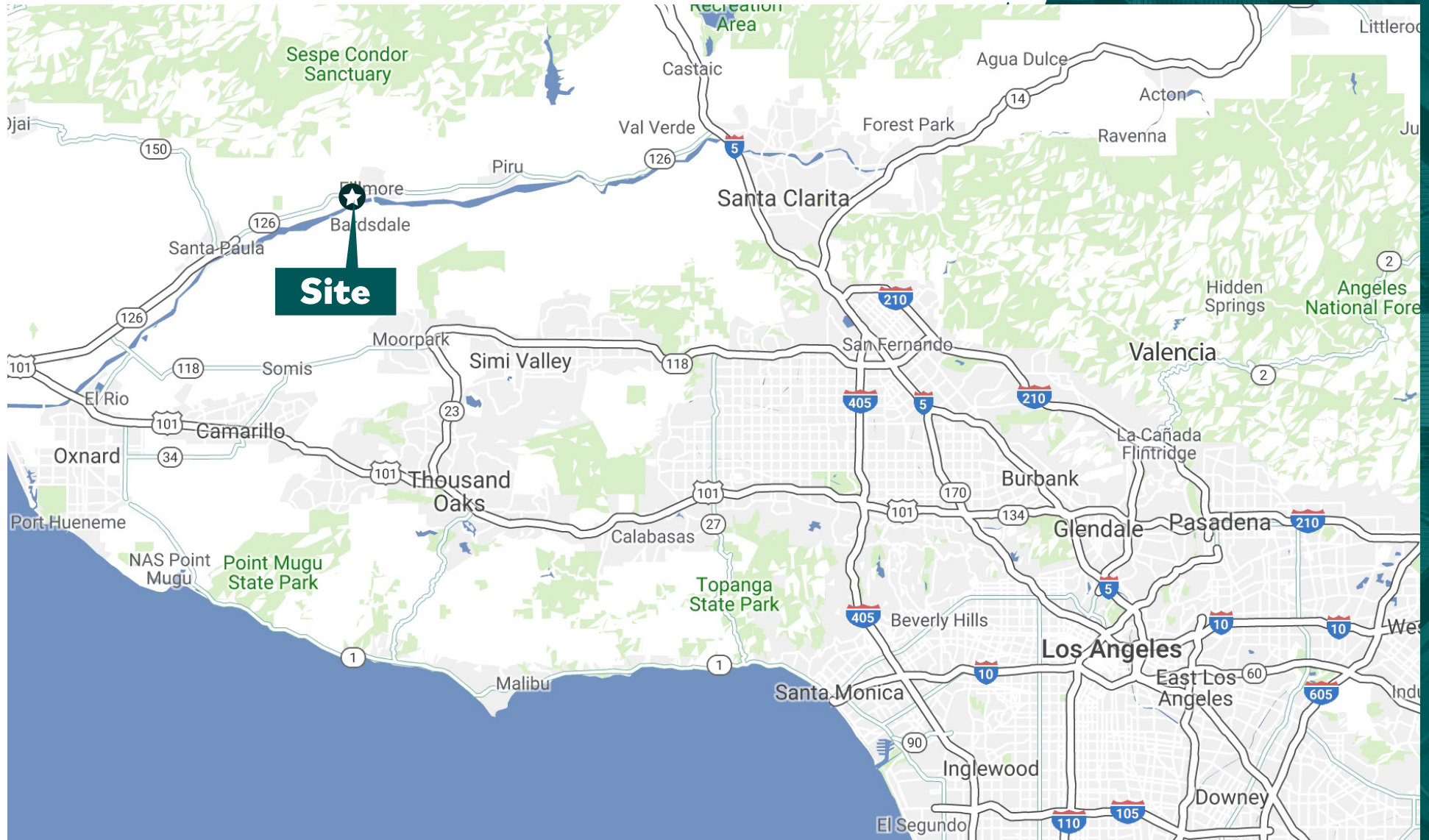
“
**Last Best
Small Town**



Drive Times



Regional Map



24.02 Acres of Business Park Land For Sale

**Prime Visibility
Along Highway 126**

Craig Peters

Vice Chairman

Lic. 00906542

craig.peters@cbre.com

+1 818 907 4616

Sam Glendon, SIOR

Senior Vice President

Lic. 01826689

sam.glendon@cbre.com

+1 818 502 6745

©2025 CBRE, Inc. All rights reserved. This information has been obtained from sources believed reliable but has not been verified for accuracy or completeness. You should conduct a careful, independent investigation of the property and verify all information. Any reliance on this information is solely at your own risk. CBRE and the CBRE logo are service marks of CBRE, Inc. All other marks displayed on this document are the property of their respective owners, and the use of such logos does not imply any affiliation with or endorsement of CBRE. Photos herein are the property of their respective owners. Use of these images without the express written consent of the owner is prohibited.

CBRE