

13641 E. SEVEN MILE ROAD
DETROIT, MICHIGAN

RETAIL/OFFICE FOR SALE OR LEASE
2,420 Square Feet Available



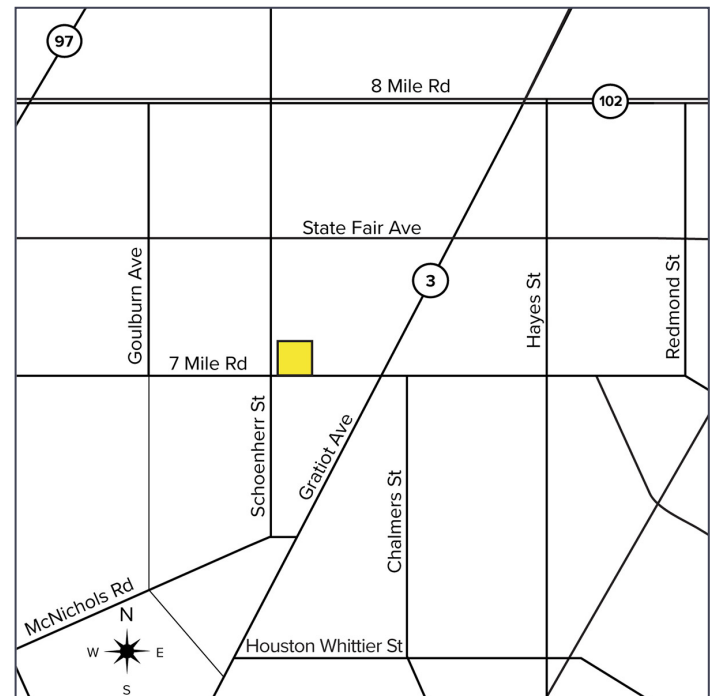
**SIGNATURE
ASSOCIATES**
KNOW SIGNATURE | KNOW RESULTS

OSBORN CENTER



PROPERTY FEATURES

- 2,420 square feet available
- Many potential uses
- Zoned B4
- Ample parking
- Available immediately
- Sale Price: \$400,000 (165.29/sq. ft.)
- Lease Rate: \$3,500/month Gross



For more information, please contact:

JOE STACK
(248) 359 0615
jstack@signatureassociates.com

CHRIS MONSOUR
(248) 948 0107
cmonsour@signatureassociates.com

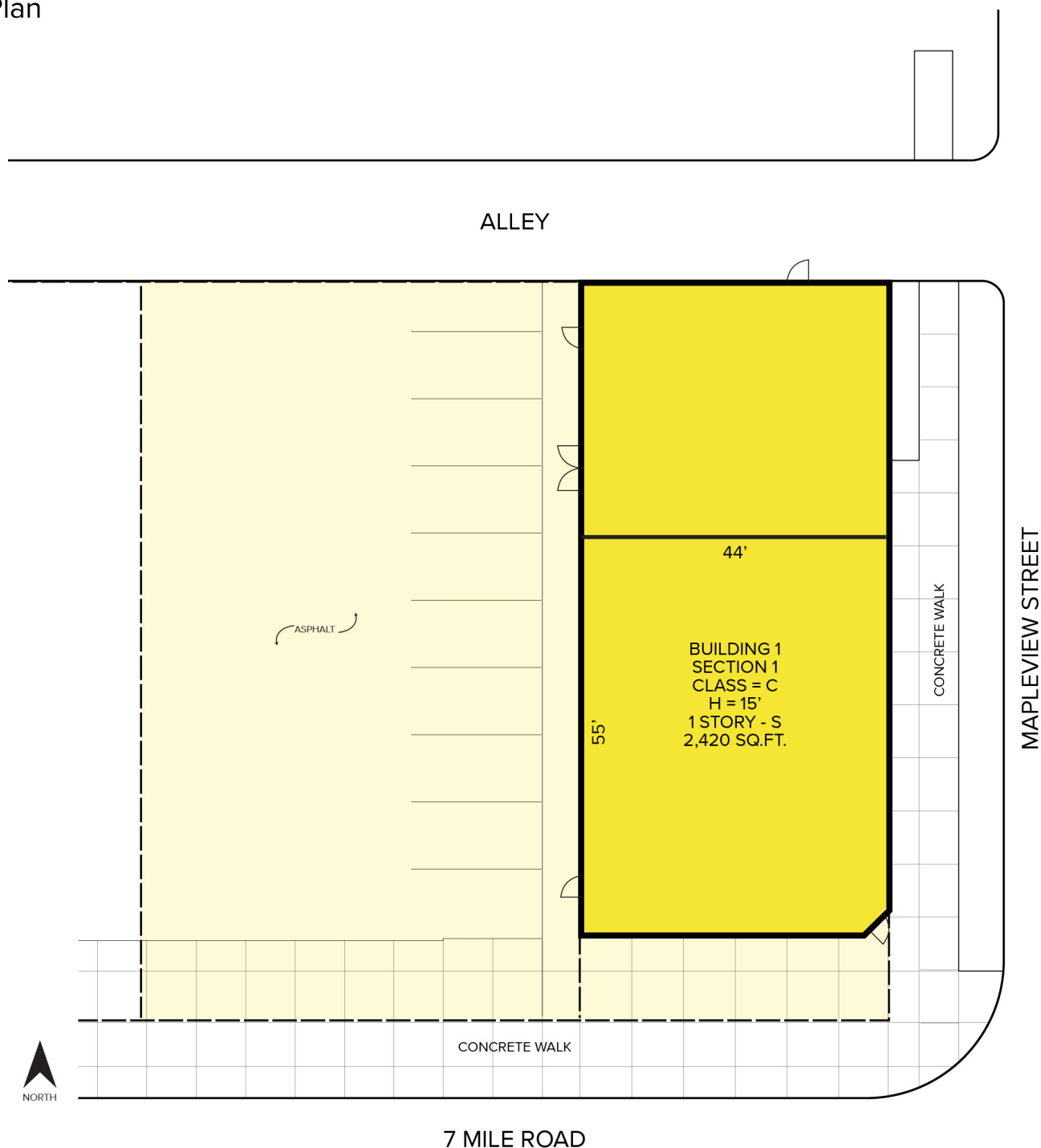
SIGNATURE ASSOCIATES
One Towne Square, Suite 1200
Southfield, MI 48076
www.signatureassociates.com

13641 E. Seven Mile Road – Detroit, Michigan

Retail/Office For Sale or Lease

2,420
Square Feet
AVAILABLE

Site Plan



For more information, please contact:

JOE STACK
(248) 359 0615
jstack@signatureassociates.com

CHRIS MONSOUR
(248) 948 0107
cmonsour@signatureassociates.com

SIGNATURE ASSOCIATES
One Towne Square, Suite 1200
Southfield, MI 48076
www.signatureassociates.com

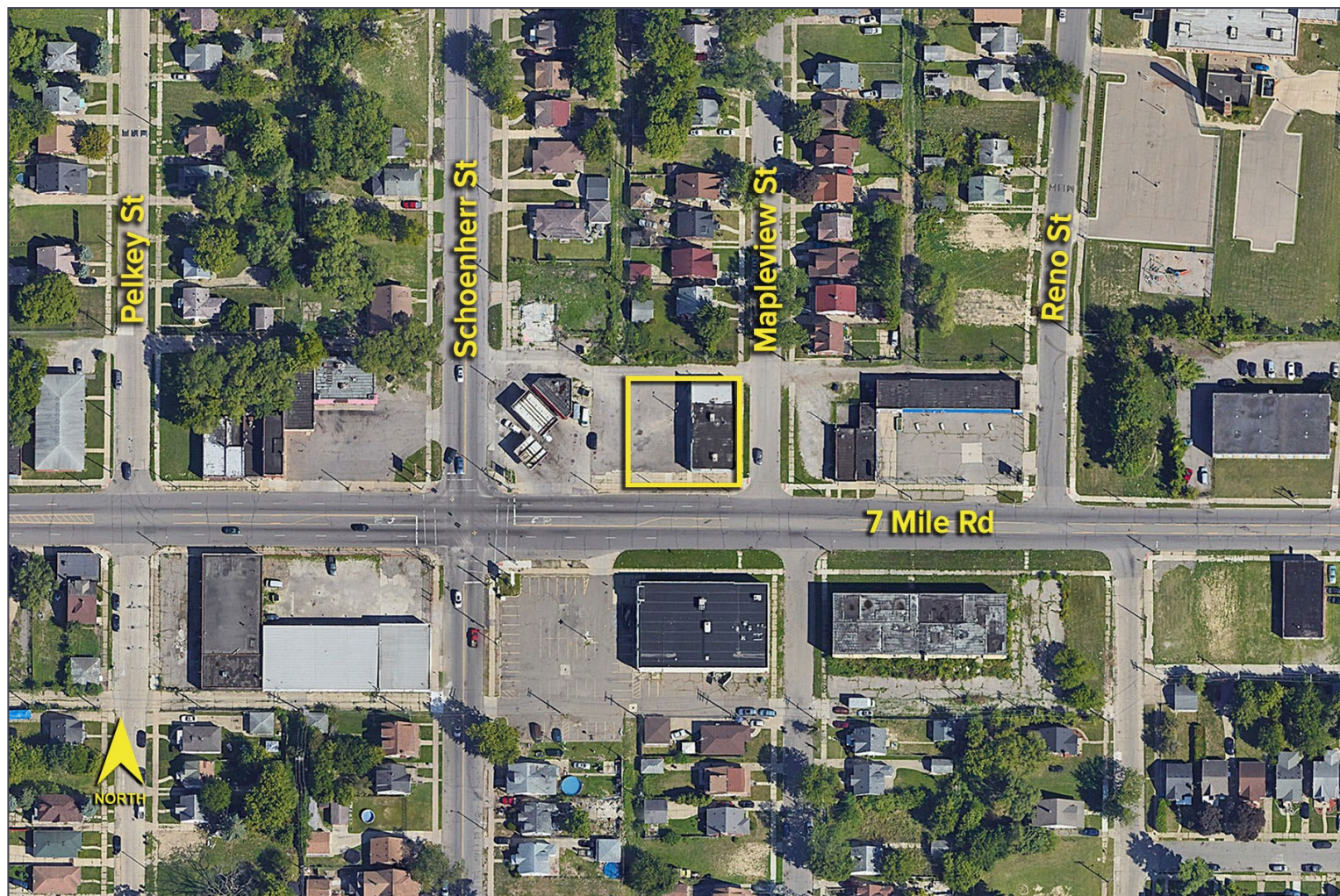
Information is subject to verification and no liability for errors or omissions is assumed. Price is subject to change and listing withdrawal.

13641 E. Seven Mile Road – Detroit, Michigan

Retail/Office For Sale or Lease

2,420
Square Feet
AVAILABLE

Aerial



For more information, please contact:

JOE STACK
(248) 359 0615
jstack@signatureassociates.com

CHRIS MONSOUR
(248) 948 0107
cmonsour@signatureassociates.com

SIGNATURE ASSOCIATES
One Towne Square, Suite 1200
Southfield, MI 48076
www.signatureassociates.com

Information is subject to verification and no liability for errors or omissions is assumed. Price is subject to change and listing withdrawal.