

135
LEMON SOUTH

±1,925 SF REMAINING!

CREATIVE OFFICE SPACE OR RETAIL AVAILABLE IN OLD TOWNE ORANGE

NEWMARK

±1,925 SF OFFICE
SPACE AVAILABLE
FOR LEASE



At 135 South Lemon, you will find an open work space that is both modern and visually appealing. The polished concrete floors give the area a sleek and industrial aesthetic, while the wood beam ceilings add a touch of warmth and character to the environment. This creates a unique and inviting atmosphere that is sure to inspire creativity and foster collaboration among employees.



HIGHLIGHTS

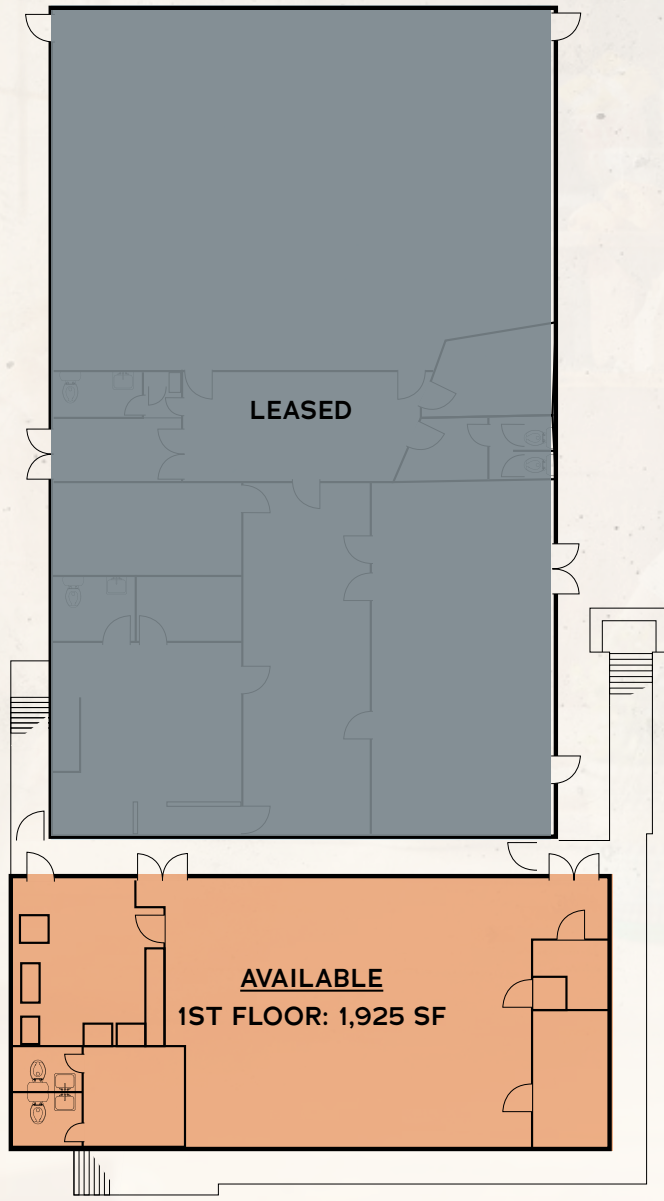
- 135 S. Lemon Street is a unique 8,300 SF office space in the Historical Old Towne Orange.
- Located near the main thoroughfare to Chapman University with 8,305 students enrolled.
- One of the few buildings with a private parking lot and within close proximity (0.1 mile) to multiple public parking lots and the existing 720 stall parking structure.
- Property is conveniently located within walking distance of the Orange Circle, Chapman University, and the Metrolink. One metrolink stop away from Angel Stadium and the Honda Center.
- Furniture may be available.



135 SOUTH LEMON STREET

FLOOR PLAN

1st Floor: 1,925 SF Available



135 LEMON SOUTH



OLD TOWNE ORANGE

Old Town Orange, is a charming and historic district known for its preserved architecture and vibrant atmosphere and is renowned for its well-preserved buildings, many of which date back to the early 20th century. The area features a mix of architectural styles, including Victorian, Craftsman, and Spanish Colonial Revival, giving it a unique and picturesque character.

Old Town Orange is home to a variety of shops, boutiques, antique stores, and art galleries, making it a popular destination for locals and tourists alike. The district also boasts a diverse culinary scene, with numerous restaurants, cafes, and bakeries offering a range of cuisines.

In addition to its cultural and commercial offerings, Old Town Orange hosts various events and festivals throughout the year, including the Orange International Street Fair and the Orange Plaza Car Show. These events attract visitors from all over and contribute to the lively and festive atmosphere of the area.

Old Town Orange is a vibrant and historic district that offers a blend of preserved architecture, unique shops, and a thriving culinary scene, making it a delightful destination for residents and visitors to explore and enjoy.

135 LEMON SOUTH



*AS-BUILT BEING CONFIRMED.

WHAT'S NEARBY



135 S. LEMON STREET
ORANGE, CALIFORNIA

CREATIVE SPACE AVAILABLE IN OLD TOWNE ORANGE

135
LEMON SOUTH

GREG TIPPIN

Senior Managing Director

t 949-608-2032

greg.tippin@nmrk.com

CA RE License #01247654

CORPORATE LICENSE #01355491

The distributor of this communication is performing acts for which a real estate license is required. The information contained herein has been obtained from sources deemed reliable but has not been verified and no guarantee, warranty or representation, either express or implied, is made with respect to such information. Terms of sale or lease and availability are subject to change or withdrawal without notice.

NEWMARK

18401 Von Karman Avenue
Suite 150
Irvine, CA 92612

nmrk.com