



# Office Space For Lease

ALAN FELDSHUE  
EXECUTIVE MANAGING DIRECTOR, OFFICE SERVICES  
727 442 7296  
alan.feldshue@colliers.com



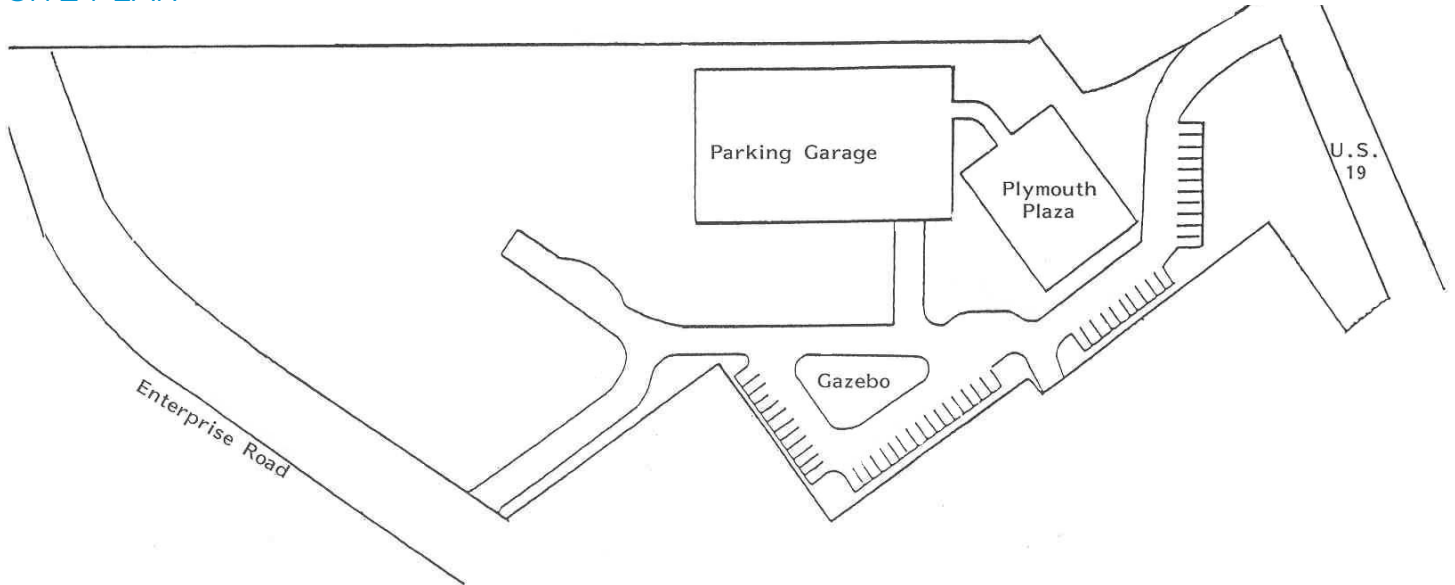
COLLIERS INTERNATIONAL  
TAMPA BAY FLORIDA  
311 Park Place Blvd., Suite 600  
Clearwater, FL  
www.colliers.com

## PLYMOUTH PLAZA 26750 US Highway 19 N. Clearwater, FL 33761

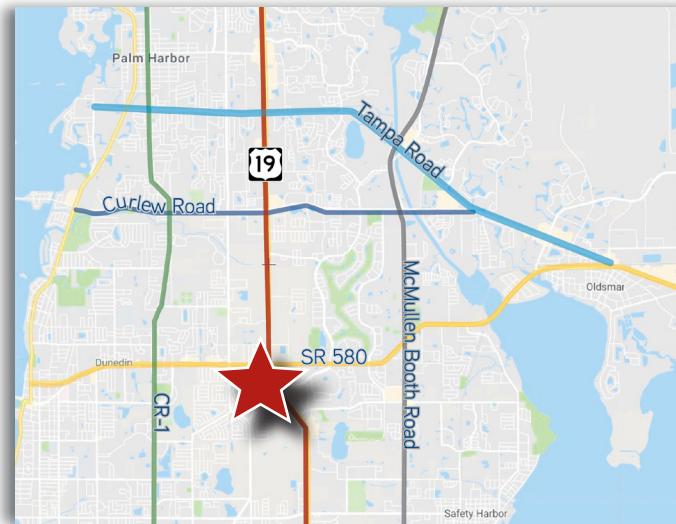
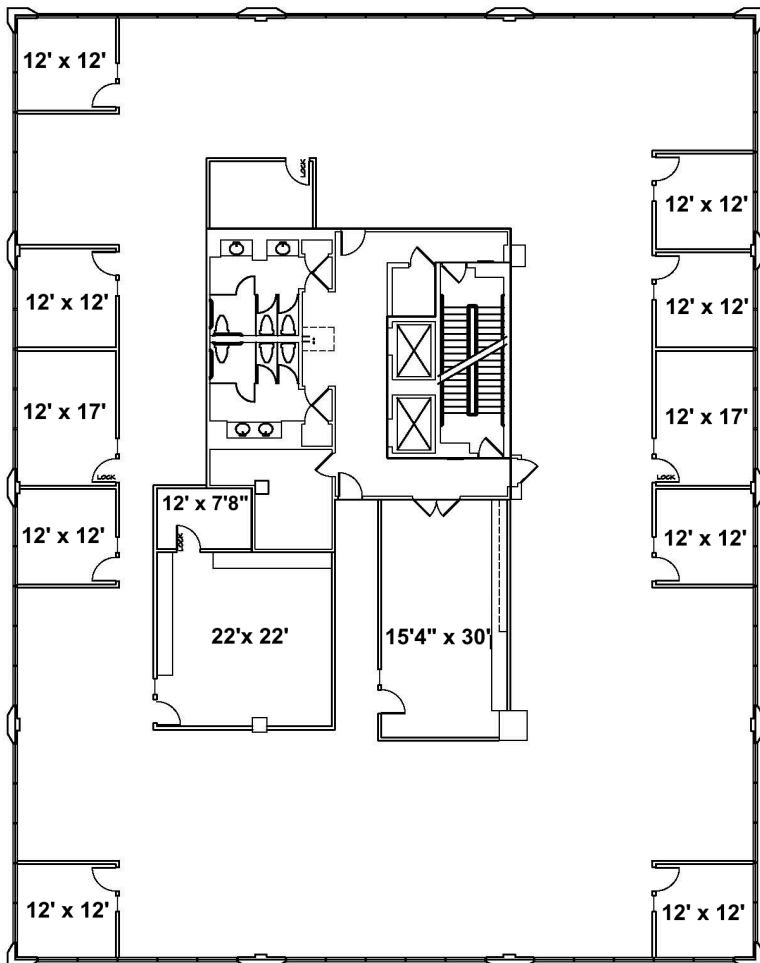
This five-story Class "A" office building containing 53,723 square feet is conveniently located on the west side of U.S. Highway 19 between Countryside Boulevard and S.R. 580.

- > 1,747 –11,289 SF Available
- > 354 car parking garage
- > Campus-style working environment
- > U.S. 19 signage
- > Close proximity to Westfield Countryside Mall, restaurants and retail services
- > \$22.00/SF Full Service

### SITE PLAN



### THIRD FLOOR PLAN



### CONTACT US

ALAN FELDSHUE  
Executive Managing Director | Office Services  
727 442 7296  
[alan.feldshue@colliers.com](mailto:alan.feldshue@colliers.com)



COLLIERS INTERNATIONAL  
TAMPA BAY FLORIDA  
311 Park Place Blvd., Suite 600  
Clearwater, FL  
[www.colliers.com](http://www.colliers.com)