



# TEQ Corporate Centre

2295 & 2315  
Bristol Circle

OAKVILLE | ON

**Lindsay Sparks\***

Vice President  
905 315 3687  
lindsay.sparks@cbre.com

**Kay Locke\***

Senior Vice President  
416 798 6268  
kay.locke@cbre.com

**Kayla Parro\***

Sales Support Coordinator  
416 798 6285  
kayla.parro@cbre.com

**Hajira Farooq\***

Transaction Manager  
416 798 6220  
hajira.farooq@cbre.com

**CBRE**

# Welcome to TEQ Corporate Centre



Discover the prime office spaces at 2295 and 2315 Bristol Circle, nestled in the bustling Winston Churchill Business Park in Oakville. The complex features two expansive 2-storey office buildings, each spanning 40,000 sf and boasting unrivalled exposure and abundant parking options. Enjoy the convenience of numerous nearby amenities and quick access to QEW and Hwy 403.

Professionally managed and strategically situated, these office buildings are the perfect fit for businesses seeking a high-visibility location.

Upgrade your workspace today at in Oakville's premier business park.

## Property Highlights



### FLEXIBLE SIZE OFFERING

2,342 to 10,954 Sq. Ft. available across both buildings.



### EASY TRANSIT ACCESS

2 Transit route stops at your doorsteps. Minutes to both Oakville and Clarkson GO.



### AMPLE PARKING

Tenants and Visitors enjoy ample, free surface parking *Approx. 4,100 sf leased*



### ACCESSIBILITY

Each building features a spacious elevator for floor-to-floor access.

# 2295 Bristol Circle

## Availabilities



### Units

Suite 201: 10,594 Sq. Ft.

Suite 201A: 3,439 Sq. Ft.



Suite 201B: 2,844 Sq. Ft.

Suite 201C: 4,100 Sq. Ft.



### Asking Net Rent

\$17.95 PSF



### Additional Rent

\$14.85

*Utilities and Janitorial Included*

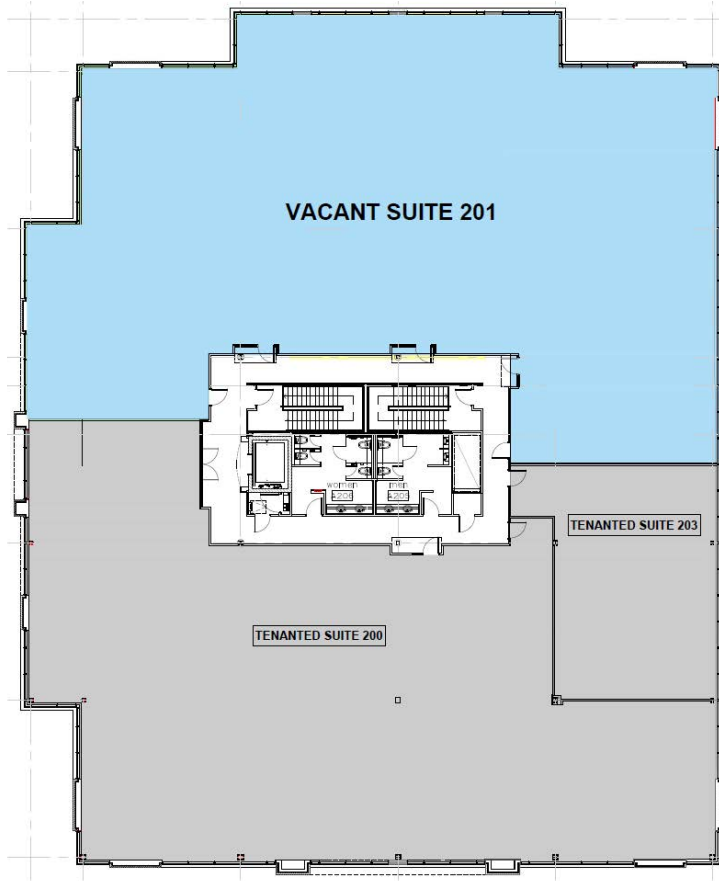


### Occupancy

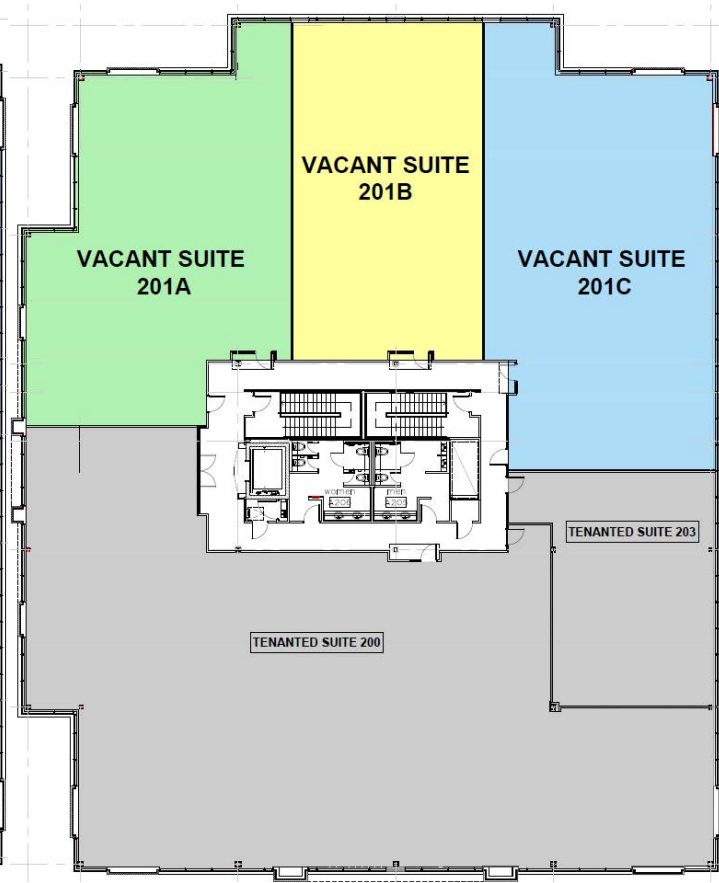
Immediate



[Click to View Virtual Tour](#)



**Current Availabilities**



**Demised Availabilities**

# 2315 Bristol Circle

## Availabilities



### Units

Suite 200: 6,447 Sq. Ft.

Suite 200A: 4,321 Sq. Ft.



Suite 200B: 2,342 Sq. Ft.

Suite 202: 4,438 Sq. Ft.



### Asking Net Rent

\$17.95 PSF



### Additional Rent

\$14.85

*Utilities and Janitorial Included*

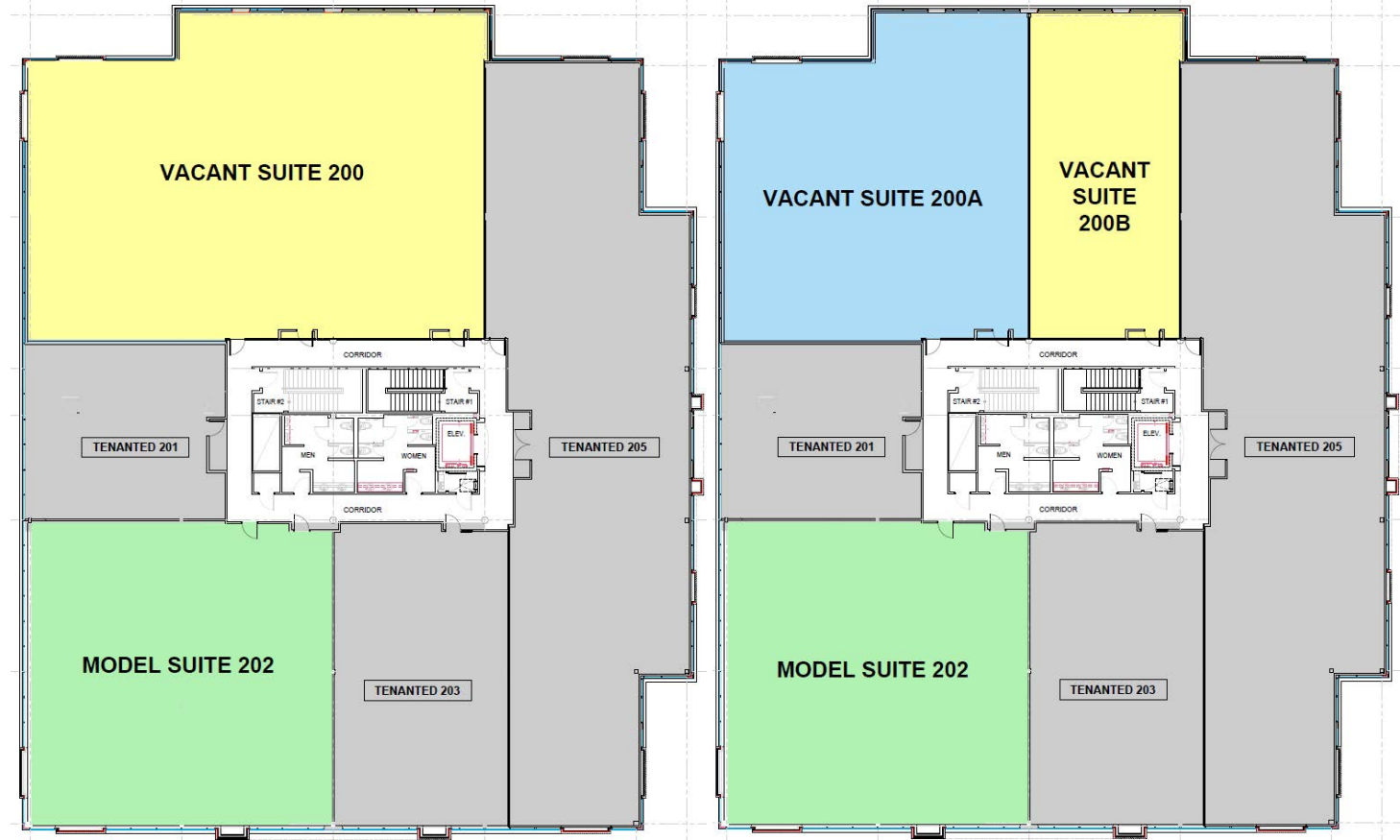


### Occupancy

Immediate



[Click to View Virtual Tour](#)



**Current Availabilities**

**Demised Availabilities**

# 2315 Bristol Circle

## Availabilities - Model Suite



### Available Unit

Suite 202



### Available Size

4,430 Sq. Ft.



### Asking Net Rent

\$17.95 PSF



### Additional Rent

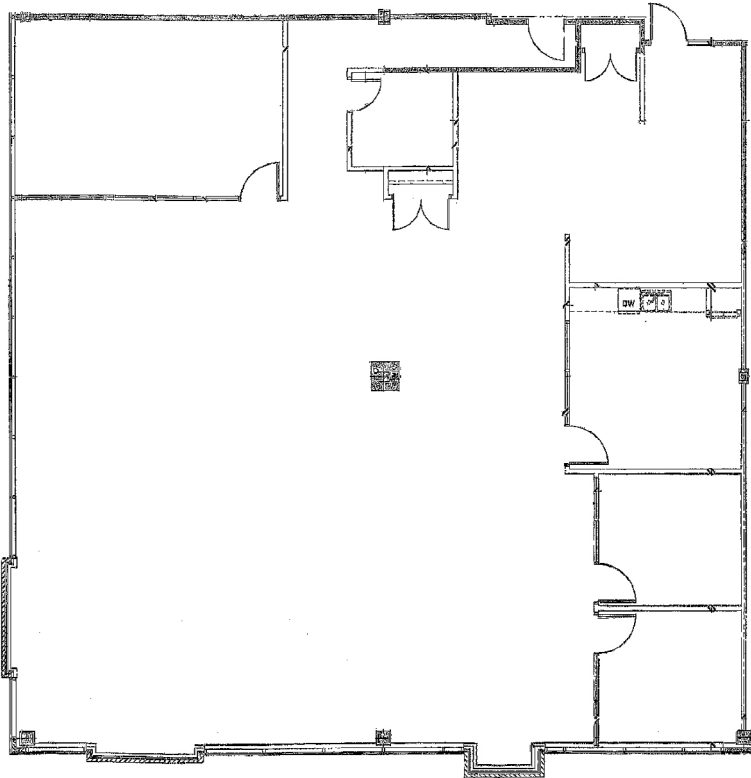
\$14.85

*Utilities and Janitorial Included*



### Occupancy

Immediate



# TEQ Corporate Centre

## 2295 & 2315 Bristol Circle

OAKVILLE | ON

### CONTACT US

#### Lindsay Sparks\*

Vice President  
905 315 3687  
lindsay.sparks@cbre.com

#### Kay Locke\*

Senior Vice President  
416 798 6268  
kay.locke@cbre.com

#### Kayla Parro\*

Sales Support Coordinator  
416 798 6285  
kayla.parro@cbre.com

#### Hajira Farooq\*

Transaction Manager  
416 798 6220  
hajira.farooq@cbre.com

This disclaimer shall apply to CBRE Limited, Real Estate Brokerage, and to all other divisions of the Corporation; to include all employees and independent contractors ("CBRE"). The information set out herein, including, without limitation, any projections, images, opinions, assumptions and estimates obtained from third parties (the "Information") has not been verified by CBRE, and CBRE does not represent, warrant or guarantee the accuracy, correctness and completeness of the Information. CBRE does not accept or assume any responsibility or liability, direct or consequential, for the Information or the recipient's reliance upon the Information. The recipient of the Information should take such steps as the recipient may deem necessary to verify the Information prior to placing any reliance upon the Information. The Information may change and any property described in the Information may be withdrawn from the market at any time without notice or obligation to the recipient from CBRE. CBRE and the CBRE logo are the service marks of CBRE Limited and/or its affiliated or related companies in other countries. All other marks displayed on this document are the property of their respective owners. All Rights Reserved. Mapping Sources: Canadian Mapping Services [canadamapping@cbre.com](mailto:canadamapping@cbre.com); DMTI Spatial, EnviroNics Analytics, Microsoft Bing, Google Earth



**CBRE**