

FOR LEASE → ±3,345 SF DOWNTOWN RETAIL AVAILABLE

2033-39 Broadway Street

Redwood City, California



HIGHLIGHTS

- Amazing location in downtown RWC
- Short walk to CalTrain
- ±3,345 SF Retail
- Surrounded by over 150,000 SF of new office development
- Heavy foot traffic
- Located next to large public parking lot and across from public parking garage
- New and upgraded power (3 phase 200amp/208v)
- Surrounded by new and existing restaurants

LEASE RATE

- \$3.85 PSF NNN

CONTACTS

Anthony Kamm

akamm@seq-rs.com

650.556.8668

CAL DRE LIC NO. 01783456

Ryan Pegnim

rpegnim@seq-rs.com

650.556.8672

CAL DRE LIC NO. 01478696

Corey Rostad

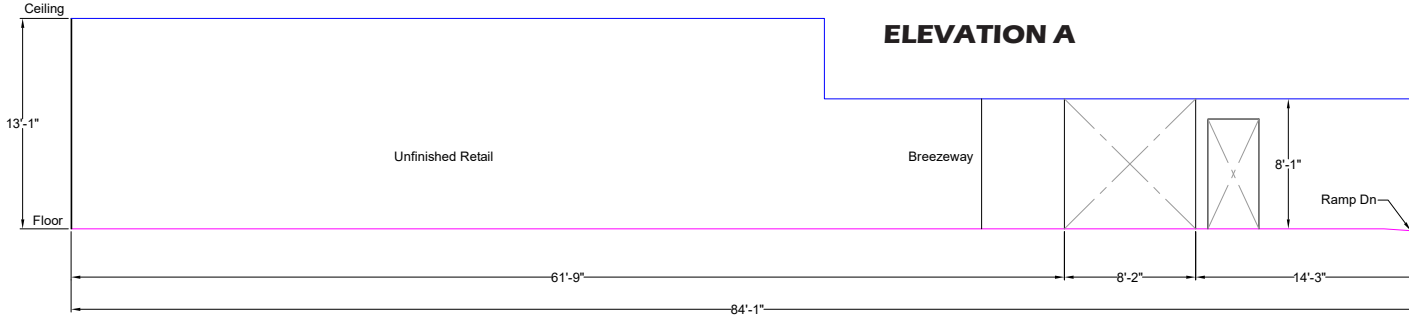
crostad@seq-rs.com

650.556.8669

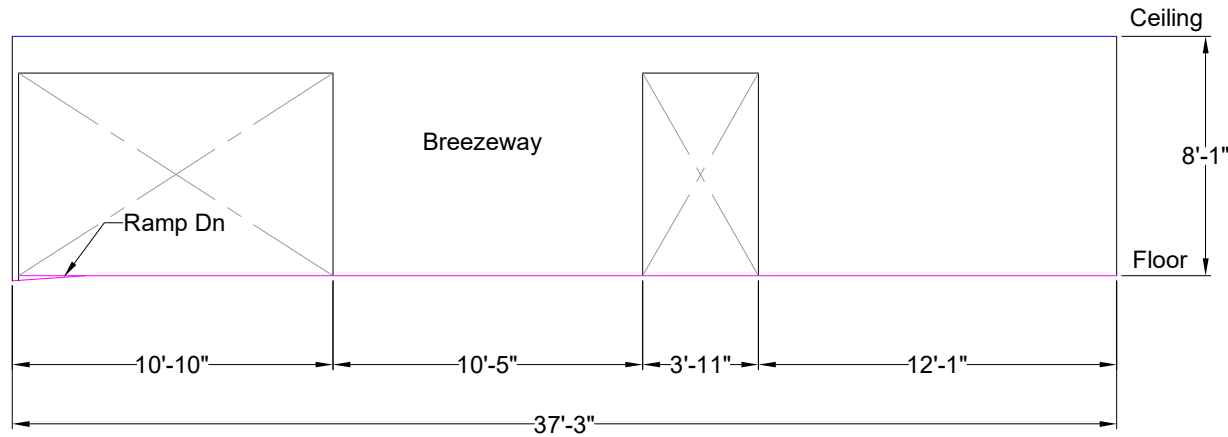
CAL DRE LIC NO. 01991879

FOR LEASE → ±3,345 SF DOWNTOWN RETAIL AVAILABLE

2033-39 Broadway Street, Redwood City



ELEVATION B



CONTACTS

Anthony Kamm
akamm@seq-rs.com
650.556.8668
CAL DRE LIC NO. 01783456

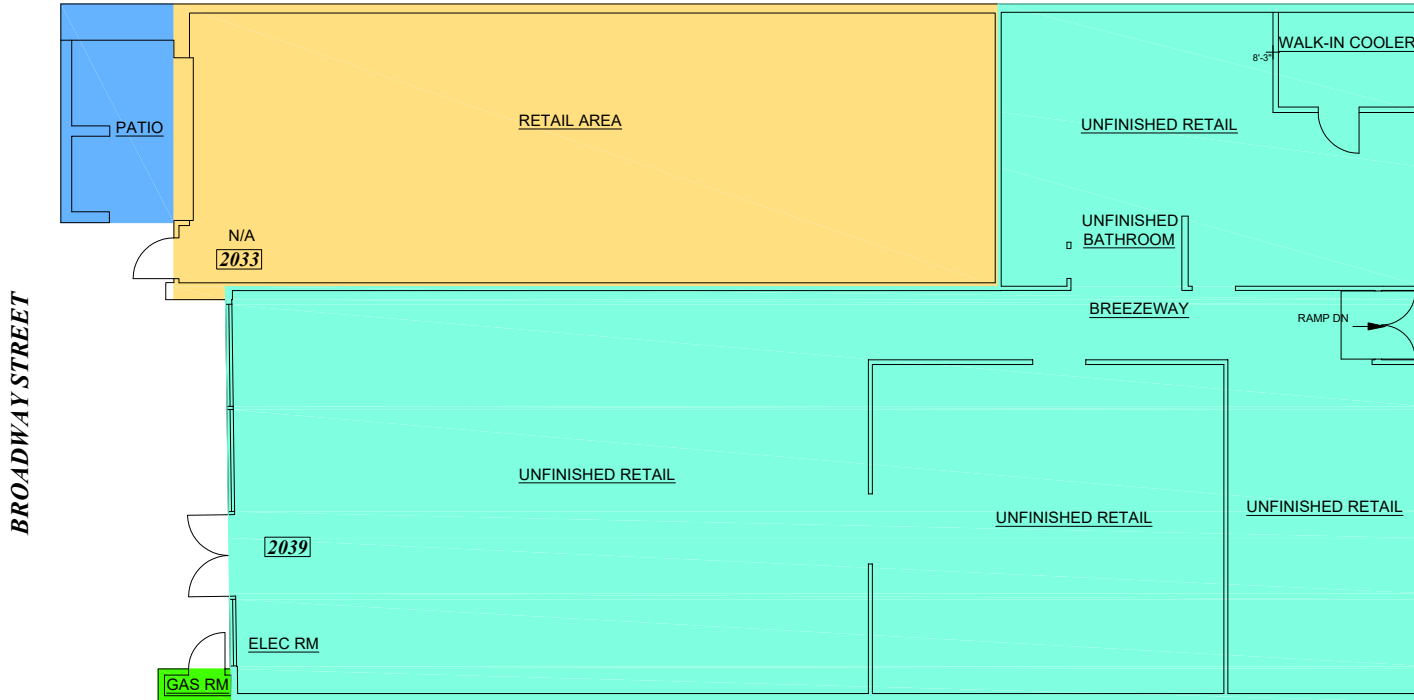
Ryan Pegnim
rpegnim@seq-rs.com
650.556.8672
CAL DRE LIC NO. 01478696

Corey Rostad
crostad@seq-rs.com
650.556.8669
CAL DRE LIC NO. 01991879



FOR LEASE → ±3,345 SF DOWNTOWN RETAIL AVAILABLE

2033-39 Broadway Street, Redwood City



COLOR LEGEND

	Measured areas, descriptions
	Unused
	Computed values

Occup ID	GLA	Mezzanines	RHA	Ancillary
2033	1,265.4			133.9
2039	3,345.2			

		WITHIN EXTERIOR GROSS AREA					DISCLOSE WITHIN GLA					
A1	A2	B	C	D	E	F	G	H	I	J	K	L
Input	Input	Measure	Measure	=B - C	Measure	=C - E	Measure	Measure	=F - G - H	Measure	Measure	Measure
Floor Level	Occupant ID	Construction Gross Area CGA	Exterior Gross Area EGA	Unenclosed Area	Parking Area	Retail EGA	Gross Leasable Area GLA	Common Area	Non-Leasable Area	Mezzanines (Disclose)	Restricted Headroom (Disclose)	Ancillary Areas
1	2033 2039	4,624	4,624				1,265 3,345					134
Floor Totals		4,624	4,624	1		4,624	4,611	13				134
BLDG TOTALS		4,624	4,624	1		4,624	4,611	13				134

CONTACTS

Anthony Kamm
 akamm@seq-rs.com
 650.556.8668
 CAL DRE LIC NO. 01783456

Ryan Pegnim
 rpegnim@seq-rs.com
 650.556.8672
 CAL DRE LIC NO. 01478696

Corey Rostad
 crostad@seq-rs.com
 650.556.8669
 CAL DRE LIC NO. 01991879