

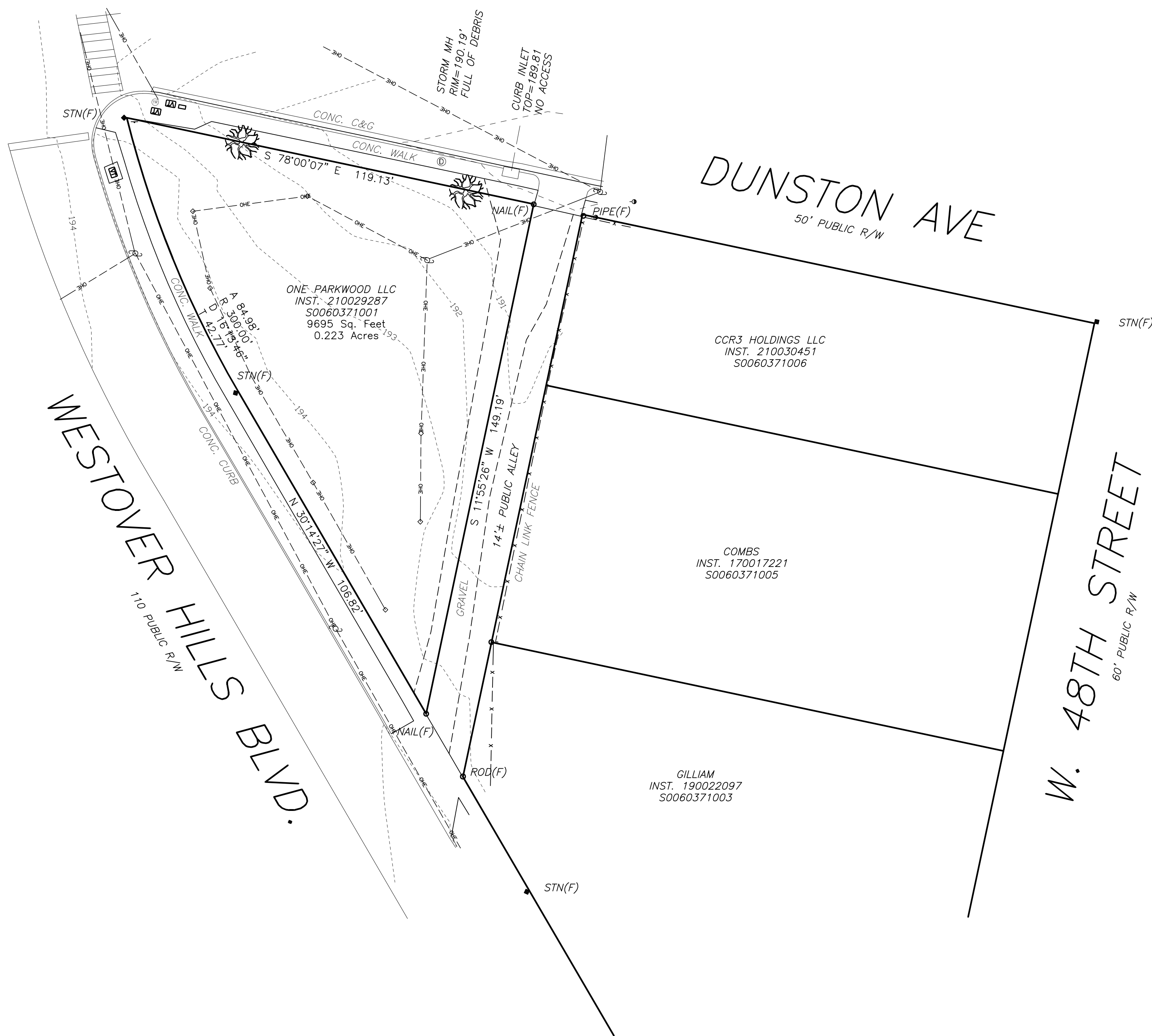
LEGEND

- ◇ WOOD POST
- ⊗ TREE
- ⊙ STORM MH
- ⊕ UTILITY POLE
- SIGN
- ⊞ COM. VAULT
- ⊙ TRAFFIC POLE

SURVEY CONTROL

POINT	NORTHING	EASTING	ELEV.	DESC.
1	3714053.28	11776258.99	193.78	CP NAIL
2	3714050.48	11776155.31	194.96	CP NAIL
3	3713958.36	11776217.22	194.21	CP NAIL

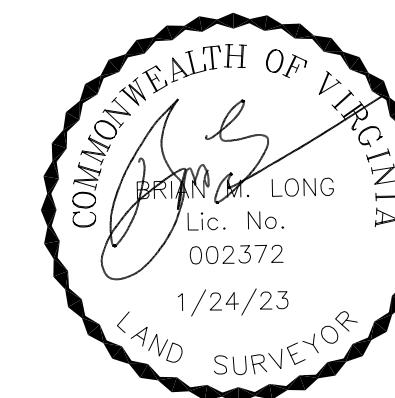
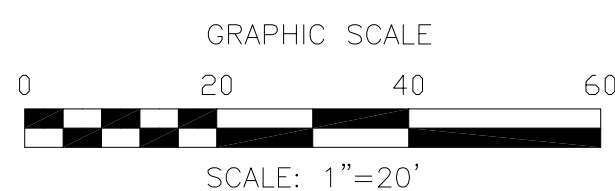
DATUM:
HORZ: NAD 83
VERT: NAVD 88



THIS TOPOGRAPHIC SURVEY WAS COMPLETED UNDER THE DIRECT AND RESPONSIBLE CHARGE OF BRIAN M LONG FROM AN ACTUAL GROUND SURVEY MADE UNDER MY SUPERVISION; THAT THE IMAGERY AND/OR ORIGINAL DATA WAS OBTAINED JANUARY 24, 2023; AND THAT THIS PLAT, MAP, OR DIGITAL GEOSPATIAL DATA INCLUDES METADATA MEETS MINIMUM ACCURACY STANDARDS UNLESS OTHERWISE NOTED.

REGISTRATION NO. 2372

1/24/23
DATE



TOPOGRAPHIC SURVEY OF 105 WESTOVER HILLS BLVD.

CITY OF RICHMOND ~ VIRGINIA

DATE: JANUARY 24, 2023

JENNINGSTEPHENSON, P.C. 10160 STAPLES MILL ROAD
SUITE 103
GLEN ALLEN, VA 23060
PHONE — 804-545-6235
FAX — 804-545-6259

LAND SURVEYORS
& PLANNERS

DRAWN BY: CHECKED BY: