

FOR LEASE

2664 BERRYESSA ROAD

San Jose, CA | BERRYESSA PROFESSIONAL CENTER

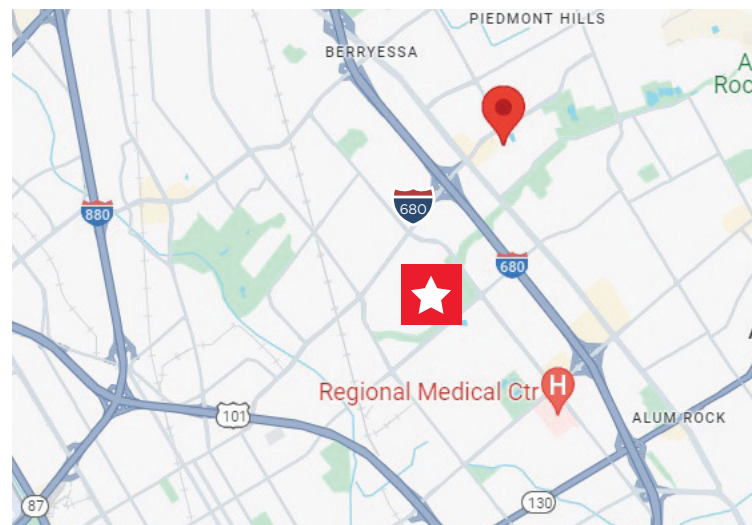


DENTAL/MEDICAL OFFICES FOR LEASE!

- Suite 205 ±981 SF - Available Now
- Suite 202 ±1,308 SF - Available Now
- Suite 112 ±1,535 SF - Available Now

PROPERTY HIGHLIGHTS:

- All Medical Professionals Welcome!
- Plumbed Dental Suites Perfect for New and Established Medical Professionals
- Centralized Vacuum and Compressed Air Provided for All Dental Suites
- Suites Have Efficient Floor Plans with Patios, Balconies and/or Strong Window Lines
- Walk to Safeway, Chase, Bank of America and Other Retail Amenities
- ±30,683 SF Multi-tenant Medical Building with Lobby and Common Area Upgrades Underway
- Ample Parking
- Elevator Served
- Strong Demographics
- Prime Location in Close Proximity to Hwy-680



For more information, contact:

MIKI CORREA
Senior Director
+1 408 642 0826
miki.correa@cushwake.com
LIC #01718959

300 Santana Row, Fifth Floor
San Jose, CA
Main +1 408 615 3400

cushmanwakefield.com

FOR LEASE

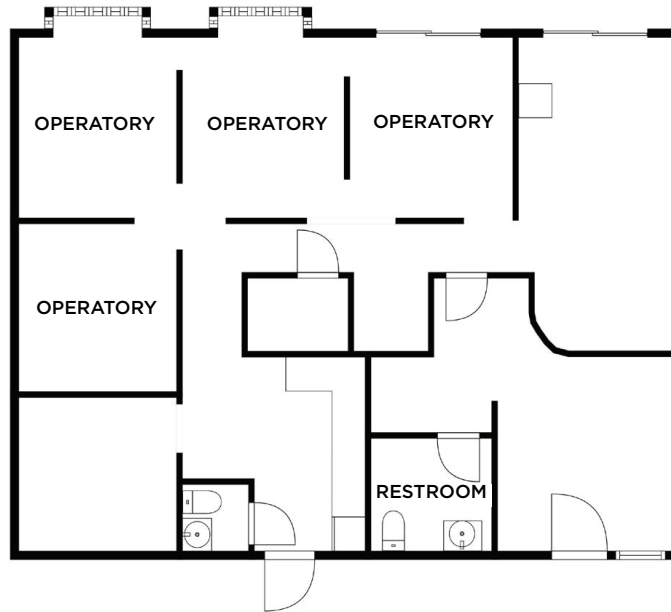
2664 BERRYESSA ROAD

San Jose, CA | BERRYESSA PROFESSIONAL CENTER

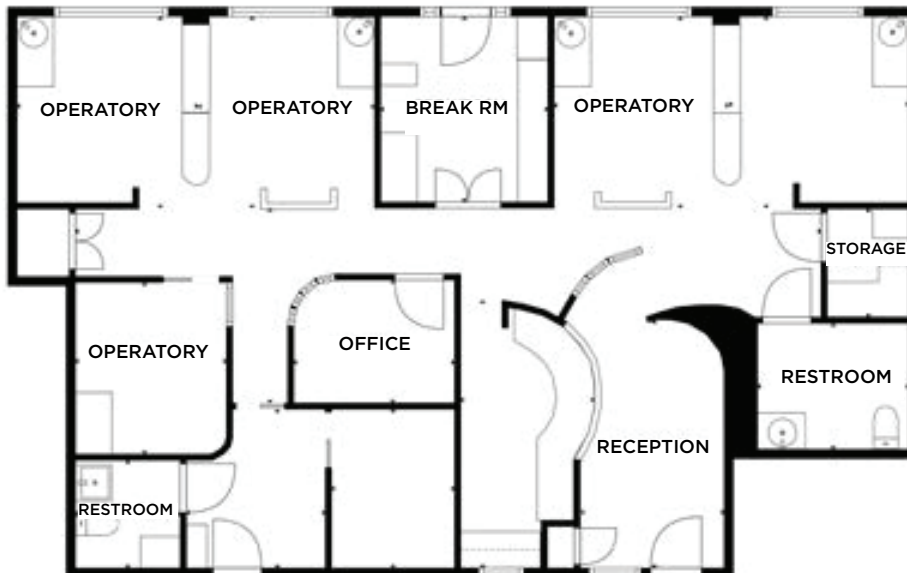


FLOOR PLANS

- Suite 202 ±1,308 SF - Available Now



- Suite 112 ±1,535 SF - Available Now



MIKI CORREA
Senior Director
+1 408 642 0826
miki.correa@cushwake.com
LIC #01718959

300 Santana Row, Fifth Floor
San Jose, CA
Main +1 408 615 3400

cushmanwakefield.com

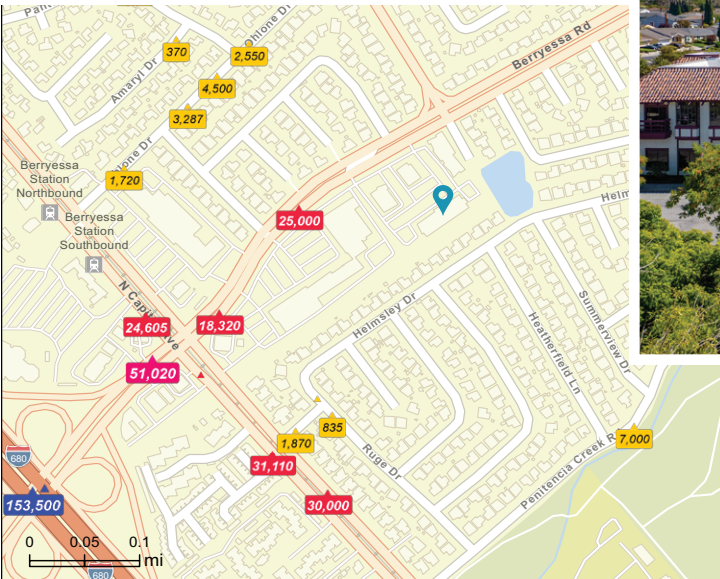
FOR LEASE

2664 BERRYESSA ROAD

San Jose, CA | BERRYESSA PROFESSIONAL CENTER



PHOTOS



DEMOS	1 MILE	3 MILES	5 MILES
POPULATION	30,270	179,547	239,017
AVERAGE HHI	\$197,362	\$179,150	\$175,762
HOUSEHOLDS	8,950	54,085	77,216

MIKI CORREA
 Senior Director
 +1 408 642 0826
 miki.correa@cushwake.com
 LIC #01718959

300 Santana Row, Fifth Floor
 San Jose, CA
 Main +1 408 615 3400

cushmanwakefield.com

HIGH TRAFFIC COUNTS (ADT)

BERRYESSA RD. 51,020 ADT

©2024 Cushman & Wakefield. All rights reserved. The information contained in this communication is strictly confidential. This information has been obtained from sources believed to be reliable but has not been verified. No warranty or representation, express or implied, is made as to the condition of the property (or properties) referenced herein or as to the accuracy or completeness of the information contained herein, and same is submitted subject to errors, omissions, change of price, rental or other conditions, withdrawal without notice, and to any special listing conditions imposed by the property owner(s). Any projections, opinions or estimates are subject to uncertainty and do not signify current or future property performance.

FOR LEASE

2664 BERRYESSA ROAD

San Jose, CA | BERRYESSA PROFESSIONAL CENTER



AERIAL/LOCATION MAP



MIKI CORREA
Senior Director
+1 408 642 0826
miki.correa@cushwake.com
LIC #01718959

300 Santana Row, Fifth Floor
San Jose, CA
Main +1 408 615 3400

cushmanwakefield.com