



SALE PRICE: UNDISCLOSED

# Barr Elementary School (Jackson Public Schools)

1593 W Capitol St, Jackson, MS 39203

Brian Estes, CCIM, CPM  
601.906.8999  
brian@estesgroup.net

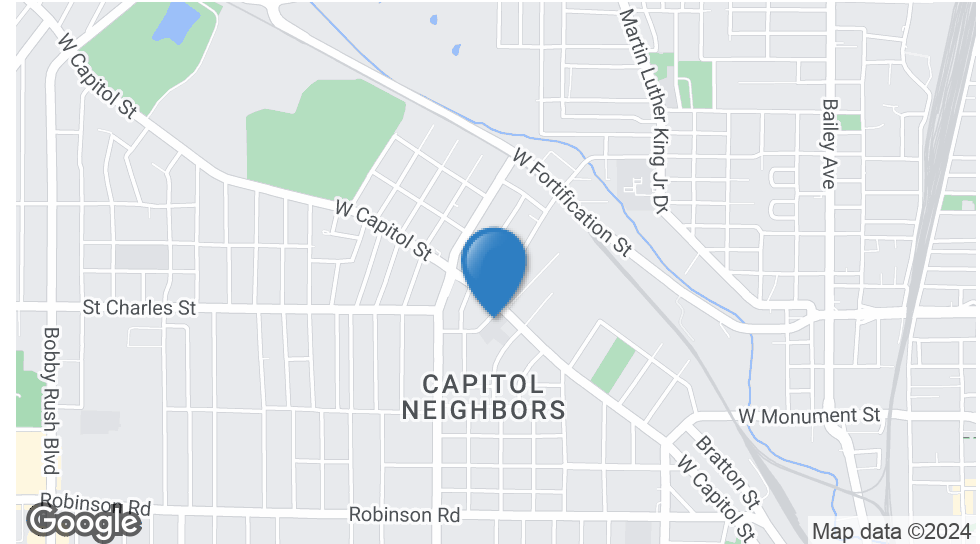
Jimmy Kitchens  
601.955.6434  
jimmy@estesgroup.net

Brian Chadwick  
601.573.2782  
bchadwick@estesgroup.net

PO Box 1220  
Madison, MS 39130  
601.362.9633  
estesgroup.net

# Barr Elementary School (Jackson Public Schools)

1593 W Capitol St, Jackson, MS 39203



## OFFERING SUMMARY

Sale Price:	Undisclosed
Building Size:	30,881 SF
Lot Size:	2.44 Acres
Zoning:	SUD (Special Use District)
Year Built:	1921

## PROPERTY OVERVIEW

2 Story Elementary School, formerly Barr Elementary (Jackson Public Schools).

This property is part of the JPS Repurposing Initiative. The initiative was created to help promote the reuse and redevelopment of the JPS surplus school sites. The primary goal is to spur redevelopment of surplus and undeveloped properties, ensuring that they are transformed into valuable assets that contribute to the growth and prosperity of Jackson's neighborhoods.



# Barr Elementary School (Jackson Public Schools)

1593 W Capitol St, Jackson, MS 39203



Brian Estes, CCIM, CPM  
601.906.8999  
brian@estesgroup.net

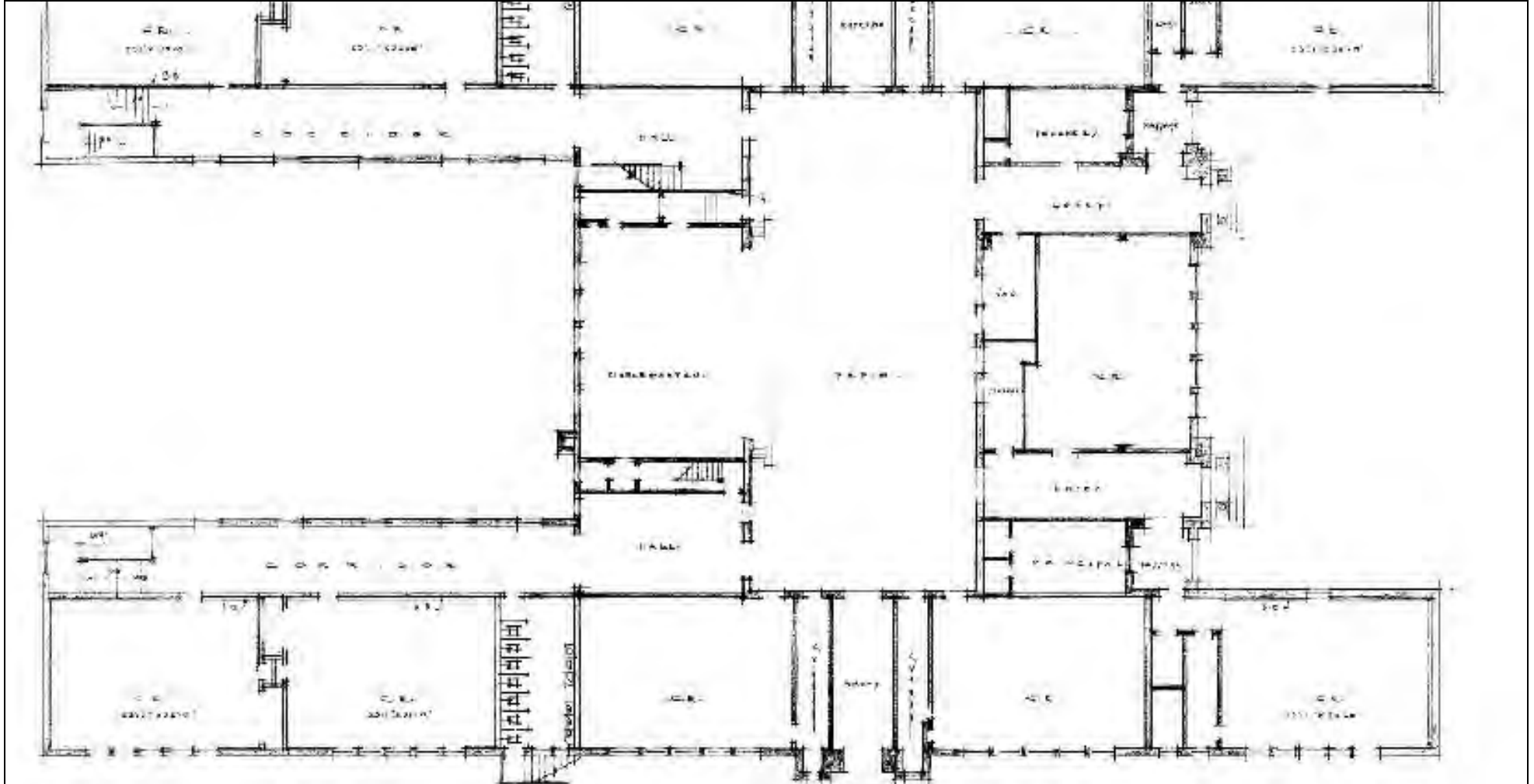
Jimmy Kitchens  
601.955.6434  
jimmy@estesgroup.net

Brian Chadwick  
601.573.2782  
bchadwick@estesgroup.net

PO Box 1220  
Madison, MS 39130  
601.362.9633  
estesgroup.net

# Barr Elementary School (Jackson Public Schools)

1593 W Capitol St, Jackson, MS 39203



Brian Estes, CCIM, CPM  
601.906.8999  
brian@estesgroup.net

Jimmy Kitchens  
601.955.6434  
jimmy@estesgroup.net

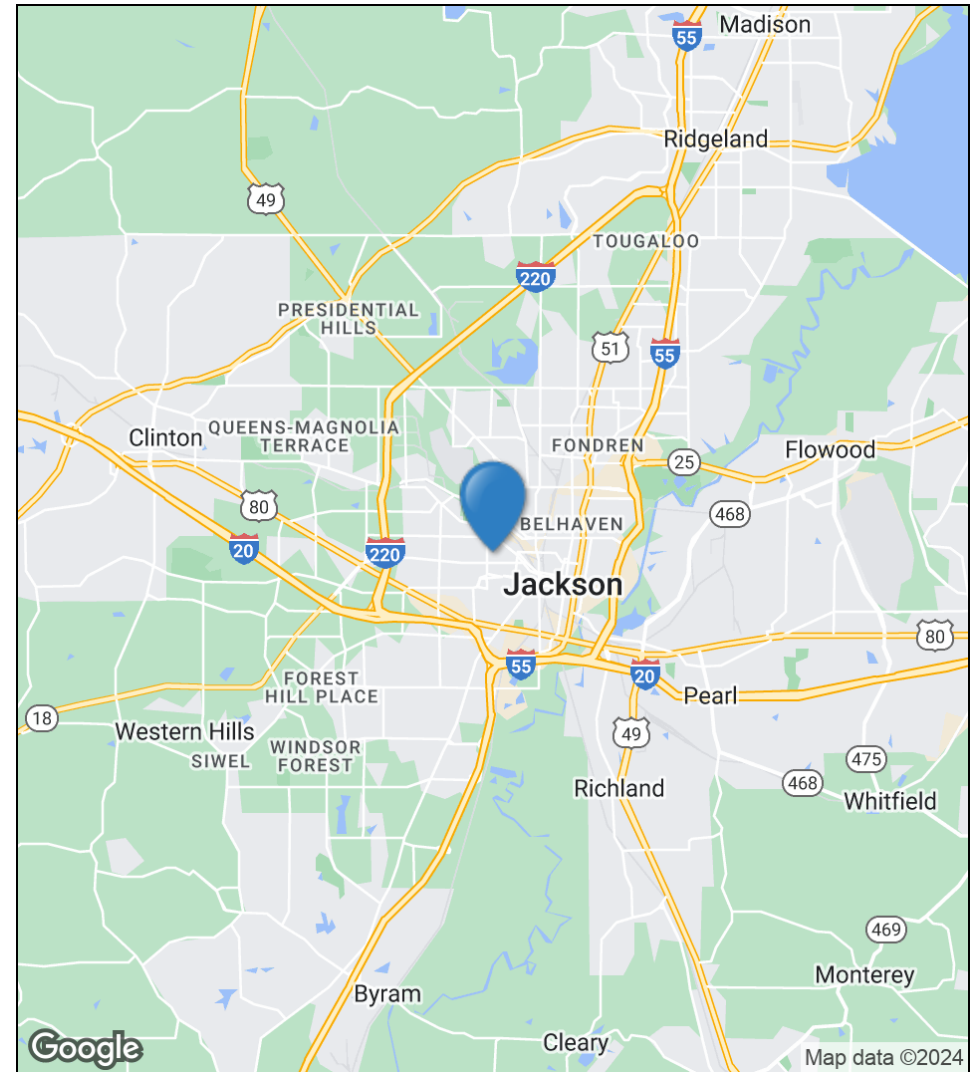
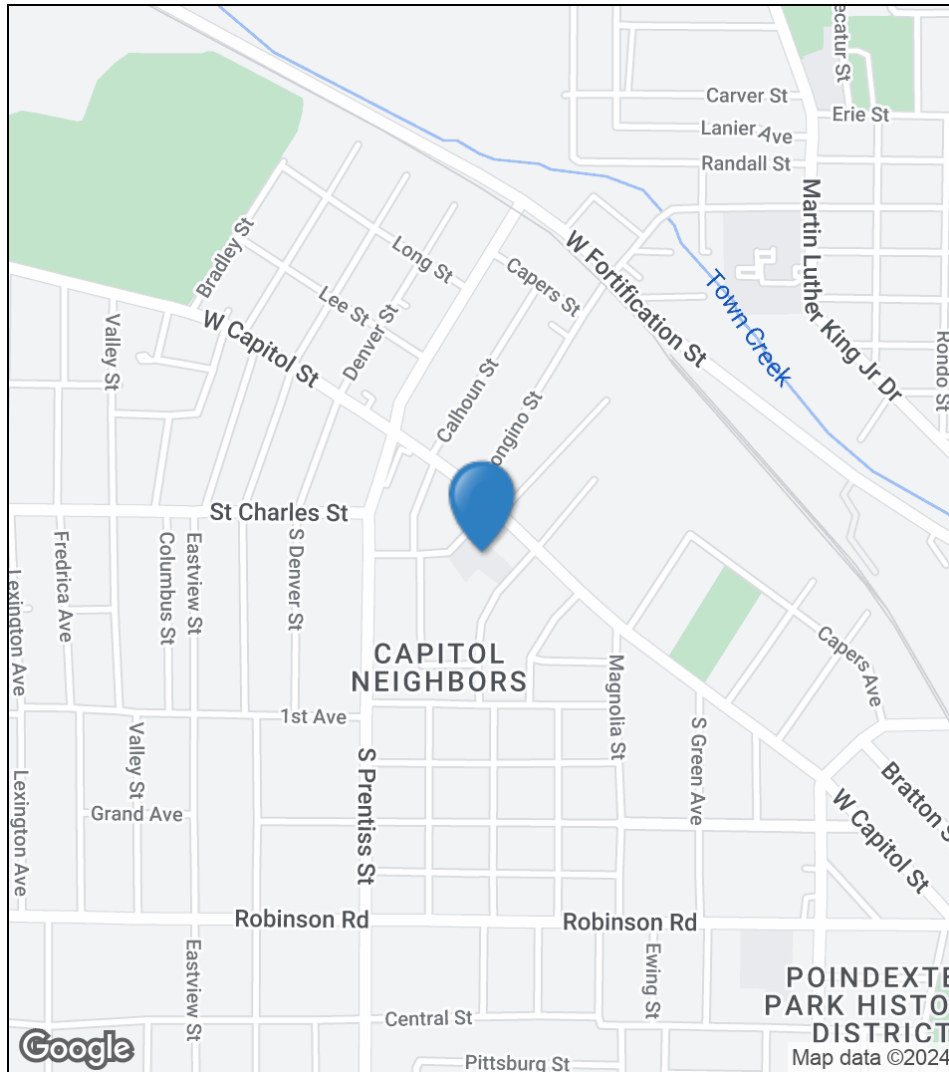
Brian Chadwick  
601.573.2782  
bchadwick@estesgroup.net

PO Box 1220  
Madison, MS 39130  
601.362.9633  
estesgroup.net



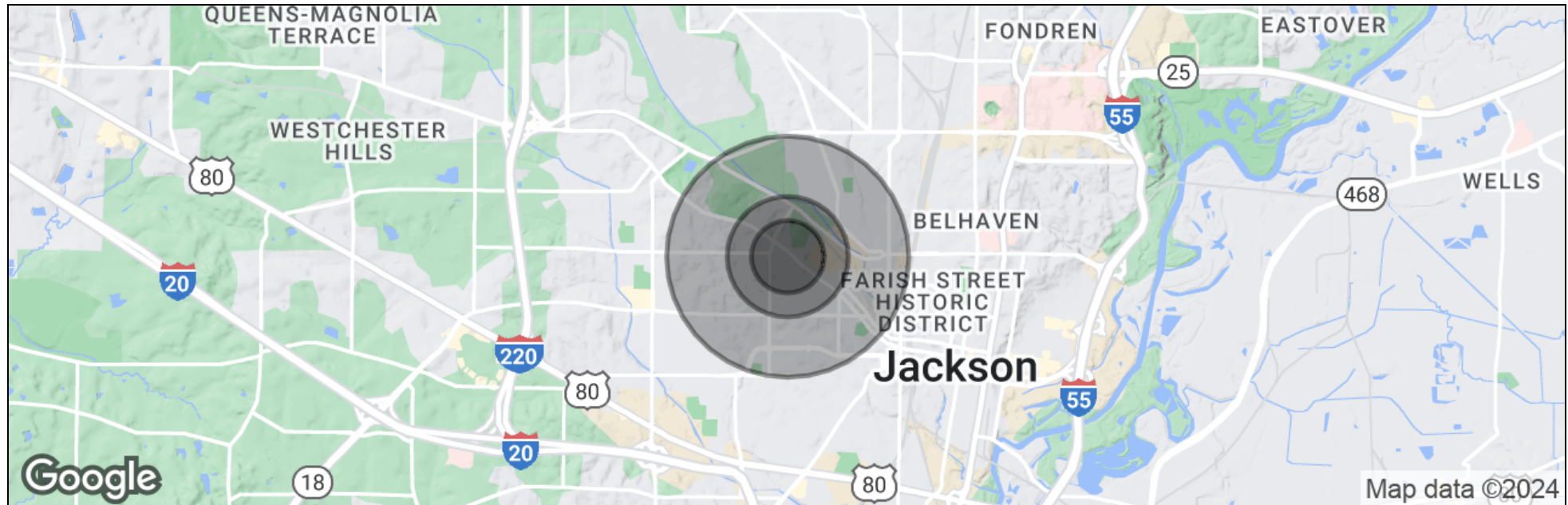
# Barr Elementary School (Jackson Public Schools)

1593 W Capitol St, Jackson, MS 39203



# Barr Elementary School (Jackson Public Schools)

1593 W Capitol St, Jackson, MS 39203



	0.3 Miles	0.5 Miles	1 Mile
Total Population	526	1,666	7,464
Population Density	1,860	2,121	2,376
Median Age	41	41	39
Median Age (Male)	40	40	38
Median Age (Female)	42	43	40
Total Households	245	756	2,924
# of Persons Per HH	2.1	2.2	2.6
Average HH Income	\$30,168	\$31,001	\$32,152
Average House Value	\$127,489	\$111,402	\$86,279

\* Demographic data derived from 2020 ACS - US Census