

3300

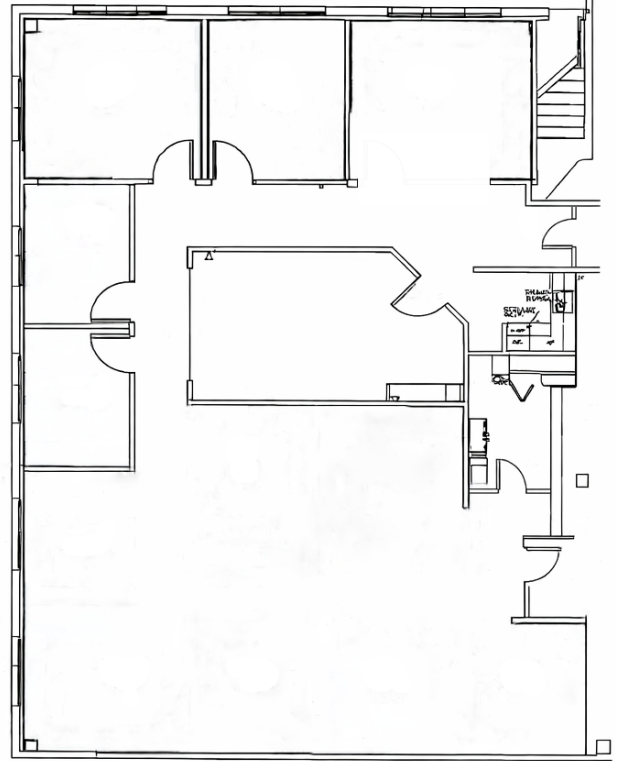
Olney Sandy Spring Rd.

Olney, Maryland 20832

Property Description

Well-located Class A office space in a three-story building in the heart of Olney. The property offers on-site amenities including property management, along with ample surface parking for tenants and visitors. Positioned near Georgia Avenue and the ICC, it provides seamless regional access and is surrounded by a strong mix of retail, dining, and residential amenities, with convenient proximity to major employment hubs in Montgomery County, Washington, D.C., and Baltimore.

Office Space For Lease



Suite 300 • 3,087 SF



- Space is currently built out for Physical Therapy Practice
- Can be used as office or another medical use
- The space can be divisible – Contact broker for more info.

Zoned CRT

Commercial Residential Town



For Leasing Opportunities:

Dave Edgerley

301.943.9762

dedgerley@scheerpartners.com

Larry Galey

240.277.1565

larrygaley@remax.net

301.337.4700

www.scheerpartners.com