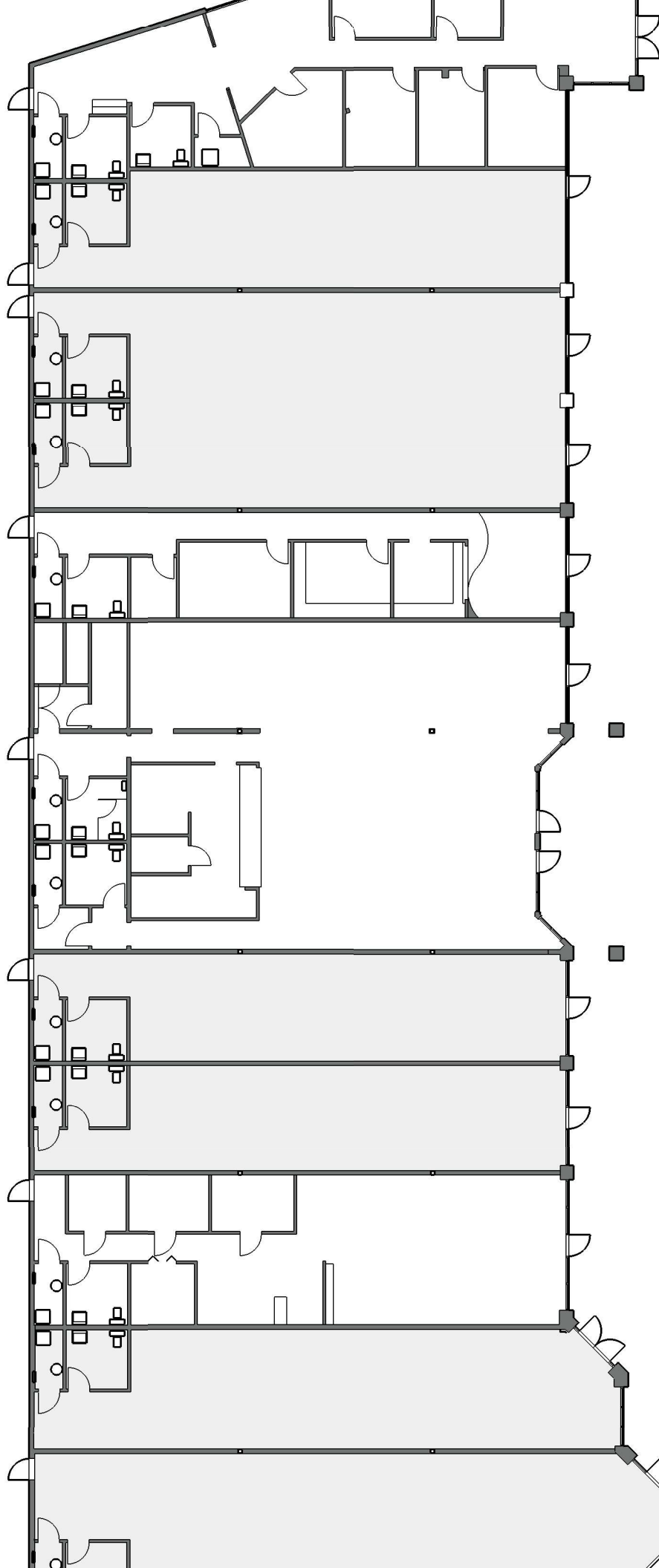
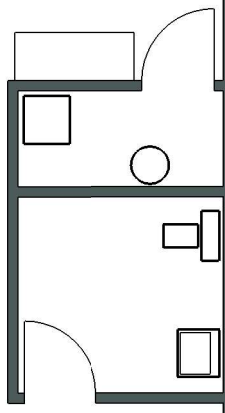


Office Building Plan

1" = 20'

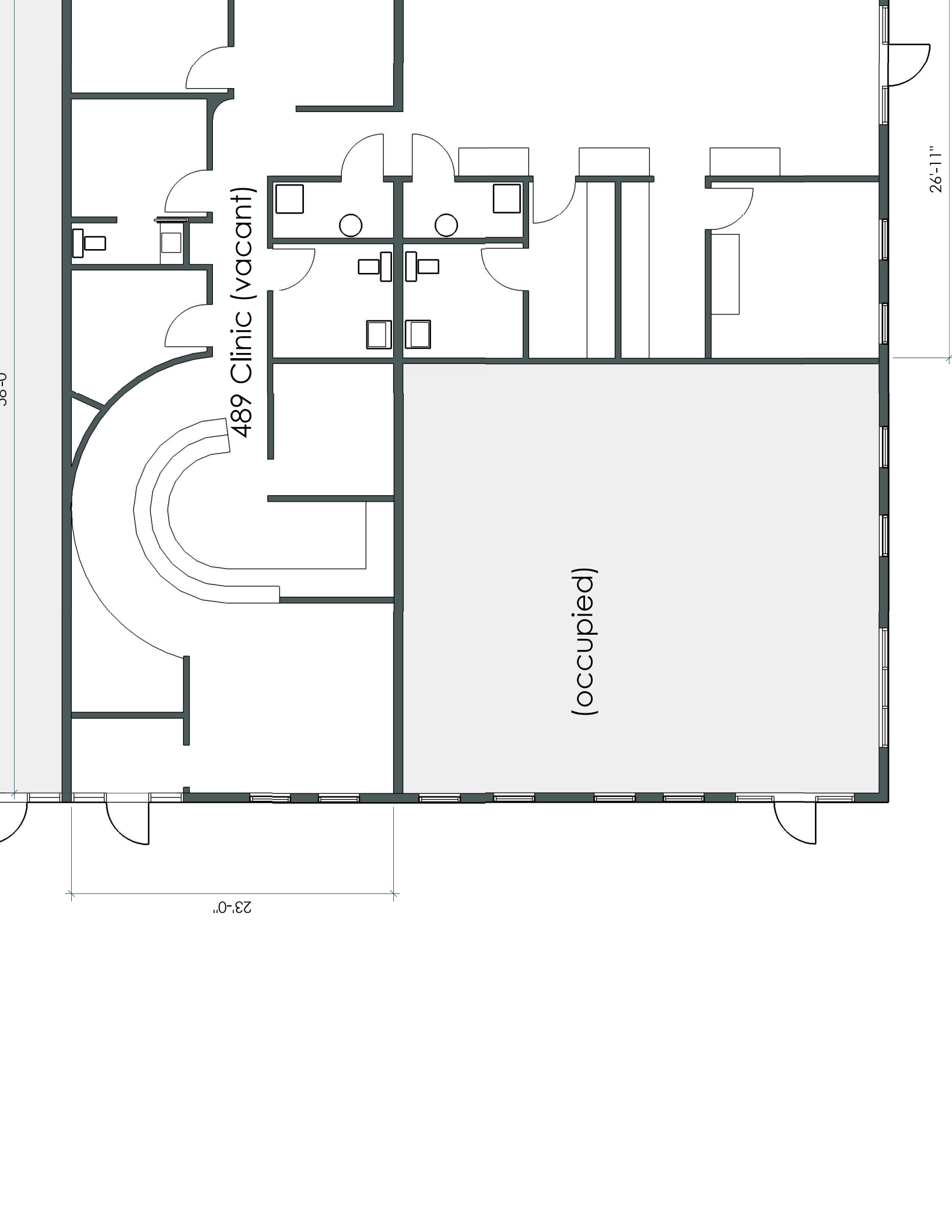


489 Open Office (vacant)



(occupied)





489 Clinic (vacant)

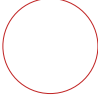
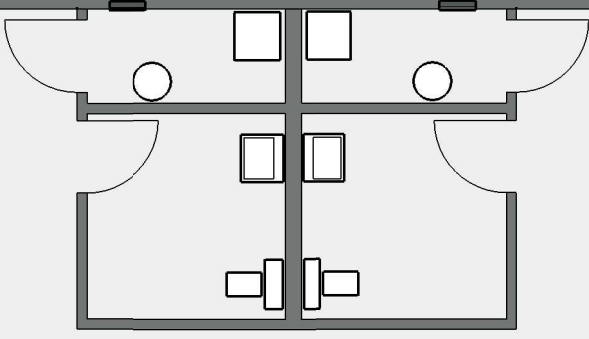
(occupied)

23'-0"

26'-11"

30'-0"

403  
Daycare Center  
(occupied)

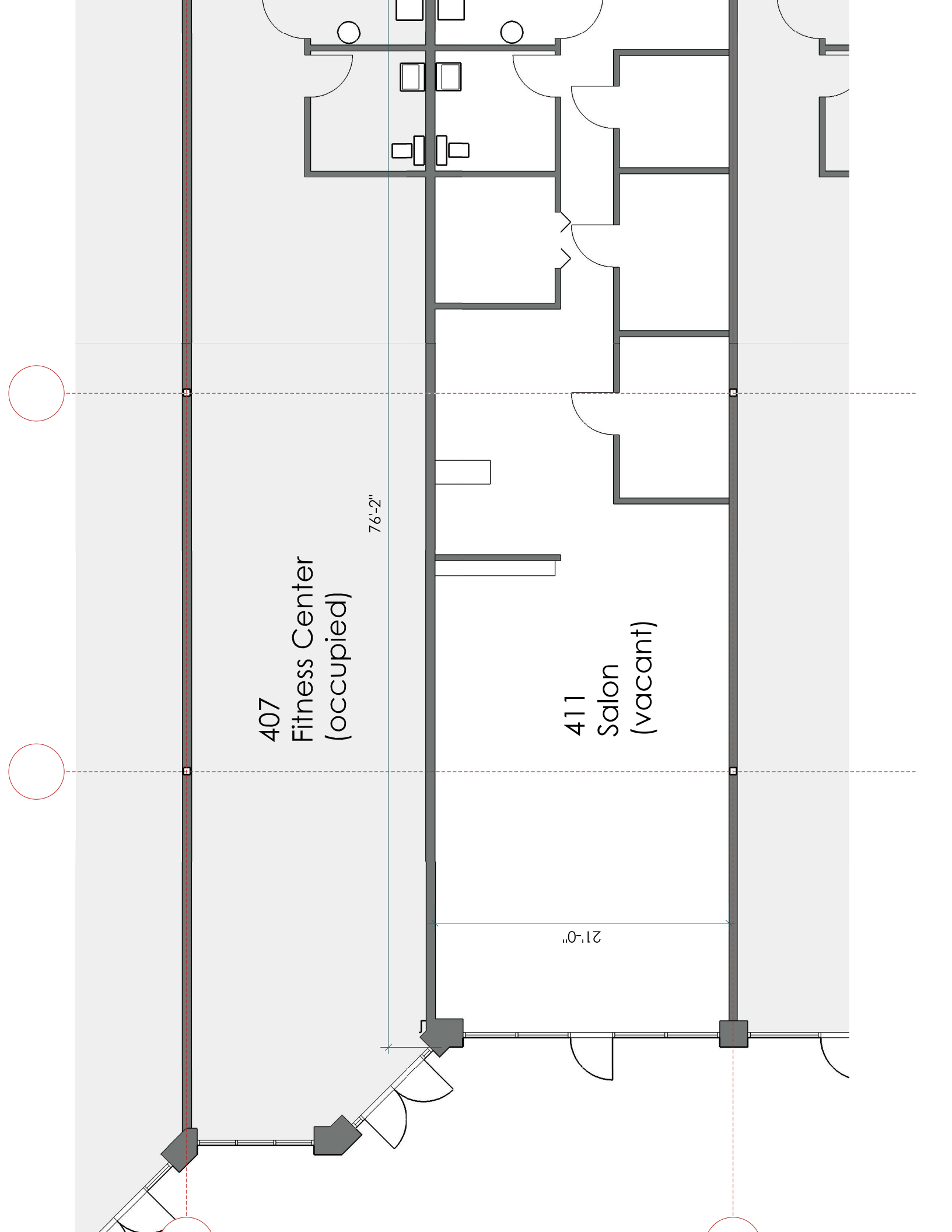


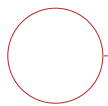
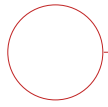
407  
Fitness Center  
(occupied)

76'-2"

411  
Salon  
(vacant)

21'-0"

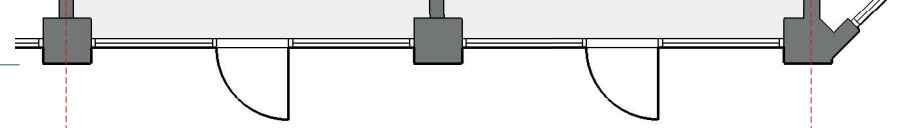
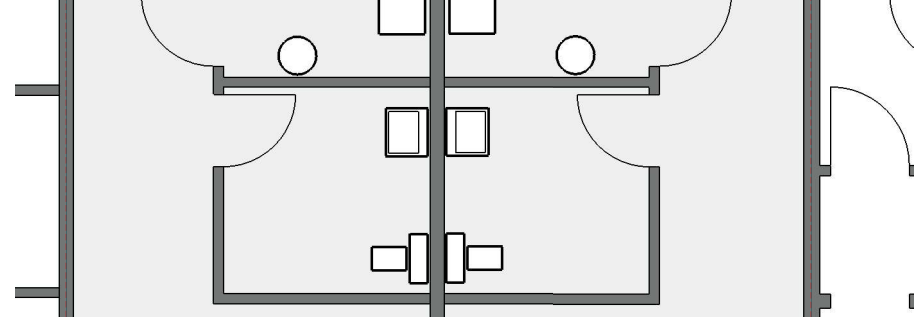




76'-3"

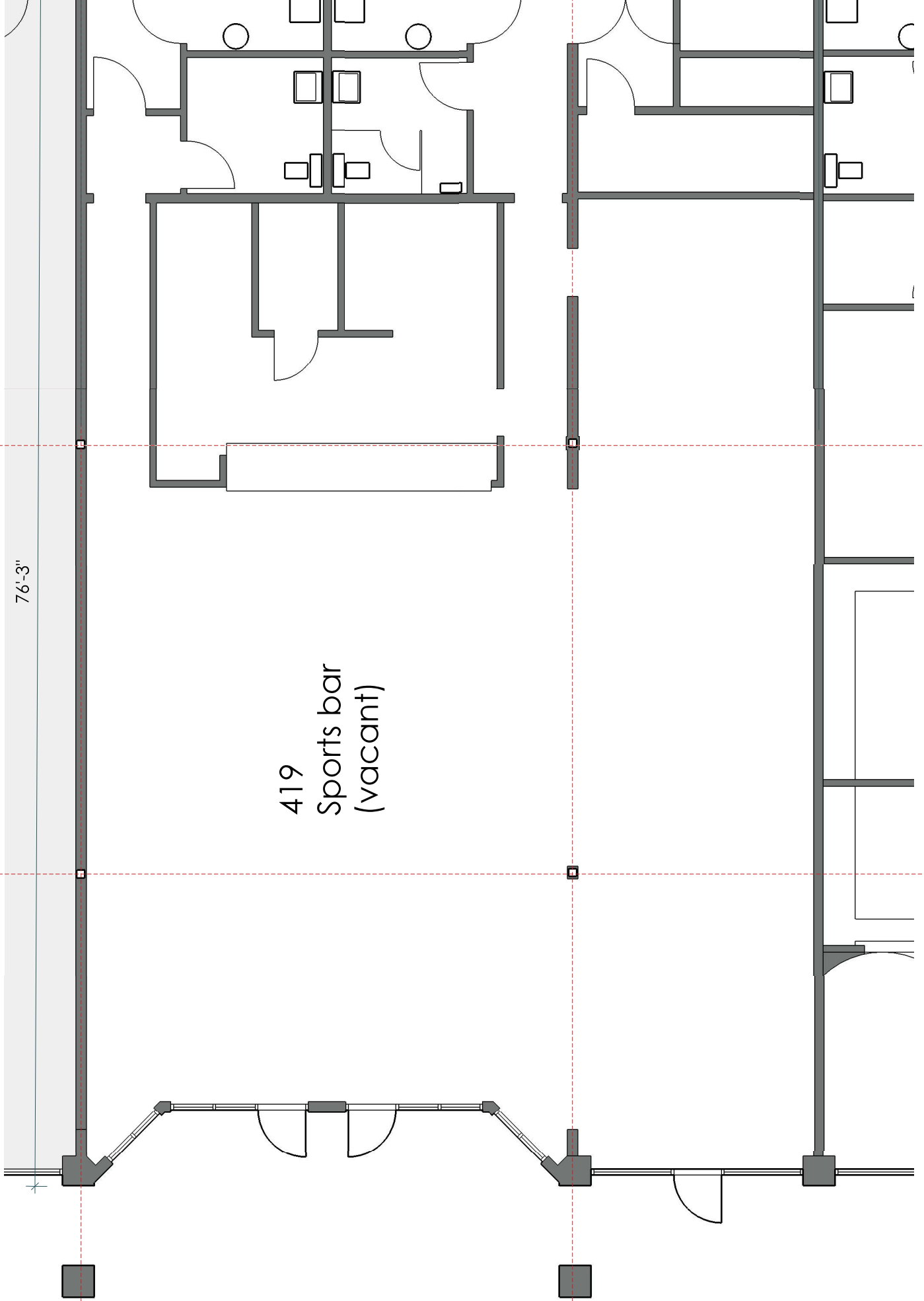
415  
Massage Therapy  
(occupied)

417  
Sports Medicine  
(occupied)



76'-3"

419  
Sports bar  
(vacant)

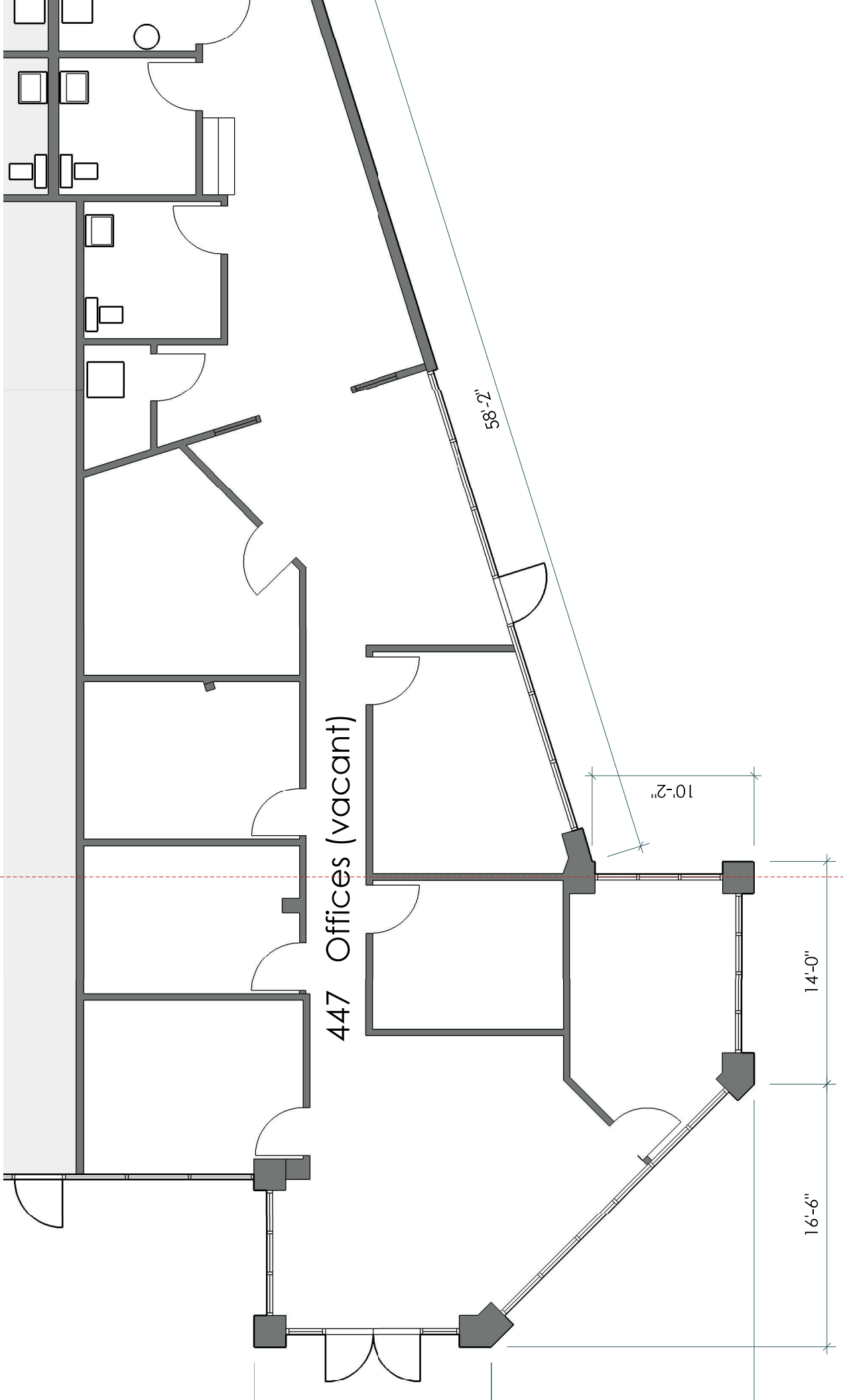


431  
H&R Block  
(occupied)

435  
Papa John's  
Pizza (occupied)

The floor plan shows a building layout with two large grey-shaded areas. The left grey area is labeled '431 H&R Block (occupied)' and the right grey area is labeled '435 Papa John's Pizza (occupied)'. The plan includes various rooms, corridors, and furniture like desks and chairs. Two vertical red dashed lines mark the boundaries of the grey areas, and two horizontal red dashed lines cross the plan. The bottom edge shows a series of door openings.

435  
Papa John's  
Pizza (occupied)



447 Offices (vacant)

58'-2"

10'-2"

14'-0"

16'-6"