

FOR LEASE

Mahtomedi Professional

12 Long Lake Road #5, Mahtomedi, MN 55115



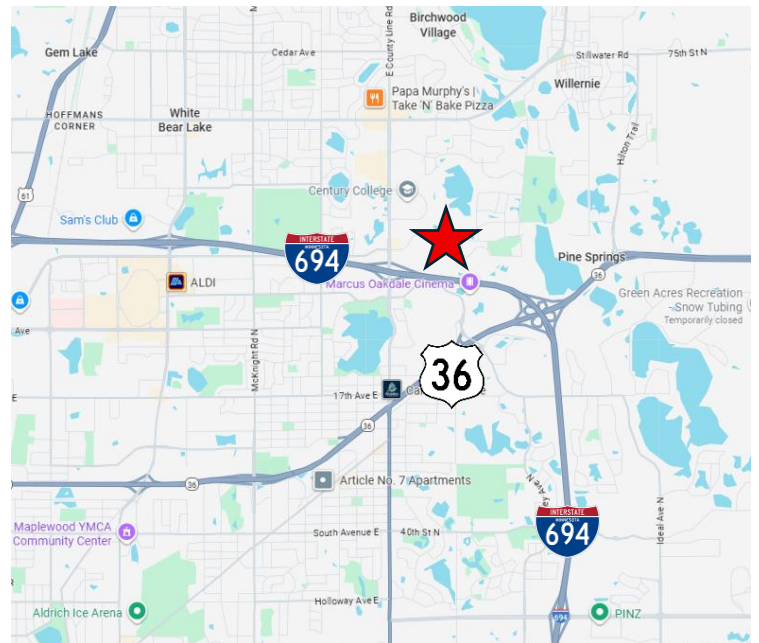
LISTING DETAILS

- Building Size: 6,000 SF
- Suites: 2,000-6,000 SF
- Base Rent: Negotiable
- 2026 CAM: \$4.27 PSF
- 2026 Taxes: \$4.70 PSF
- Utilities: Separately Metered

PROPERTY DETAILS

- Owner-User Opportunity
- Professional Office Park
- Wooded and Quiet Location off Long Lake Road
- Functional Build Out
- Easily split into 2 Suites (2,000 & 4,000 SF)

LOCATION



Mark Young

D: 651-233-2435 | M: 651-307-2371

Zac Houle

D: 651-209-0520 | M: 651-248-7567

Joseph Dokken

D: 651-363-3598 | M: 651-395-0948

7250 Hudson Boulevard N, Suite 160, Oakdale, MN 55128

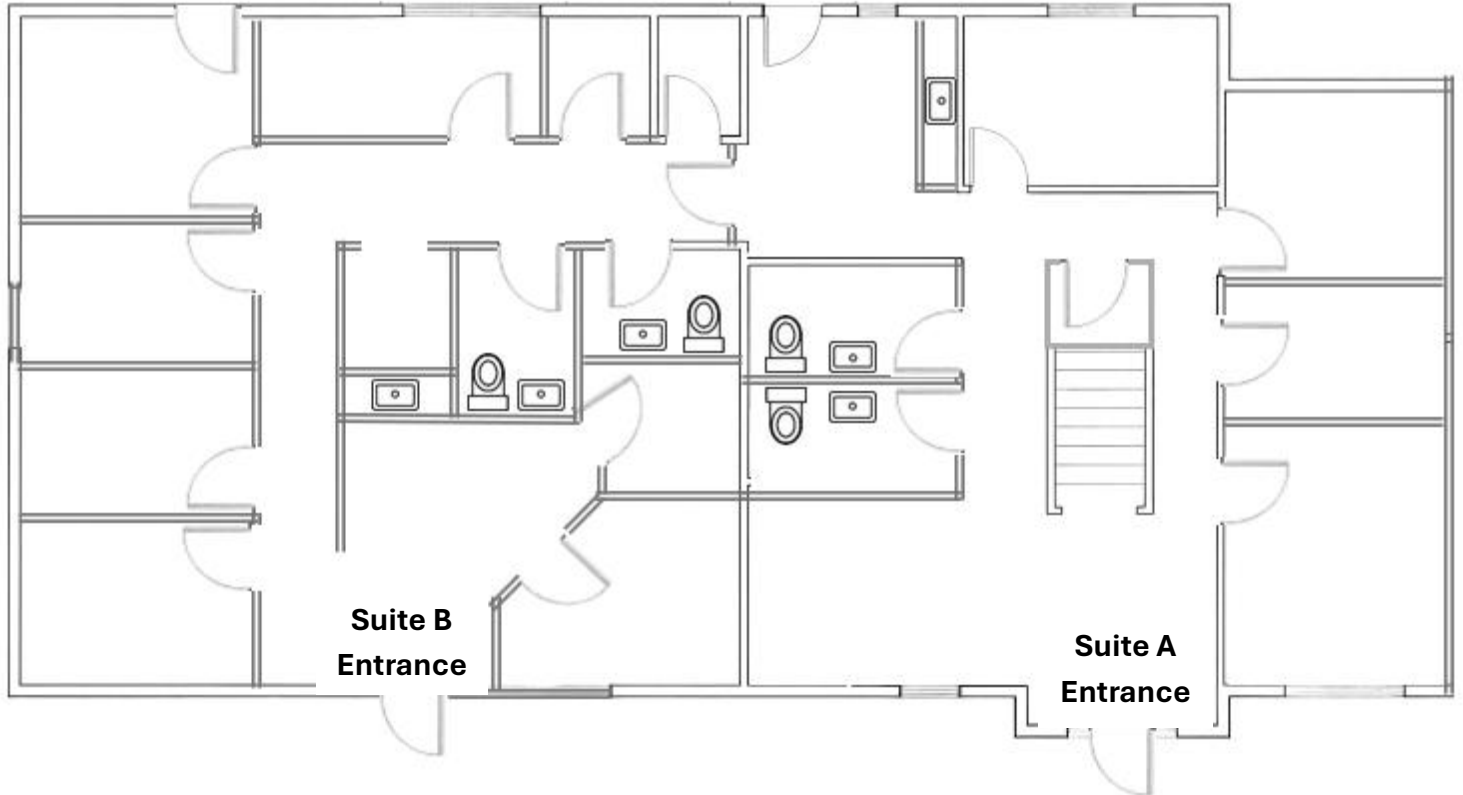
www.crossroadsproperties.net

FOR LEASE

Mahtomedi Professional

12 Long Lake Road #5, Mahtomedi, MN 55115

FLOOR PLAN – MAIN FLOOR (4,000 SF)



CROSSROADS
PROPERTIES

Mark Young

D: 651-233-2435 | M: 651-307-2371

Zac Houle

D: 651-209-0520 | M: 651-248-7567

Joseph Dokken

D: 651-363-3598 | M: 651-395-0948

7250 Hudson Boulevard N, Suite 160, Oakdale, MN 55128

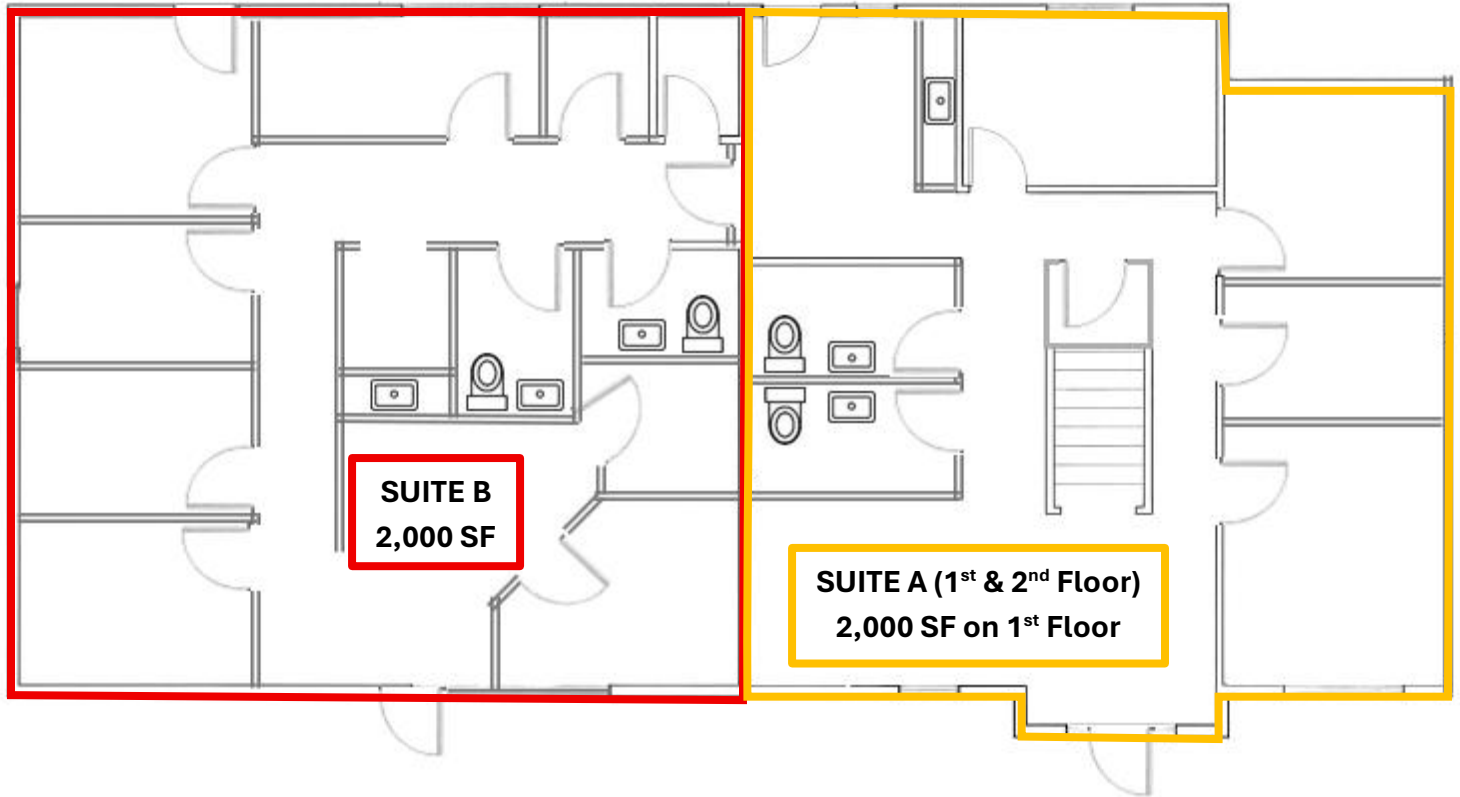
www.crossroadsproperties.net

FOR LEASE

Mahtomedi Professional

12 Long Lake Road #5, Mahtomedi, MN 55115

FLOOR PLAN – MAIN FLOOR DEMISABLE OPTIONS (2,000-4,000 SF)



**SUITE B
2,000 SF**

**SUITE A (1st & 2nd Floor)
2,000 SF on 1st Floor**

Suite B

- Conference Room
- Six Private Offices
- Reception Area
- Storage/Mechanical
- 2 Bathrooms
- Kitchenette

Suite A - 1st Floor

- Conference Room
- Three Private Offices
- Reception Area
- Two Bathrooms
- Break Area
- Storage Room



CROSSROADS
PROPERTIES

Mark Young

D: 651-233-2435 | M: 651-307-2371

Zac Houle

D: 651-209-0520 | M: 651-248-7567

Joseph Dokken

D: 651-363-3598 | M: 651-395-0948

7250 Hudson Boulevard N, Suite 160, Oakdale, MN 55128

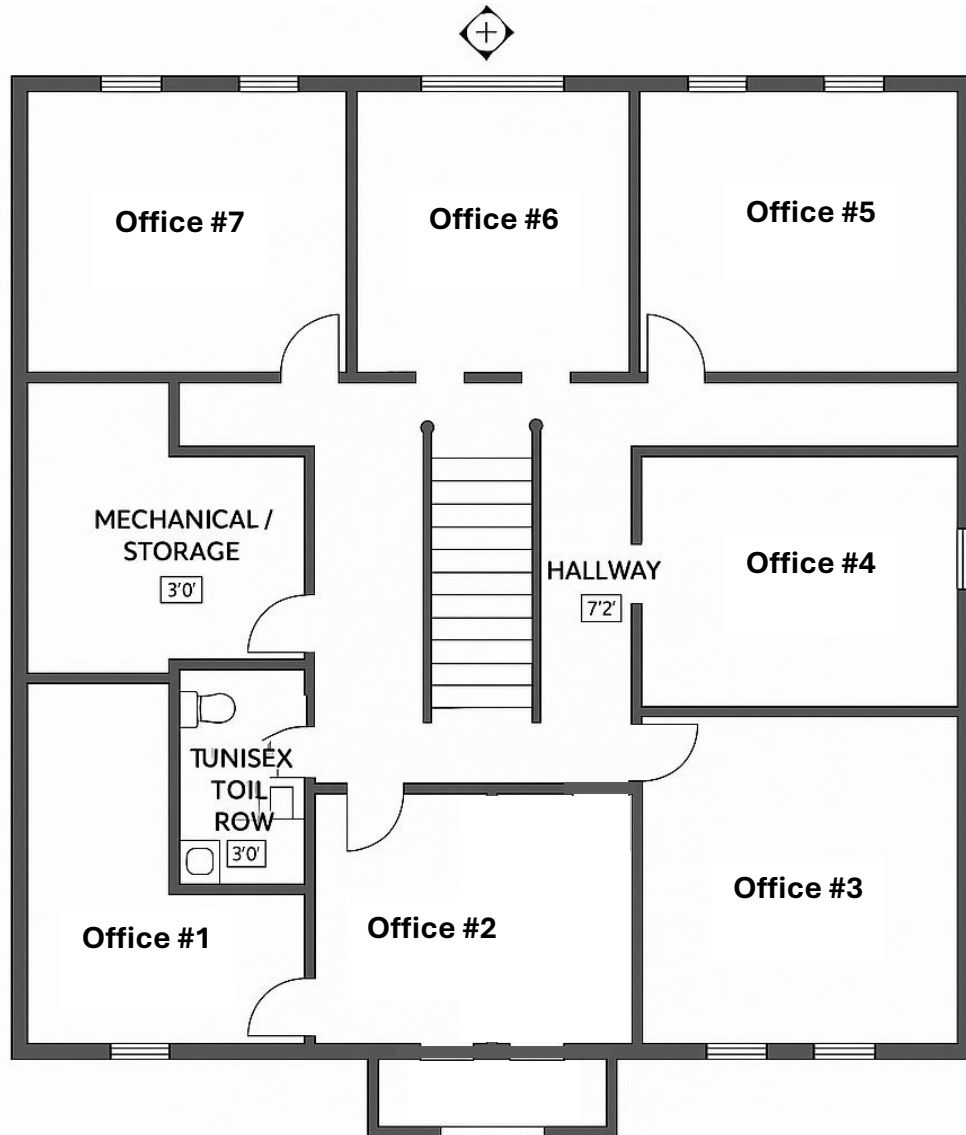
www.crossroadsproperties.net

FOR LEASE

Mahtomedi Professional

12 Long Lake Road #5, Mahtomedi, MN 55115

FLOOR PLAN – SECOND FLOOR (2,000 SF)



CROSSROADS
PROPERTIES

Mark Young

D: 651-233-2435 | M: 651-307-2371

Zac Houle

D: 651-209-0520 | M: 651-248-7567

Joseph Dokken

D: 651-363-3598 | M: 651-395-0948

7250 Hudson Boulevard N, Suite 160, Oakdale, MN 55128

www.crossroadsproperties.net

FOR LEASE

Mahtomedi Professional

12 Long Lake Road #5, Mahtomedi, MN 55115

LOCATION AERIAL



CROSSROADS
PROPERTIES

Mark Young

D: 651-233-2435 | M: 651-307-2371

Zac Houle

D: 651-209-0520 | M: 651-248-7567

Joseph Dokken

D: 651-363-3598 | M: 651-395-0948

7250 Hudson Boulevard N, Suite 160, Oakdale, MN 55128

www.crossroadspropeties.net

FOR LEASE

Mahtomedi Professional

12 Long Lake Road #5, Mahtomedi, MN 55115

PHOTOS

First Floor Reception Area – Suite A



First Floor Conference Room – Suite A



Second Floor Office – Suite A



First Floor Reception Area – Suite B



CROSSROADS
PROPERTIES

Mark Young

D: 651-233-2435 | M: 651-307-2371

Zac Houle

D: 651-209-0520 | M: 651-248-7567

Joseph Dokken

D: 651-363-3598 | M: 651-395-0948

7250 Hudson Boulevard N, Suite 160, Oakdale, MN 55128

www.crossroadsproperties.net