

# CENTENE PLAZA C



**+/- 20,000 SF**

**Available in the Heart of Downtown Clayton**



# A WORLD CLASS EXPERIENCE

## Unmatched Amenities

From terrace dining to world-class facilities, wellness and cuisine, the LEED certified Centene Plaza C puts everything your workforce needs within convenient reach.





## Superior Design

Designed with innovation in mind, Centene Plaza C is the seamless fusion of the most cutting-edge architectural achievements in sustainability, technology, and engineering.



## Premier Location

Ideally located in the heart of vibrant downtown Clayton, Centene Plaza C offers unparalleled access to St. Louis' top chefs, hotels, businesses, and neighborhoods.







RHINO PERK  
COFFEE FOR GOOD







# redefining workplace environment

Up to +/- 20,000 Contiguous SF Available (2nd floor)

32,000 SF State-of-the-Art Café

Outdoor Terrace Dining

4 X 1000 Attached Covered Tenant & Visitor Parking

24/7/365 Security

Car Wash Services

Energy Efficient LEED Design

Rhino Café (Full Barista Service)

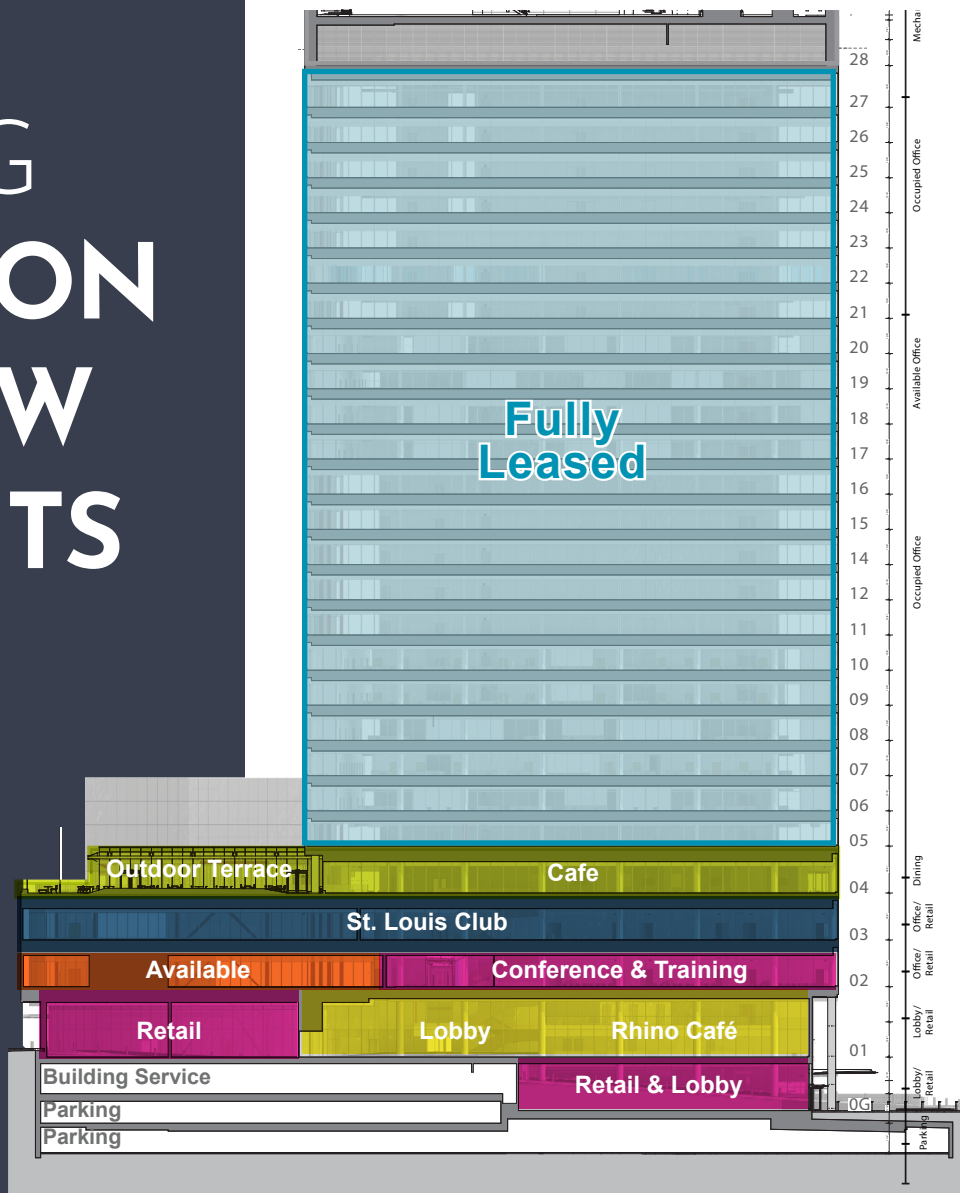
Conference & Training Facilities

**ASKING RATE: \$45.00/SF**





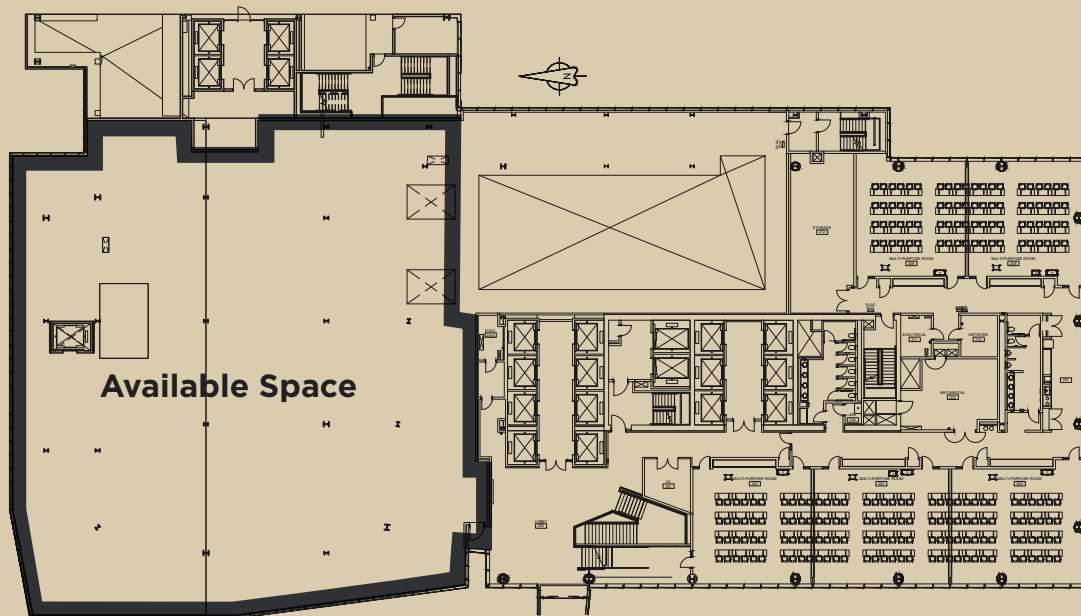
# TAKING CLAYTON TO NEW HEIGHTS





# 2ND FLOOR

+/- 20,000 SF





# EXCEPTIONAL RETAIL EXPERIENCE

Centene Plaza Campus features a pedestrian-friendly business district with open, public green spaces. Retail shops and innovative architecture and artwork create a unique setting in the heart of Clayton.





## Nearby Retail





# discover what it's like at the center of it all





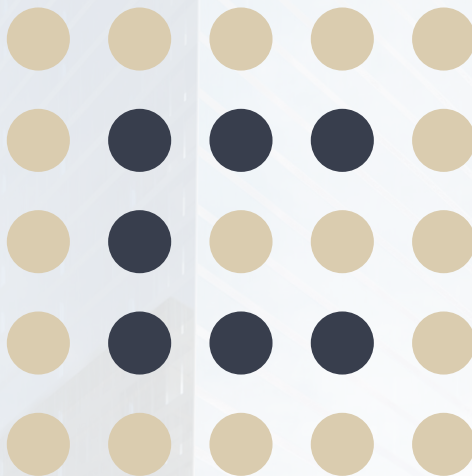
32 nearby restaurants

6 nearby exercise facilities & gyms

15 minutes to airport

4 hotels in walking distance





Jim Mosby  
Vice Chair  
314 746 0316  
[jjm.mosby@cushwake.com](mailto:jjm.mosby@cushwake.com)

Danielle Grubbs  
Senior Director  
314 925 3175  
[danielle.grubbs@cushwake.com](mailto:danielle.grubbs@cushwake.com)

Paddy Mullen  
Senior Director  
314 925 3178  
[paddy.mullen@cushwake.com](mailto:paddy.mullen@cushwake.com)

 **CUSHMAN &  
WAKEFIELD**  
7700 Forsyth Blvd., Suite 1210  
St. Louis, MO 63105  
314 862 7100  
[cushmanwakefield.com](http://cushmanwakefield.com)