

410 W. LINFIELD-TRAPPE ROAD, ROYERSFORD, PA

MEDICAL OFFICE SPACE AVAILABLE FOR LEASE



For more information, please contact:

Tom Hummel

thummel@geisrealty.com

215.568.2505

Dan Moller

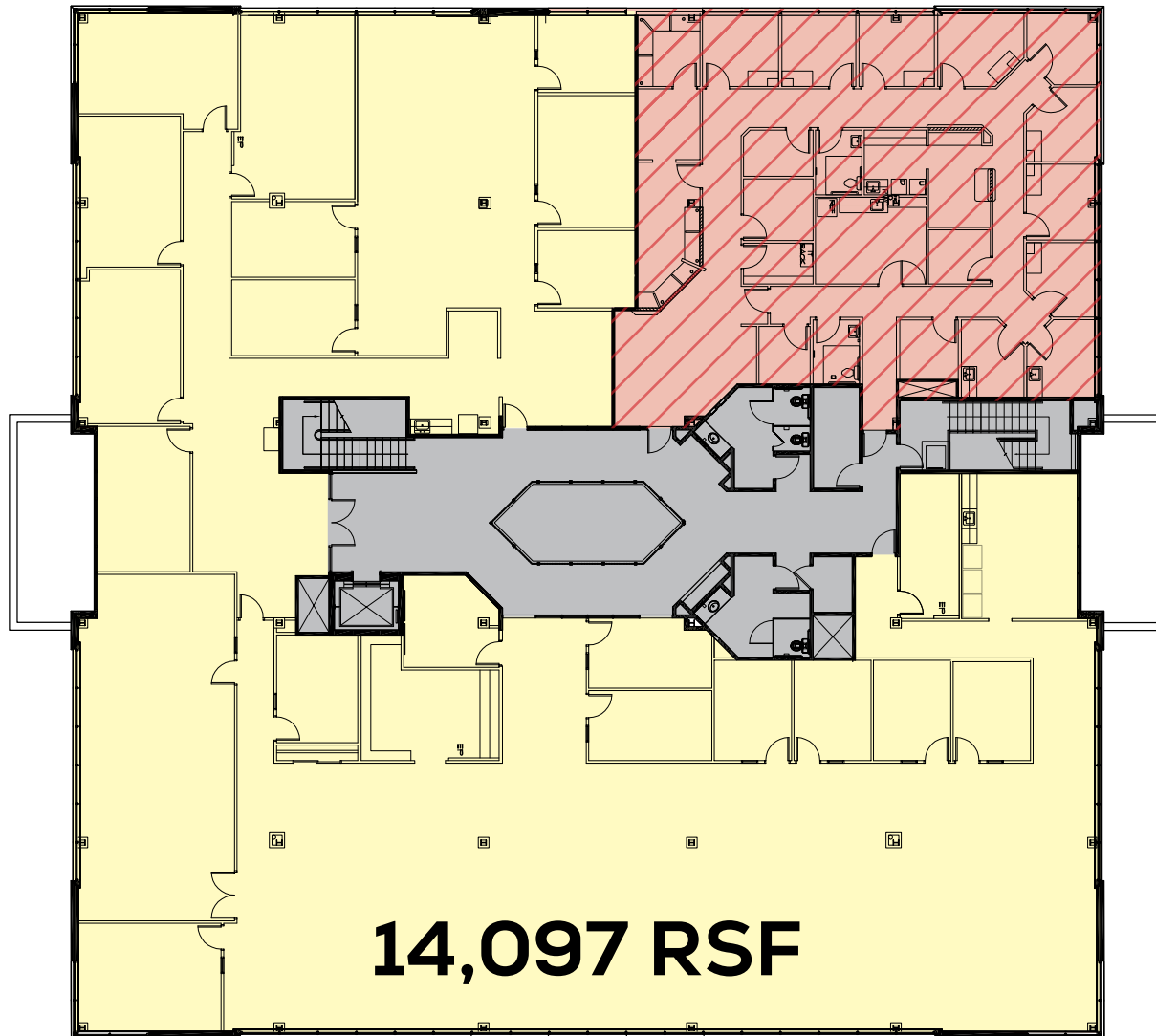
dmoller@geisrealty.com

215.701.0722

No warranty or representation, express or implied, is made as to the accuracy of the information contained herein, and the same is submitted subject to errors, omissions, change of price, rental or other conditions, prior sale, lease or financing, or withdrawal without notice, and of any special listing conditions imposed by our principals no warranties or representations are made as to the condition of the property or any hazards contained therein are any to be implied.

410 W. LINFIELD-TRAPPE ROAD, ROYERSFORD, PA

MEDICAL OFFICE SPACE AVAILABLE FOR LEASE



FOR LEASE:
14,097 RSF
ON THE 2ND FLOOR

Property Highlights

- Class A Medical Office Building located in the Limerick Office Campus
- Ample parking: 4 spaces/1,000 SF
- Rental Rate: \$29.00/SF + E&J
- Great exposure to Route 422 traffic with average daily vehicle count of 7,000
- Convenient access to Route 422
- Nearby dining, shopping and hotels
- Short drive to Upper Schuylkill Valley Park



Scan here to start
your virtual tour.



For more information, please contact:

Tom Hummel

thummel@geisrealty.com
215.568.2505

Dan Moller

dmoller@geisrealty.com
215.701.0722

410 W. LINFIELD-TRAPPE ROAD, ROYERSFORD, PA

MEDICAL OFFICE SPACE AVAILABLE FOR LEASE



For more information, please contact:

Tom Hummel

thummel@geisrealty.com

215.568.2505

Dan Moller

dmoller@geisrealty.com

215.701.0722

No warranty or representation, express or implied, is made as to the accuracy of the information contained herein, and the same is submitted subject to errors, omissions, change of price, rental or other conditions, prior sale, lease or financing, or withdrawal without notice, and of any special listing conditions imposed by our principals no warranties or representations are made as to the condition of the property or any hazards contained therein are any to be implied.