

# 150

E PALMETTO PARK ROAD

NEW OWNERSHIP | NEW MANAGEMENT | NEW LEASING



150 E Palmetto Park Road  
Boca Raton, FL 33432



GROVER CORLEW

CBRE



150 E Palmetto is within walking distance of Mizner Park, Royal Palm Place and less than a mile from the Boca Raton Resort & Club. Surrounded by countless restaurants, shops, and the new Boca Raton Brightline station.

BUILDING SIZE 109,497 SF

PARKING (garage) 3.00/1,000



LOCATION This location is walking distance to Mizner and all its amenities as well as restaurant and shops on the south side of Palmetto.



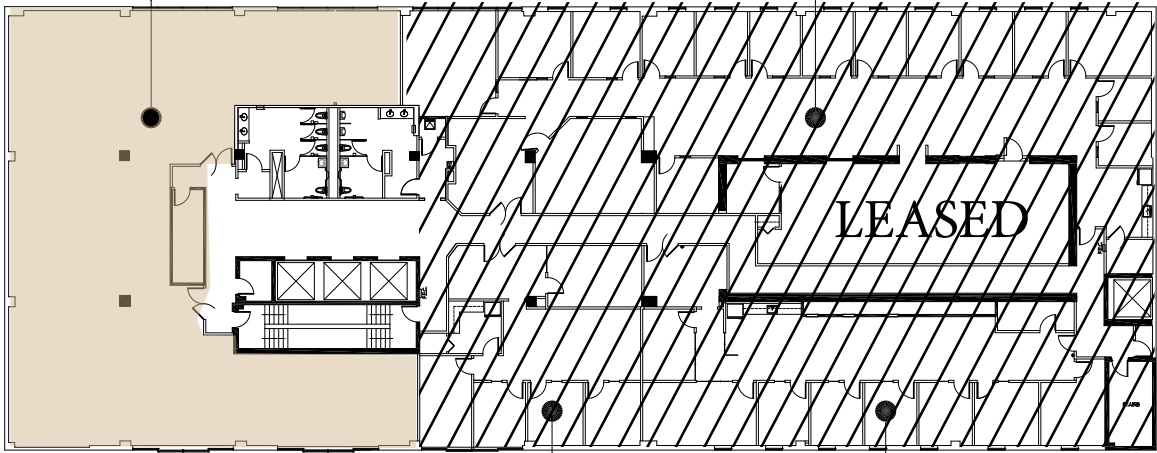
BUILDING The building and lobby have been renovated and the property is heavily landscaped and has a fountain at the entrance.



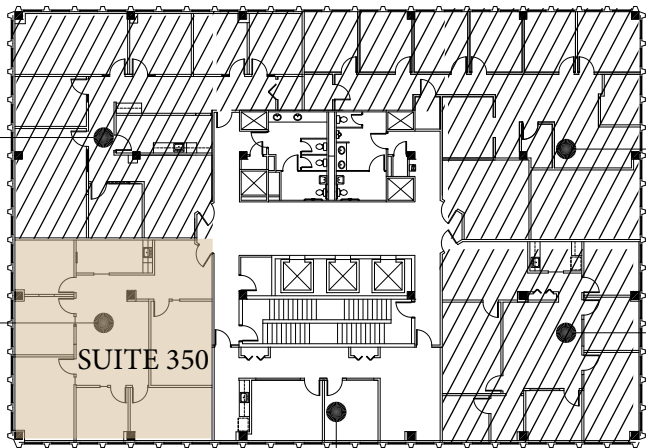
PARKING This building offers garage parking and surface parking offers easy access for tenants & visitors.

SPACE AVAILABLE		RATE	OPEX	NOTES
Suite 203/204	5,585 SF (Shell)	\$50.00 NNN	\$21.93	Available
Suite 350	1,939 SF	\$65.00 NNN	\$21.93	Available
Suite 700	3,763 SF - 6,855 SF	\$60.00 NNN	\$21.93	Available
Suite 750	3,092 SF - 6,855 SF	\$65.00 NNN	\$21.93	Available

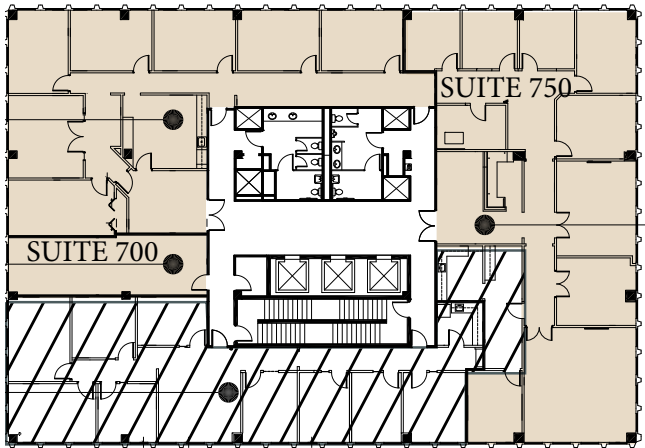
SUITE 203/204 - 5,585 SF



SUITE 350 - 1,939 SF



SUITE 700 - 3,763 SF  
SUITE 750 - 3,092 SF



Now Open New High-End Restaurant Concept







THE BOCA RATON  
RESORT

BOCA RATON  
GOLF CLUB

ROYAL PALM PLACE

HYATT PLACE

150

E PALMETTO PARK ROAD

MIZNER PARK

## MIZNER PARK

- Yard House
- Ruth's Chris Steak House
- Max's Grille
- Starbucks
- Sloan's
- Kapow Noodle Bar
- American Social
- Villagio
- iPic Theaters
- Calaveras Cantina
- Amphitheater in Mizner Park
- Loch Bar



## ACCESSIBILITY

150 E Palmetto is located on Palmetto Park Road in Downtown Boca Raton. The location is 2 miles from I-95 and .5 miles from the new Brightline station.



## ABUNDANT DINING

The area is full of many eateries for even the most discerning foodie. With dining options such as: Max's Grill, Eddie V's, American Social, Yard House, Ruth Chris Steakhouse, Kapow Noodle Bar, Villagio, Chops Lobster Bar, Lemongrass Asian Bistro, and Saquella Cafe



## LIFESTYLE

150 E Palmetto ideally positions you close to numerous fitness studios, from Pilates to boxing there is something for everyone to enjoy!

## FOR MORE INFORMATION, PLEASE CONTACT:

**John Criddle**

Executive Vice President

M +1 561 283 5176

[john.criddle@cbre.com](mailto:john.criddle@cbre.com)

**Joseph Freitas**

Senior Vice President

M +1 561 512 8844

[joe.freitas@cbre.com](mailto:joe.freitas@cbre.com)

**Max Pawk**

First Vice President

M +1 561 393 1670

[max.pawk@cbre.com](mailto:max.pawk@cbre.com)

**Nicholas Mulligan**

Associate

M +1 561 393 1680

[nicholas.mulligan@cbre.com](mailto:nicholas.mulligan@cbre.com)



GROVER CORLEW

