

FOR LEASE

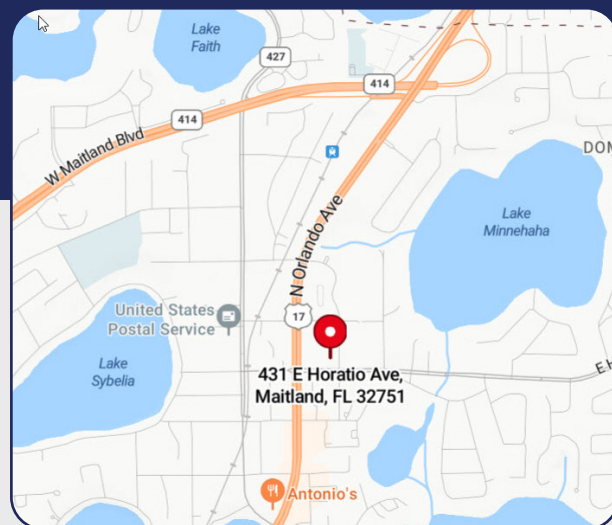


OFFICE SPACE

431 E Horatio Avenue, Maitland, FL 32751

1,633 RSF

- > 1,633 RSF office space available in Suite 300A
- > Three-story, Class B office building built in 1988
- > Corner location with windows in all offices
- > Well-maintained with attractive landscaping
- > Professionally managed and owned
- > Flexible terms
- > Exterior signage available
- > Excellent parking
- > Located one street east of the highly-traveled intersection of Horatio Avenue and N Orlando Ave (Hwy 17-92) in Downtown Maitland
- > Within walking distance of local restaurants and retail
- > Easy access to I-4 and Maitland Boulevard
- > **Available March 1, 2025**
- > **\$3,400.00/month**



Bill Bywater, CCIM

D 407.206.5736

O 407.206.7300

bill@bywater.com

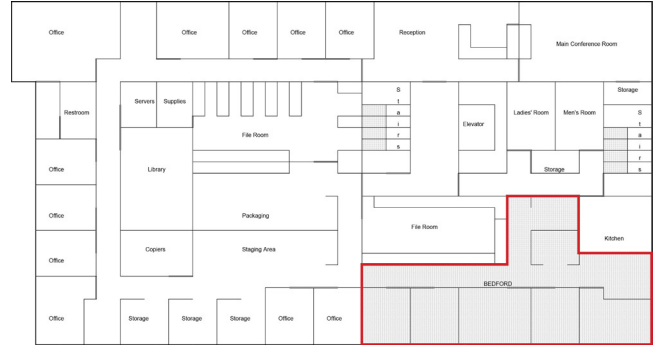
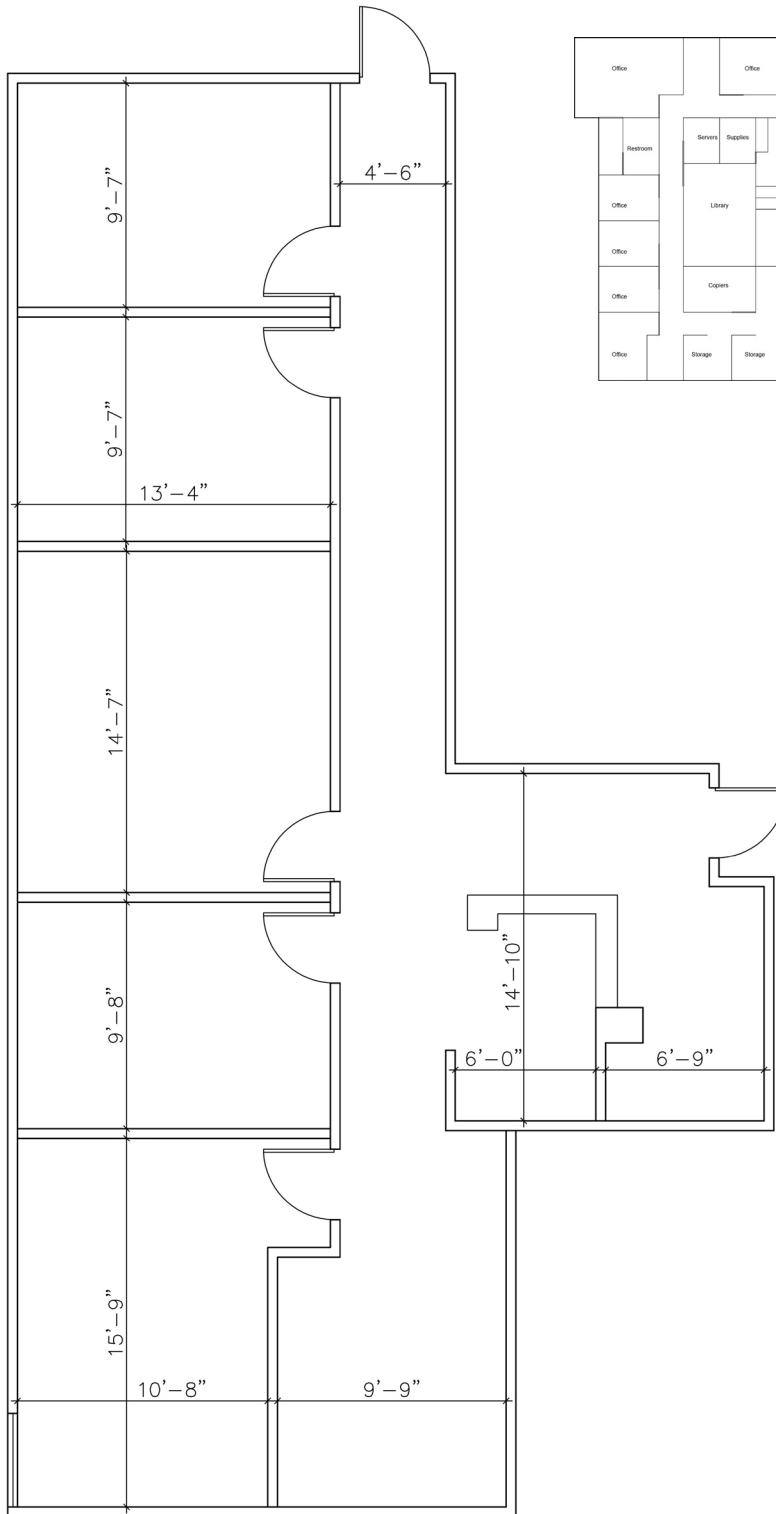


1209 Edgewater Drive
Suite 100
Orlando, FL 32804
407.206.7300 Main
www.bywater.com

OFFICE SPACE

431 E Horatio Avenue, Maitland, FL 32751

FLOOR PLAN



1209 Edgewater Drive, Suite 100 | Orlando, FL 32804 | 407.206.7300 | www.bywater.com

The information contained herein was obtained from sources deemed reliable and is assumed to be correct. It is not guaranteed by The Bywater Company.

OFFICE SPACE

431 E Horatio Avenue, Maitland, FL 32751



1209 Edgewater Drive, Suite 100 | Orlando, FL 32804 | 407.206.7300 | www.bywater.com

The information contained herein was obtained from sources deemed reliable and is assumed to be correct. It is not guaranteed by The Bywater Company.