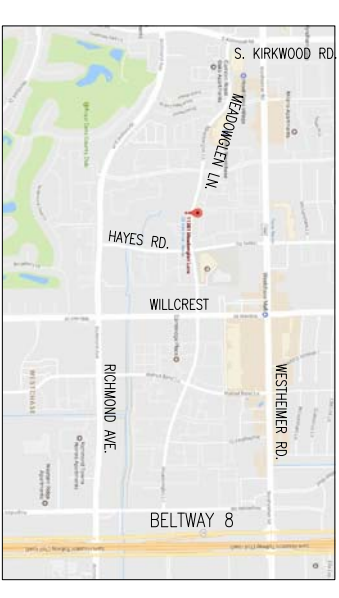
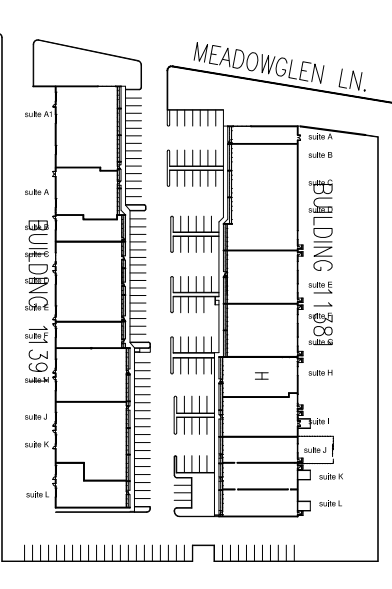


MEADOWGLEN BUSINESS PARK
11381 MEADOWGLEN LN, SUITE H
HOUSTON TEXAS 77082

MAP 



SITE PLAN 

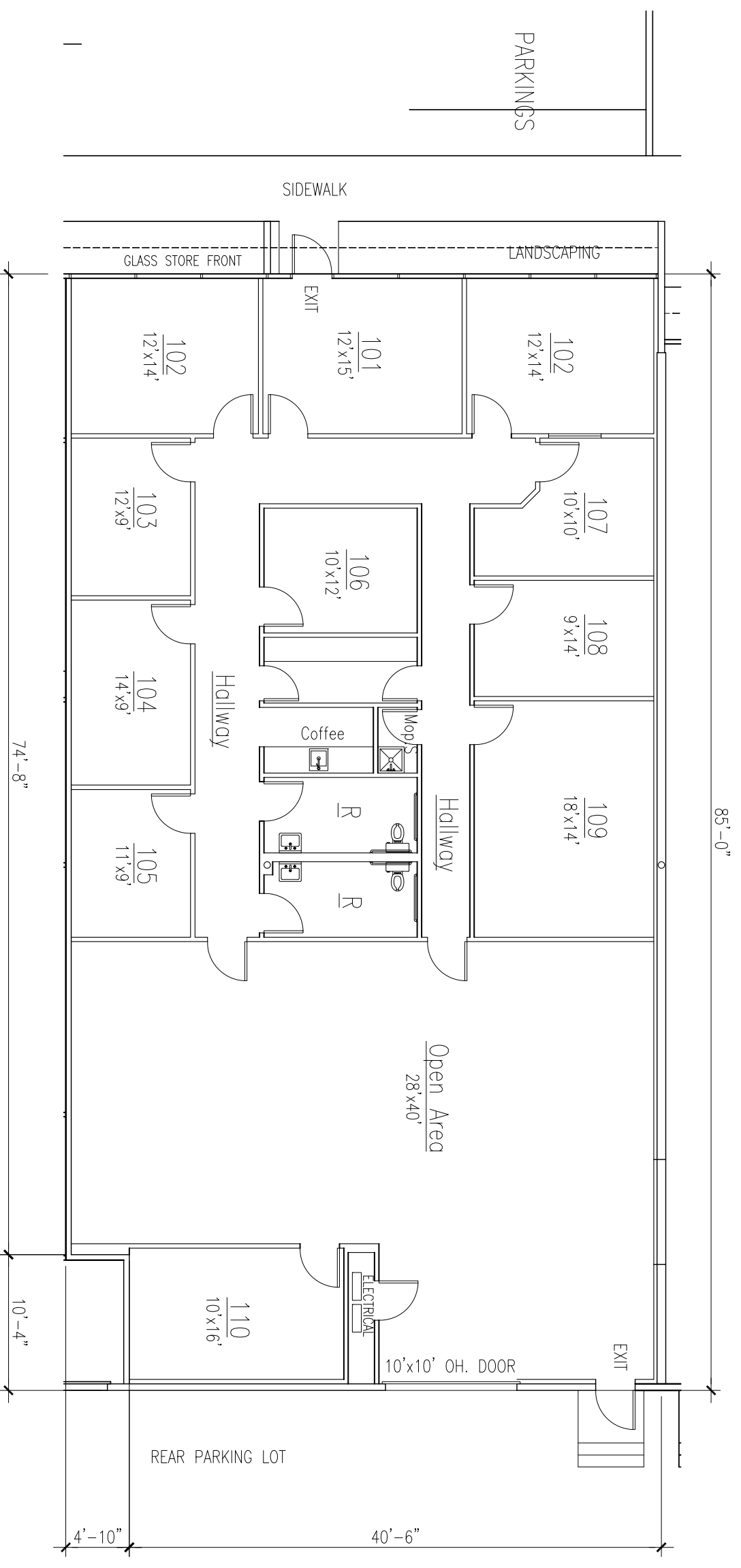



BUILDING SUMMARY

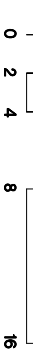
OFFICE AREA: **3,825 SQ. FT.**
 TOTAL AREA: **3,825 SQ. FT.**

BUILDING FEATURES

- MASTER PLANNED BUSINESS PARK
- CONCRETE TILT WALL CONSTRUCTION
- SEMI DOCK HIGH REAR LOADING DOORS
- 14' AVERAGE CLEAR HEIGHT
- ALL CONCRETE PAVING



SUITE H FLOOR PLAN 



These listings are offered subject to error, omission, prior lease, or withdrawal without notice.