

# 253 Church Street

TRIBECA  
NEW YORK, NY



**NEWMARK**

# Property Details

## Location

East block between Leonard and Franklin Streets

## Approximate Size

Ground Floor 1,263 SF  
Lower Level 1,627 SF  
Mezzanine 221 SF  
Total 3,111 SF

## Term

Negotiable

## Possession

Immediate

## Ceiling Height

16'2"

## Frontage

24 FT

## Site Status

Vacant- Formerly OK Uniform

## Rent

Upon Request

## Neighbors

James Perse, Zadig & Voltaire, Almine Rech Gallery, Billy's Bakery, Aire Ancient Baths, Tracy Anderson Method, Casa Carmen, Roxy Hotel, Two Hands Cafe, Galerie 56, Ted Muehling and Studio Twenty Seven

## Comments

Great Tribeca Pocket with top art galleries, fashion brands, restaurants and nightlife

Located in the heart of the Northeast Tribeca Art and Design District.

Next door to the celebrity hot spot Two Hands Restaurant and Bar

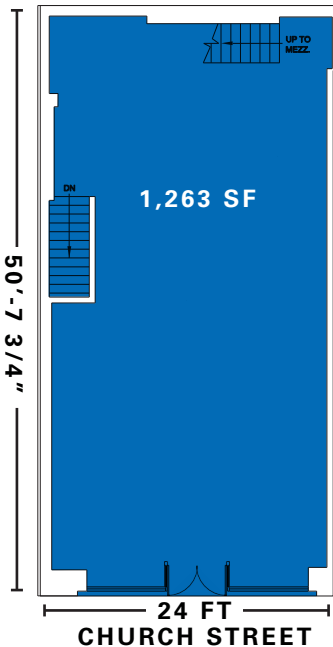
Strong mix of TAMI office tenants and high-end residential in the immediate vicinity

All uses accepted

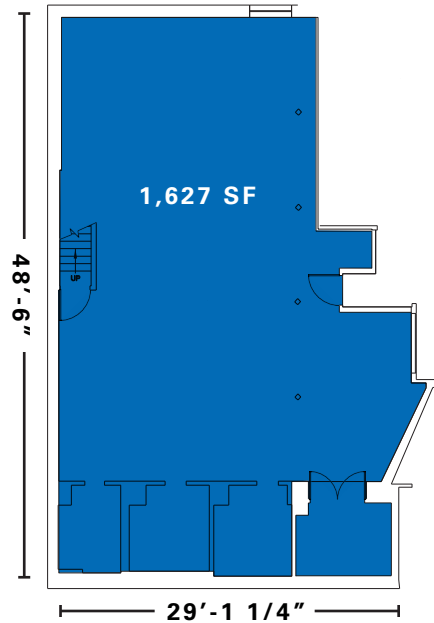
Hardwood floors and original tin ceiling

There is a 2,896 RSF duplex office space available on the Fourth Floor

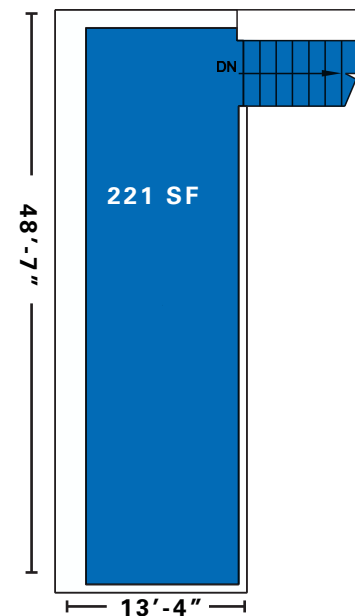
Ground Floor



Lower Level



Mezzanine





# Property Details



# 253 CHURCH STREET



## CONTACT

**Ariel Schuster**  
 t 212-331-0132  
 ariel.schuster@nrmk.com

**Andrew Stern**  
 t 212-351-9353  
 andrew.stern@nrmk.com

**Ravi Idnani**  
 t 212-916-2938  
 ravi.idnani@nrmk.com

[nrmk.com](http://nrmk.com)