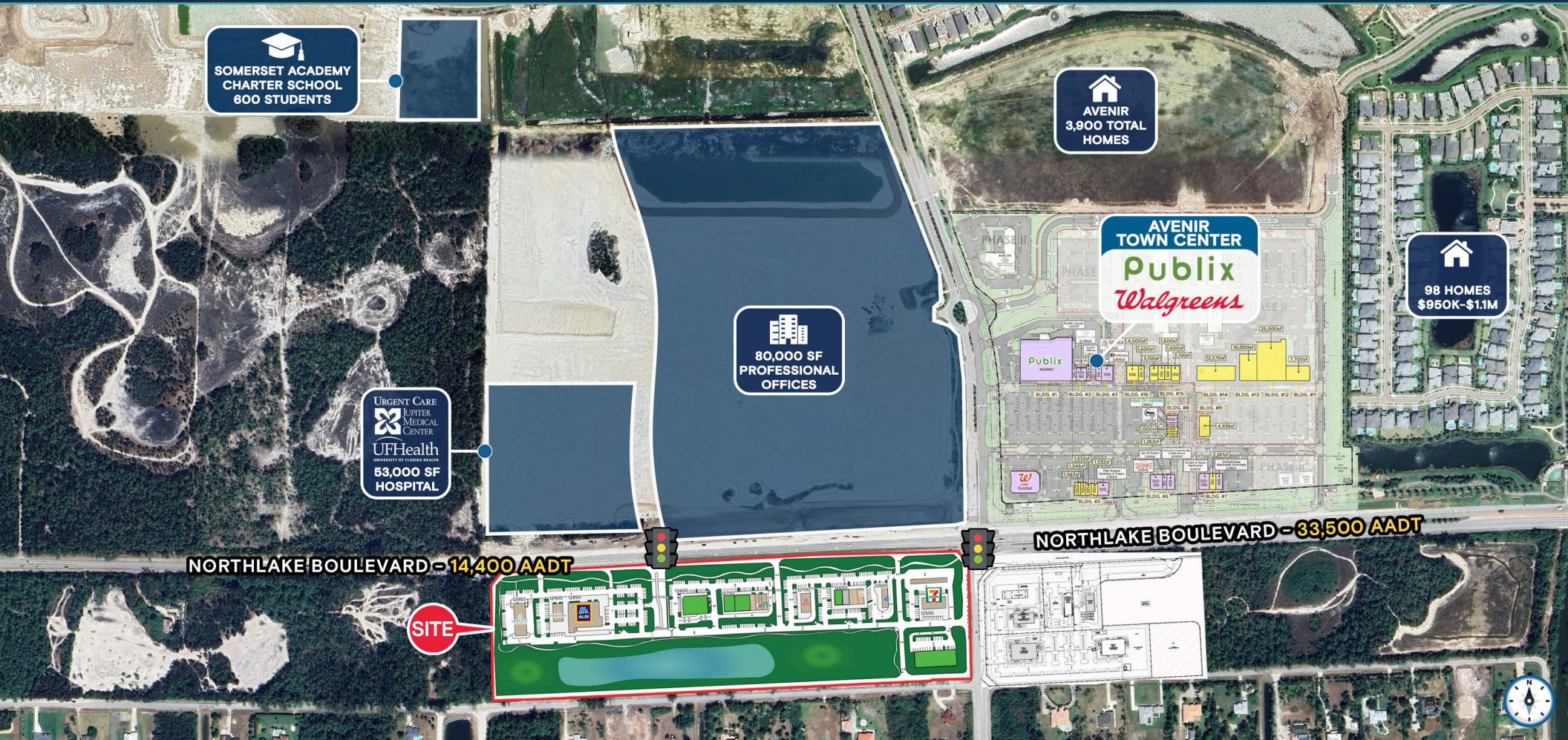




Coconut Crossing

A Konover South Development

RETAIL SPACE FOR LEASE
12500-12950 Northlake Boulevard
Palm Beach Gardens, FL 33418



A PREMIER OPPORTUNITY TO JOIN A DYNAMIC, FAST-GROWING TRADE AREA

EXCLUSIVE RETAIL LEASING

KATZ & ASSOCIATES







RETAIL REAL ESTATE ADVISORS

Allan Carlisle
SENIOR DIRECTOR
allancarlisle@katzretail.com
(561) 385-4791

Jon Cashion
PRINCIPAL
joncashion@katzretail.com
(561) 302-7071

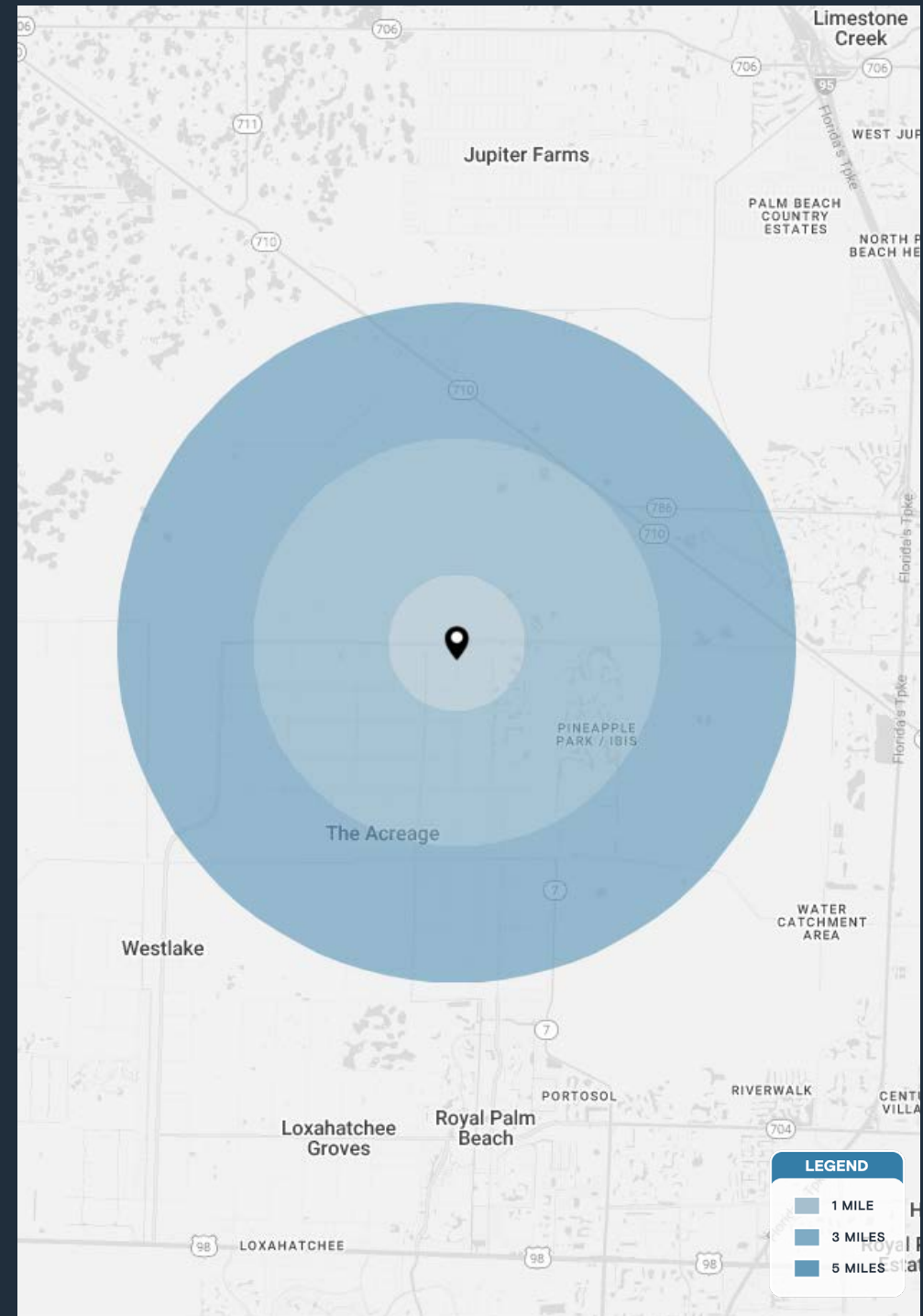
Property Overview

HIGHLIGHTS

- First generation retail, restaurant, and office space available
- Coconut Crossing is a new 100,000 SF Class A retail center located at the signalized southwest corner of Northlake Blvd & Coconut Blvd in affluent Western Palm Beach County
- Join      
- Currently under construction and slated for Q4 2025 delivery
- Directly across the street from Avenir, a master-planned community featuring 3,900 residential units, 400,000 SF of retail anchored by Publix, 2M SF of office space, a premier golf course, and 200,000+ SF of medical facilities.
- Strong trade area with 30,000+ existing residences nearby and an additional 15,000 homes in various stages of development, exceeding well over \$150,000 per household

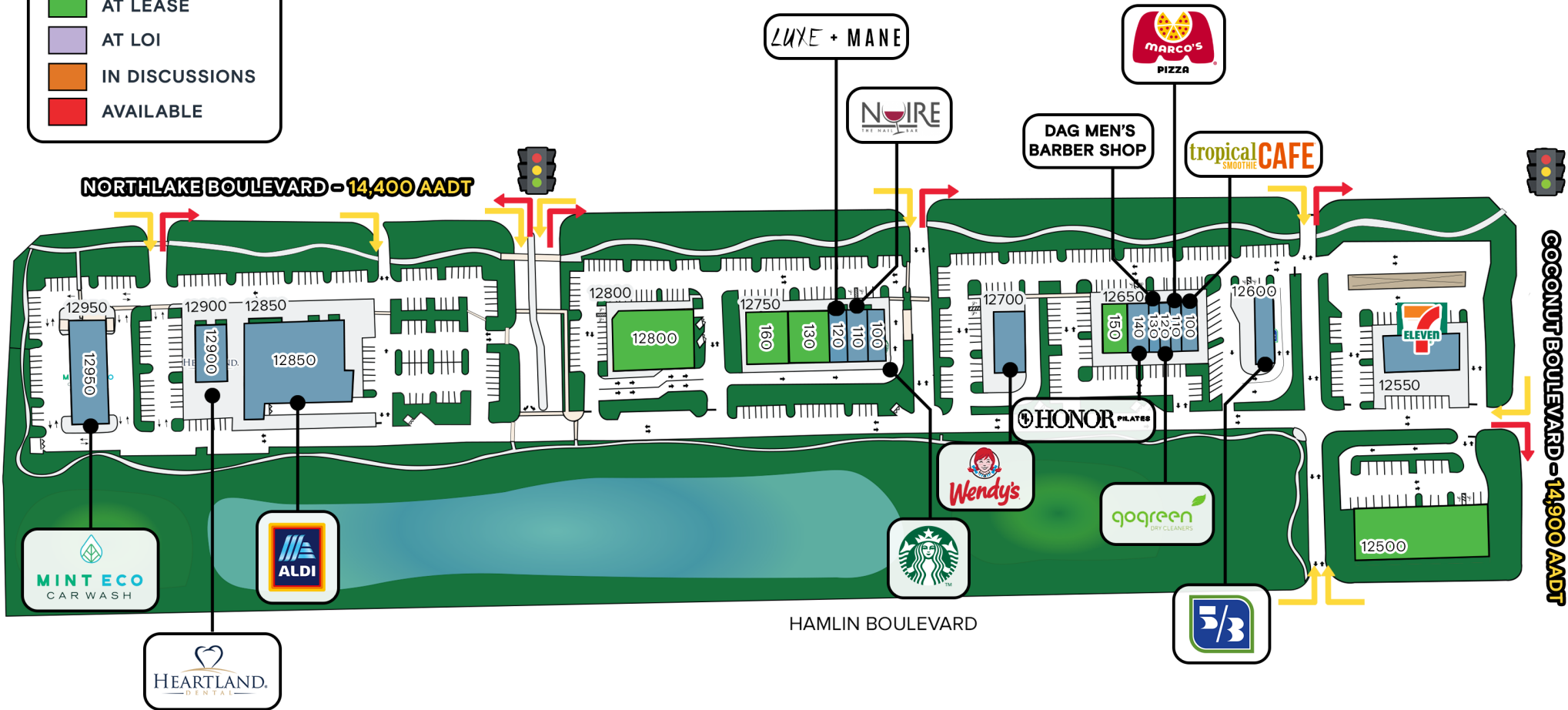
DEMOGRAPHICS

	1 MILE	3 MILES	5 MILES
POPULATION	1,903	20,082	41,162
HOUSEHOLDS	608	7,271	14,108
EMPLOYEES	1,576	17,264	34,853
AVERAGE HH INCOME	\$152,977	\$166,811	\$145,848
	5 MINUTES	10 MINUTES	15 MINUTES
POPULATION	7,562	27,119	49,150
HOUSEHOLDS	2,576	9,586	17,270
EMPLOYEES	6,394	23,184	41,713
AVERAGE HH INCOME	\$187,072	\$156,614	\$146,511



LEGEND

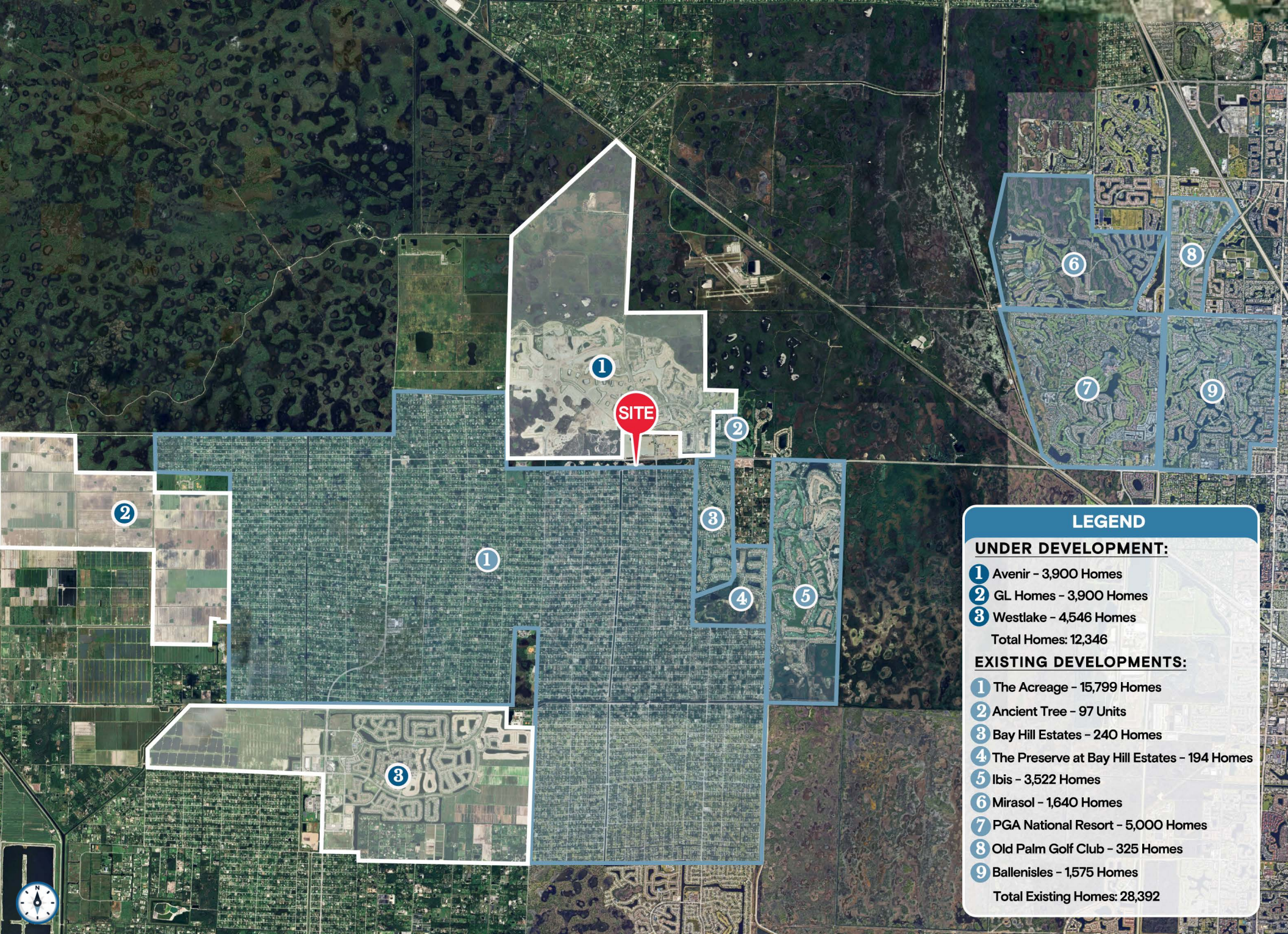
- LEASED
- AT LEASE
- AT LOI
- IN DISCUSSIONS
- AVAILABLE



Tenant Roster

12950	Eco Car Wash	7,000 SF	12750-110	Noire Nail Bar	2,561 SF	12650-100	Tropical Smoothie Cafe	1,800 SF	12650-150	Mexican at lease	2,564 SF
12900	Heartland Dental	4,200 SF	12750-120	Luxe + Mane	2,000 SF	12650-110	Marco's Pizza	1,140 SF	12600	Fifth Third Bank	2,500 SF
12850	Aldi	21,950 SF	12750-130	Mattress store at lease	4,260 SF	12650-120	Go Green	1,203 SF	12550	7-Eleven	5,200 SF
12800	Liquor Store at lease	14,942 SF	12750-160	Breakfast at lease	3,130 SF	12650-130	Dag Men's Barber Shop	1,203 SF	12500	Daycare at lease	13,575 SF
12750-100	Starbucks	2,600 SF	12700	Wendy's	2,600 SF	12650-140	Honor Pilates	2,220 SF			





LEGEND

UNDER DEVELOPMENT:

- 1 Avenir - 3,900 Homes
- 2 GL Homes - 3,900 Homes
- 3 Westlake - 4,546 Homes

Total Homes: 12,346

EXISTING DEVELOPMENTS:

- 1 The Acreage - 15,799 Homes
- 2 Ancient Tree - 97 Units
- 3 Bay Hill Estates - 240 Homes
- 4 The Preserve at Bay Hill Estates - 194 Homes
- 5 Ibis - 3,522 Homes
- 6 Mirasol - 1,640 Homes
- 7 PGA National Resort - 5,000 Homes
- 8 Old Palm Golf Club - 325 Homes
- 9 Ballenisles - 1,575 Homes

Total Existing Homes: 28,392

Contact Brokers

Allan Carlisle

SENIOR DIRECTOR

allancarlisle@katzretail.com

(561) 385-4791

Jon Cashion

PRINCIPAL

joncashion@katzretail.com

(561) 302-7071



KATZ & ASSOCIATES

RETAIL REAL ESTATE ADVISORS

katzretail.com

The information herein was obtained from third parties and has not been independently verified by Katz & Associates. Any and all interested parties should have their choice of experts inspect the property and verify all information. Katz & Associates makes no warranties or guarantees as to the information given to any prospective buyer or tenant. REV: 03.30.26