

11255 S. CENTRAL AVE., ONTARIO, CA 91762

FOR LEASE

+/- 4,100 SF OFFICE UNIT

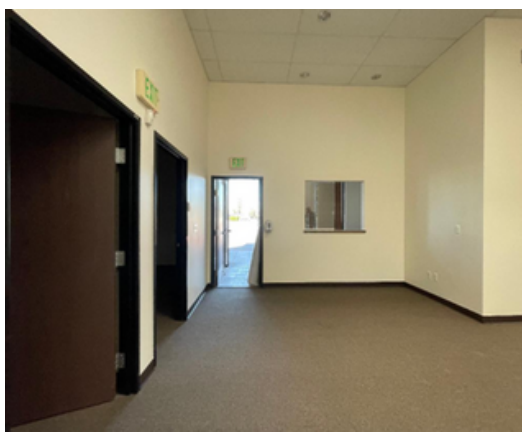


ROMMEL CORPUS

Senior Sales Associate
Direct: 213-326-3331 Email:
Rommelcorpus@yahoo.com
CA DRE LICENSE #01102433

JORGE YAMZON

Senior Vice President / Director
Direct: 626-786-5869
Email: Jorgeyamzon@remax.net
CA DRE LICENSE #01359483



PROPERTY DESCRIPTION

**+/- 4,100 SF OFFICE UNIT
FOR SUBLEASE**

- RECEPTION AREA
- 10 PRIVATE OFFICES
- BREAKROOM / KITCHEN
- MEN'S & WOMEN'S BATHROOM
- AMPLE PARKING
- PART OF A CAMPUS

DISCLAIMER: THIS INFORMATION HAS BEEN SECURED FROM SOURCES WE BELIEVE TO BE RELIABLE, BUT WE MAKE NO REPRESENTATIONS OR GUARANTEES, EXPRESSED OR IMPLIED, AS TO THE ACCURACY OF THE INFORMATION. REFERENCES TO SQUARE FOOTAGE OR AGE ARE APPROXIMATE. BUYER MUST VERIFY THE INFORMATION AND BEARS ALL RISK FOR ANY INACCURACIES.