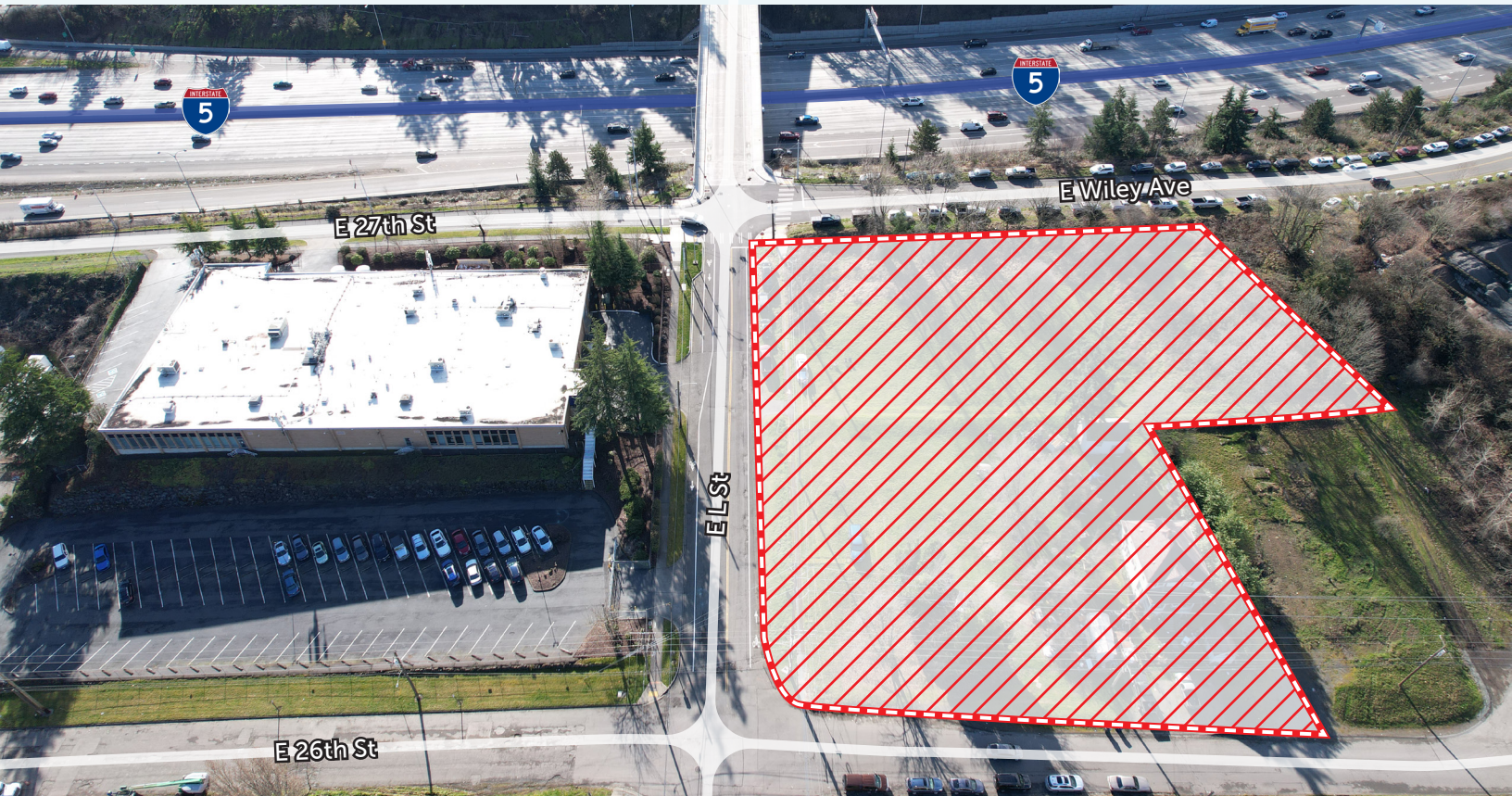


E L ST / E 26TH ST LAND

FOR SALE: \$4,250,000

2620 E L ST / 1112 E 26TH ST | TACOMA, WA 98421

PRIME I-5 VISIBLE DEVELOPMENT SITE



PROPERTY DESCRIPTION

- 5 Tax Parcels
- 64,033 SF (1.48 Acres)
- M1/M2 Zoning
- Walking distance to Tacoma Dome Station and Transit Center
- Unobstructed views of Mt. Rainier & towards Commencement Bay



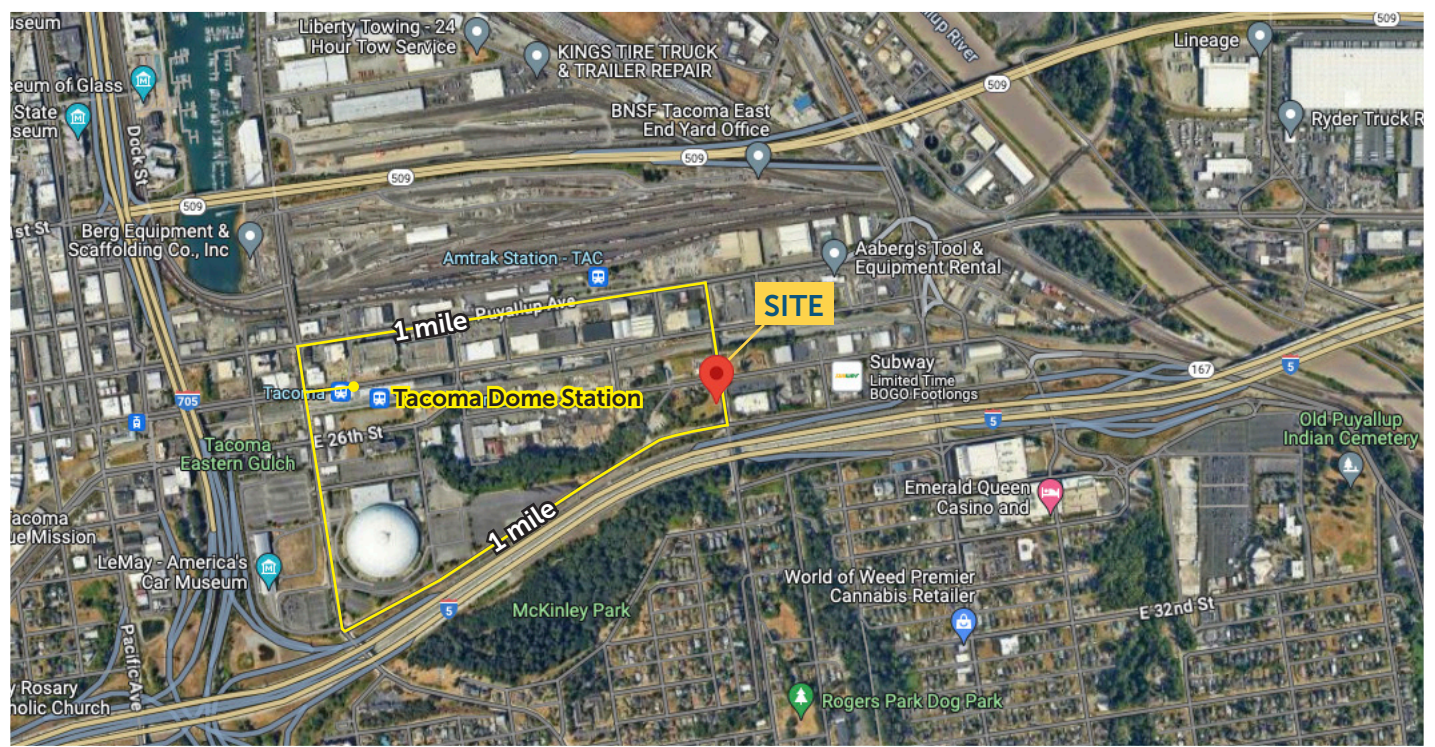
ERIC CEDERSTRAND
253.377.0988
ecederstrand@neilwalter.com

JOHN DEHAN
253.779.2433
jdehan@neilwalter.com

All information references in this document are approximate. The information contained herein is contained from sources deemed reliable. It is provided without representation, warranty, or guarantee, expressed or implied as to accuracy. Prospective buyer or tenant should conduct its own independent investigation relating to the property, government codes and regulations, allowed uses, and all other matters, regardless of whether they are referred to or contained in this document.

E L ST / E 26TH ST LAND

2620 E L ST / 1112 E 26TH ST | TACOMA, WA 98421



ERIC CEDERSTRAND
253.377.0988
ecederstrand@neilwalter.com

JOHN DEHAN
253.779.2433
jdehan@neilwalter.com

1940 East D St, #100
Tacoma, WA 98421
253.779.8400
www.neilwalter.com