

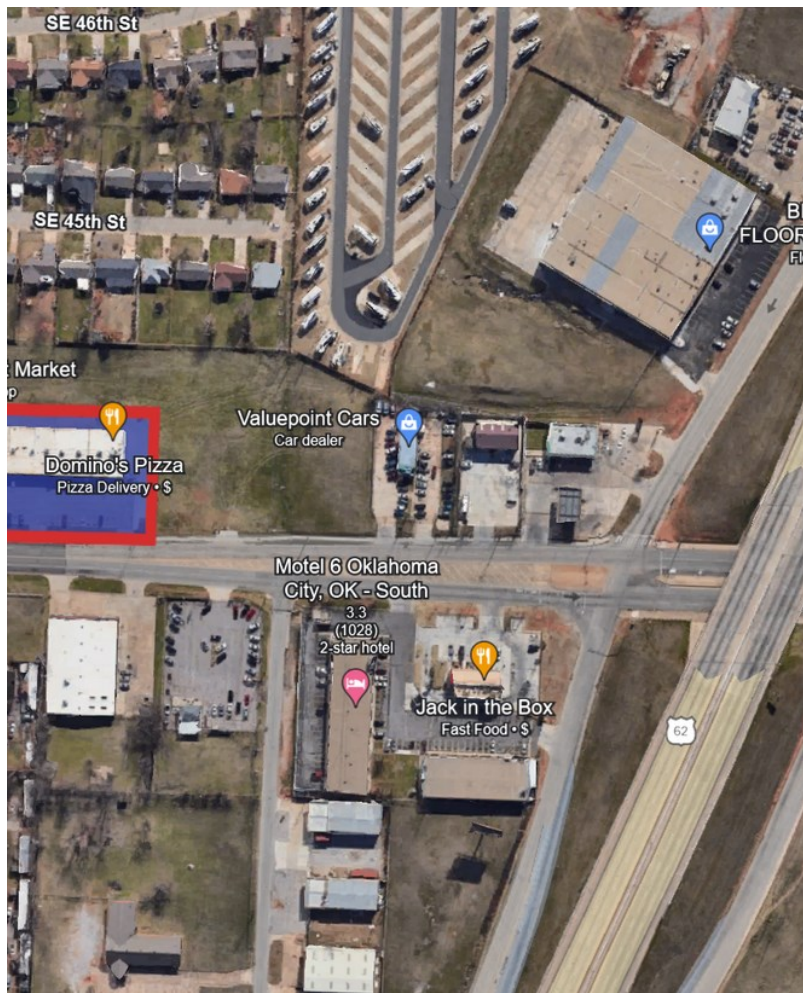
Retail Space Available for Lease | Shallow Brook Plaza | 1,500 SF

1514-1522 SE 44th St, Oklahoma City, OK 73129



Shannon Wells Graham

Artemis Commercial Group
172931 Prospectors Ridge Dr, Duncan, OK 73533
shannon@acgnnn.com
(405) 778-3355



1514-1522 SE 44th St

\$12.00 /SF/YR

Welcome to the shopping center at Shallow Brook Plaza! This one-story building, constructed in 1980, offers ample parking, pylon signage, and great co-tenants for your retail business.

The 1516 center is a one-story brick building situated on 3.32 acres at the corner of SE. 44th St. and Shallow Brook Drive. Its convenient location near I-35 and I-240 provides easy access to anywhere in the Oklahoma City metro area.

Currently, there are two 1,500 square-foot spaces available for lease at a rate of \$12 per square foot annually, plus \$2 NNN. Don't miss out on this prime opportunity to join a thriving retail community...

- Signage
- Less than 1 mile from I-35
- Lots of natural light

For more information visit:

<https://www.loopnet.com/Listing/1514-1522-SE-44th-St-Oklahoma-City-OK/31890467/>



Rental Rate:	\$12.00 /SF/YR
Property Type:	Shopping Center
Center Type:	Strip Center
Stores:	9
Center Properties:	1
Frontage:	315' on 44th
Gross Leasable Area:	30,000 SF
Walk Score ®:	47 (Car-Dependent)
Transit Score ®:	28 (Some Transit)
Rental Rate Mo:	\$1.00 /SF/MO

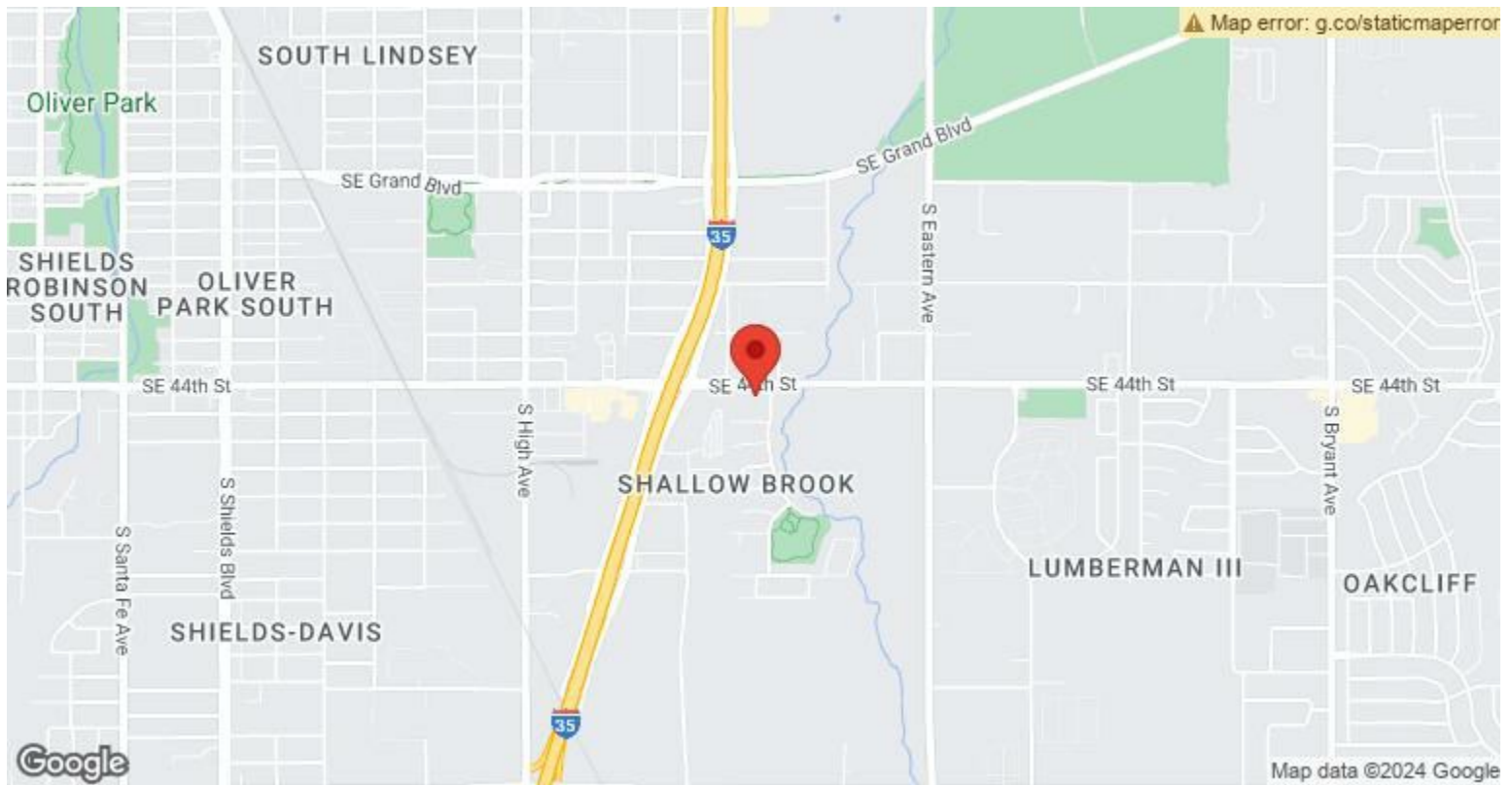
1st Floor

Space Available	1,500 SF
Rental Rate	\$12.00 /SF/YR
Date Available	May 23, 2024
Service Type	Triple Net (NNN)
Space Type	Relet
Space Use	Retail
Lease Term	2 - 5 Years

Welcome to the shopping center at Shallow Brook Plaza! This one-story building, constructed in 1980, offers ample parking, pylon signage, and great co-tenants for your retail business. The 1516 center is a one-story brick building situated on 3.32 acres at the corner of SE. 44th St. and Shallow Brook Drive. Its convenient location near I-35 and I-240 provides easy access to anywhere in the Oklahoma City metro area. Currently, there are two 1,500 square-foot spaces available for lease at a rate of \$12 per square foot annually, plus \$2 NNN. Don't miss out on this prime opportunity to join a thriving retail community in a highly visible and accessible location.

Major Tenant Information

Tenant	SF Occupied	Lease Expired
Ann's I 35 Tan & Spa	-	
Domino's	-	
House Of Fades LLC	-	



1514-1522 SE 44th St, Oklahoma City, OK 73129

Welcome to the shopping center at Shallow Brook Plaza! This one-story building, constructed in 1980, offers ample parking, pylon signage, and great co-tenants for your retail business.

The 1516 center is a one-story brick building situated on 3.32 acres at the corner of SE. 44th St. and Shallow Brook Drive. Its convenient location near I-35 and I-240 provides easy access to anywhere in the Oklahoma City metro area.

Currently, there are two 1,500 square-foot spaces available for lease at a rate of \$12 per square foot annually, plus \$2 NNN. Don't miss out on this prime opportunity to join a thriving retail community in a highly visible and accessible location.

Property Photos

