

# INDUSTRIAL SPACE FOR LEASE



## Property Highlights

**$\pm 1,964 - \pm 17,368$**   
AVAILABLE SF

**22'**  
CLEAR HEIGHT

**CALL**  
BROKERS FOR PRICING

Entire building available for lease

Flexible lease terms available

Divisible down to  $\pm 1,964$  SF

Seeking industrial uses

Six (6), twelve-foot (12') grade-level doors

Twenty-two foot (22') ceiling height

Locally owned and managed

*For more information  
or touring, contact*

**WILL BALLOWE**  
Kidder Mathews  
925.389.2499  
will.ballowe@kidder.com  
LIC N° 02053125

**BLAKE DICUS**  
Lee & Associates  
925.737.4144  
bdicus@lee-associates.com  
LIC N° 02074870

**KIDDER.COM**

This information supplied herein is from sources we deem reliable. It is provided without any representation, warranty, or guarantee, expressed or implied as to its accuracy. Prospective Buyer or Tenant should conduct an independent investigation and verification of all matters deemed to be material, including, but not limited to, statements of income and expenses. Consult your attorney, accountant, or other professional advisor.

## FLOOR PLAN

*±17,368*

RSF AVAILABLE

*9 ROLL UP*

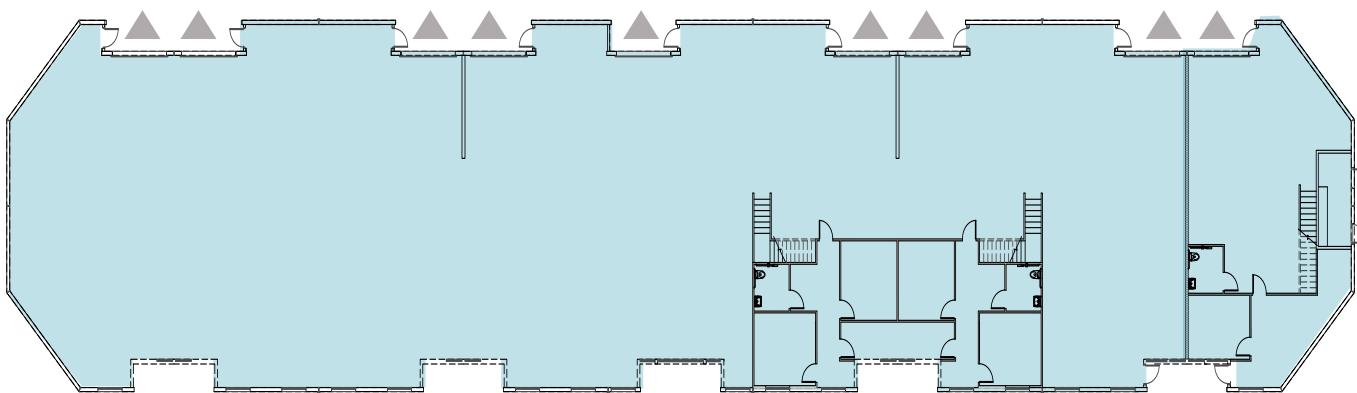
GRADE LEVEL DOORS

*90%*

WAREHOUSE

*10%*

OFFICE



▲ Grade level loading

FLOOR PLAN NOT TO SCALE

## HYPOTHETICAL

*±11,564 RSF*

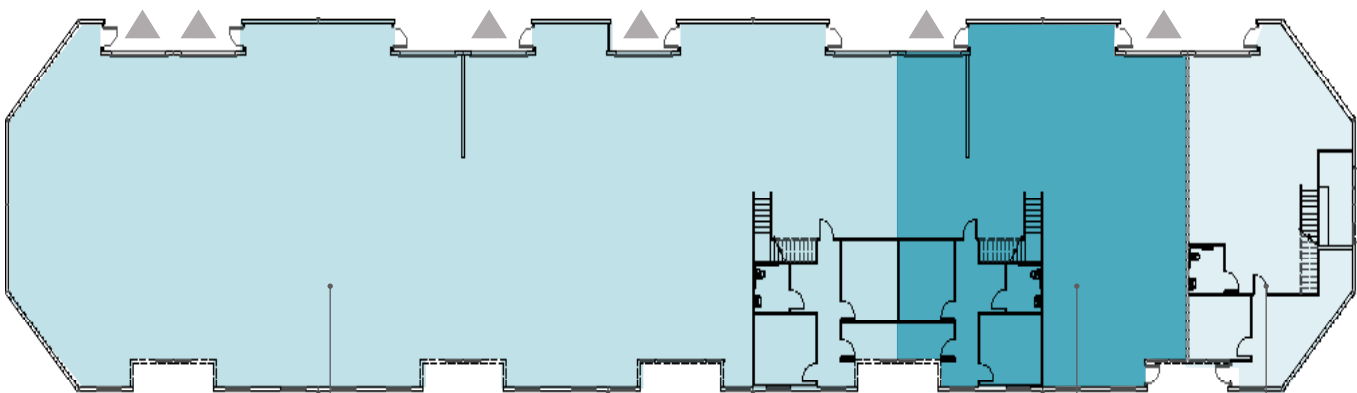
SUITE A

*±3,840 RSF*

SUITE B

*±1,964 RSF*

SUITE 9



SUITE A

SUITE B

SUITE 9

KIDDER.COM

This information supplied herein is from sources we deem reliable. It is provided without any representation, warranty, or guarantee, expressed or implied as to its accuracy. Prospective Buyer or Tenant should conduct an independent investigation and verification of all matters deemed to be material, including, but not limited to, statements of income and expenses. Consult your attorney, accountant, or other professional advisor.



