

**43214 BLACK DEER LOOP  
TEMECULA, CA 92590**

**FOR LEASE  
± 2,112 SF - ± 23,424  
STORAGE WAREHOUSE**



**JACKIE BEAUCHAMP**

**(951) 684-1251 | [jbeauchamp@mcgre.com](mailto:jbeauchamp@mcgre.com)**

**DRE License # #01461175 | #01899258**



**MARTIN  
COMMERCIAL  
GROUP**

Commercial Real Estate Services

**[WWW.MCGRE.COM](http://WWW.MCGRE.COM)**

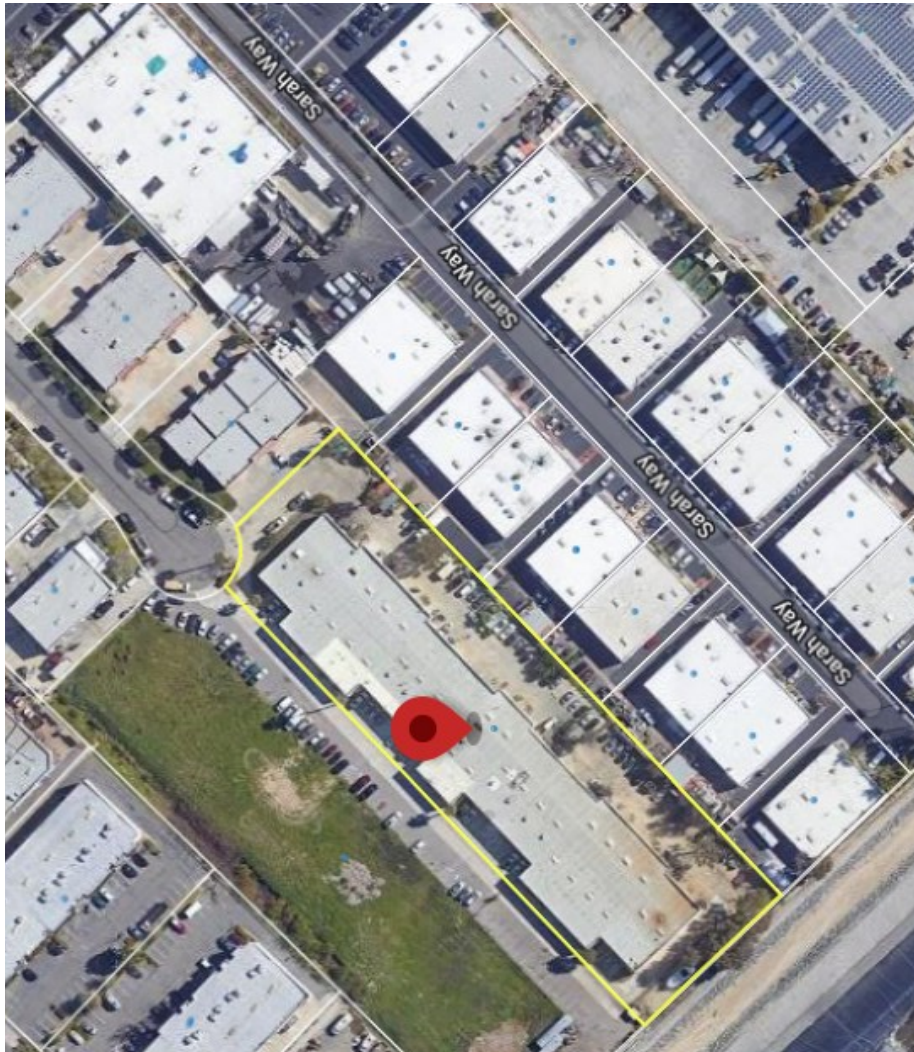


**43214 BLACK DEER LOOP  
TEMECULA, CA 92590**

**FOR LEASE**

**± 2,112 SF - ± 23,424**

**STORAGE WAREHOUSE**



## **PROPERTY HIGHLIGHTS**

- **±2,112 - 23,434 SF Industrial Units for Lease**
- **Office/Warehouse Floorplans**
- **Restroom(s)**
- **LI – Light Industrial Zone**
- **Ground Level Doors**
- **Power: 480V (Verify) (Suites 116-122)**
- **Power: 100A, 3P/4W (Verify)**
- **Possible Fenced Yard (Suites 116-122)**
- **Easy Access to 15 FWY**
- **CALL AGENT TO SHOW!**



**MARTIN  
COMMERCIAL  
GROUP**  
Commercial Real Estate Services

The information contained herein has been obtained from sources we deem reliable. While we have no reason to doubt its accuracy, we do not guarantee it.

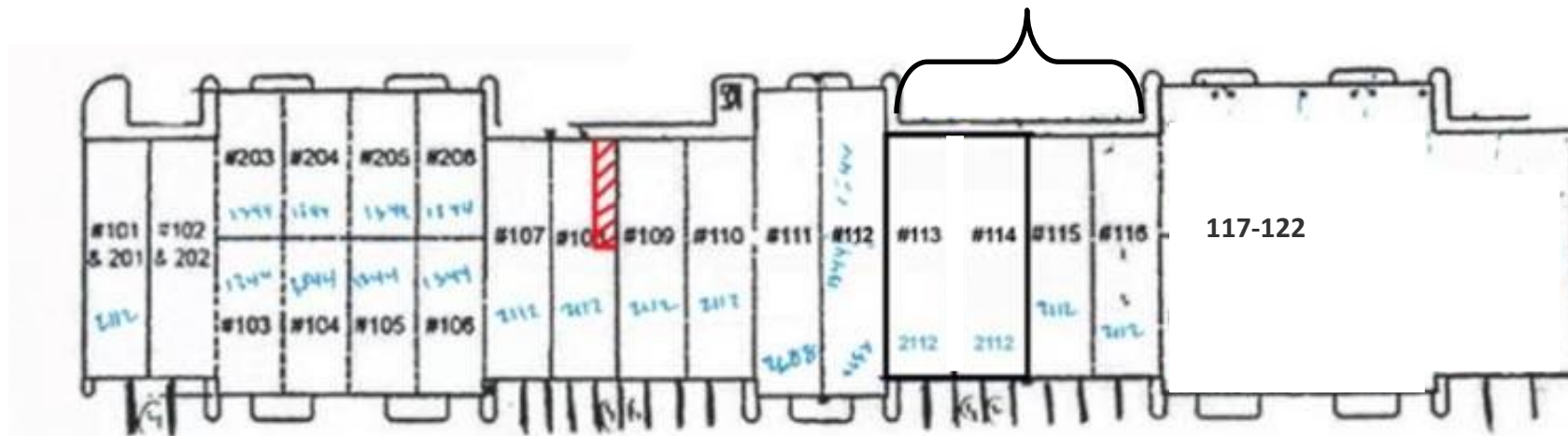
**CORPORATE OFFICE: 1495 E. WARNER AVENUE ~ SANTA ANA, CA 92705**  
**Orange County 714-241-1141**  
**Inland Empire: 951-684-1251**

**43214 BLACK DEER LOOP  
TEMECULA, CA 92590**

**FOR LEASE  
± 2,112 SF - ± 23,424  
STORAGE WAREHOUSE**

## AVAILABILITY

SUITE	SQ. FT.	BASE RENT	CAM	DESCRIPTION	AVAIL. DATE
107	2,112+ /-	\$2,995.00 (1.40 MG)	Water & Trash Included	1 Office, Warehouse & Restroom	Aprox. 60 days
115	2,112 +/-	\$2,955.00 (1.40MG)	Water & Trash Included	1 Office, Warehouse & Restroom	Immediately
LAND	1,250 +/-	\$1500/MO.		<i>Fenced in Yard area at the end of the complex</i>	Immediately



[WWW.MCGRE.COM](http://WWW.MCGRE.COM)

**JACKIE BEAUCHAMP**

(951) 684-1251 | [jbeauchamp@mcgre.com](mailto:jbeauchamp@mcgre.com)

DRE License # #01461175 | #01899258



**MARTIN  
COMMERCIAL  
GROUP**  
Commercial Real Estate Services