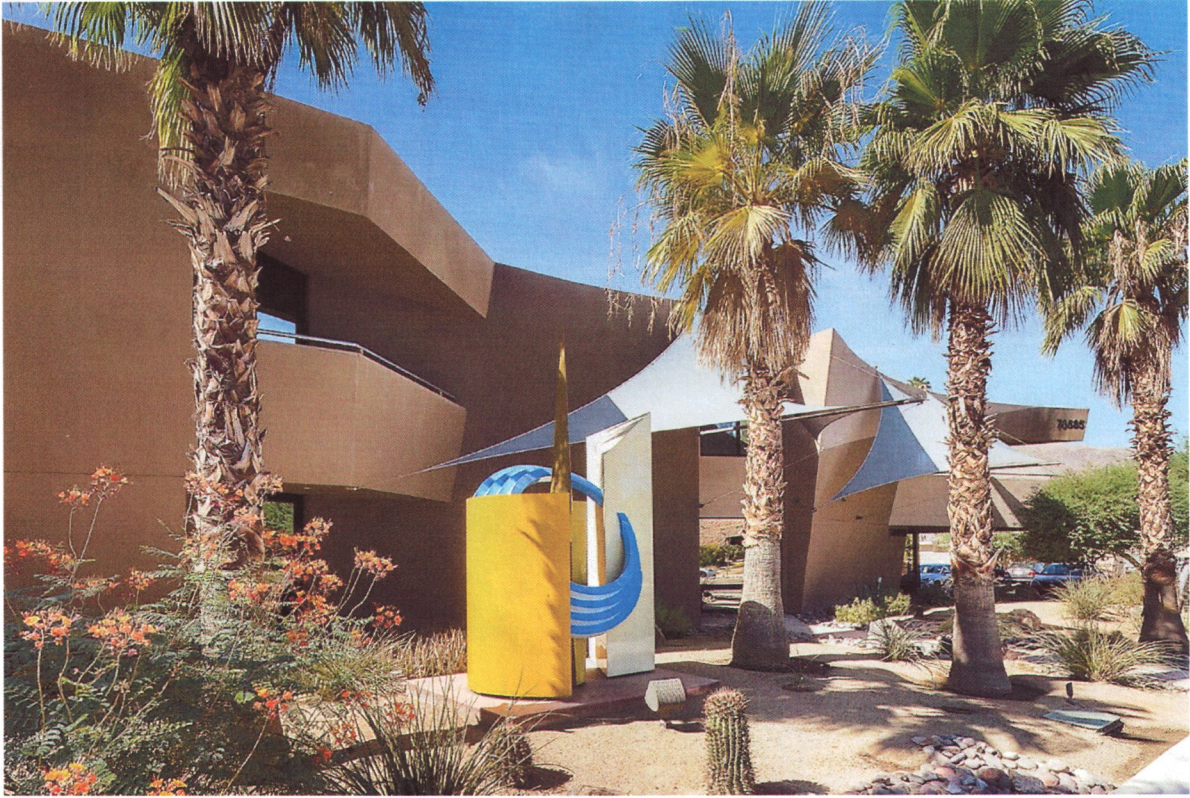


ORACLE PLAZA

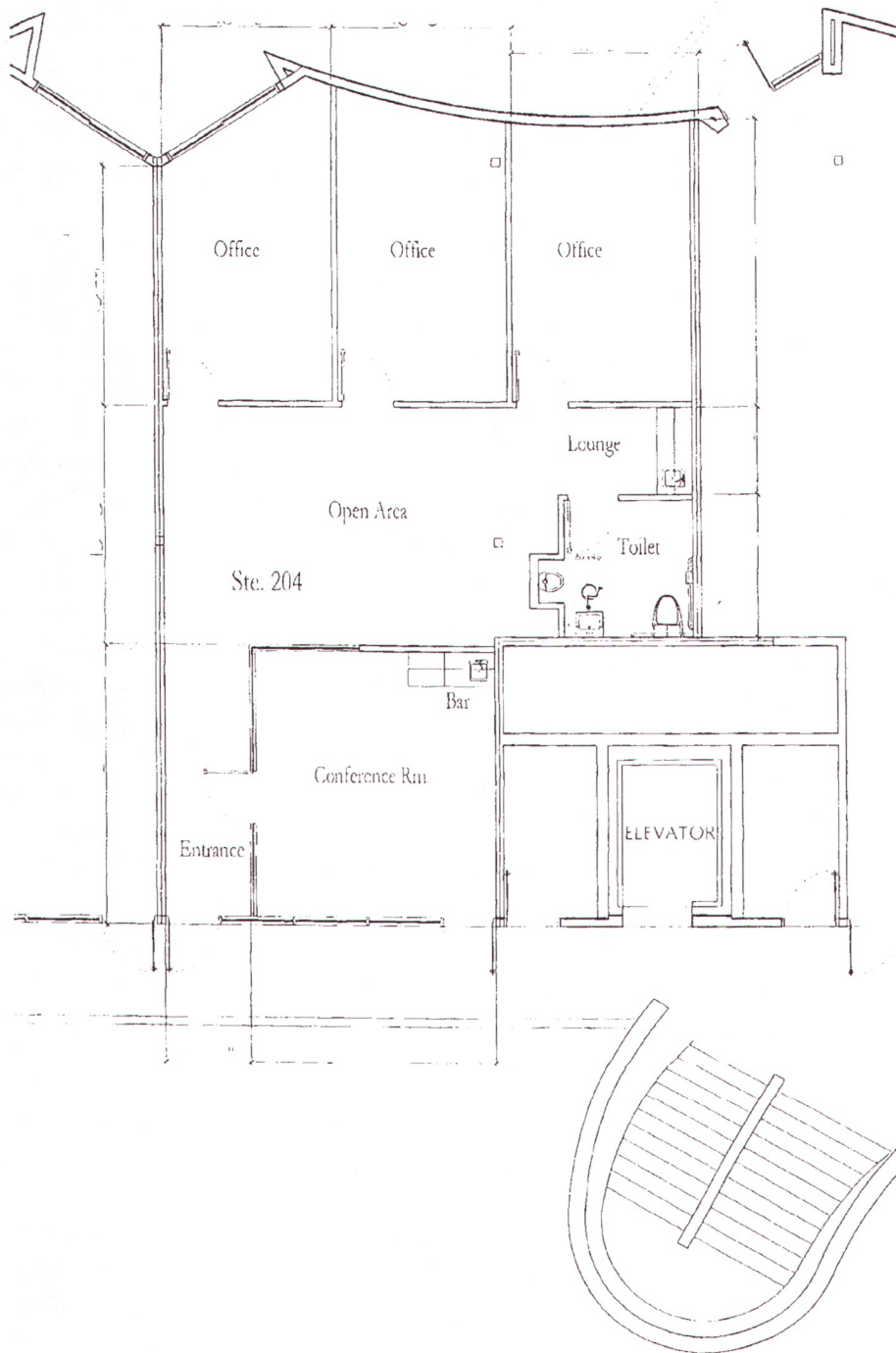






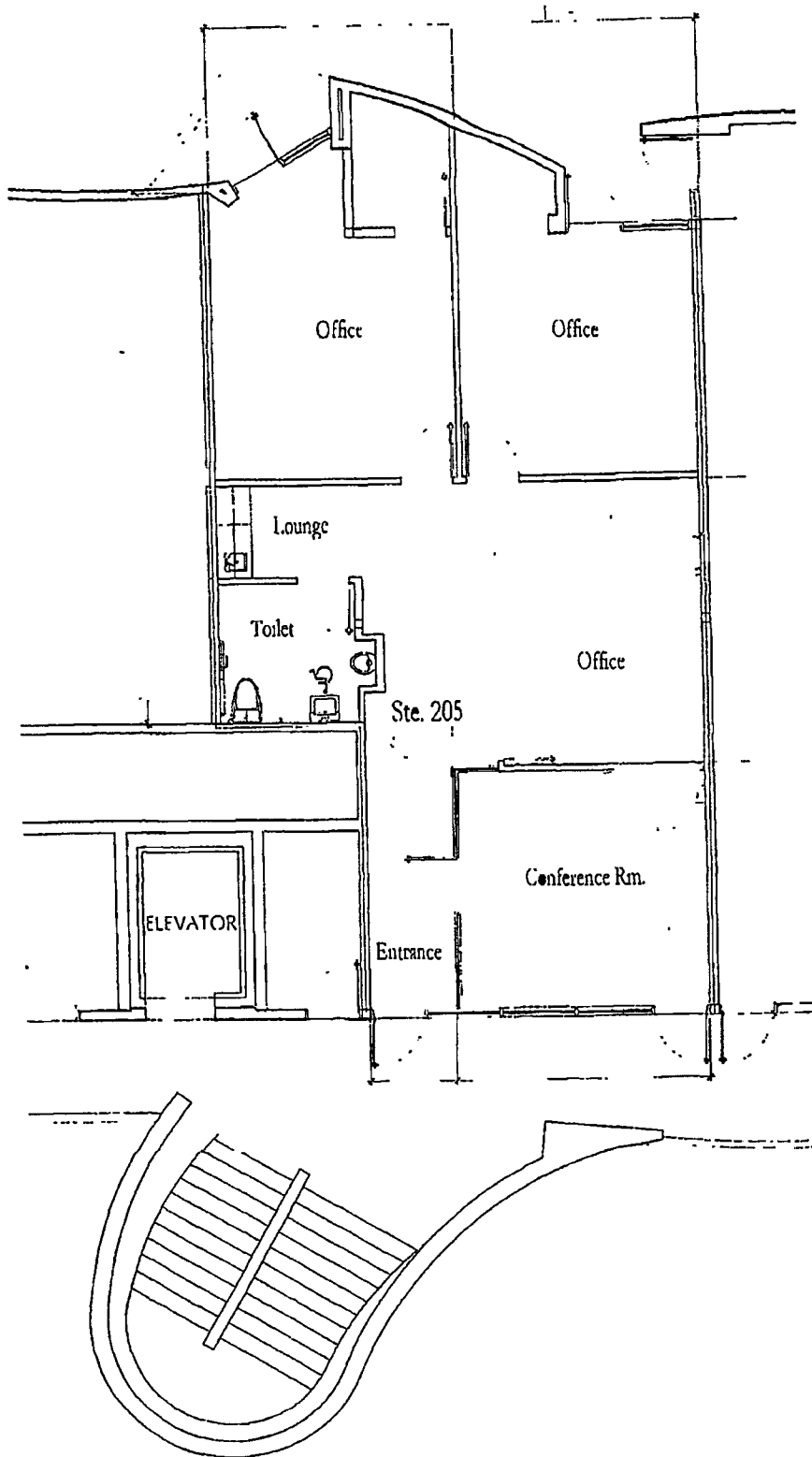
Class A, state-of-the art building designed by esteemed architect, Narendra Patel, the Oracle Plaza is located across the street from Palm Desert City Hall, several prominent attorneys and accountants, the SBA and Kaiser corporate offices.

The building tenants includes Palm Desert Dental (multiple locations across Southern California) and Dr. Krage, a respected chiropractor.



FLOOR PLAN - STE. 204

SCALE: 1/4" = 1'-0"



FLOOR PLAN - STE. 205

SCALE: 1/4" = 1'-0"