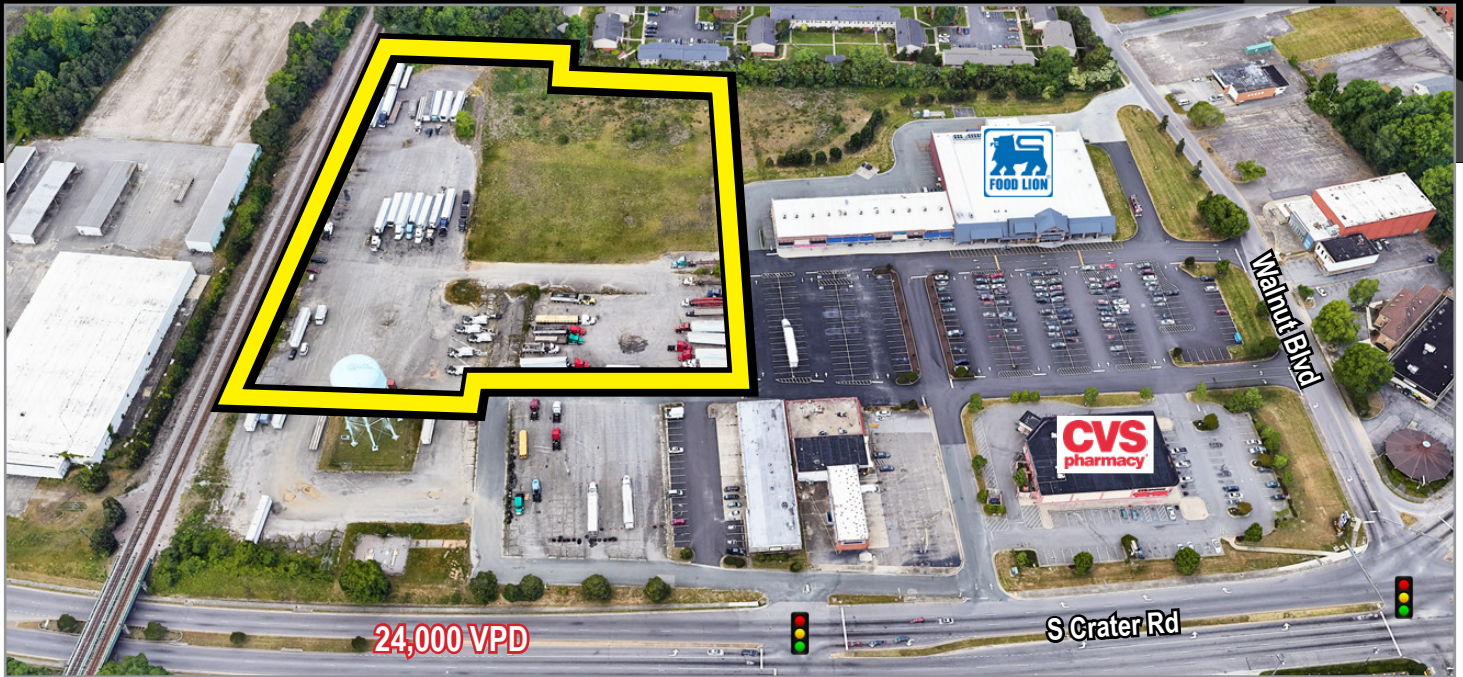


# 2200 SOUTH CRATER ROAD

Petersburg, Virginia 23805

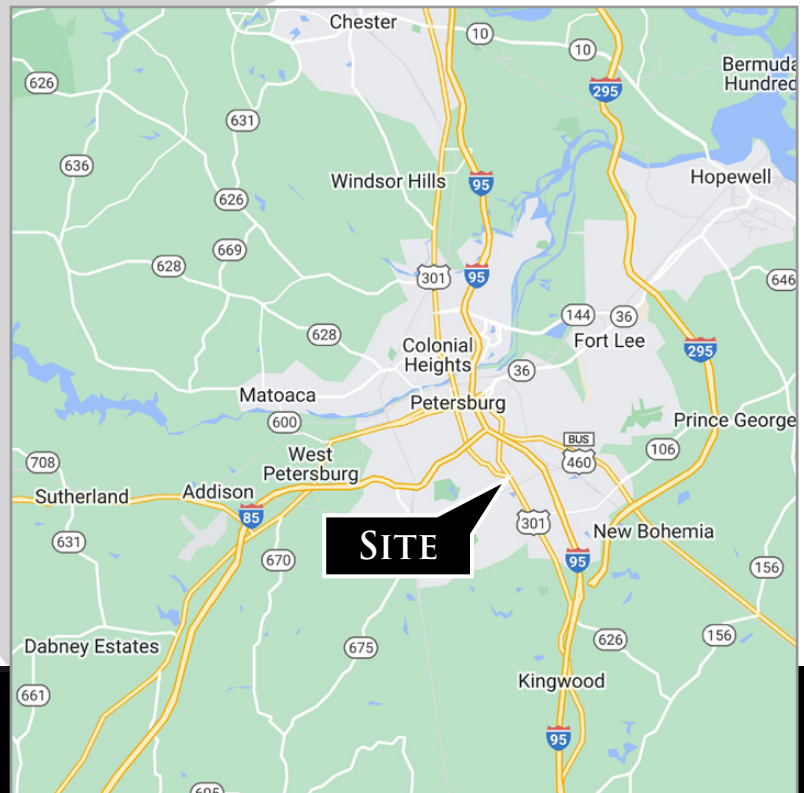
FOR SALE



## DEVELOPMENT OPPORTUNITY OFF S. CRATER ROAD

### PROPERTY HIGHLIGHTS:

- ▶ 6+/- acre parcel available
- ▶ Located adjacent to Walnut Hill Market, a 50K SF Food Lion anchored shopping center
- ▶ Zoned, B-1 General Business
- ▶ Traffic along S. Crater Road 24,000 vpd
- ▶ Strong retail market with numerous national users
- ▶ Retail, Office, Medical & Multifamily uses possible
- ▶ All Public Utilities Available
- ▶ Sale Price \$450,000



Nathan S. Jones, IV

nathan.jones@domcommercial.com

855.530.2300

[domcommercial.com](http://domcommercial.com)



# 2200 SOUTH CRATER ROAD

Petersburg, Virginia 23805

FOR SALE



Nathan S. Jones, IV

nathan.jones@domcommercial.com

855.530.2300

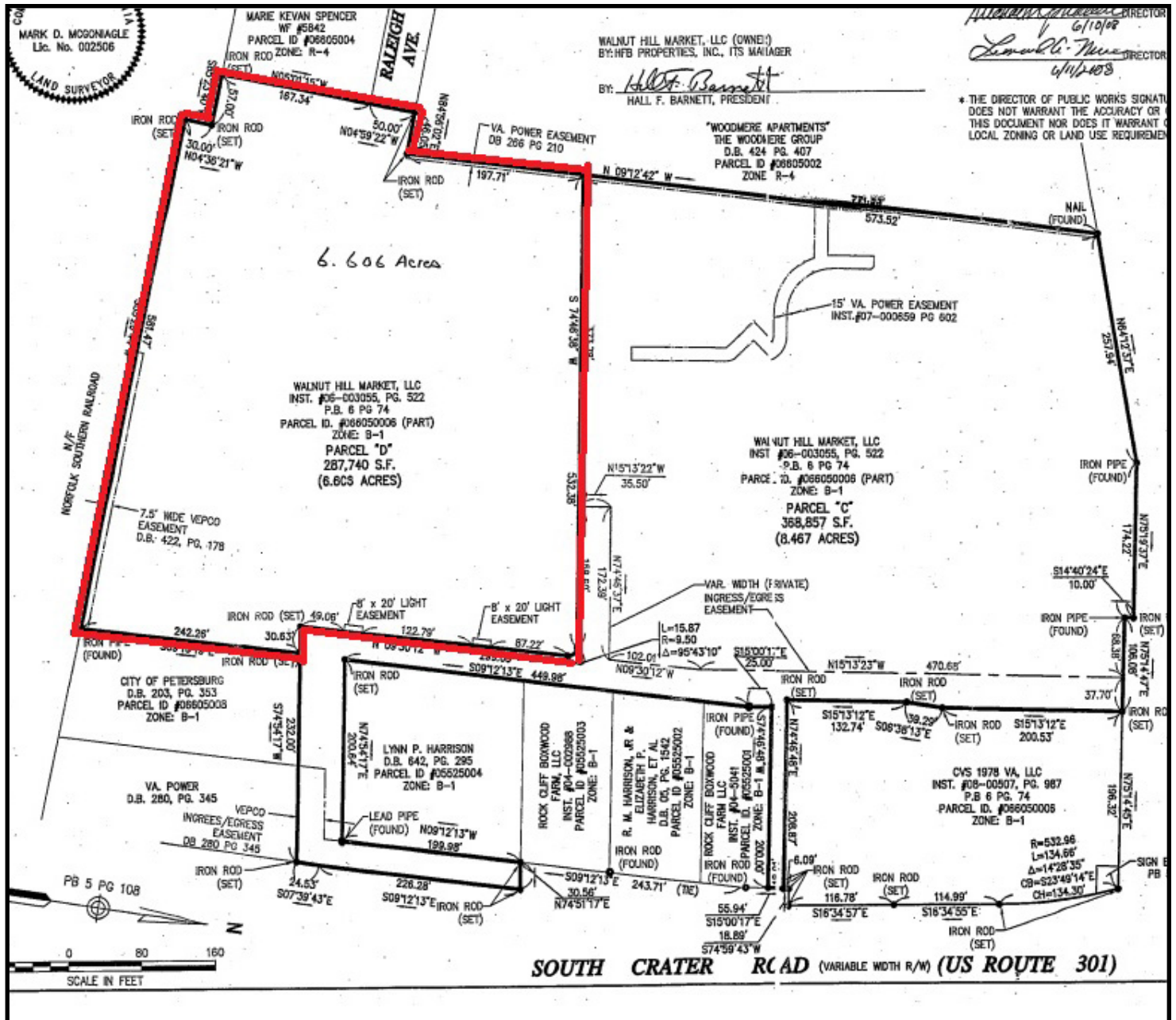
domcommercial.com



FOR SALE

Petersburg, Virginia 23805

# SITE SURVEY



**Nathan S. Jones, IV**

nathan.jones@domcommercial.com

855.530.2300

domcommercial.com